

**Monthly Report**  
to  
**The Public Utility Commission of Texas**

**ERCOT Wholesale Electricity Market**

Report Date: Thursday, July 22, 2010

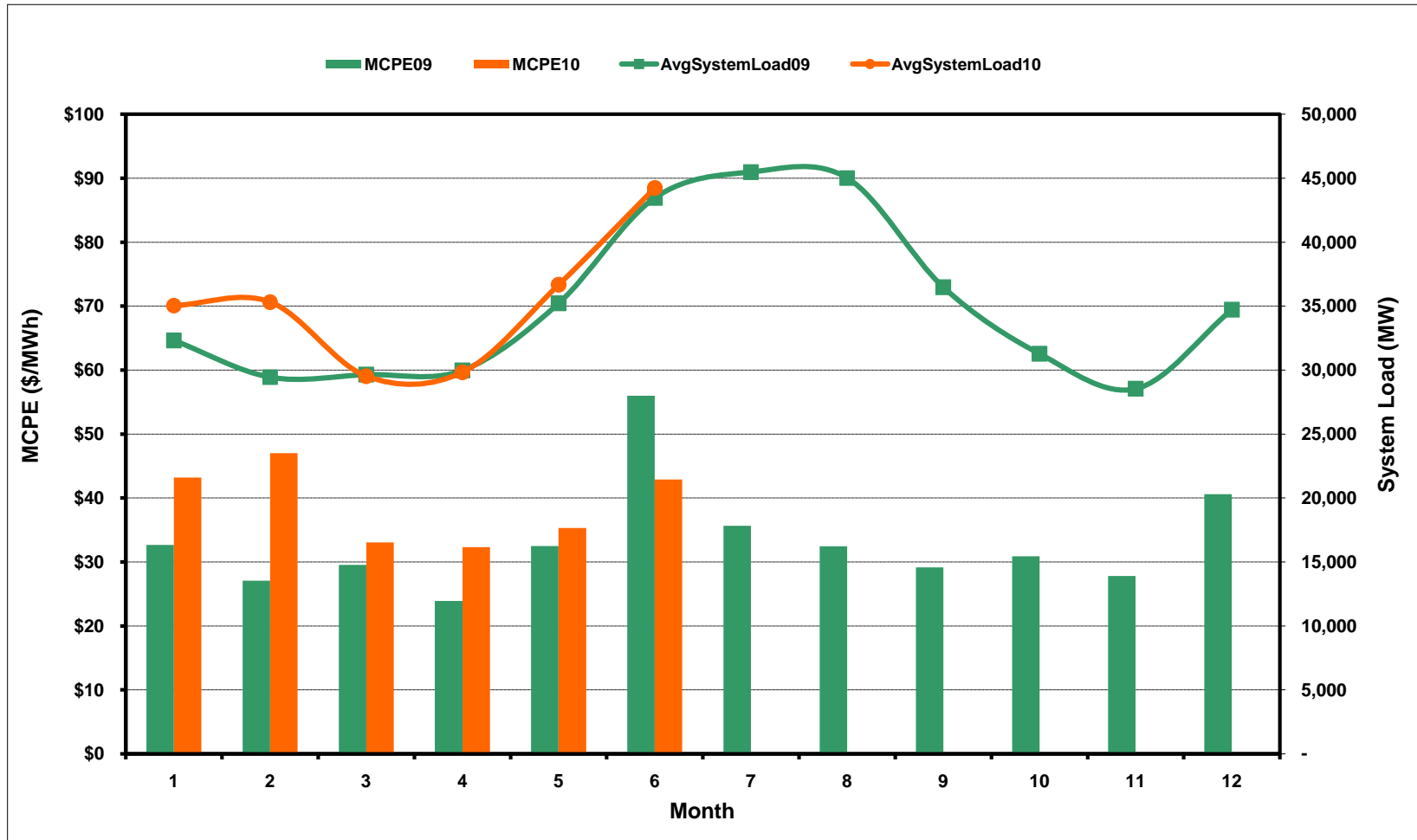
Report By: Potomac Economics, LTD  
Independent Market Monitor

Contents:

1	ERCOT-wide Balancing Energy Prices vs. Total Loads	<a href="#">chart</a>
2	Zonal Load Statistics	<a href="#">chart</a>
3	Zonal Balancing Energy Prices vs. Natural Gas Prices	<a href="#">chart</a>
4	ERCOT-wide Implied Heat Rates vs. Total Loads	<a href="#">chart</a>
5	Zonal Implied Heat Rates vs. Natural Gas Prices	<a href="#">chart</a>
6	Ancillary Services Required MW by Month	<a href="#">chart</a>
7	Ancillary Services Required MW by Hour Ending	<a href="#">chart</a>
8	Ancillary Services Prices by Month	<a href="#">chart</a>
9	A/S Costs per MWh of Load by Month	<a href="#">chart</a>
10	A/S Costs per MWh of Load by Hour Ending	<a href="#">chart</a>
11	ERCOT-wide Peaker Net Margin	<a href="#">chart</a>
12	Zonal Peaker Net Margin	<a href="#">chart</a>
13	DA Load Forecast Errors by Hour Ending	<a href="#">chart</a>
14	Average Shadow Prices by Constraint	<a href="#">chart</a>
15	Average TCR Auction Prices	<a href="#">chart</a>
16	Total OOME, LBE, OOMC, and RMR Costs	<a href="#">chart</a>
17	Total OOME, LBE, OOMC, and RMR Costs - Load Ratio	<a href="#">chart</a>
18	Average Wind Production by Hour Ending	<a href="#">chart</a>
19	West Zone Average MCPs	<a href="#">chart</a>

# ERCOT-Wide Monthly Average MCPE and Total System Load

(avg. MCPEs weighted by zonal SPD\_load)

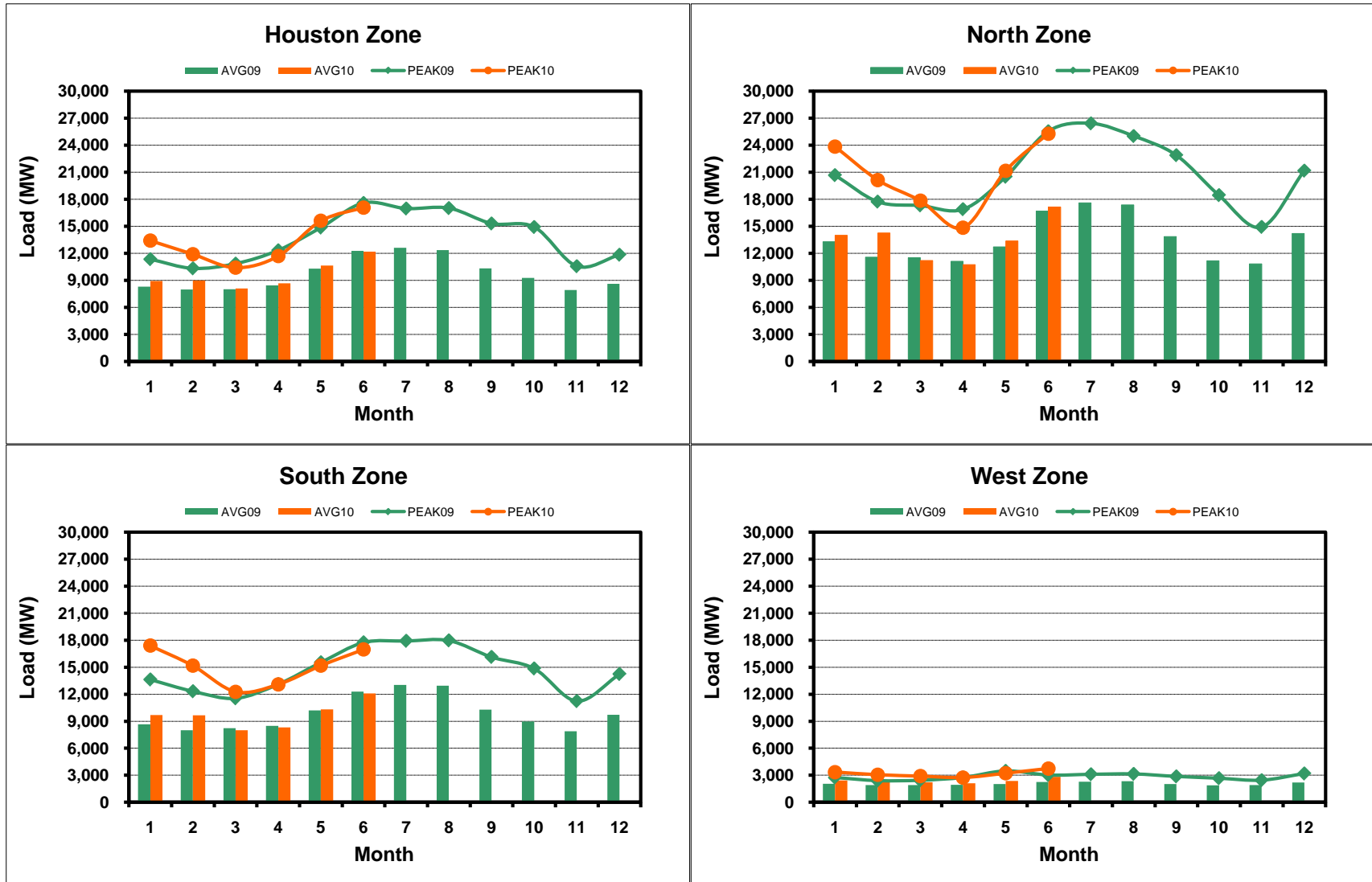


[Home <<](#)

[previous <<](#)

[next >>](#)

## Zonal Load Statistics



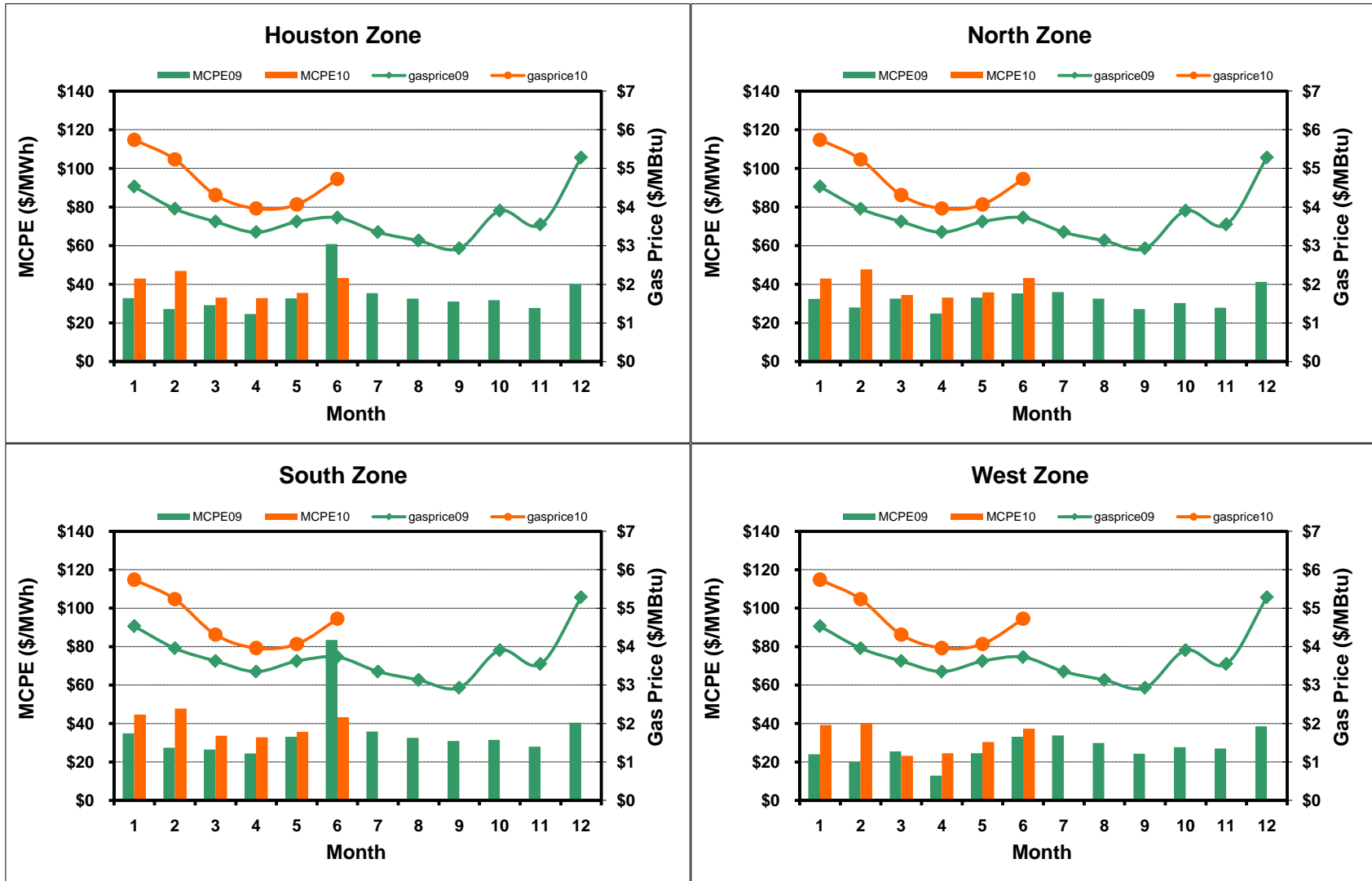
[Home <<](#)

[previous <<](#)

[next >>](#)

# Zonal Monthly Average MCPE and Natural Gas Price

(avg. MCPEs weighted by zonal SPD\_load)



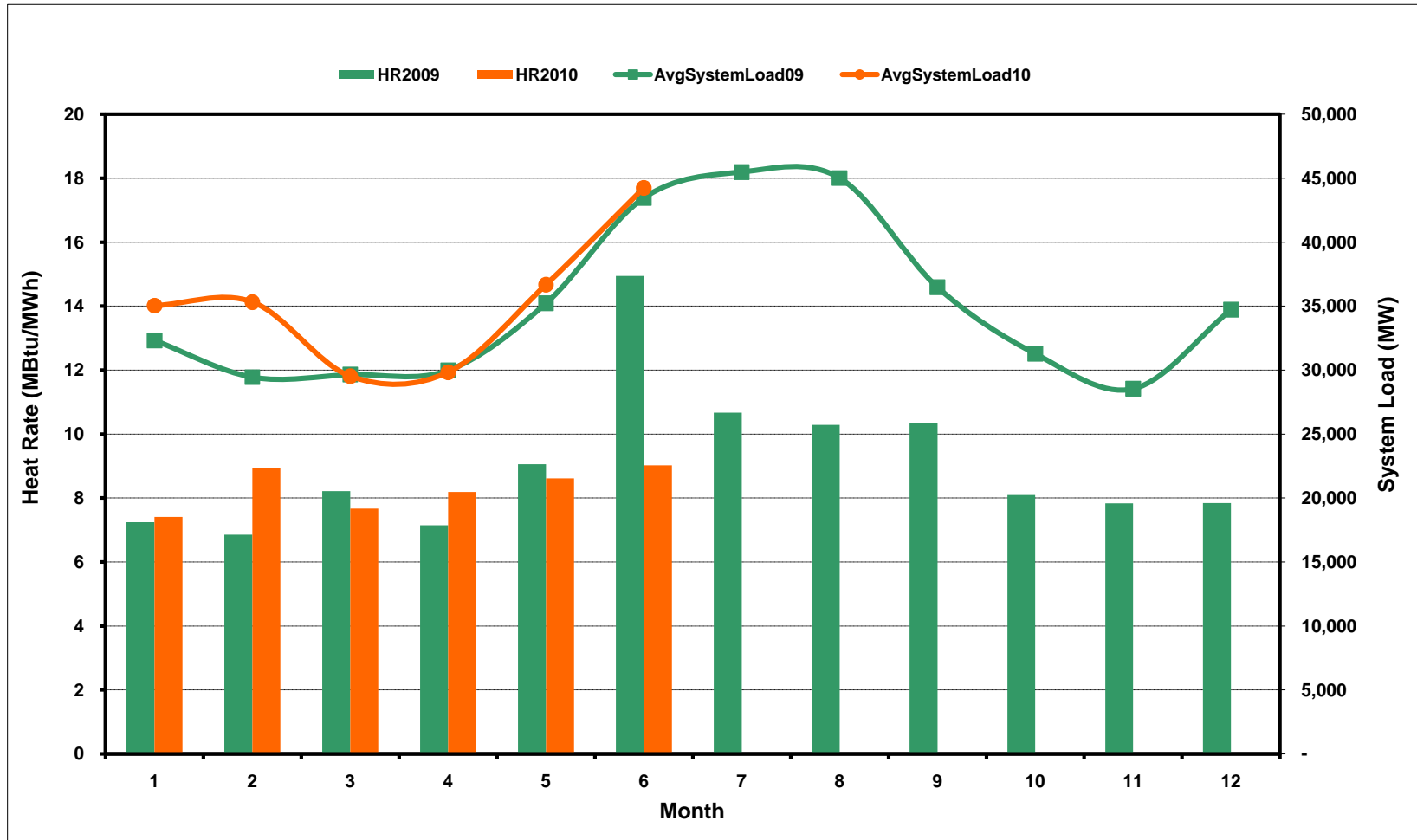
[Home <<](#)

[previous <<](#)

[next >>](#)

# ERCOT-Wide Monthly Average Heat Rate and Total System Load

(avg. heat rates weighted by zonal SPD\_load)



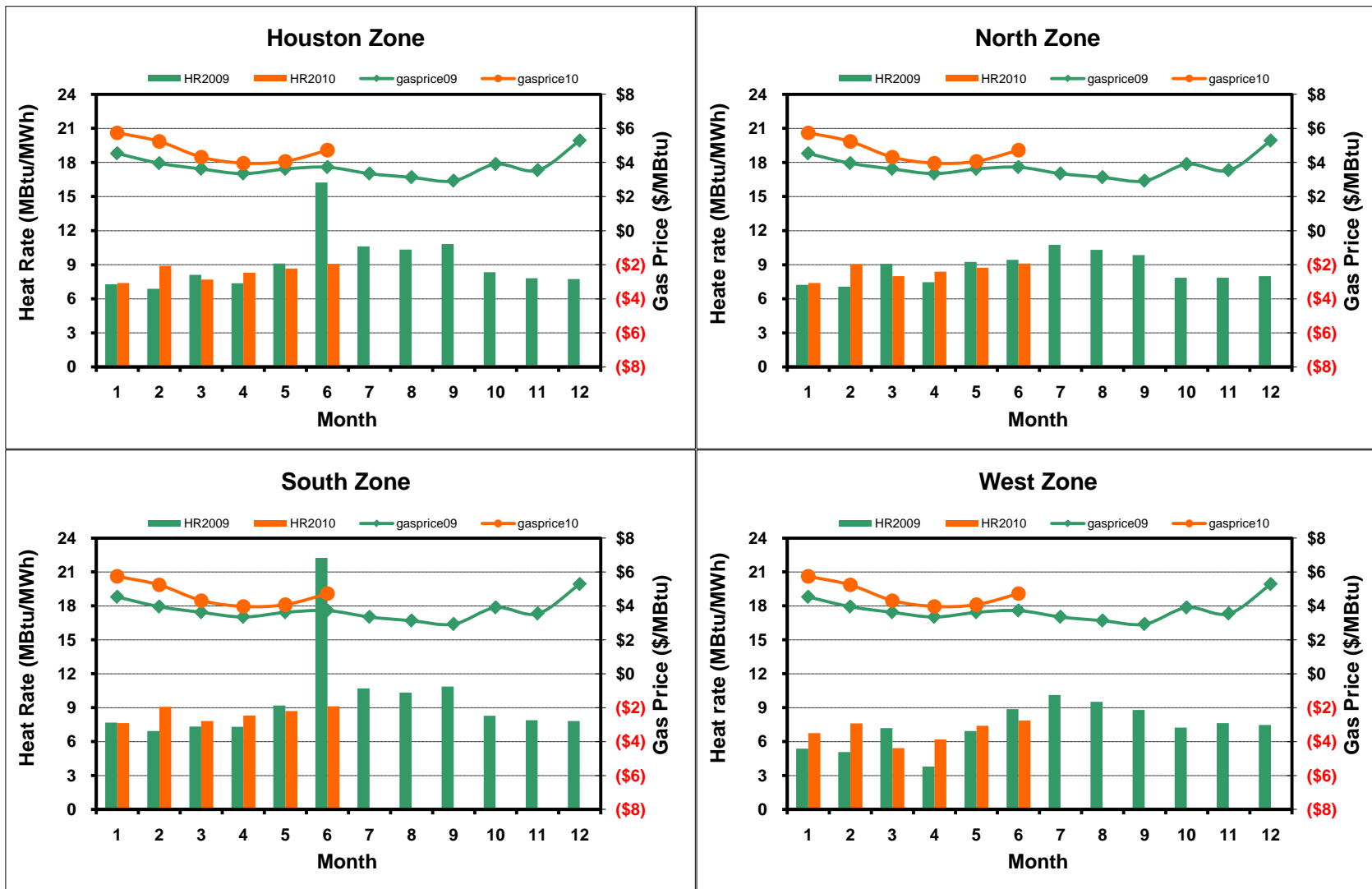
[Home <<](#)

[previous <<](#)

[next >>](#)

# Zonal Monthly Average Heat Rate and Natural Gas Price

(avg. heat rates weighted by zonal SPD\_load)

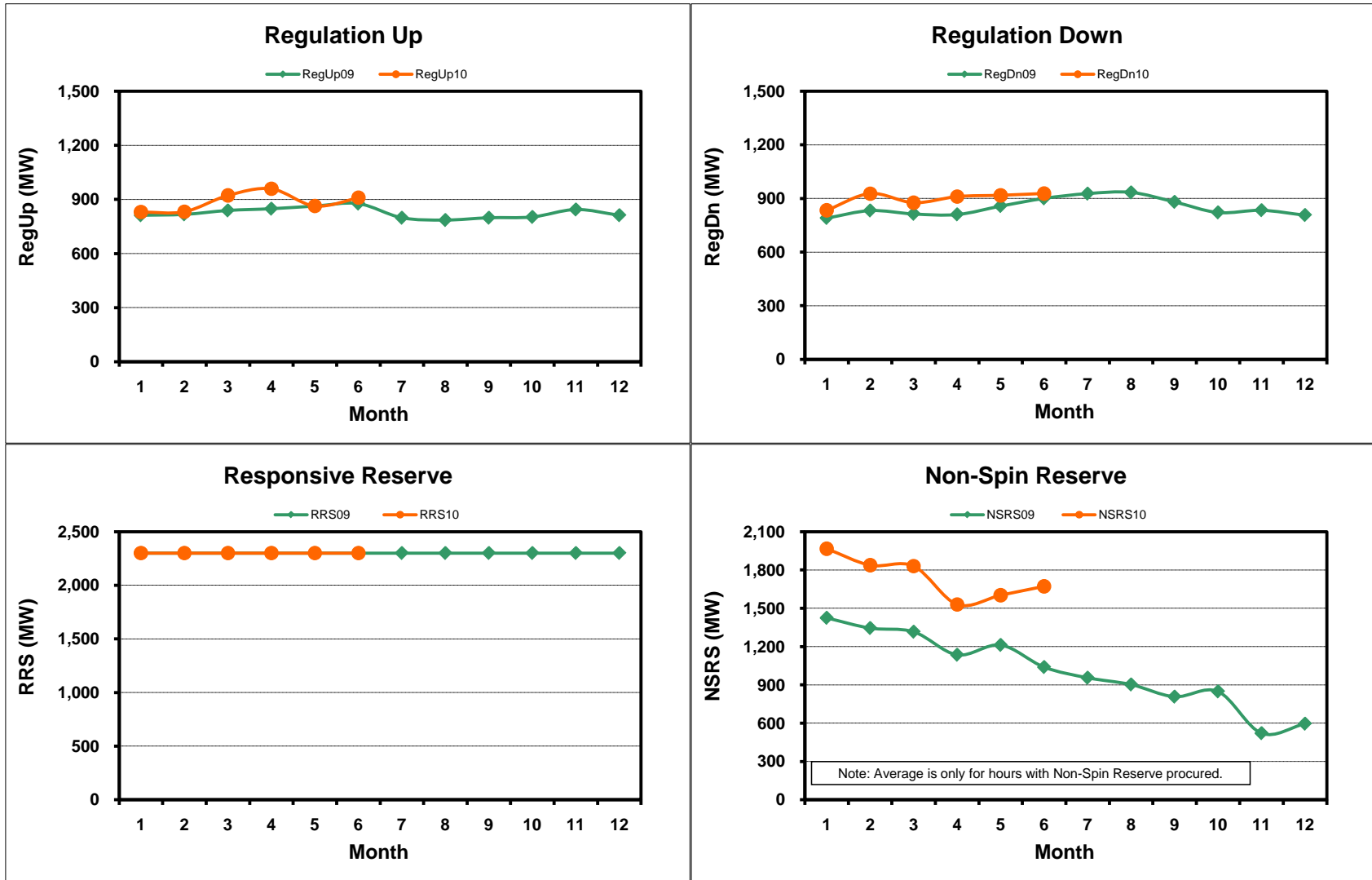


[Home <<](#)

[previous <<](#)

[next >>](#)

## Monthly Average of Ancillary Services Required MW

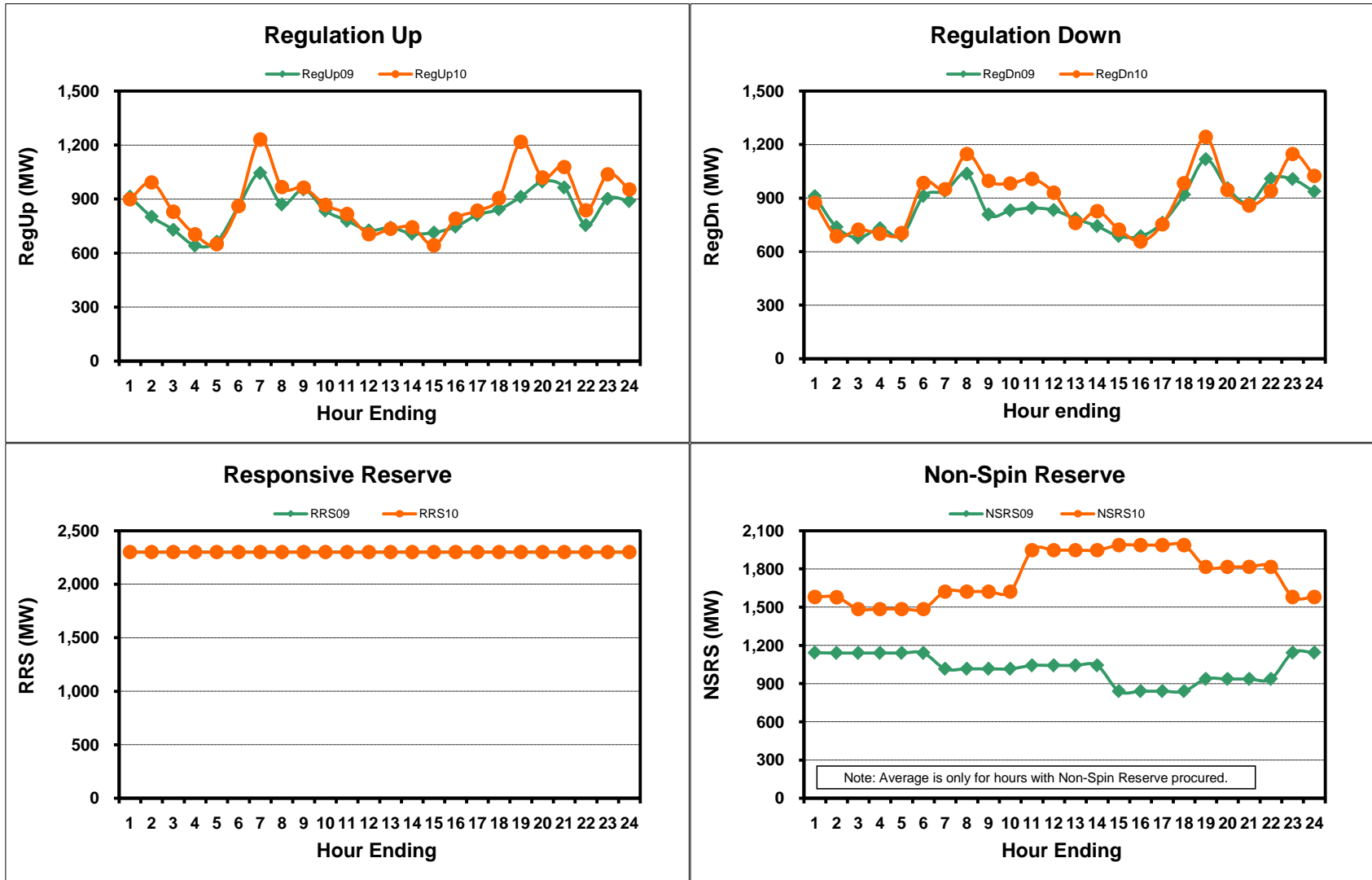


[Home <<](#)

[previous <<](#)

[next >>](#)

# Hourly Average of Ancillary Services Required MW



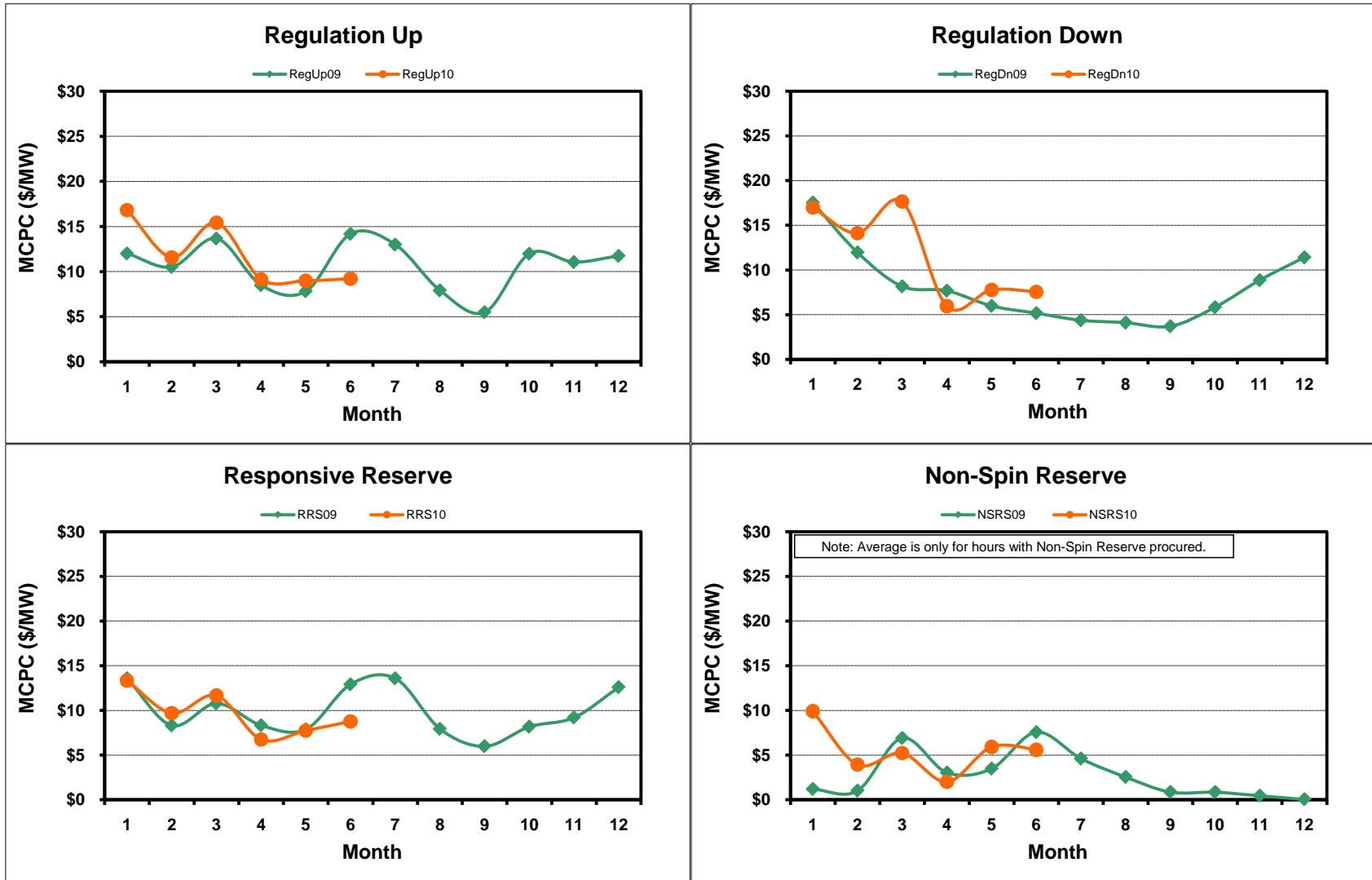
[Home <<](#)

[previous <<](#)

[next >>](#)

# Monthly Average Ancillary Services Price

(weighted by A/S Quantities Required)

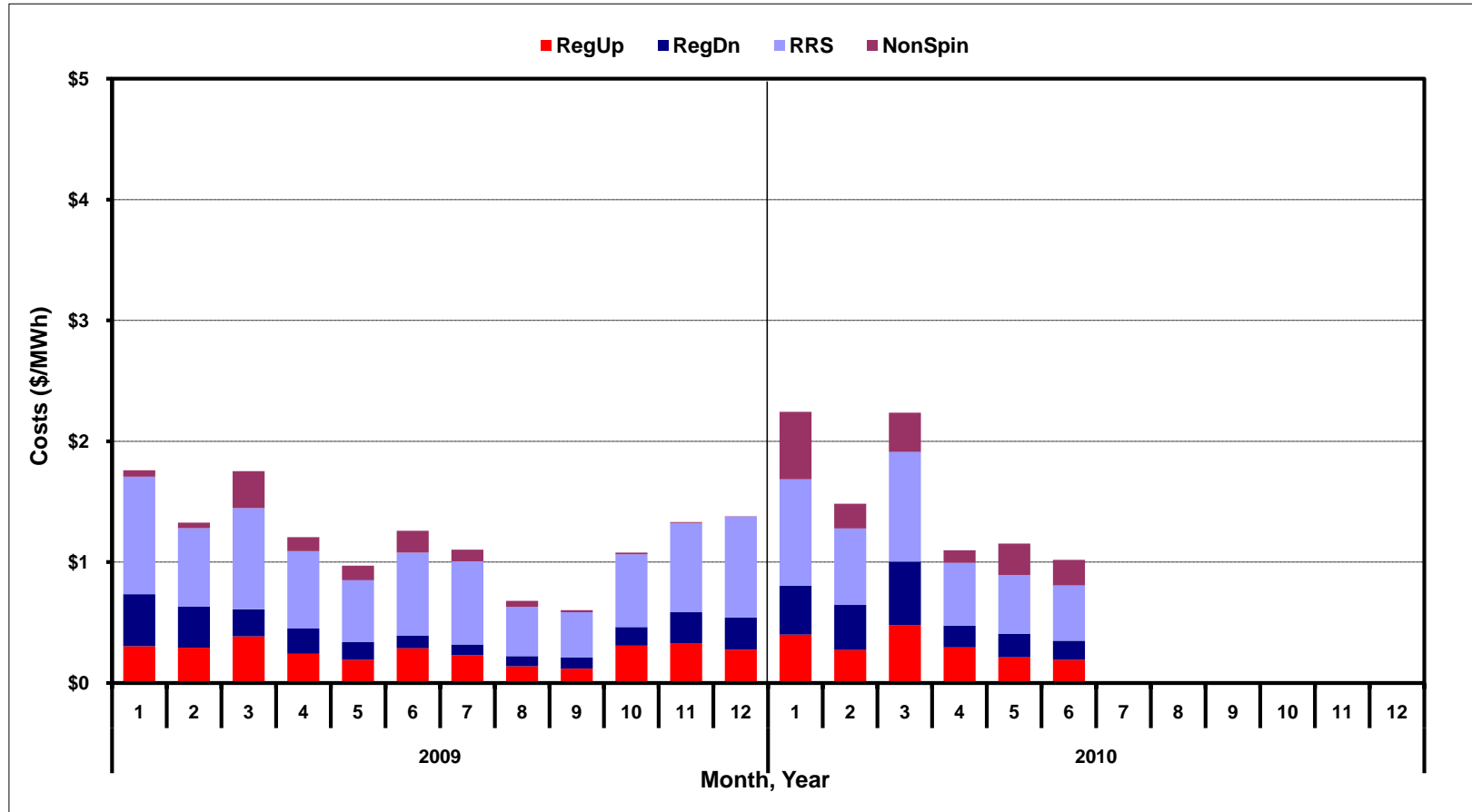


[Home <<](#)

[previous <<](#)

[next >>](#)

## Monthly Average A/S Cost per MWh Load

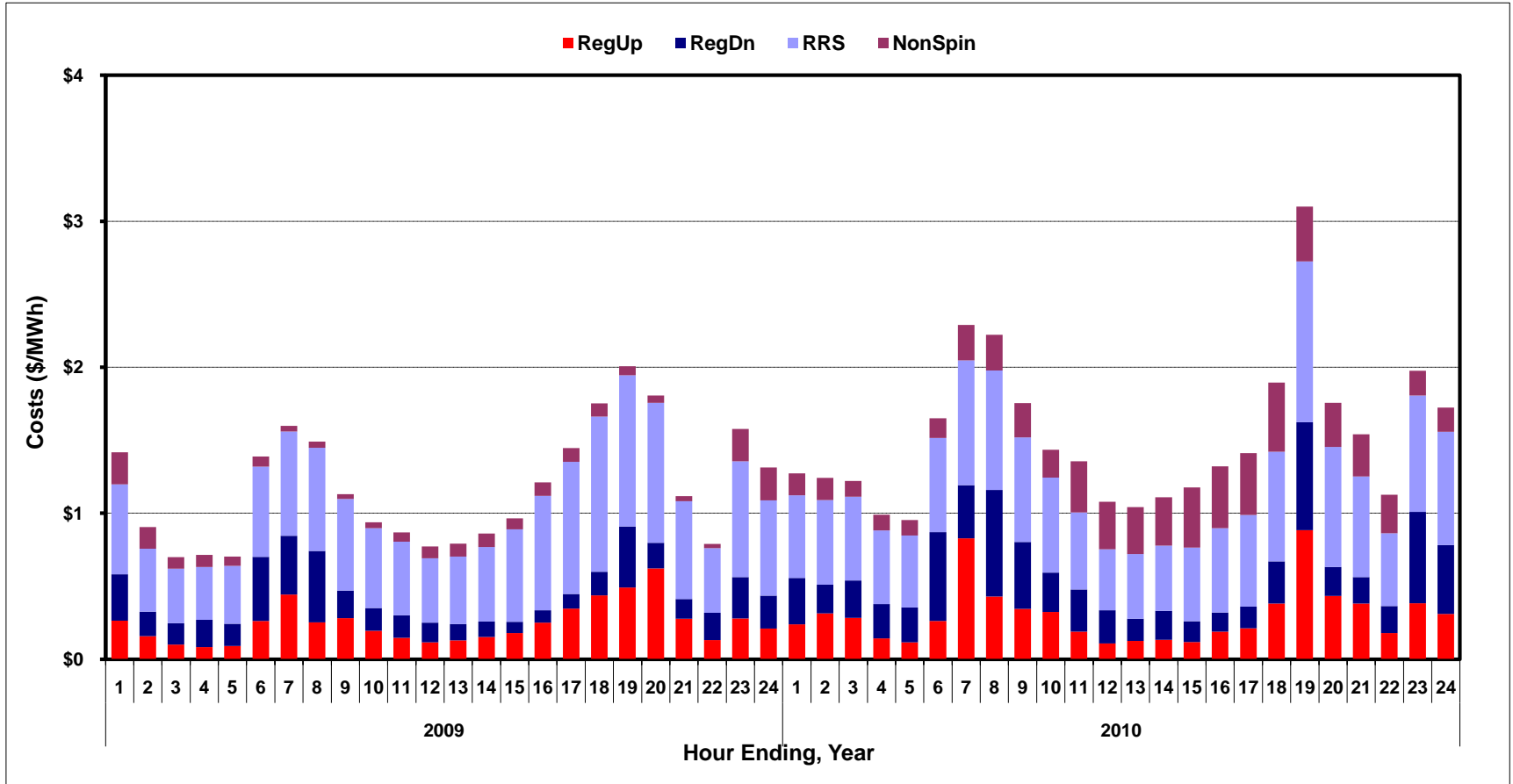


[Home <<](#)

[previous <<](#)

[next >>](#)

## Hourly Average A/S Cost per MWh Load

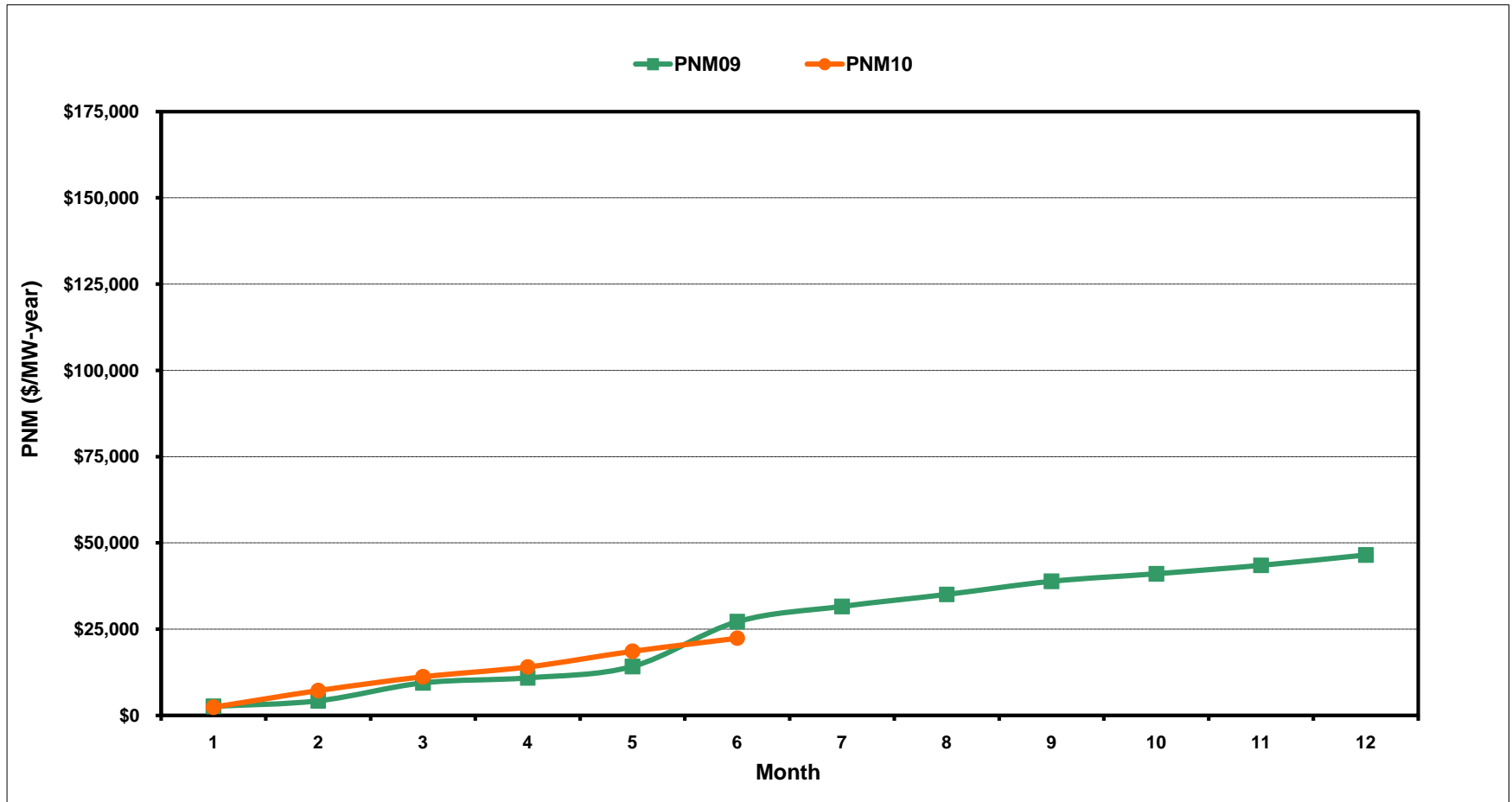


[Home <<](#)

[previous <<](#)

[next >>](#)

# ERCOT-Wide Cumulative Peaker Net Margin

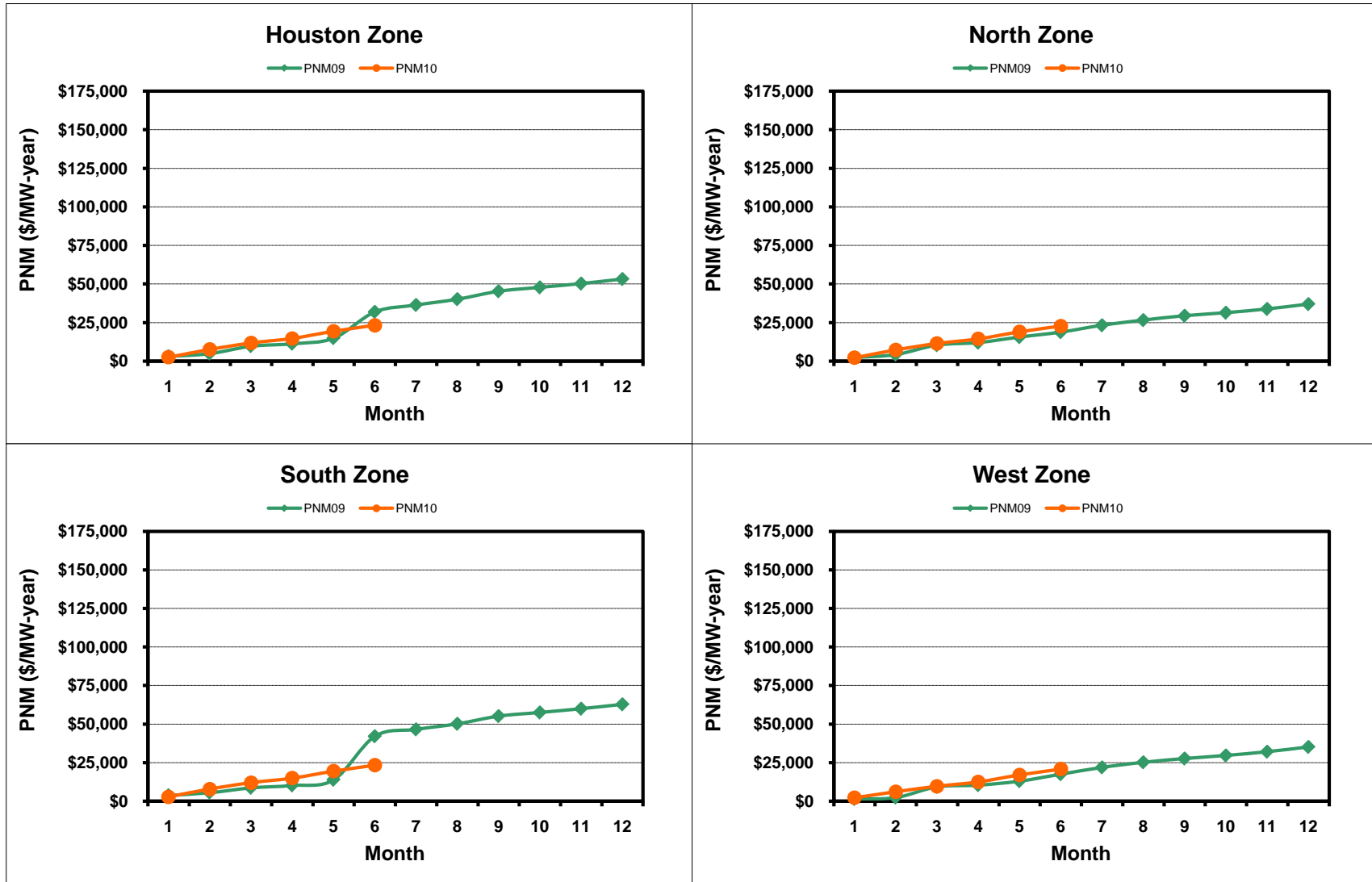


[Home <<](#)

[previous <<](#)

[next >>](#)

## Zonal Cumulative Peaker Net Margin

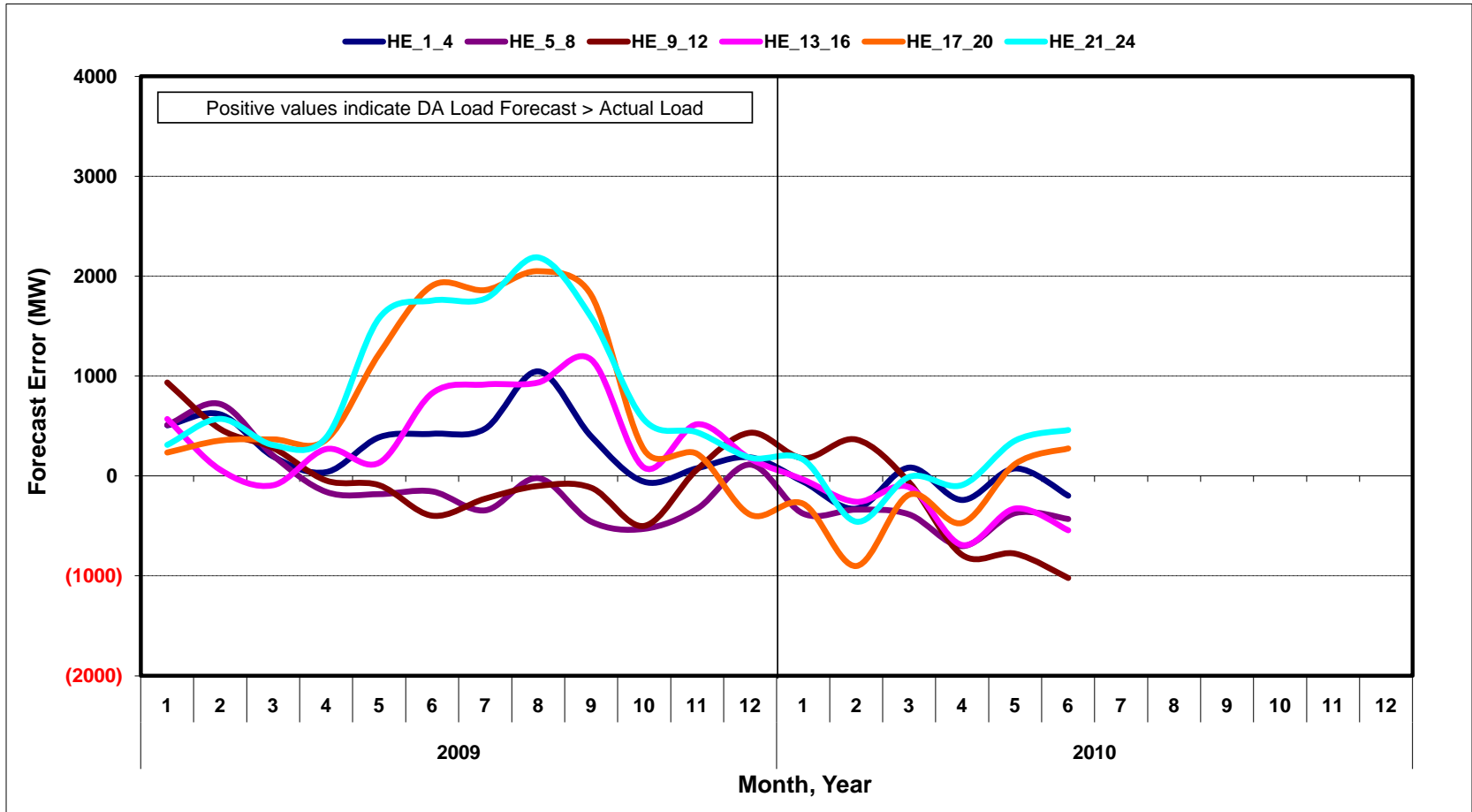


[Home <<](#)

[previous <<](#)

[next >>](#)

## DA vs. RT Load Forecast Error by Hour Ending

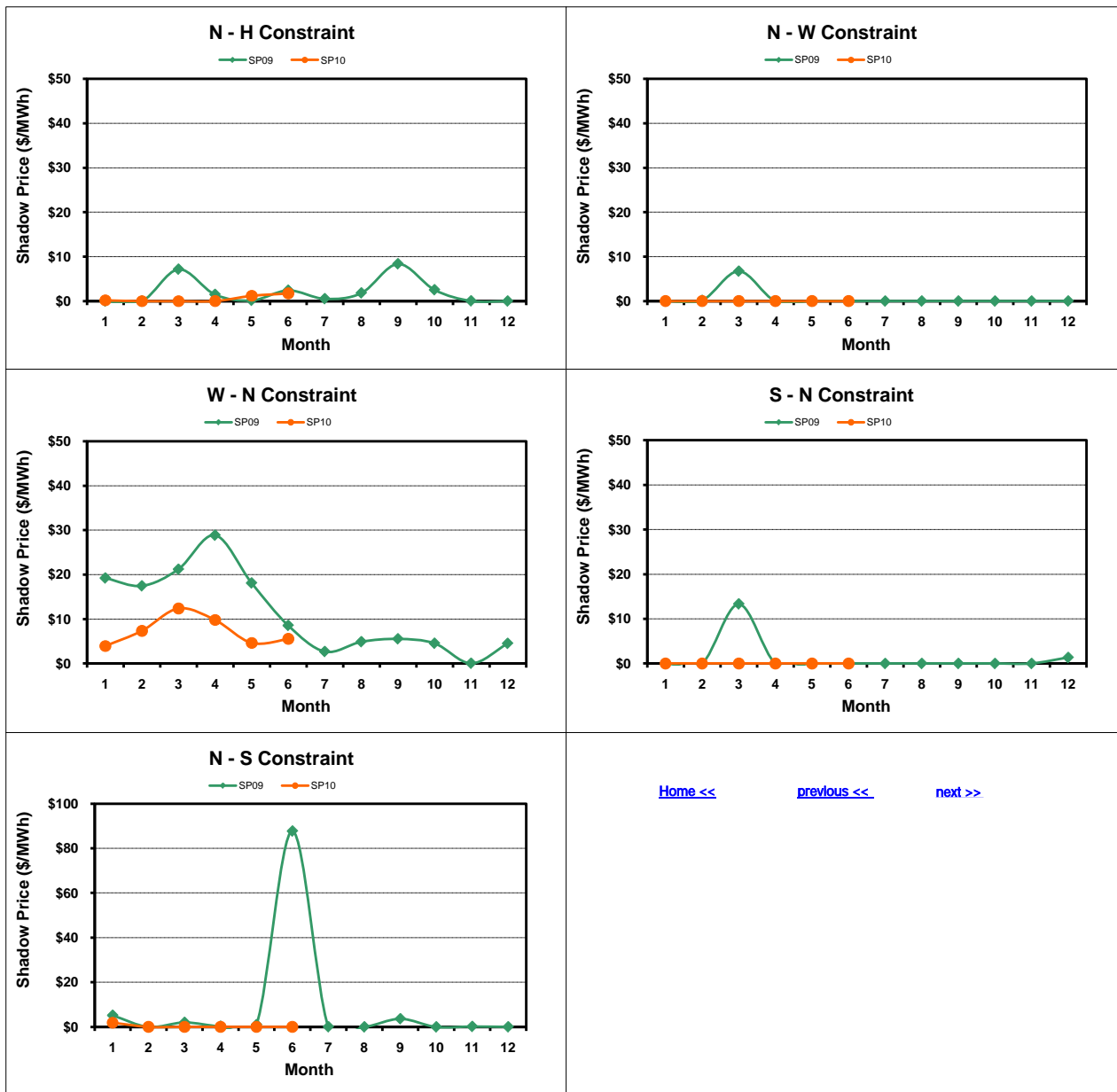


[Home <<](#)

[previous <<](#)

[next >>](#)

## Monthly Average Zonal Shadow Price

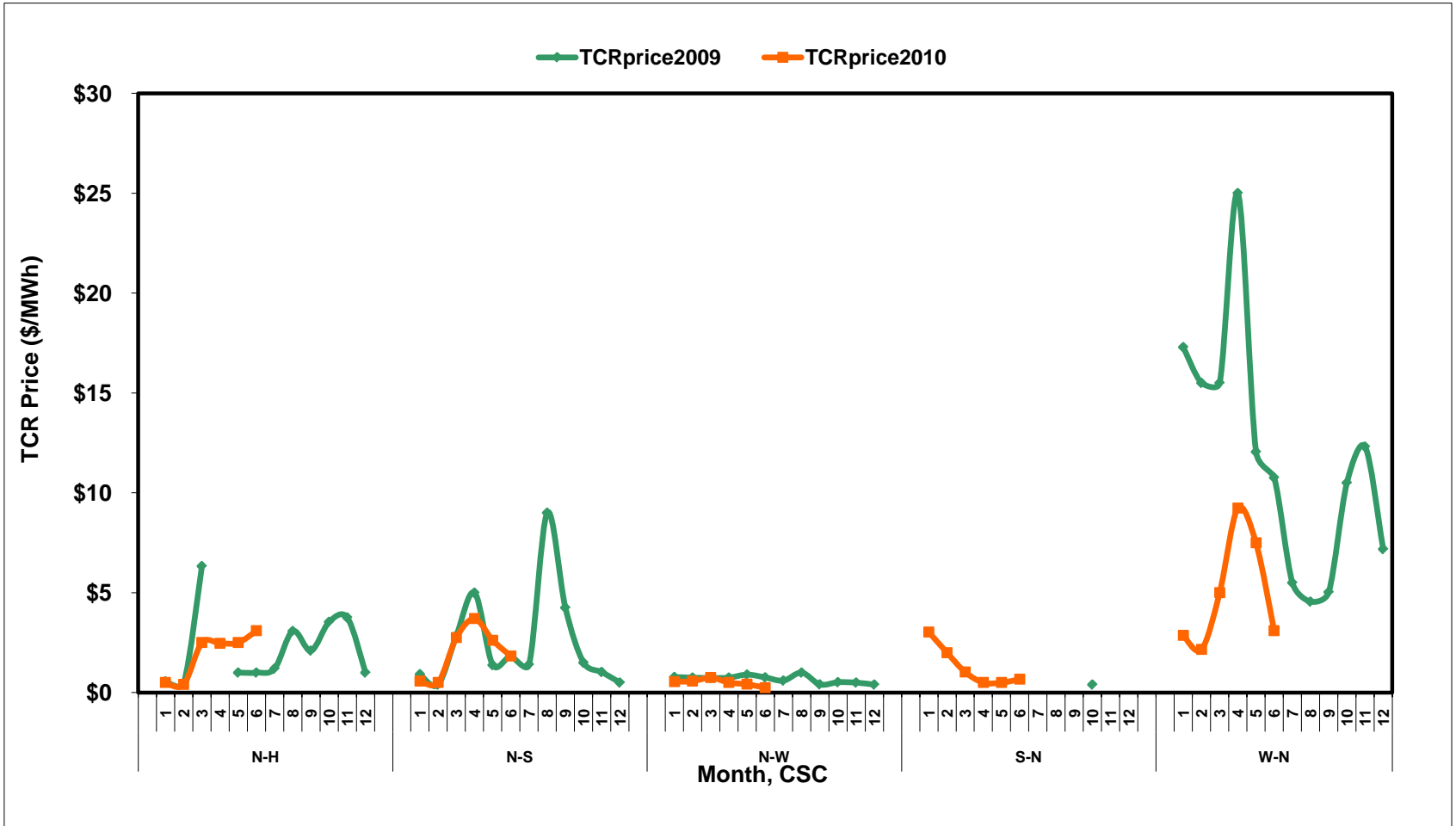


[Home <<](#)

[previous <<](#)

[next >>](#)

# Monthly TCR Auction Prices by CSC

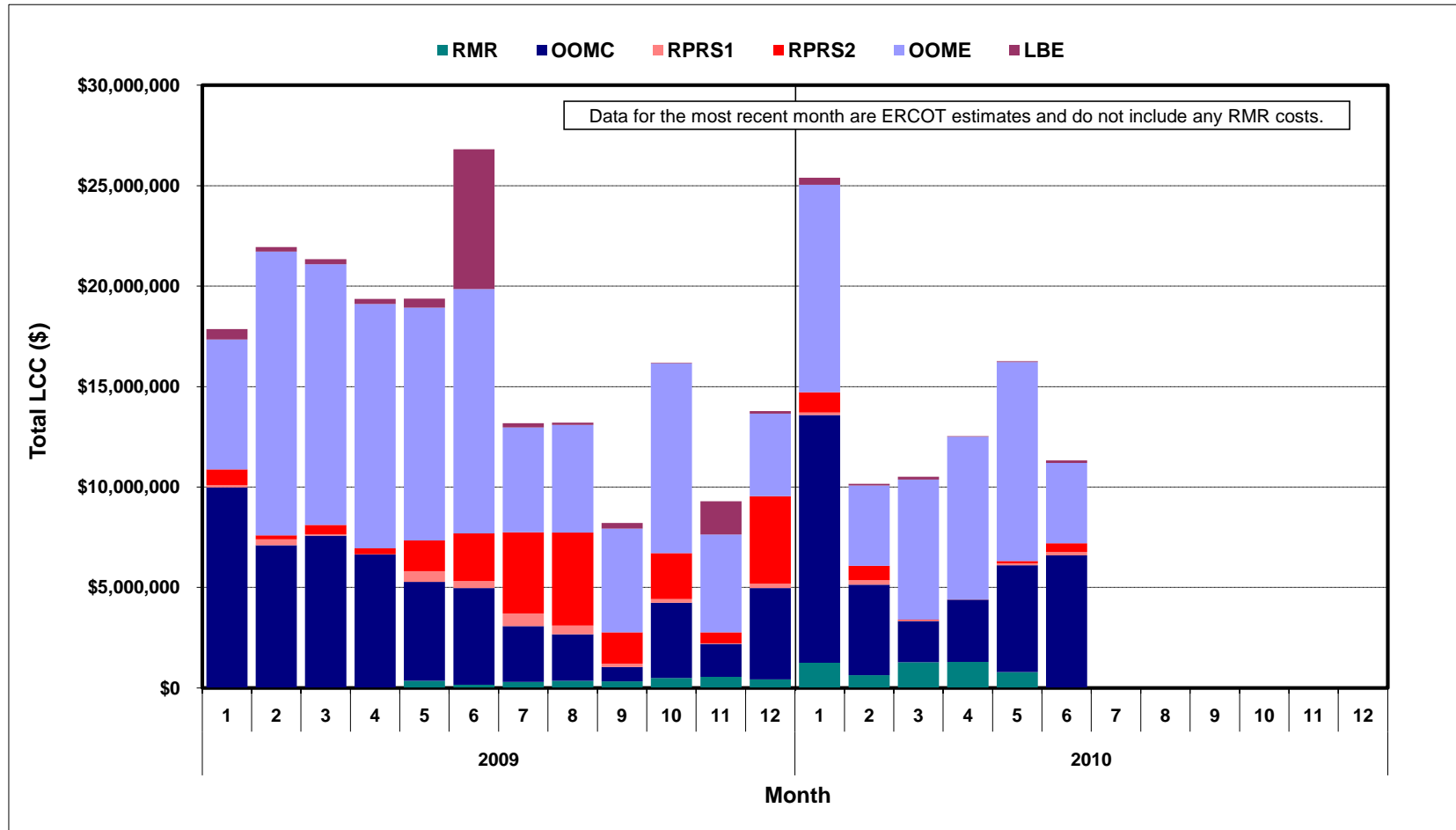


[Home <<](#)

[previous <<](#)

[next >>](#)

# Local Congestion Cost

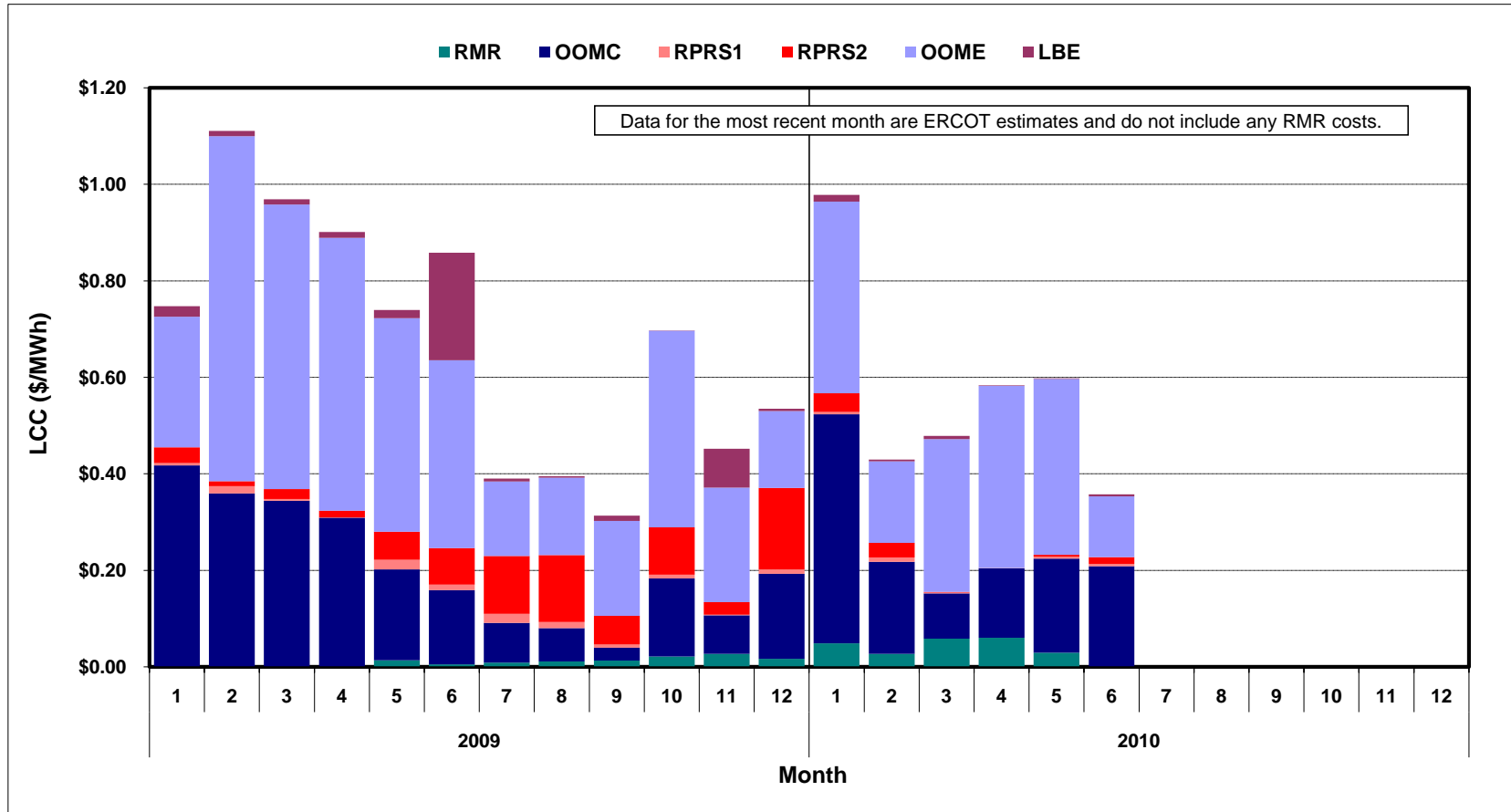


[Home <<](#)

[previous <<](#)

[next >>](#)

## Local Congestion Costs per MWh of Load

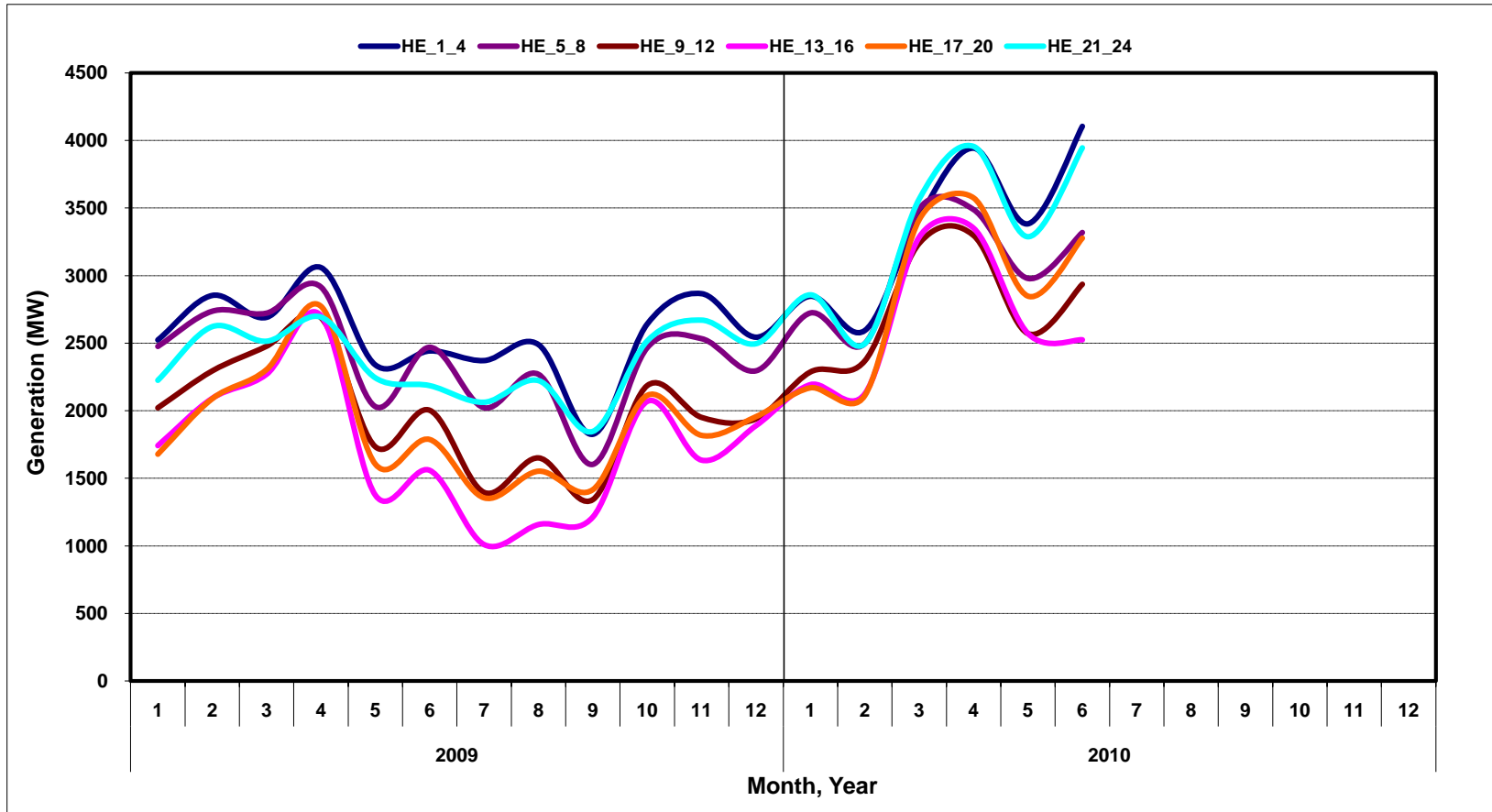


[Home <<](#)

[previous <<](#)

[next >>](#)

## Monthly Average of Wind Generation by Hour Ending

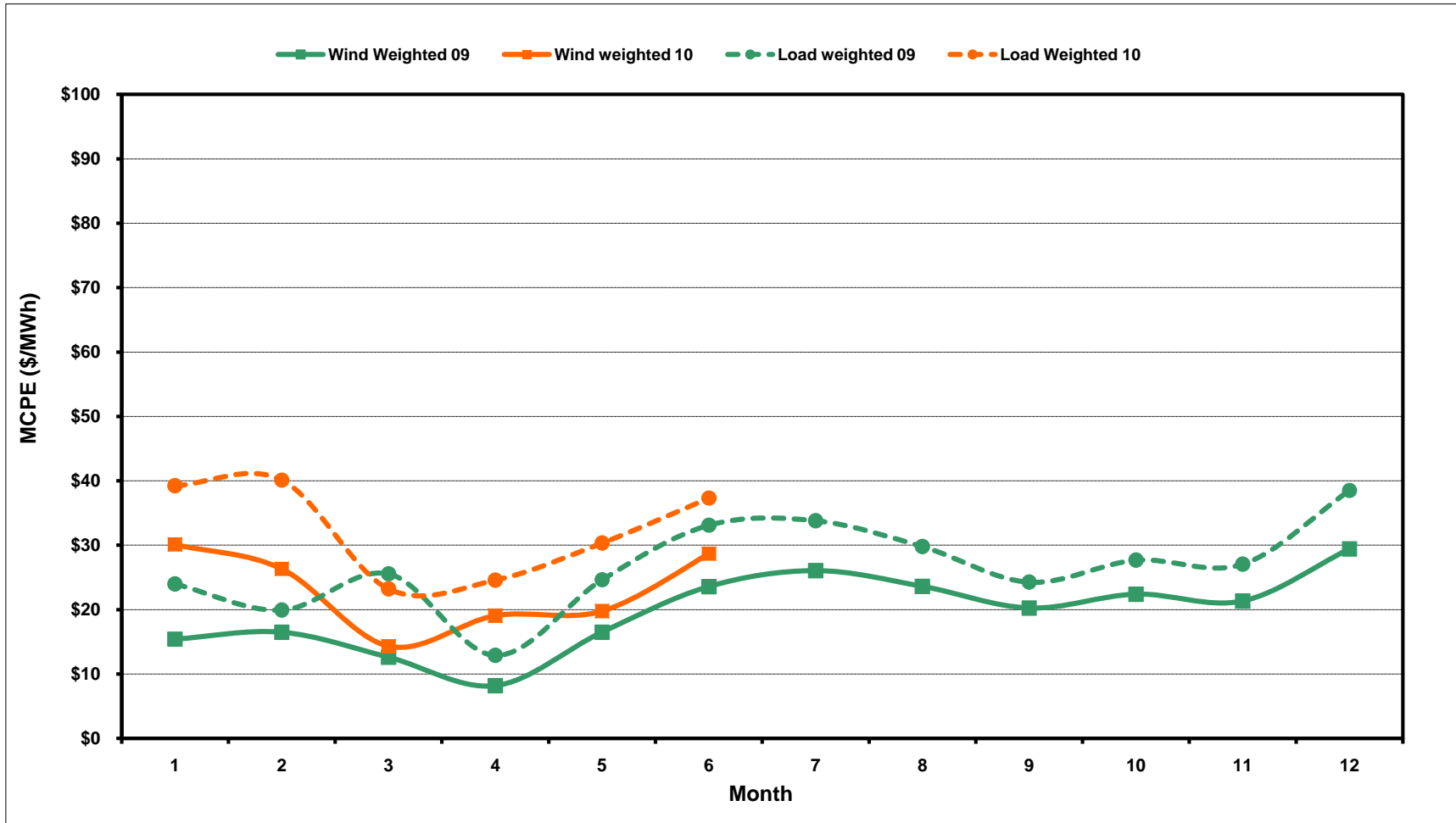


[Home <<](#)

[previous <<](#)

[next >>](#)

## West Zone MCPE Weighted by Wind Generation



[Home <<](#)

[previous <<](#)