
QUARTERLY INDEPENDENT MONITORING REPORT
ON
DUKE ENERGY CAROLINAS, LLC

Second Quarter 2015

Issued by:



Independent Market Monitor

July 30, 2015

CONFIDENTIAL MATERIAL REDACTED

Table of Contents

| | | |
|------|--|----|
| I. | Overview | 1 |
| A. | Independent Monitoring | 2 |
| B. | Summary of Quarterly Report | 3 |
| C. | Complaints and Special Investigations | 5 |
| II. | Wholesale Prices and Transactions | 6 |
| A. | Prices..... | 6 |
| B. | Sales and Purchases | 8 |
| III. | Transmission Congestion..... | 10 |
| A. | Overview..... | 10 |
| B. | Transmission Congestion..... | 11 |
| IV. | Transmission Access | 13 |
| V. | Monitoring for Anticompetitive Conduct | 28 |
| A. | Wholesale Sales and Purchases | 28 |
| B. | Generation Dispatch and Availability | 31 |
| C. | Analysis of Transmission Availability | 41 |

List of Figures

| | |
|---|----|
| Figure 1: Wholesale Power Prices, Peak Load, and Natural Gas Costs | 6 |
| Figure 2: Trends in Monthly Power and Natural Gas Prices | 8 |
| Figure 3: Summary of Duke Sales and Purchases | 9 |
| Figure 4: Disposition of Requests for Transmission Service on the Duke System | 13 |
| Figure 5: Disposition of Transmission by Duration of Service | 14 |
| Figure 6: Key Paths..... | 16 |
| Figure 7: TSR Refusals by Path..... | 17 |
| Figure 8: Key Flowgates Linked to Current TSR Refusals | 18 |
| Figure 9: Base AFC – Riverview to Peach Valley 230 kV (DUK) | 21 |
| Figure 10: Base AFC – Bob White to Pleasant Garden 230 kV (DUK)..... | 23 |
| Figure 11: Base AFC – Parkwood 500/230 kV (DUK)..... | 25 |
| Figure 12: Base AFC – Clover to Halifax 230kV (PJM) | 27 |
| Figure 13: Prices for Duke Sales and Purchases..... | 30 |
| Figure 14: Duke and Progress Energy Supply Curve | 32 |
| Figure 15: Out-of-Merit Dispatch and Congestion Events | 35 |
| Figure 16: Output Gap | 37 |
| Figure 17: Outage Quantities | 38 |
| Figure 18: Outage Rate | 40 |
| Figure 19: Correlation of Average Outage Rates with Wholesale Energy Prices | 40 |

I. Overview

This transmission monitoring report evaluates the period from April through June 2015 for Duke Energy Carolinas, LLC (formerly Duke Power, a division of Duke Energy Corporation) (“Duke” or “the Company”). For the purpose of increasing confidence in the independence and transparency of the operation of the Duke transmission system, Duke proposed, and FERC accepted in Docket No. ER05-1236-00, the establishment of an “Independent Entity” to perform certain functions relating to the Open Access Transmission Tariff (“OATT”). The transmission monitoring plan also calls for an “independent transmission service monitor”. The MISO was retained as the Independent Entity (“IE”), and Potomac Economics was retained as the independent transmission service monitor.

The scope of the independent transmission service monitor is established in the transmission monitoring plan. The plan is designed to detect any anticompetitive conduct from operation of the company’s transmission system, including any transmission effects from the company’s generation dispatch. It is also intended to identify any rules affecting Duke’s transmission system that result in a significant increase in wholesale electricity prices or the foreclosure of competition by rival suppliers. As stated in the plan:

The Monitor shall provide independent and impartial monitoring and reporting on: (1) generation dispatch of Duke Power and scheduled loadings on constrained transmission facilities; (2) details on binding transmission constraints, transmission refusals, or other relevant information; (3) operating guides and other procedures designed to relieve transmission constraints and the effectiveness of these guides or procedures in relieving constraints; (4) information concerning the volume of transactions and prices charged by Duke Power in the electricity markets affected by Duke Power before and after Duke Power implements redispatch or other congestion management actions; (5) information concerning Duke Power’s calling for transmission line loading relief (“TLR”); and (6) the information provided by Duke Power used to perform the calculation of Available Transmission Capability (“ATC”) and Total Transfer Capability (“TTC”).

To execute the monitoring plan, Potomac Economics routinely receives data from Duke that allows it to monitor generation dispatch, transmission system congestion and the Company’s response to transmission congestion, including its business activities. Potomac Economics also collects data from other sources, including OASIS data and market pricing data.

Duke Monitoring Report: Second Quarter 2015

The purpose of this report is to present the results of our monitoring activities and significant events on the Duke system from April to June 2015.¹

A. Independent Monitoring

Potomac Economics performs the monitoring function on a regular basis, and conducts periodic reviews and special investigations. Our primary monitoring is conducted through regular analysis of market data relating to transmission outages, congestion and system access. This involves data on transmission outages, transmission reservation requests, ATC, Available Flowgate Capability (“AFC”), TLR and curtailments or other actions taken by Duke to manage congestion. Analyses of this data aid in detecting congestion and whether market participants have full access to transmission service.

In addition to the regular monitoring of transmission outages and reservations, we also remain alert to other significant events, such as price spikes, major generation outages, and extreme weather that could adversely affect transmission system capability and give rise to the opportunity for anticompetitive conduct.

Our periodic review of market conditions and operations is based on data provided by Duke as well as other data that we routinely collect. Our review consists of four parts. First, we evaluate regional prices and transactions to provide an assessment of overall market conditions. Second, we summarize transmission congestion and the use of schedule curtailments in order to detect potential competitive problems (congestion is identified by schedule curtailments² on Duke’s transmission system). Third, we evaluate the disposition of transmission service requests and flowgates to analyze transmission access and to detect events on the Duke system that require closer analysis. Finally, to monitor for anticompetitive conduct, we examine periods of congestion and evaluate whether Duke operating activities are consistent with competitive

¹ As allowed for in the monitoring plan, certain anomalous findings related to general market conditions, TSRs, TTC and transmission outages were shared with Duke to obtain clarification prior to submission to FERC and state Public Utility Commissions.

² When we refer to schedule curtailments, we include TLR events because curtailing schedules is the main method used under the TLR procedures to manage congestion.

Duke Monitoring Report: Second Quarter 2015

conduct. The operating activities that we evaluate are wholesale purchases and sales, generation dispatch and availability and transmission availability.

In addition to our periodic reviews, we may be asked or we may deem it necessary to undertake a special investigation in response to specific circumstances or events. No such events occurred during the period covered in this report.

B. Summary of Quarterly Report

The following subsections summarize the findings of our monitoring of Duke's operations during the second quarter of 2015.

1. Wholesale Prices and Transactions

Prices. We evaluated regional wholesale electricity prices in order to provide an overview of general market conditions. Over the course of the study period, electricity prices fluctuated between \$25 and \$50 per MWh and remained highly correlated with load patterns and natural gas prices. There were no major price spikes during the second quarter.

Sales and Purchases. Duke engages in wholesale purchases and sales of power on both a short-term and long-term basis. [REDACTED]

[REDACTED]

[REDACTED]

2. Transmission Congestion

We used TLR events and schedule curtailments in the vicinity of Duke to identify periods of congestion. Duke manages transmission congestion with generation redispatch, transmission system reconfiguration, and schedule curtailments.³ Of these, schedule curtailments have the most direct impact on market access and outcomes. During the period of study, there were no schedule curtailments or TLRs initiated by Duke. There were 40 TLR events in the region initiated by other transmission operators and 26 curtailments not associated with TLRs. As

³ We use the term "schedule" loosely in this context. It is actually NERC e-TAGs that are curtailed. Each e-TAG represents a physical sequence and time series of schedules. Therefore, one e-TAG may be comprised of multiple schedules. It is also possible for the same e-TAG to be curtailed more than once.

discussed herein, we find no unjustified actions by Duke that caused the need for the curtailments.

All curtailments, regardless of their basis, are important because they have the same impact on reducing transmission access. However, only schedules that are curtailed based on physical flow (including TLRs) are potentially influenced by Duke's operation of generation. We analyzed the impact of Duke's generation operations on the flow-based curtailments and found that uneconomic dispatch of Duke's generation did not significantly contribute to the curtailments.

3. Transmission Access

We evaluate the patterns of transmission requests and their disposition to determine whether market participants have had difficulty accessing Duke's transmission network. If requests for transmission service are frequently denied unjustifiably, this could indicate an attempt to exercise market power. The volume of accepted requests during this study period was higher than in the second quarter of 2014 and the approval rate was also high, averaging 99 percent. Given the high volume of service sold and the low level of refusals, we do not find a pattern in the disposition of transmission requests that indicates restricted access to transmission.

We evaluated the flowgates that caused Transmission Service Request (TSR) refusals. The largest contributor to TSR refusals that occurred during the period of study for daily and hourly service was the "Riverview to Peach Valley" 230 kV flowgate. We performed a comparison of the calculated base flows from the ATC model builder process with real-time flows associated with a select group of TSR refusals and found calculated flows to be reasonably accurate. We do not find that accuracy of the process indicates anticompetitive conduct.

4. Potential Anticompetitive Conduct

Wholesale Sales and Purchases. We examined real-time sales and purchases that were delivered during the period of study. We focused on intra-day bilateral contracts because these best represent the spot price of electricity in markets served by Duke and are the means by which Duke would likely profit by raising wholesale electricity prices. Under a hypothetical exercise of market power, we would expect higher sales prices or lower purchase prices during periods when transmission congestion arises. Daily average transaction prices ranged from \$■ to \$■

per MWh, and there were no days when Duke's net sales position appears to have potentially benefited from congestion.

Generation Dispatch and Availability. We examined the joint dispatch of the combined Duke and Progress generation assets to determine the extent to which congestion may be caused or exacerbated by uneconomic dispatch. Congestion can occur even when Duke or any other utility dispatches its units in a least-cost manner. Such congestion does not raise competitive concerns. If an unjustified departure from least-cost dispatch ("out-of-merit" dispatch) occurs and contributes to congestion, further analysis is warranted to determine whether Duke's conduct raises competitive concerns.

Using an estimated supply curve, we analyzed Duke's actual dispatch to determine whether it departed significantly from what we estimate to be the most economic dispatch. We then evaluated the contribution of the out-of-merit dispatch to flows on congested transmission paths to determine if congestion was either created or exploited by Duke. Our investigation into these events did not find that the out-of-merit dispatch of generation contributed to congestion during the study period.

We also conducted an analysis of potential economic and physical withholding to further evaluate generation operations. Our measures of potential economic and physical withholding were not indicative of anticompetitive conduct. Evaluation of generation outage rates revealed no evidence that generation outages were associated with anticompetitive conduct.

Transmission Availability. We evaluated Duke's transmission outage events in order to determine whether these events may have unduly impacted market outcomes during the study period. In this evaluation we found no evidence of anticompetitive conduct.

5. Conclusions

Our analysis indicated no potential anticompetitive conduct from operation of the company's transmission system or generation.

C. Complaints and Special Investigations

No complaints were filed and no special investigations were initiated this quarter.

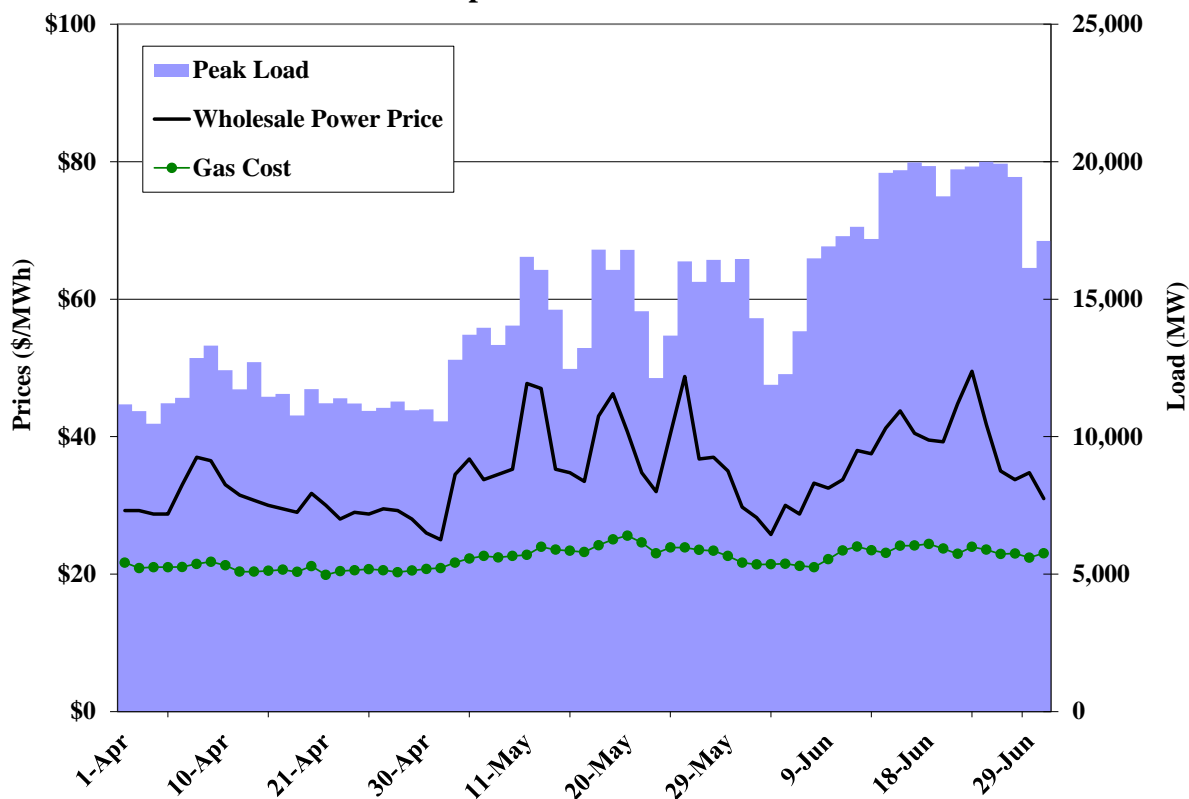
II. Wholesale Prices and Transactions

A. Prices

We evaluated regional wholesale electricity prices in order to provide an overview of general conditions in the market in which Duke operates. Although they are not definitive indicators of anticompetitive conduct, examining price movements can provide insight into specific time periods that may merit further investigation.

Duke is not part of a centralized wholesale market that produces transparent spot prices. Wholesale trading in the areas in which Duke operates is conducted under bilateral contracts. Bilateral contract prices are collected and published by commercial data services such as Platts, which we relied upon for this report. Platts publishes prices at various pricing points, including the VACAR (Virginia, Carolinas) sub-region of the South East Reliability Council (SERC), which includes Duke's control area. Figure 1 shows the bilateral contract prices for VACAR along with other market indicators.

**Figure 1: Wholesale Power Prices, Peak Load, and Natural Gas Costs
April 2015 – June 2015**

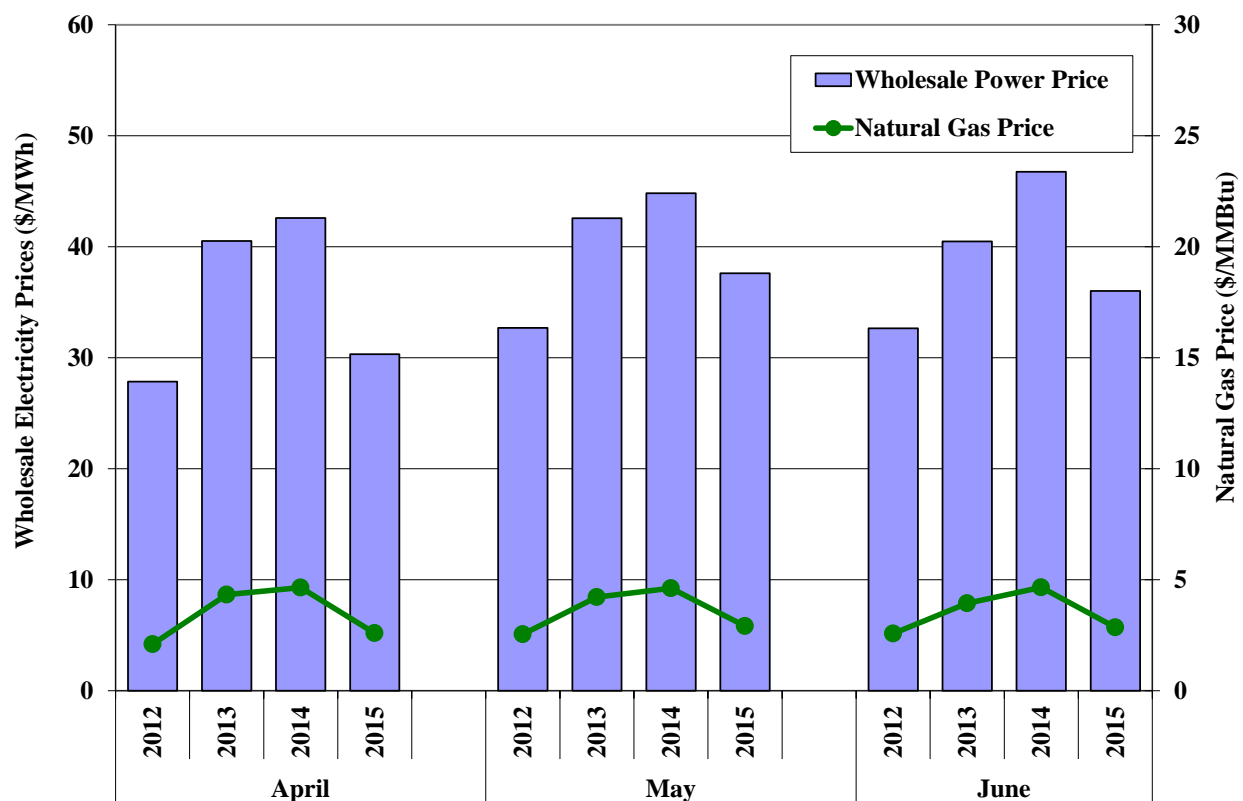


We show system load data because system load typically displays a positive correlation with power prices. We show natural gas costs because a natural gas-fired unit is most often the marginal unit supplying the grid, and because fuel costs comprise the vast portion of a generating unit's marginal costs. We used the daily price of natural gas deliveries by Transco at its Zone 5 location, a primary pricing point for natural gas purchases by Duke. We translate this natural gas cost to a power price by assuming an 8,000 btu/kWh heat rate. This roughly corresponds to the fuel portion of the operating cost of a natural gas combined cycle unit, which should generally correspond to the competitive price for power.

Wholesale power prices ranged from approximately \$25 to \$50 per MWh over the study period and were correlated with load patterns and natural gas prices. As the figure shows, there were no major price spikes during the second quarter. Otherwise, loads generally increased towards the end of the quarter and natural gas prices traded in a narrow range throughout the period.

The next analysis compares the average VACAR power price for each month in the study period with the corresponding month in the previous three years. Results are shown in Figure 2 along with the average of the daily Transco Zone 5 natural gas prices.

**Figure 2: Trends in Monthly Power and Natural Gas Prices
Second Quarter, 2012 – 2015**



As the figure shows, power prices have generally been correlated with natural gas prices over time. Accordingly, the decrease in power prices for each month of the quarter can largely be explained by the sharp drop in natural gas prices from 2014 levels. Overall, our evaluation of wholesale electricity prices in the Duke region does not raise concerns for time periods that warrant further attention.

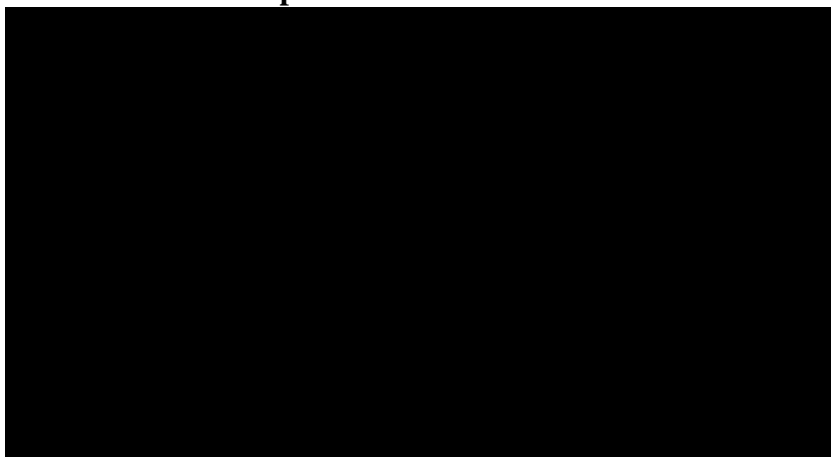
B. Sales and Purchases

Duke engages in wholesale purchases and sales of power. These transactions are both firm and non-firm in nature. Figure 3 summarizes Duke's sales and purchase activity for trades that were delivered during the study period.

We consider only short-term trades (transactions taking place in the day-ahead or intra-day markets) because we are primarily interested in transactions that could have allowed Duke to benefit from any potential market abuse during this time period. Longer-term transactions

generally occur at predetermined prices that would not be directly affected by transitory periods of congestion. Additionally, short-term transaction prices are good indicators of wholesale market conditions during periods of congestion.

**Figure 3: Summary of Duke Sales and Purchases
April 2015 – June 2015**



As the figure shows, Duke's [REDACTED] In general, a market participant exercising market power would be a short-term net seller making short-term sales at high prices, or a short-term net buyer making short-term purchases at low prices. The fact that Duke's [REDACTED] suggests that if Duke had the *ability* to affect prices, then they may have had the incentive to use that ability to [REDACTED] prices. In this context, we evaluate the prices of real-time transactions during congested periods in Section V.A in order to detect potential anticompetitive conduct.

III. Transmission Congestion

A. Overview

Duke is located in the SERC region of the North American Electric Reliability Council (“NERC”) and is a certified Electric Reliability Organization. SERC is divided geographically into five sub-regions that are identified as Delta, Gateway, Southeastern, Central, and VACAR. For the establishment of Reliability Coordinators, VACAR is further divided into two intraregional coordination groups known as VACAR North and VACAR South. Duke is within the VACAR South coordination group along with five other balancing authorities: Progress Energy Carolinas, Inc., South Carolina Electric & Gas Company, South Carolina Public Service Authority (Santee Cooper), Southeastern Power Administration, and Yadkin (a division of Alcoa Power Generation, Inc.).

Procedures to manage transmission congestion are implemented by the VACAR South Reliability Coordinator. The activities covered in these procedures include performing day-ahead and real-time reliability analysis, working with participants to correct System Operating Limit (“SOL”) and Interconnection Reliability Operating Limit (“IROL”) violations, and managing TLR events.

The VACAR South coordination group utilizes an “Agent” to perform RC tasks. Duke, in addition to being a member of the VACAR South coordination group, is contracted to serve as Agent to perform the duties of RC for itself and the other five VACAR South member companies. The transmission monitoring plan calls for monitoring Duke’s operation of its transmission system to identify anticompetitive conduct, including conduct associated with system operations and reliability coordination.⁴ Our monitoring is limited to conduct associated with Duke’s transmission system and does not extend to Duke’s RC activities as Agent for the VACAR South coordination group.

⁴ See Transmission Service Monitoring Plan, Section 1.2.

B. Transmission Congestion

We monitor Duke for potential anticompetitive operation of generation or transmission facilities that may create transmission congestion or otherwise create barriers to rival companies' access to the markets. Duke identifies congestion in the operating horizon through real-time contingency analysis ("RTCA"). In this process, operators monitor line-loadings to keep them within ranges so that a system outage or "contingency" can be sustained safely. If line-loadings exceed this safe range (called the system operating limit or "SOL"), then the lines are relieved⁵ through a combination of generation redispatch, reconfiguration, schedule curtailments, and load reduction.⁶

Congestion between balancing authorities is monitored and managed through the use of TLR procedures. These procedures invoke schedule curtailments, system reconfiguration, generation redispatch and load shedding as necessary to relieve congestion by reducing flows below the first-contingency transmission limits on all transmission facilities.

Schedule curtailments or TLR events can constitute anticompetitive conduct if they are not justified. They cause an immediate reduction in market access that could affect market outcomes. Accordingly, these congestion events are the basis for our screening of Duke's generation and transmission operations.

For the purposes of our analyses, we consider two types of schedule curtailments. The first type is "flow-based curtailments," which are curtailments to accommodate the actual physical flows on facilities as identified by the RTCA. We include TLR events⁷ as flow-based curtailments. The second type is "non-flow-based curtailments". Non-flow-based curtailments capture all curtailments that are taken for reasons other than relieving real-time flows on congested transmission elements. While non-flow-based curtailments have the same effects on market access as flow-based curtailments, these curtailments are not caused by the operation of generation.

⁵ Some contingency overloads do not require action to be taken because they do not have the potential to cause cascading outages, substantial loss of load or major equipment damage.

⁶ System reconfiguration actions may include opening tie line breakers, which can cause TTC to go to zero and induce schedule curtailments.

⁷ The types of TLR events that we include are 3a, 3b, 5a and 5b.

Duke Monitoring Report: Second Quarter 2015

During the period of study, there were 40 TLRs in the region resulting in the curtailment of six schedules that used Duke's transmission service. Duke did not initiate any of these TLRs.

There were also 26 non-TLR curtailments, none of which were initiated by Duke. These curtailments were initiated for various reasons including lack of generation, interface scheduling, PJM minimum generation events and credit limits. We have no reason to suspect that any of these curtailments were influenced by Duke.

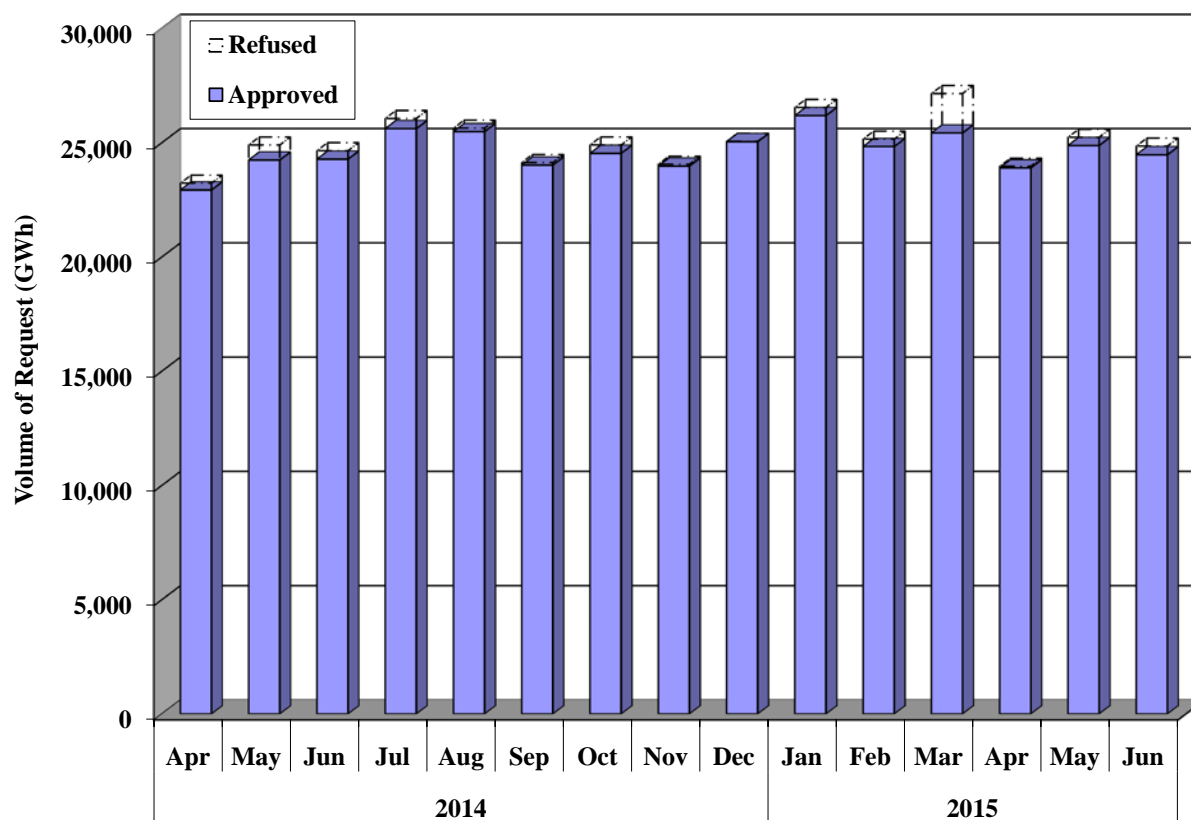
Even though Duke did not initiate these curtailments during the quarter, Duke Operations could adversely impact the transmission network and lead other security coordinators to initiate curtailments. Accordingly, we evaluate all curtailments and TLRs that Duke could plausibly have affected through its operations. These "flow-based" curtailments do not include those associated with PJM minimum generation events because Duke's generation or transmission assets do not significantly contribute to PJM minimum generation events.

IV. Transmission Access

A primary component of the transmission monitoring function is to evaluate transmission availability on the Duke system. In this section, we evaluate access to transmission by analyzing the disposition of transmission service requests. The patterns of transmission requests and their disposition are helpful in determining whether market participants had unreasonable difficulty accessing Duke's transmission network.

We calculated the volume of requested capacity in the quarter. For example, if a request was approved in April for service in September, we categorize that as an approval for September. Because requests vary in magnitude and duration, we assign a total monthly volume (GWh) associated with a request, which provides a common measure for all types of requests. Hence, a yearly request for 100 MW has rights for every hour of the month for which the request spans, just like a monthly request. A request covering less than the entire month is assigned for each hour between its start and stop date.

**Figure 4: Disposition of Requests for Transmission Service on the Duke System
April 2014 – June 2015**



Duke Monitoring Report: Second Quarter 2015

Figure 4 shows the breakdown of transmission service requests in each month from April 2014 through June 2015 and summarizes the disposition of the requests.

The total volume of approved requests during the study period was 73,237 GWh, which was approximately four percent less the prior quarter and approximately three percent greater than the second quarter of 2014. The total volume of refused requests during the study period was 817 GWh, which was just 34 percent of the refused volume in the prior quarter and 61 percent of the refused volume in the second quarter of 2014. The approval rate of transmission service requests was 99 percent for the study period, up from 97 percent in the prior quarter and from 98 percent in the second quarter of 2014. Given the higher volume of approved requests and the low volume of refused requests, we do not find evidence that Duke restricted access to transmission capability in the quarter.

To further evaluate the disposition of transmission requests, we compared the volume of transmission requests over the study period by increment of service to the requests from the corresponding period a year prior. This comparison is shown in Figure 5.

**Figure 5: Disposition of Transmission by Duration of Service
Second Quarter, 2014 – 2015**

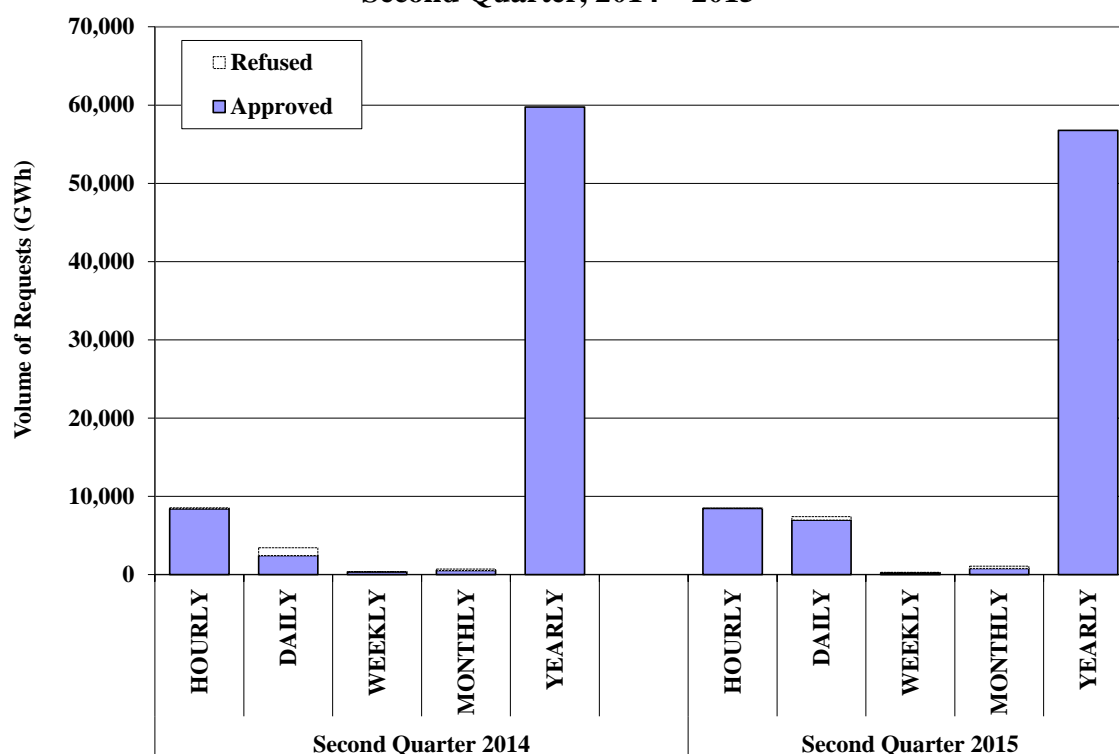


Figure 5 indicates increases in the volume of approvals from the second quarter of 2014 for hourly, daily, and monthly service increments. There was a decrease in approvals for weekly and yearly service increments. Yearly service continued to make up the largest share of transmission requests, and there were no refusals of yearly service during the study period. The approval rate of requests for hourly and daily service increased from the second quarter of 2014, while the approval rate of requests for weekly and monthly service decreased by small amounts. The conditions behind the refusals for daily and hourly service will be examined further in the key flowgates analysis that follows.

To further analyze transmission access, our next analysis focused on a set of key flowgates that most limit transmission access.⁸ In the AFC methodology used by Duke to assess transmission requests, transmission service is analyzed against the physical elements that a request impacts, rather than just the contract path (as was done previously in the Area Interchange methodology). Using the AFC methodology, specific physical facilities (flowgates) are identified across the balancing area and the adjacent balancing areas. The flows associated with the TSR on the flowgates are calculated as the product of the TSR capacity and the Transfer Distribution Factor (TDF). The TDF indicates the flow on each flowgate associated with the specific transfer between two areas. Flows on a flowgate with TDFs below a minimal amount (3 percent or 5 percent) are set to zero in this process. The TSR is only approved if it does not cause any flowgate to exceed its Total Flowgate Capability (TFC). For area to area transfers, the TSR is approved if it does not cause the contract path limit to be exceeded. The process takes into account load forecasts, transmission outages, generation outages, existing TSR rights and schedules.

This process may provide incentives for Duke to implement the AFC methodology in a way that reduces AFC and thereby excludes competitors. Therefore, we monitor this process by selecting and evaluating flowgates that were the basis of TSR refusals. We review the circumstances surrounding the AFC results to ensure that the results are proper and justified.

⁸ The study of key flowgates takes the place of our prior analyses of key paths. Prior to the second quarter of 2011, we assessed TTC reductions that may have limited market access on key paths. Our new analysis was developed as a result of the adoption of the AFC methodology.

Duke Monitoring Report: Second Quarter 2015

To provide a perspective of the interconnections of the balancing authorities that comprise the paths that use Duke's transmission service and which of these are in the VACAR South intraregional coordination group, see Figure 6 below. The acronyms have the following meanings:

- CPL: CPLE and CPLW refer to the eastern and western portions of Progress Energy's service territory in North and South Carolina (formally known as Carolina Power and Light). Effective July 2, 2012, Progress Energy Inc. merged with Duke Energy Corporation. At the time of this report, CPL and DUK continue to operate as separate balancing authorities even though the two systems are jointly dispatched.
- DUK: Duke Energy Carolinas
- PJM: PJM Interconnection
- SC: South Carolina Public Service Authority (Santee Cooper)
- SCEG: South Carolina Electric & Gas Company
- SOCO: Southern Company
- TVA: Tennessee Valley Authority
- YAD: Yadkin division of Alcoa

Figure 6: Key Paths

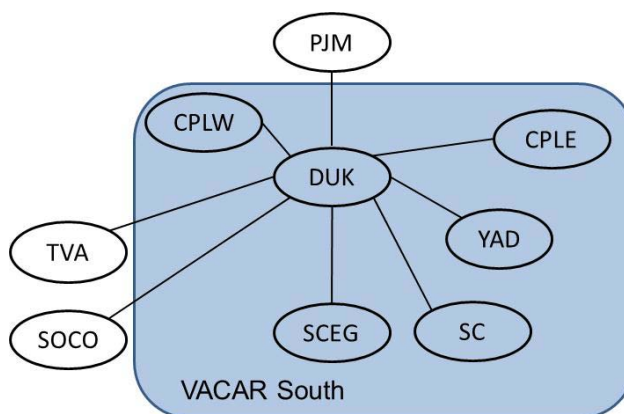
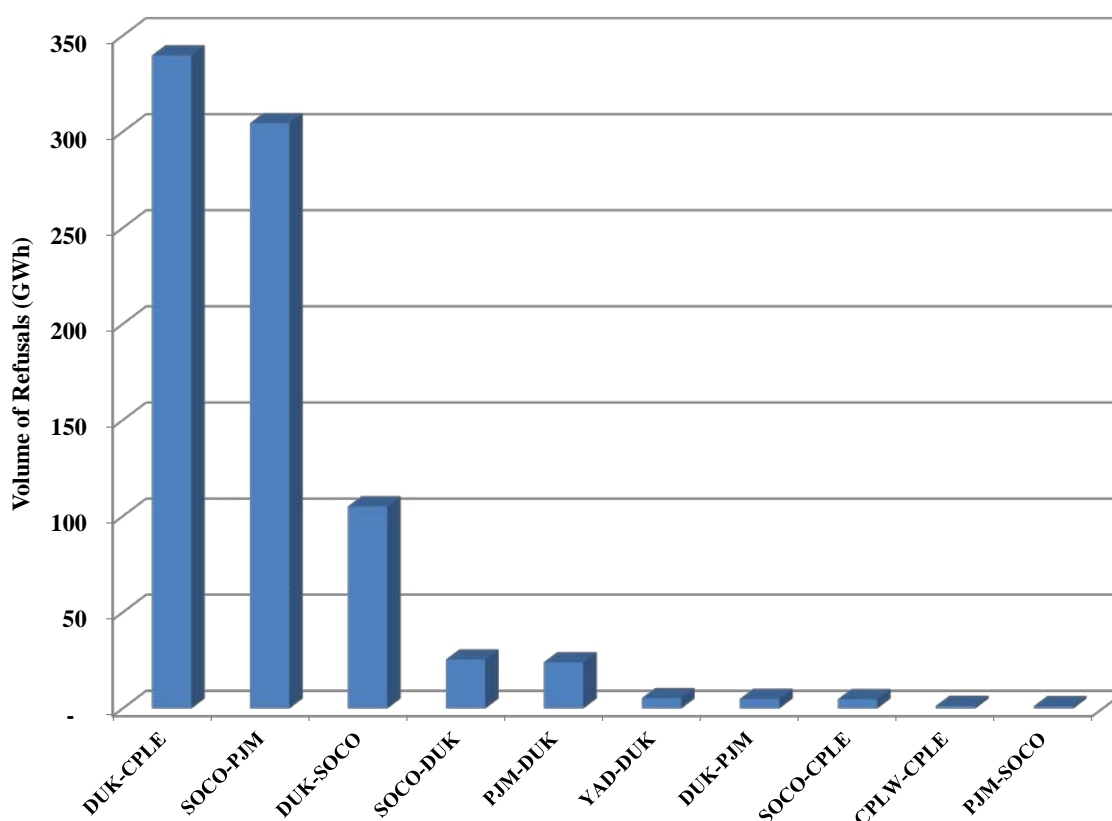


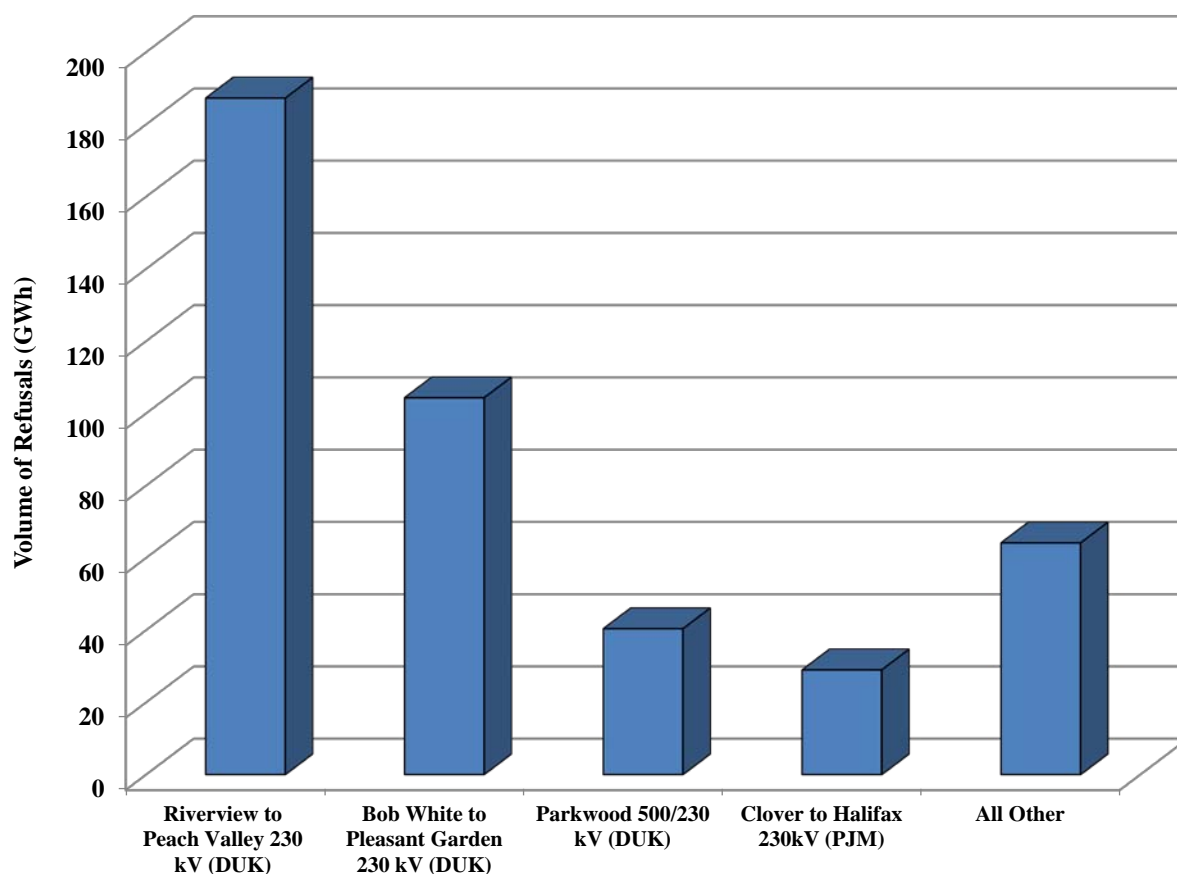
Figure 7 shows the TSR refusals on the ten paths that experienced the most refusals for service during the quarter.

**Figure 7: TSR Refusals by Path
April 2015 – June 2015**



To analyze the justification of the refusals on these paths, we identified the limiting flowgates behind each TSR refusal and then grouped the flowgates by physical proximity of the monitored elements. We only included the TSRs that were refused during the current quarter. We evaluate the Company’s conduct, such as providing the process with reasonable values on flowgate ratings, transmission and generation operations, and committed use. Also, because we evaluated the refusals by reviewing the most recently calculated flows on the flowgates (as described below), we restricted the refusals under review to hourly and daily service increments (“current” TSRs). Reviewing longer term service in this way would not be meaningful because the flow calculations used in the TSR refusals would be from calculations performed well in advance of the service being requested. Flowgate groupings associated with this quarter’s TSR refusals for hourly and daily service are listed in Figure 8 below.

**Figure 8: Key Flowgates Linked to Current TSR Refusals
April 2015 – June 2015**



The flowgate data in Figure 8 is also useful for analyzing Duke’s ATC values. Duke’s method for calculating ATC is a two-step process. The first step uses a “Model Builder”, which is a power-flow model that calculates base flows and Transmission line Distribution Factors (“TDFs”) based primarily on the planned generation dispatch and the expected topology of the transmission system. The Model Builder considers generation dispatch to meet network and native load requirements and also accounts for planned transmission and generator outages. The key output is the loading on various transmission flowgates. The second step in the process is the “ATC Calculator”, which uses line loadings from the Model Builder output. This calculator adjusts the AFC values to reflect schedules and transmission service requests, as well as contract path limitations in order to determine ATC.⁹

⁹ The procedures used by the AFC Calculator to determine the final ATC are defined in Attachment C of the Duke Tariff. Further detail on Duke’s methods for establishing ATC are provided in the document “Duke

Adjusting AFC to reflect transmission rights being purchased and then scheduled is expected and reasonable. Because we are interested in the impacts of Duke's generation and transmission system operations on transmission access, we reviewed the results of the Model Builder base flows excluding the effects of TSRs and schedules. The flowgate rating less the estimated post-contingent base flow on each flowgate gives a value we call the "Base AFC". Essentially, it is capacity remaining on the flowgate after the anticipated flows on each flowgate from the forecast generation, load, and transmission system topology. If the base AFC is not accurate, it can reduce the posted AFC values. For the top four groups of key flowgates in Figure 8, we analyzed the Base AFC metric. The analyses are presented in Figure 9 through Figure 12.

In each of the figures, the shaded bars indicate days when there were TSR refusals due to lack of AFC on that particular flowgate. For the purposes of these analyses, we only highlight days with hourly or daily refusals. This allows us to isolate any relationship between the daily and hourly refusals and the Base AFC values.

We sought to understand the circumstances when a drop in Base AFC (shown by the solid line) was coincident with a TSR refusal in order to ensure that the refusals were proper and justified. In particular, when the Base AFC decreases, it can lead to a smaller amount of transmission capacity for sale to the market. On days when a Base AFC drop occurred coincident with a TSR refusal, we identified possible causes for the drop, including transmission outages and generation forecasts in the Model Builder.

We include a dotted line labeled "Generation Contribution." This is an estimate of the effect of Duke and Progress generation on the Base AFC. It is the sum of the products of the generation shift factors (defined in the counter flow direction) and the real-time generation from Duke and Progress generators. Hence, changes in the Generation Contribution should lead to changes in base AFC values in the same direction. However, Base AFC is also impacted by transmission topology changes, load patterns, and generation changes external to the Duke system. Large Generation Contribution changes are sometimes the results of generation outages. The Model

Energy Carolinas Available Transfer Capability Implementation Document (ATCID)" which is posted on their OASIS site.

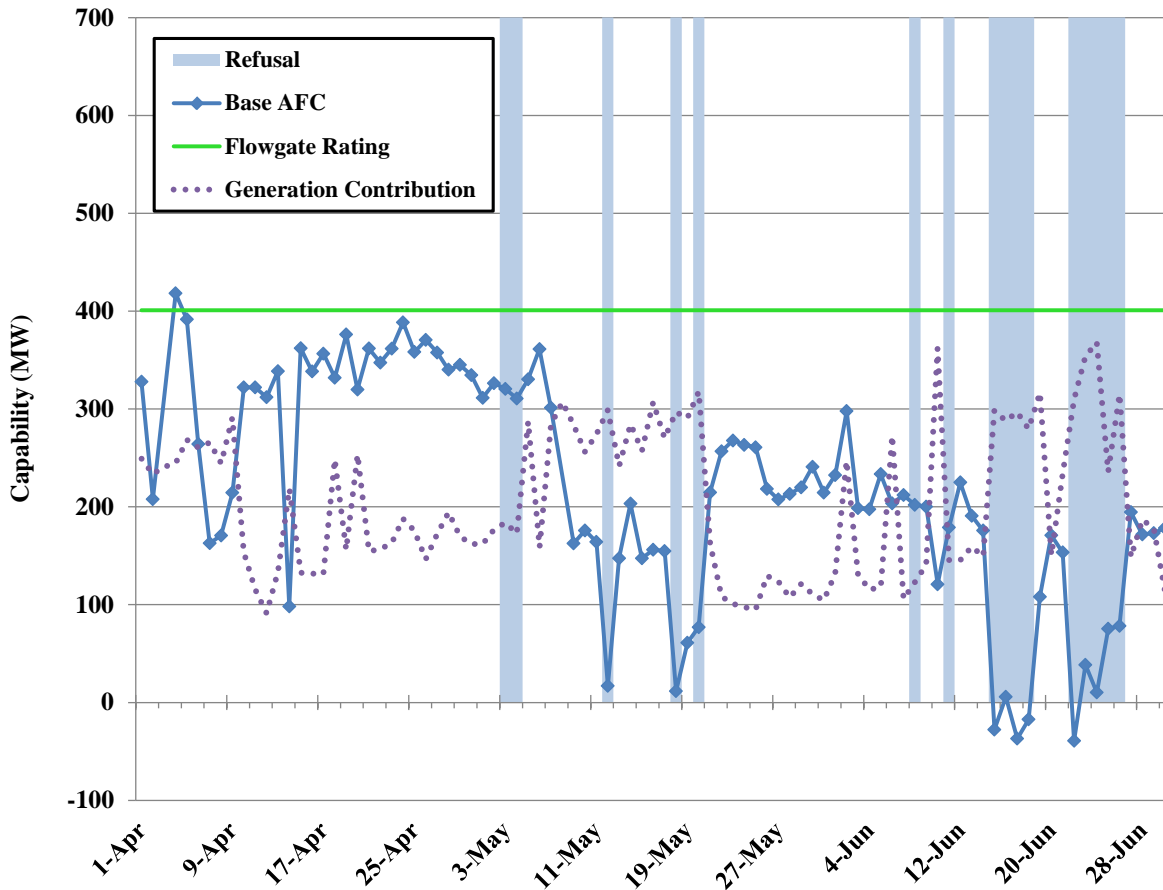
Duke Monitoring Report: Second Quarter 2015

Builder uses forecast dispatch, which will reflect scheduled outages. Immediate unplanned outages may not have been known in time to be included in the Model Builder assumptions. Differences between actual dispatch and planned dispatch can lead to inaccuracies in the AFC process.

The specifics of our analyses vary depending on the owner of each flowgate. When the owner is an entity other than Duke, that entity calculates its own AFC values which supersede the values calculated by Duke.¹⁰ We indicate the flowgate owner as a suffix to the flowgate name. For all flowgates, we reviewed Duke transmission outages and generation operations. Study dates are selected from events where downward spikes in Base AFC were coincident with TSR refusals. We also checked for changes in flowgate ratings for Duke flowgates and in some cases, verified the accuracy of the modeling results by comparing forecasted flows with the flows observed in real-time operations. We first check to see if the flowgates were logged as having real-time contingency violations on the study dates. If they were, then any value of Base AFC leading to TSR refusals for those days is considered accurate. If the flowgates do not appear in the contingency violation logs on the study dates, then we review real-time flow data. If real-time loadings peak to within approximately ninety percent of the limits, we again consider the Base AFCs leading to TSR refusals to be accurate, because actions taken in real-time should unload the flowgates to resolve the violations, leaving the flowgates in this range. Finally, if the flowgates are not loaded near the limits in real time, we calculate the observed peak post-contingent flow over the day from the real-time data. We then compare this to the sum of the Base AFC and the TRM plus the rating. This represents the forecasted post-contingent flow. If this forecasted flow is greater than or similar to the observed flow in real time, then the AFC process is deemed to be accurate from the perspective of not understating transmission capability. We now consider each flowgate separately in the following figures.

¹⁰ CPL flowgates are not treated as owned by Duke even though CPL is part of Progress Energy. Although Progress Energy Inc. is now a wholly owned direct subsidiary of Duke Energy Corporation, Progress Energy Inc. and Duke Energy Carolinas, LLC are separate balancing authorities and operate under separate tariffs. The scope of the independent transmission service monitor is to monitor Duke Power which is now known as Duke Energy Carolinas, LLC. Progress Energy Inc. is outside the scope of the current monitoring plan.

**Figure 9: Base AFC – Riverview to Peach Valley 230 kV (DUK)
April 2015 – June 2015**



Riverview to Peach Valley 230 kV (DUK): This Duke flowgate has a contingent element of the parallel line “Riverview to Peach Valley (Black)” 230 kV. This flowgate is a major cause of TSR refusals on the “DUK to CPLE” and “DUK to SOCO” paths. During the quarter there were 29 daily and hourly TSR refusals associated with this flowgate.

The rating on the flowgate, displayed as a green line in the figure, was constant over the study period at [REDACTED] MW.

As seen by the dotted purple line in the figure, Duke and Progress generation had a strong effect on the flowgate, but was not correlated with changes in Base AFC. Most of the variation in Generation Contribution is caused by output changes [REDACTED]

[REDACTED]

[REDACTED]

[REDACTED]

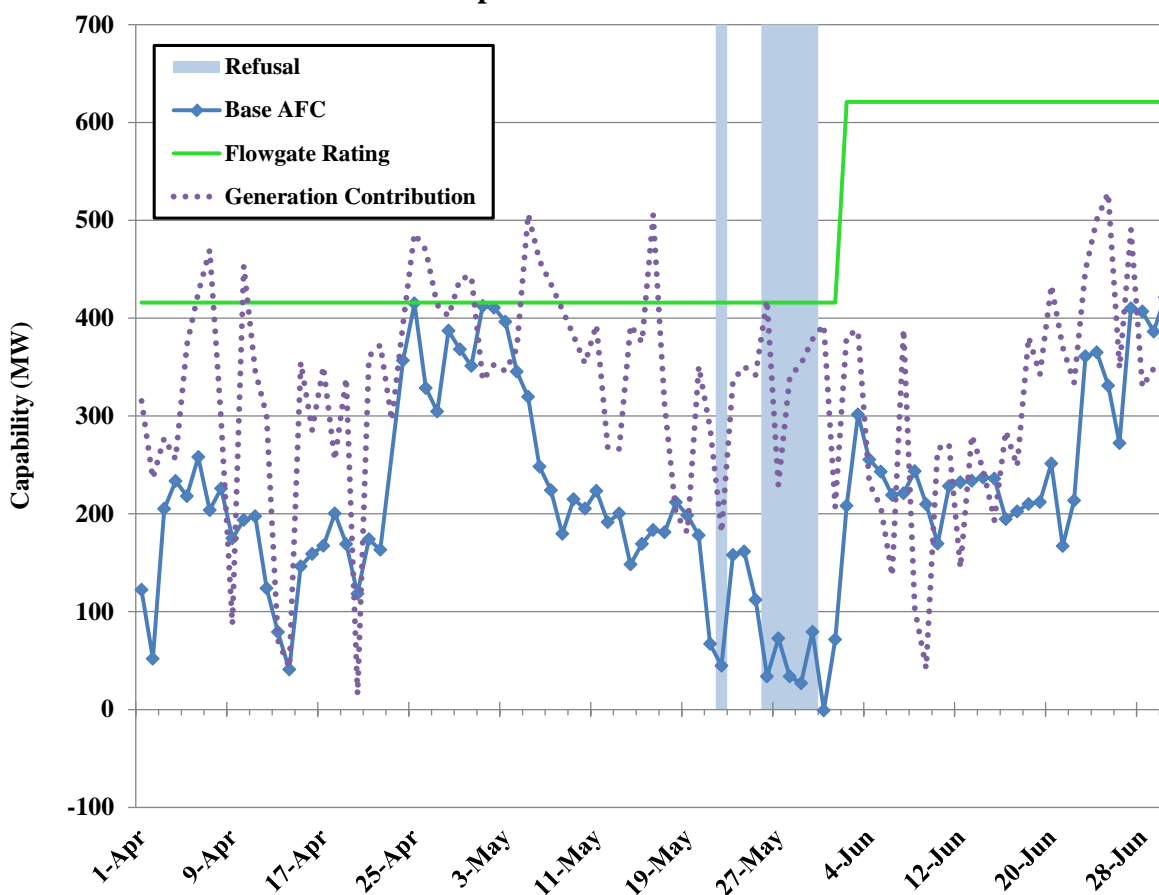
There are resources with stronger shift factors than [REDACTED] but they that typically operate at a more constant output. Overall, the effect of the generation movement was counter to the reductions in Base AFC. This does not support a hypothesis that a change in generation dispatch caused the total flow on the flowgate to change during periods when TSRs were refused. We looked specifically at generation dispatch during the five of the days when Base AFC reductions were coincident with TSR refusals (May 12 and 18, June 15, 17, and 22) and do not find any significant impact caused by Duke and Progress generation dispatch or outages.

We reviewed Duke transmission outages impacting the five days mentioned above and found no transmission outages to be of interest.

Since this is a Duke flowgate, we reviewed the accuracy of the AFC process further by analyzing how close the flowgate was to its operating limits in real time during periods when the Base AFC was negative or near zero coincident with refusals (May 12 and 18, June 15, 17, and 22). We found that in real time, the flows were generally within 90 percent of the operating limit. This indicates that the day-ahead studies were accurate predictors of real-time conditions for this flowgate.

Based on our evaluation of this flowgate, we find no anticompetitive conduct.

**Figure 10: Base AFC – Bob White to Pleasant Garden 230 kV (DUK)
April 2015 – June 2015**



Bob White to Pleasant Garden 230 kV (DUK): This flowgate uses as the contingency the parallel circuit “Bob White to Pleasant Garden (Black)” 230 kV. It is a cause of TSR refusals on the “DUK to CPLE” and “DUK to SOCO” paths. During the quarter there were eleven daily TSR refusals associated with this flowgate.

The rating on this flowgate was revised upward from [REDACTED] MW to [REDACTED] MW on June [REDACTED] 2015 to reflect improvements in breaker controls at the Pleasant Garden substation.

This flowgate is strongly loaded by the [REDACTED] percent shift factor and the [REDACTED] percent shift factor. There is an abundance of generation in the Progress area that unloads the flowgate with about a [REDACTED] shift factor.

We reviewed the Duke and Progress generation dispatch on May 22, 26, and 28 when the Base AFC was low coincident with refusals. In general, generation with a significant effect on the

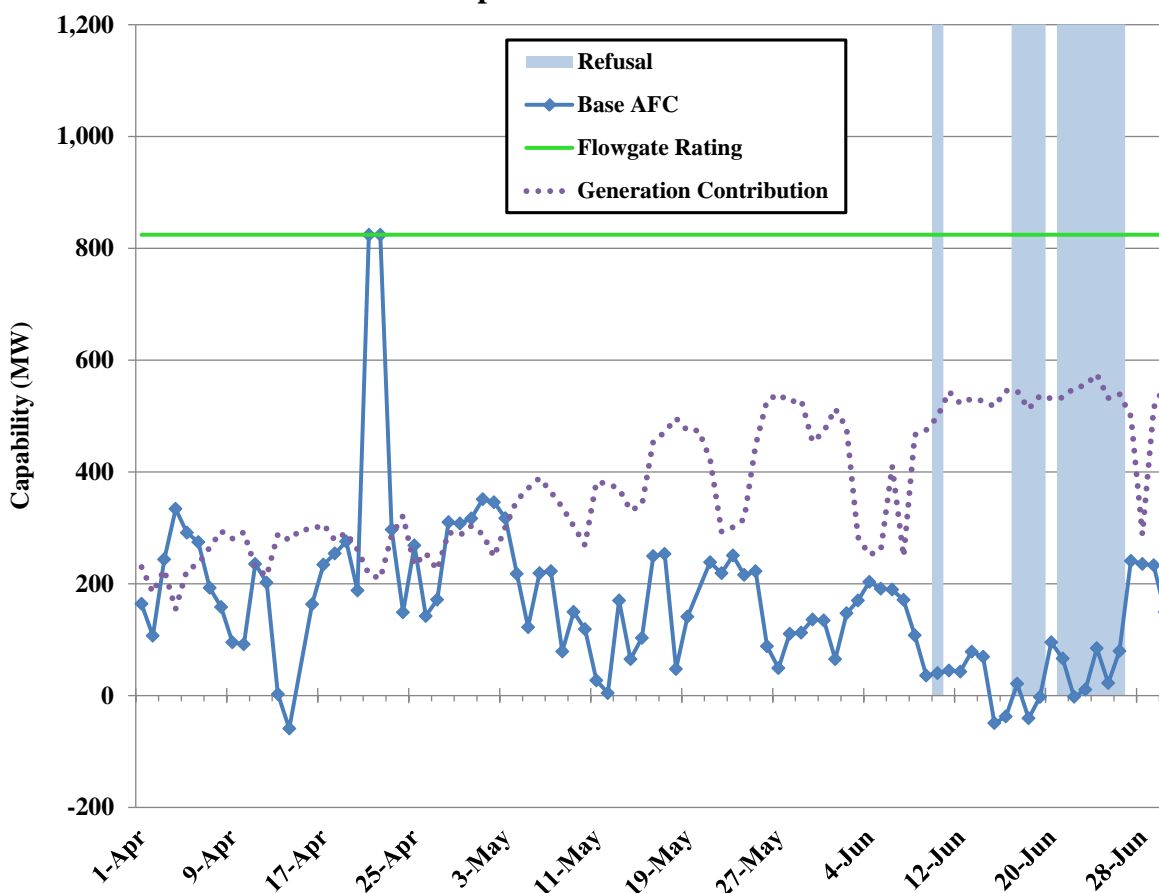
flowgate was either dispatched in merit order, or out of merit in the direction that unloaded the flowgate. An exception was the [REDACTED] At hour ending 13 it was [REDACTED] MW above merit dispatch which loaded the flowgate. However, further analysis indicates that the [REDACTED] MW of out-of-merit generation was caused by transitory ramp-up in order to be fully dispatched for hour ending 16, an hour for which it was in merit. We find no adverse issue with this situation because ramping constraints are not unusual and are inherent in the lumpiness of committing the additional [REDACTED] at the station.

We also reviewed Duke transmission outages impacting these same days, and did not find any transmission outages that significantly affected the flowgate. Thus, we do not consider operations of Duke transmission or generation to be associated with anticompetitive conduct relative to congestion on this flowgate.

Because this is a Duke flowgate, we reviewed the accuracy of the AFC process further by analyzing how close the flowgate was in real time to the forecasted flows on May 22, 26, and 28, when the Base AFC was near zero coincident with refusals. We found that in real time, the flows were less than the forecasted amount by about 25 percent. This indicates that the day-ahead studies were moderately accurate predictors of real-time conditions for this flowgate.

Based on our evaluation of this flowgate, we find no anticompetitive conduct.

**Figure 11: Base AFC – Parkwood 500/230 kV (DUK)
April 2015 – June 2015**



Parkwood 500/230 kV Transformer (DUK): This flowgate uses a parallel Parkwood 500/230 kV transformer as the contingent element. The flowgate was the cause of 16 daily and hourly TSR refusals, mostly on paths sinking to CPLE.

The rating on this flowgate is constant at [REDACTED] MW across the study period.

Duke and Progress generation contributes to the flows on this flowgate, but is not correlated with the Base AFC as can be seen in the above figure. All the generation serves to unload the flowgate to varying degrees, with the [REDACTED] stations having the most influence with shift factors of approximately [REDACTED] percent.

We reviewed the Duke and Progress generation dispatch on June 18, 22, and 25 when the Base AFC was low coincident with refusals. In general, generation with a significant effect on the flowgate was either dispatched in merit order, or out of merit in a direction that unloaded the

Duke Monitoring Report: Second Quarter 2015

flowgate. Exceptions were when [REDACTED] was in derated due to [REDACTED] and [REDACTED] [REDACTED] was derated due to [REDACTED]. We find both of these events to be justified.

We reviewed Duke transmission outages on these same days. Three outages had a significant impact on this flowgate:

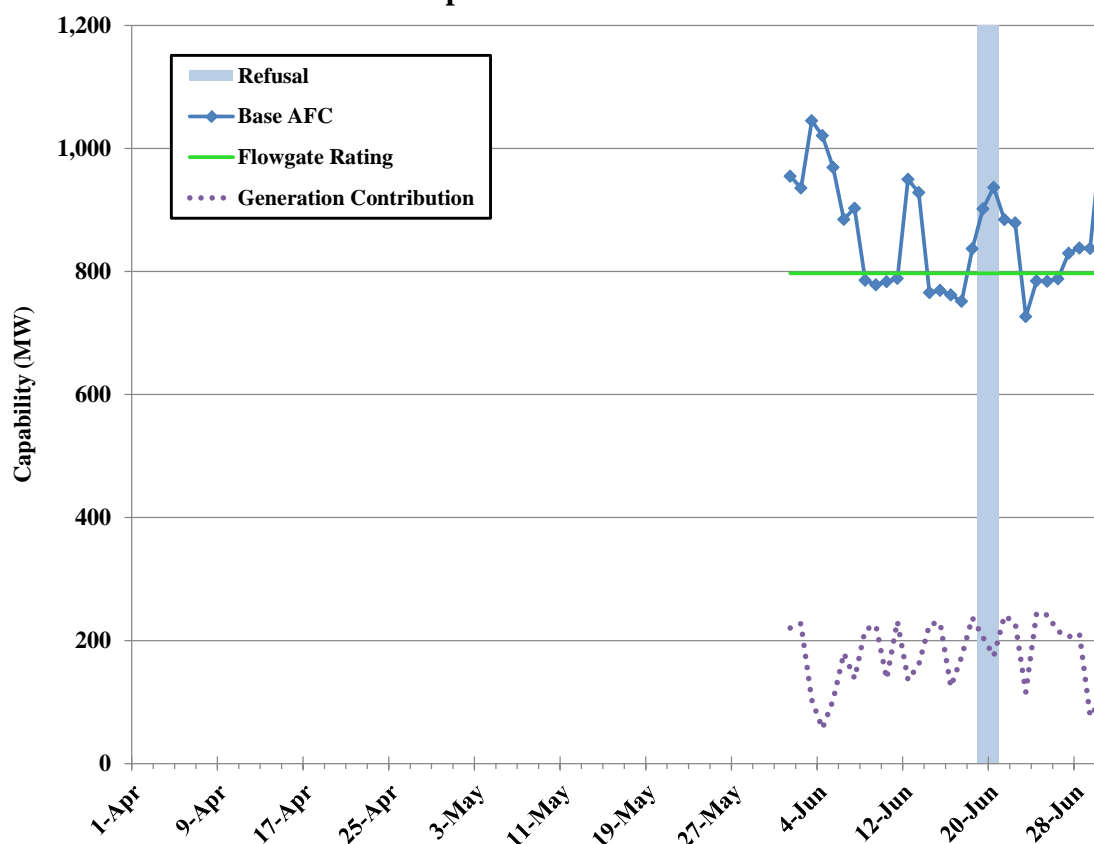
- From May [REDACTED] through June [REDACTED] the [REDACTED] lines were out of service.
- From April [REDACTED] through April [REDACTED] the [REDACTED] was out of service.
- From April [REDACTED] through May [REDACTED] the [REDACTED] was out of service.

We reviewed these outages further in the Transmission Outages section of this report and found them to be reasonable and justified.

Because this is a Duke flowgate, we reviewed the accuracy of the AFC process further by analyzing how close the flowgate was in real time to the forecasted flows on June 18, 22, and 25 when the Base AFC was near zero coincident with refusals. We found that the real-time flows peaked at less than the forecasted values by about 20 percent. Overall, this indicates that the day-ahead studies were reasonably accurate predictors of real-time conditions for this flowgate.

Based on our evaluation of this flowgate, we find no anticompetitive conduct.

Figure 12: Base AFC – Clover to Halifax 230kV (PJM)
April 2015 – June 2015



Clover to Halifax 230kV (PJM): This PJM flowgate has a contingent element of “Clover to Carson” 500 kV. This flowgate first came into use on June 1, 2015 with a flowgate rating of [REDACTED] MW. This flowgate was the cause of one daily and one hourly TSR refusals on the “DUK to CPLE” path. We find it to be significant because the refused TSR was for daily transmission service of 1200 MW.

As can be seen from the Generation Contribution line in the figure, the dispatch of Duke and Progress generation had little effect on the Base AFC. The only generation with significance to the flowgate is the [REDACTED] station unloading the flowgate with a – [REDACTED] percent shift factor, and the [REDACTED] station unloading the flowgate with a [REDACTED] percent shift factor. These generators operated normally and in merit on June 19 and 20 when the refusals occurred.

We did not identify any transmission outages on the Duke system that impacted this flowgate.

Based on our evaluation of flowgates, we find no anticompetitive conduct.

V. Monitoring for Anticompetitive Conduct

In this section, we report on our monitoring for anticompetitive conduct. The market monitoring plan calls for identifying anticompetitive conduct, which includes conduct associated with the operation of either Duke's transmission assets or its generation assets that can create transmission congestion or erect barriers to rival suppliers, thereby raising electricity prices. To identify potential concerns, we analyze Duke's wholesale sales in the first subsection below, its dispatch of generation assets in the second subsection, and Duke's transmission operations in the third subsection.

A. Wholesale Sales and Purchases

We examined transaction data to determine whether the prices at which Duke sold or purchased power may raise concerns regarding anticompetitive conduct that would warrant further investigation. We are particularly interested in congested periods. If Duke were engaging in anticompetitive conduct to create congestion, it could potentially benefit by making sales at higher prices in constrained areas or purchases at lower prices adjacent to constrained areas. We examined the real-time bilateral transactions made by Duke using Duke's internal records. We focus on real-time transactions because anticompetitive conduct is likely to be more successful in the real-time market.

Competition is facilitated by the ability of rivals to gain market access by reserving and scheduling transmission service. Access will be limited if ATC is unavailable, transmission requests are refused, or schedules are curtailed. Curtailments are also an indicator of congestion because they can be made when a path is over-scheduled or physically overloaded. If Duke's ability to curtail schedules is being abused, we would expect to see systematically higher prices for sales or lower prices for purchases coincident with curtailments. Most of the curtailments are caused by TLRs.

Curtailments can be flow-based (i.e., the result of flows exceeding the system operating limit), or non-flow-based. For our analysis of Duke's sales, we use both types of curtailments. This is reasonable because both types of curtailments reduce market access. Moreover, Duke has the direct ability to affect both flow-based curtailments and non-flow-based curtailments. It can

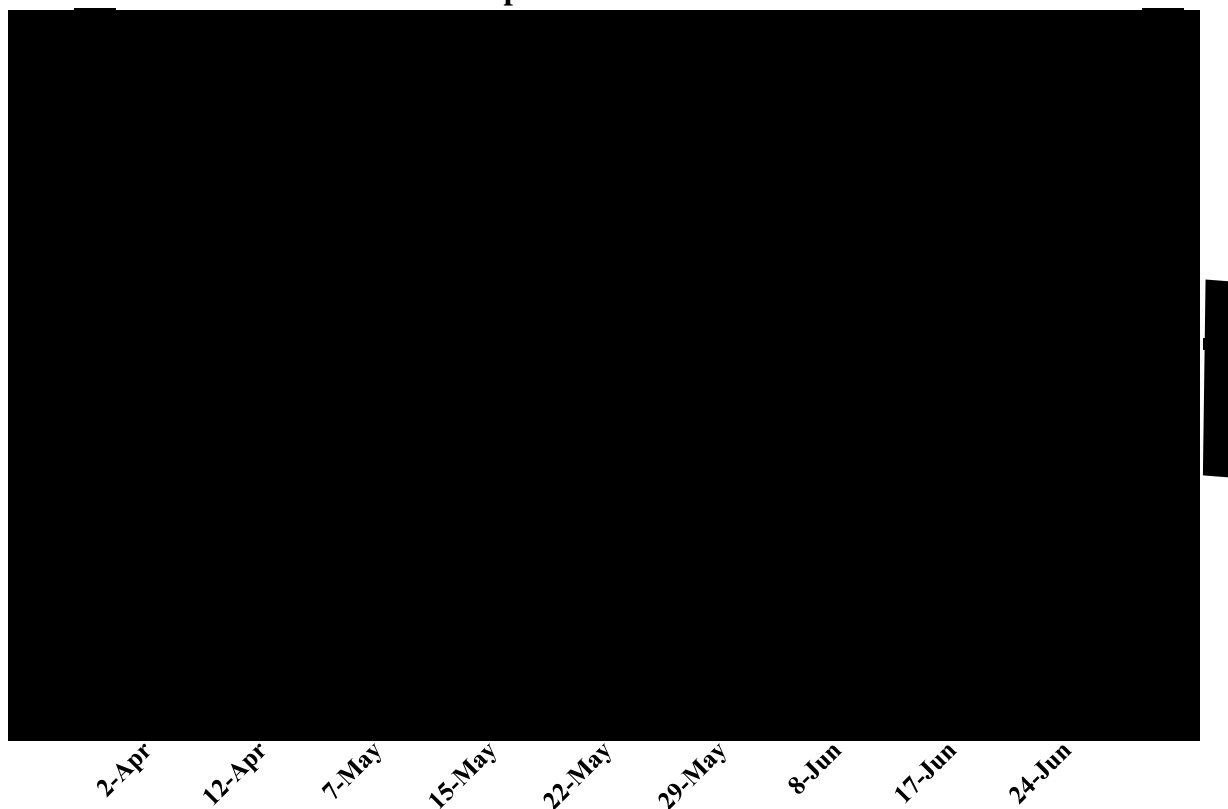
affect flow-based curtailments through operating activities and it can affect non-flow-based curtailments by unjustifiable schedule reductions. By analyzing the relationship of curtailment data to sales activities, we can focus attention on events that merit further inquiry. In particular, we monitor any link between curtailments and Duke's position in the real-time markets that could have potentially benefited from the curtailments. To monitor this, we calculate a measurement called the maximum daily effective market position ("Max Effect"). The Max Effect indicates Duke's trade volume that could have potentially benefited from a particular curtailment. Days with curtailments coincident with high Max Effect levels are days when the curtailments could have potentially allowed Duke to exploit the effect of the curtailment. These days are further evaluated to determine if the transactions were done at pricing levels that are consistent with a pattern of anticompetitive conduct.

The Max Effect is calculated in two steps. First, for each hour, constraint and delivery point, we calculate a shift-factor-weighted¹¹ volume of trades by summing the product of the shift factors and the net trade volumes (purchases minus sales). For each hour and each constraint, the values are summed across all delivery points. Second, from this set of values, we select the maximum value for each day. If the maximum value is positive, we evaluate it more closely.

Figure 13 shows the daily average prices received by Duke for real-time sales and purchases. The blue shading indicates days when curtailments occurred that were potentially beneficial to Duke's positions in the real-time markets as indicated by a positive Max Effect.

¹¹ The relationship between constrained paths and market delivery points is determined through shift factors, which are the portion of power injected at the market delivery point that flows over the constrained transmission path. Shift factors between -.01 and .01 are set to zero.

**Figure 13: Prices for Duke Sales and Purchases
April 2015 – June 2015**



The weighted average daily price of Duke's sales ranged between \$ [REDACTED] and \$ [REDACTED] per MWh. The volume-weighted average daily sales price was \$ [REDACTED] per MWh. On days with potentially beneficial curtailments, the average sale price was \$ [REDACTED] per MWh. The weighted average daily prices of Duke's purchases range between \$ [REDACTED] and \$ [REDACTED] per MWh. The weighted average daily purchase price was \$ [REDACTED] per MWh. On days with potentially beneficial curtailments, the average purchase price was \$ [REDACTED] per MWh. The fact that on average Duke purchased power for more and sold power for less during congestion periods than the study period as a whole indicates that Duke did not benefit from the congestion.

Looking at individual days with congestion, Duke's daily average sales prices were not above average and purchases prices were not below average. We also analyzed whether Duke experienced more favorable transaction prices on congested days when compared with the immediately preceding and subsequent days and found that it did not. Thus, our analyses of the purchases and sales does not identify any days for further review.

B. Generation Dispatch and Availability

We examined the company's generation dispatch to determine the extent to which congestion may have been the result of uneconomic dispatch of generation by Duke. We conducted two analyses. We first determined the hourly quantities of out-of-merit dispatch and the degree to which the out-of-merit dispatch contributed to flows on congested transmission paths. If the contribution is significant, further investigation of these times may be warranted. We use flow-based curtailments because these types of curtailments (as opposed to contract-path-based curtailments) are the ones that would result from unjustified out-of-merit dispatch. Second, we examine the "output gap", which measures the degree to which Duke's generation resources were not fully scheduled when prevailing prices exceeded the marginal cost of running the unit.

Effective July 2, 2012, as part of the merger between Duke and Progress Energy, Duke has been performing a joint dispatch of their generation units and Progress Energies generation units. Because of this, we include both sets of units in our analysis of generation dispatch. We refer to the combined set of units as "Duke's units". However, we do not include the Progress units in the analysis of generation availability.

1. Out-of-Merit Dispatch and Curtailments

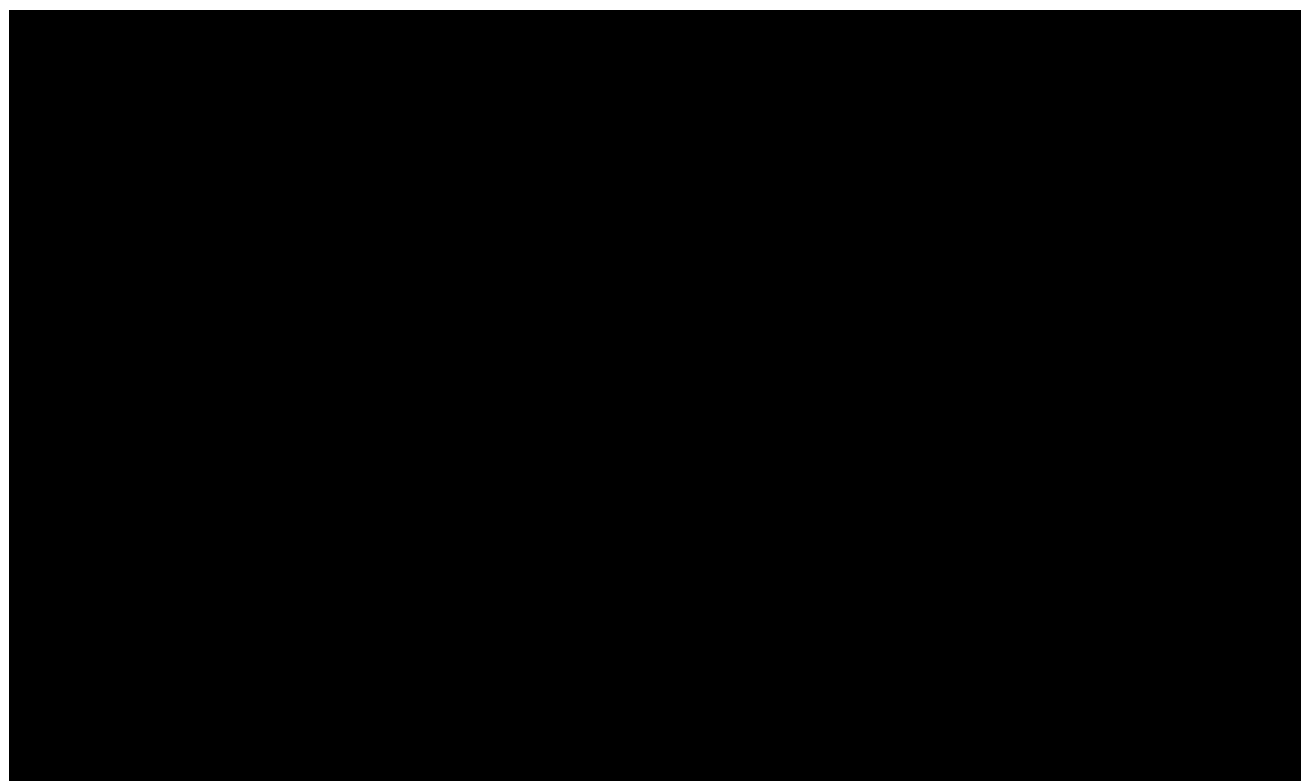
Congestion can be a result of limits on the transmission network when utilities dispatch their units in a least-cost manner. This kind of congestion does not raise competitive concerns. If, alternatively, a departure from least-cost dispatch ("out-of-merit" dispatch) is unjustifiable and causes congestion, it does raise potential competitive concerns.

We pursue this question by measuring the out-of-merit dispatch on the Duke system. In our analysis, we consider a unit to be out-of-merit when it is dispatched in favor of a lower-cost unit that is not fully loaded. To identify out-of-merit dispatch, we first estimate Duke's marginal cost curve or "supply curve".¹² We use incremental heat rate curves, fuel cost and other variable operations and maintenance cost data provided by Duke to estimate marginal costs. This allows

¹² We use the term marginal cost loosely in this context. The value we calculate is actually the *marginal running cost* and does not include opportunity costs, which may include factors such as outage risks or lost sales in other markets.

us to calculate marginal costs for Duke's units. We order the marginal cost segments for each of the units from lowest cost to highest cost to represent the cost of meeting various levels of demand in a least-cost manner. For our analysis, the curve is re-calculated daily to account for fuel price changes, planned maintenance outages and planned deratings.

Figure 14: Duke and Progress Energy Supply Curve



MW of Generation

Note: The figure excludes nuclear and hydro capacity.

Figure 14 shows the estimated supply curve for a representative day during the period of study. The dispatch analysis excludes nuclear and hydro units because their operation is not primarily driven by current system marginal operating costs. Nuclear resources rarely change output levels and the opportunity costs associated with hydroelectric resources make it difficult to accurately estimate their costs.

As the figure shows, the marginal cost of supply increased as more units were required to meet demand. The highest marginal cost was \$[REDACTED] per MWh. We used each day's estimated marginal cost curve as the basis for estimating Duke's least-cost dispatch for each hour in the study period.

In general, this method will not be completely accurate because we do not consider all operating constraints that may require Duke to depart from our estimate of least-cost dispatch. In particular, this analysis does not model generator commitments, assuming instead that all available generators are online. Consistent with this assumption, we limit the hours in this analysis to include only those between the morning ramp and the evening ramp in order to avoid the distortions caused by generation commitments and de-commitments. While the analysis could be expanded to refine the estimated generator commitment and dispatch to make it correspond more closely to actual operating parameters (i.e., start costs, run-time and down-time constraints, etc.), we believe this simplified incremental-operating-cost approach is adequate to detect instances of significant out-of-merit dispatch that would have a material effect on the market.

When a unit with relatively low running costs is justifiably not committed, our least-cost dispatch will overstate the out-of-merit quantities because it will identify the more expensive unit being dispatched in its place as out-of-merit. This may result in higher levels of out-of-merit dispatch during low-load periods when it is not economic to commit certain units.

Other justifiable operating factors that cause the out-of-merit dispatch to be overstated include energy limitations and ancillary services. An example of an energy limitation is a coal delivery problem that prevents a coal plant from being fully utilized. Because the coal plant is still capable of operating at full load for a shorter time period, the condition does not result in a planned outage or derating. The necessity to operate the plant at reduced load to conserve coal can cause the out-of-merit values to be overstated.

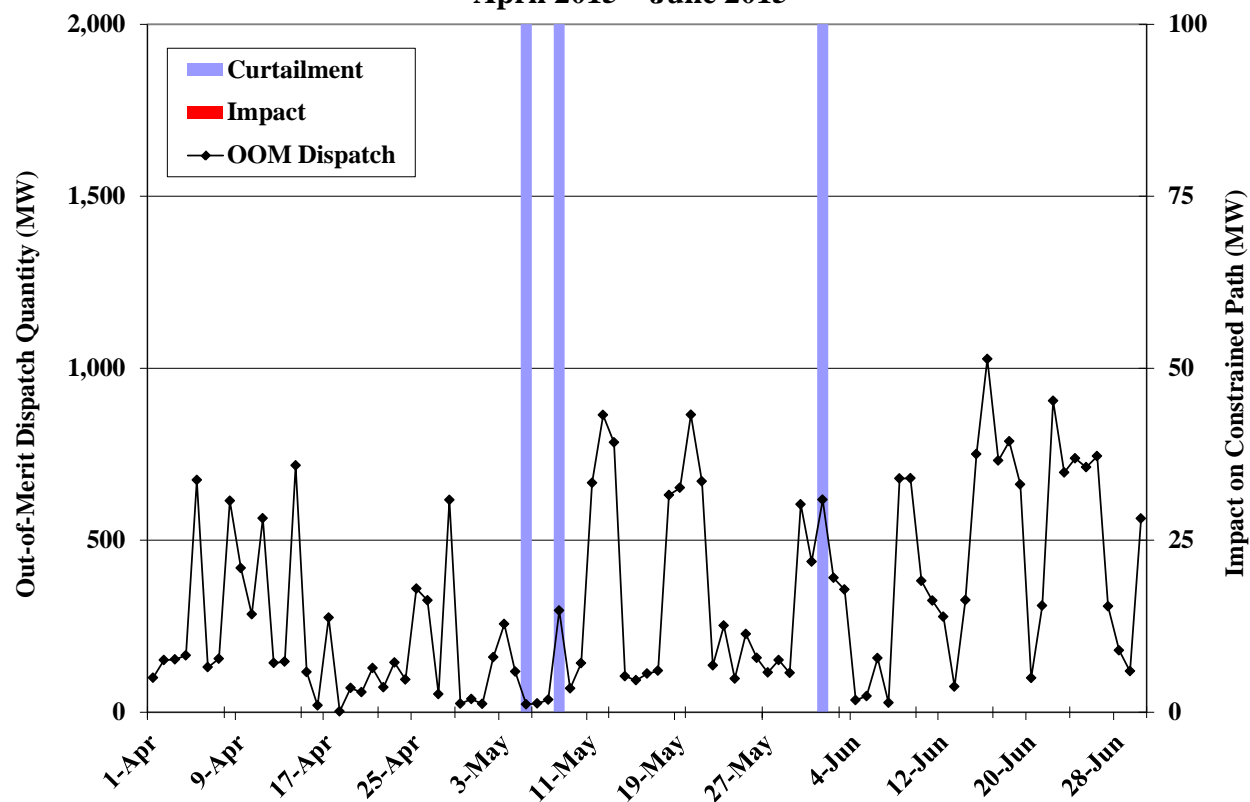
Ancillary services requirements such as spinning reserves, system ramp rate limitations, and Automatic Generation Control (AGC) requirements can make it operationally necessary to dispatch a number of units at partial load rather than having the least expensive unit fully-loaded. These operational requirements can cause the out-of-merit values to be overstated. The out-of-merit quantities include units on unplanned outage since a sudden unplanned outage may be an attempt to uneconomically withhold generation from the market.

Although our analysis will tend to overstate the quantity of generation that is truly out-of-merit, the accuracy of a single instance of out-of-merit dispatch is not as important as the trend or any substantial departure from the typical levels.

In our analysis, we seek to identify days with significant out-of-merit dispatch that coincide with transmission congestion. Congestion is indicated by flow-based schedule curtailments. Flow-based curtailments are those that are taken close to real-time in order to prevent physical flows from exceeding system operating limits. Out-of-merit dispatch can be used to affect these flows and create the need for curtailments, potentially limiting competition in specific locations. Conversely, contract-path-based curtailments are not included because they are the result of reserved rights on the contract paths and are unaffected by real-time dispatch.

Figure 15 shows the daily maximum “out-of-merit” dispatch for the peak hours of each day in the study period, unless there is positive impact. For days with positive impact, the figure shows the impact for the peak hour with the maximum impact and the “out-of-merit” dispatch corresponding to that hour.

Figure 15: Out-of-Merit Dispatch and Congestion Events
April 2015 – June 2015



The figure shows three days with flow-based curtailments (represented by blue bars). Duke dispatch made no impact on these constraints as they were from TLRs on TVA flowgates located in the western part of Tennessee. These TLRs are included because they caused curtailments on schedules that used Duke transmission service. Even though it had no impact, we looked further at June 16, hour ending 14, because it has the peak OOM for the report at 1027 MW. The effect was driven by two units.

- The [REDACTED] station showed OOM up by [REDACTED] MW. The power from the facility is available to [REDACTED] under a power purchase agreement that requires advanced scheduling and is not dispatchable in real time. The cost of the power was only about \$ [REDACTED] per MWh more expensive than the units that would replace it in real time, so the scheduling of the station does not stand out as unreasonable or anticompetitive.

- The [REDACTED] [REDACTED] showed OOM up by [REDACTED] MW at a cost that exceeded what would replace it by only about \$6 per MWh. However, this was a very short-lived effect. By the next hour, all the output plus more from the station was within merit.

As a result, for this quarter, we find no anticompetitive conduct associated with this analysis.

2. Output Gap

The output gap is another metric we use to evaluate Duke's generation dispatch. The output gap is the unloaded economic capacity of an available generation resource. The capacity is economic when the prevailing market price exceeds the marginal cost of producing from that unit by more than a specified threshold. We use \$25 and \$50 per MWh as two thresholds in our analysis. Hence, at the \$25 per MWh threshold, if the prevailing market price is \$60 per MWh and a unit with marginal costs of \$40 per MWh is unloaded, then we do not consider this part of the output gap because the marginal cost plus the \$25 per MWh threshold is greater than the \$60 per MWh market price. However if the marginal cost is \$30 per MWh, we would consider it in the output gap at the \$25 per MWh threshold, but not under the \$50 per MWh threshold.

We analyze the market for the 16-hour daily on-peak power product because this is the most liquid market in the VACAR South region and it is where market power would be the most profitable. We also analyze the 16-hour on-peak average of the hourly PJM real-time market prices because it is the most liquid real-time market in the region. We compare these prices to the marginal cost of each generator. The daily output gap for each generator is expressed as the minimum hourly output gap level for each category over the course of the day. The results are the sum of the daily output gap of the included generation. Only units that are committed during the day are included in the daily calculation. Hydro and nuclear units are also excluded because nuclear resources rarely change output levels in response to market conditions for a variety of reasons and the opportunity costs associated with hydroelectric resources make it difficult to accurately estimate their costs.

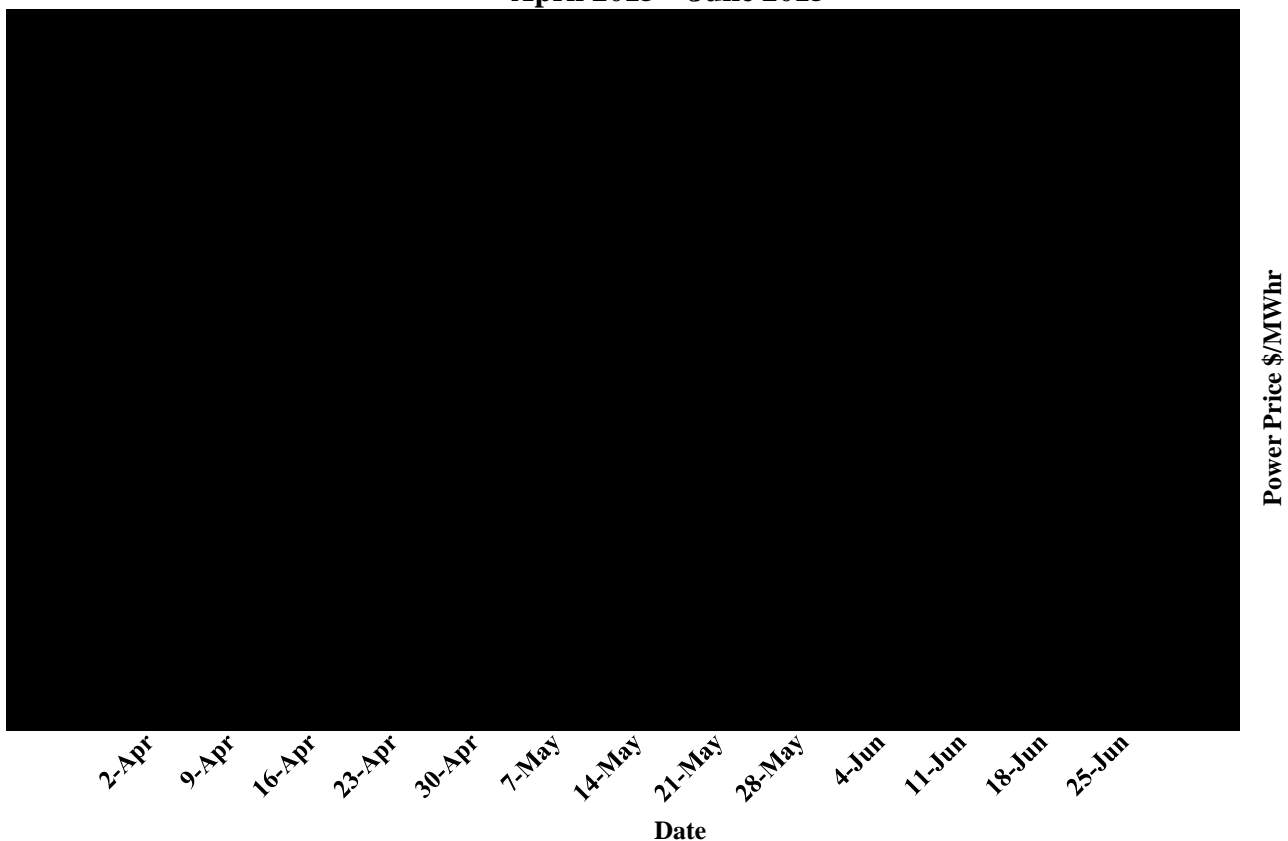
For this analysis, we define the market price as the minimum between the Platts published VACAR price and PJM real-time prices at the AEP hub. We chose this composite price to ensure that, if a portion of a unit's capacity were included in the output gap, both day-ahead and

Duke Monitoring Report: Second Quarter 2015

real-time prices were taken into consideration. Theoretically, dispatch should be driven by real-time prices, but the timing of natural gas nominations and the limited liquidity in the real-time markets cause the day-ahead market to also be important for dispatch. The minimum daily output gap is used in the analysis, because this represents the quantity of power that could have been sold profitably on a sixteen-hour on-peak block schedule without having to commit additional units.

As stated above, we analyze two sources of data that may be representative of prevailing power prices; the Platts VACAR index and the PJM market prices. The minimum of these two prices is used as a “composite” price for the \$25 threshold. If a threshold is exceeded using the composite price, it is exceeded for both the VACAR index and the PJM market prices.

**Figure 16: Output Gap
April 2015 – June 2015**



The composite thresholds were not exceeded this quarter. The \$50 threshold was exceeded once at the PJM price and the \$25 threshold was exceeded twice at the VACAR price and four times at the PJM price. The quantities were not large with the largest being [REDACTED] MW.

The incidences of output gap shown are mostly caused by the [REDACTED] [REDACTED] [REDACTED] facility. Of the [REDACTED] MW of rated capacity, only [REDACTED] MW is available to [REDACTED] through a PPA. [REDACTED] [REDACTED] The remaining contributions to the output gaps were too small to raise concerns.

3. Generator Availability

**Figure 17: Outage Quantities
April 2015 – June 2015**



Duke Monitoring Report: Second Quarter 2015

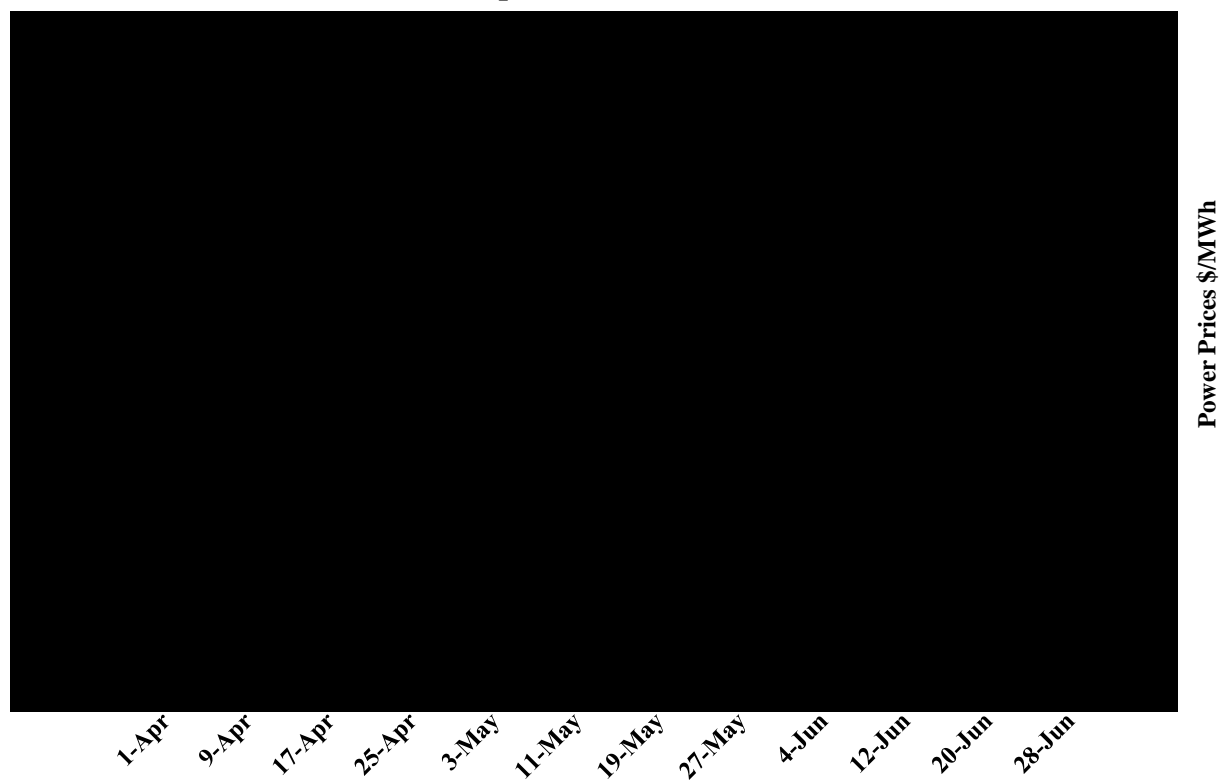
Our primary interest is in unplanned generation outages that cause increases in market prices. We reviewed the data for increases in forced outages coincident with increases in market prices and found potential concern on June 9 and June 23. We reviewed these days and found the following:

- The [REDACTED] was in a [REDACTED] day unscheduled outage starting on June [REDACTED] 2015 to repair a [REDACTED]
- The [REDACTED] was in a [REDACTED]-day unscheduled outage starting on June [REDACTED] to [REDACTED]
- The [REDACTED] MW [REDACTED] [REDACTED] [REDACTED] was in a [REDACTED]-day unscheduled outage starting on June [REDACTED] 2015 to repair [REDACTED]
- The [REDACTED] went into an unscheduled outage on [REDACTED] [REDACTED] June [REDACTED] 2015.

Our review of these generation outages found no evidence suggesting that they were not justified.

In some cases, the correlation between outages and prices is not immediately apparent. Therefore, we present statistics in Figure 18 to help clarify the relationship. The figure shows the average ratio of capacity in outage to total capacity (i.e., the average outage rate), the VACAR price and the Duke short-term sales price. This figure reveals patterns similar to Figure 17. The average planned outage rate was approximately ten percent and decreasing towards the end of the quarter. This pattern is consistent with the expected seasonal pattern of planned outages. The average unplanned outage rate was less than two percent. Relative to the Duke sales prices, this analysis does not reveal any additional concerns.

**Figure 18: Outage Rate
April 2015 – June 2015**



The correlations of the average outage rates to the VACAR price and the short-term sales price are shown in Figure 19.

**Figure 19: Correlation of Average Outage Rates with Wholesale Energy Prices
April 2015 – June 2015**

| | Correlation with VACAR Index | Correlation with Duke Real-Time Sales Prices |
|-------------------|---------------------------------|--|
| Planned Outages | -38% | -46% |
| Unplanned Outages | 22% | -13% |

Figure 19 shows both planned and unplanned outages. Planned outages are generally scheduled for off-peak periods when prices are lowest. Thus, the negative correlation of the planned outage rate with the VACAR index price and Duke real-time sales prices is expected. Unplanned outages are the most important outages from a market power perspective. The figure shows that

there was low correlation between the unplanned outage rate and both the VACAR index and Duke real-time sales prices. Therefore, we do not find evidence of anticompetitive conduct.

C. Analysis of Transmission Availability

Transmission outages are reviewed in order to determine whether they limit market access and, if so, whether the outages are justified. There were 456 transmission outages that were included in the AFC model builder process on elements rated 100 kV and higher during the period of study. We reviewed a subset of these outages with a focus on conditions that would have reduced transfer capability on the key flowgates when TSRs were refused or schedules were curtailed. We identified the following transmission outages as potentially relevant to the market based on how the outage affected the key flowgates discussed above (see Figure 8):

- [REDACTED] This [REDACTED] month outage commenced on March [REDACTED] and was taken to [REDACTED]. We note this outage due to the importance of the lines, even though it was not associated with TSR refusals during the study period.
- [REDACTED] This [REDACTED] was out of service on April [REDACTED] for [REDACTED] days to [REDACTED]. The outage affected flow on the [REDACTED], which contributed to a number of TSR refusals.
- [REDACTED] [REDACTED] was out of service on April [REDACTED] for [REDACTED] days to [REDACTED]. The outage affected flow on the '[REDACTED]', which contributed to a number of TSR refusals.
- [REDACTED]: This [REDACTED]-day outage commenced on May [REDACTED]. It was taken to [REDACTED]. The outage affected flow on the [REDACTED] which contributed to a number of TSR refusals.

Through our investigation of the outages and based on a review of documentation and logs, we find that these outages were reasonable and justified. Accordingly, our analysis of transmission availability did not indicate that Duke reduced market access through unjustified transmission outages.