

To the Public Utility Commission of Texas

# ERCOT Wholesale Electricity Market Monthly Report

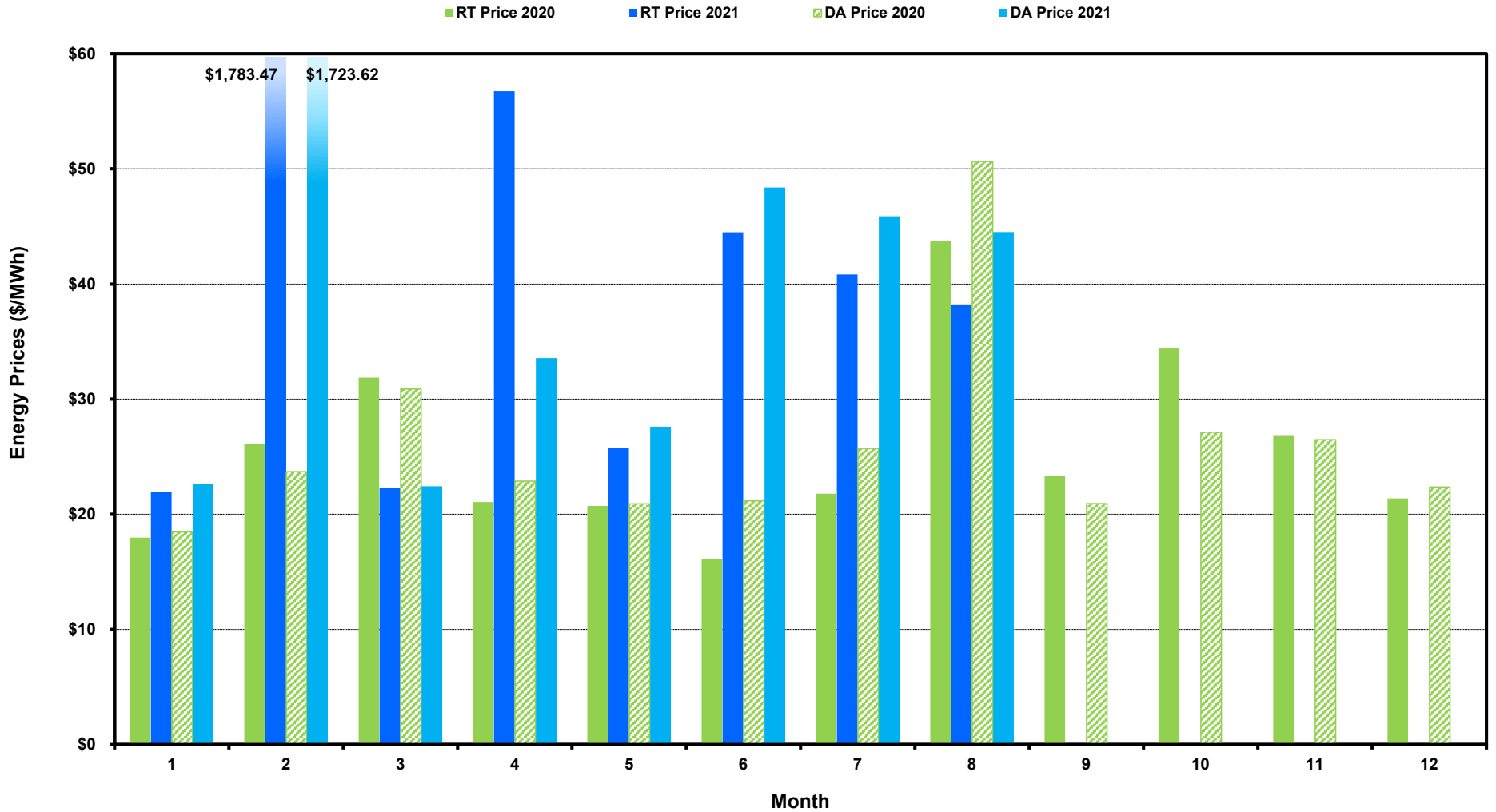
Friday, September 10, 2021

Potomac Economics, Ltd.  
Independent Market Monitor

<b>1</b>	<b>ERCOT-wide Average Energy Prices DA vs. RT</b>	<a href="#">chart</a>	<a href="#">table</a>
<b>2</b>	<b>Load Zone Load Statistics</b>	<a href="#">chart</a>	<a href="#">table</a>
<b>3</b>	<b>Load Zone Monthly Average Energy Prices DA vs RT</b>	<a href="#">chart</a>	<a href="#">table</a>
<b>4</b>	<b>ERCOT-wide Monthly Implied Heat Rates DA vs RT</b>	<a href="#">chart</a>	<a href="#">table</a>
<b>5</b>	<b>Load Zone Monthly Implied Heat Rates DA vs RT</b>	<a href="#">chart</a>	<a href="#">table</a>
<b>6</b>	<b>Daily ORDC Reserve Adder Avg. Value and Duration</b>	<a href="#">chart</a>	<a href="#">table</a>
<b>7</b>	<b>Monthly Ancillary Services Required MW</b>	<a href="#">chart</a>	<a href="#">table</a>
<b>8</b>	<b>Hourly Average of Ancillary Services Required MW</b>	<a href="#">chart</a>	<a href="#">table</a>
<b>9</b>	<b>Monthly Average Ancillary Services Price</b>	<a href="#">chart</a>	<a href="#">table</a>
<b>10</b>	<b>Monthly Average A/S Cost per MWh Load</b>	<a href="#">chart</a>	<a href="#">table</a>
<b>11</b>	<b>Ercot-wide Cumulative Peaker Net Margin</b>	<a href="#">chart</a>	<a href="#">table</a>
<b>12</b>	<b>DA vs. RT Load Forecast Error by Hour Ending</b>	<a href="#">chart</a>	<a href="#">table</a>
<b>13</b>	<b>Monthly Average of Wind Generation by Hour Ending</b>	<a href="#">chart</a>	<a href="#">table</a>
<b>14</b>	<b>RT Constraint Rankings</b>		<a href="#">table</a>
	- Top 10 Constraints by Total Congestion Value	<a href="#">chart</a>	
	- Top 10 Constraints by Binding Frequency	<a href="#">chart</a>	
<b>15</b>	<b>DA Constraint Rankings</b>		<a href="#">table</a>
	- Top 10 Constraints by Total Congestion Value	<a href="#">chart</a>	
	- Top 10 Constraints by Binding Frequency	<a href="#">chart</a>	
<b>16</b>	<b>CRR Pairs by Monthly Auction Value Rankings</b>		<a href="#">table</a>
	- Top 10 PTP Obligations by Total Transaction Value	<a href="#">chart</a>	
	- Top 10 PTP Options by Total Transaction Value	<a href="#">chart</a>	

# ERCOT-wide Average Energy Prices DA vs RT

(avg. DA & RT SPPs weighted by Real Time Settlement Loads)



[Home <<](#)

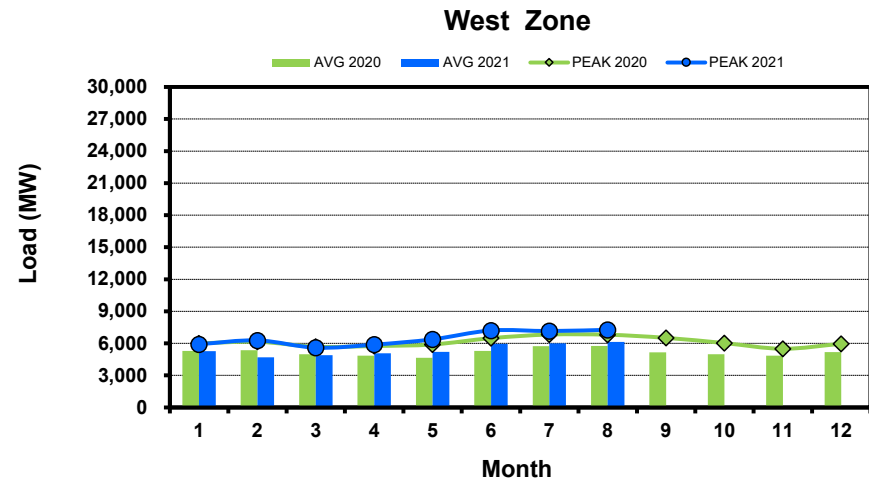
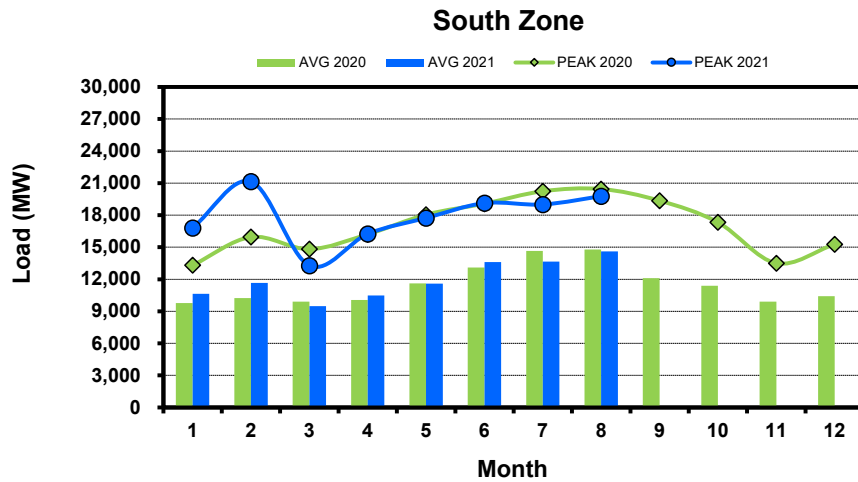
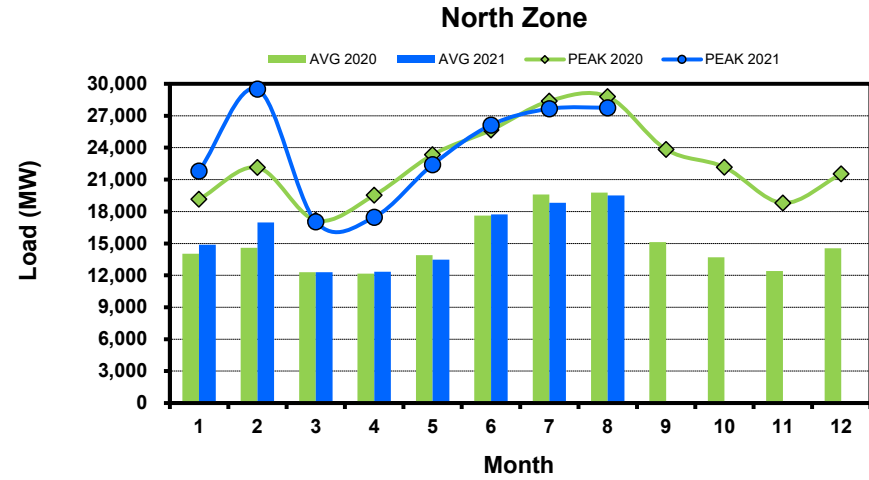
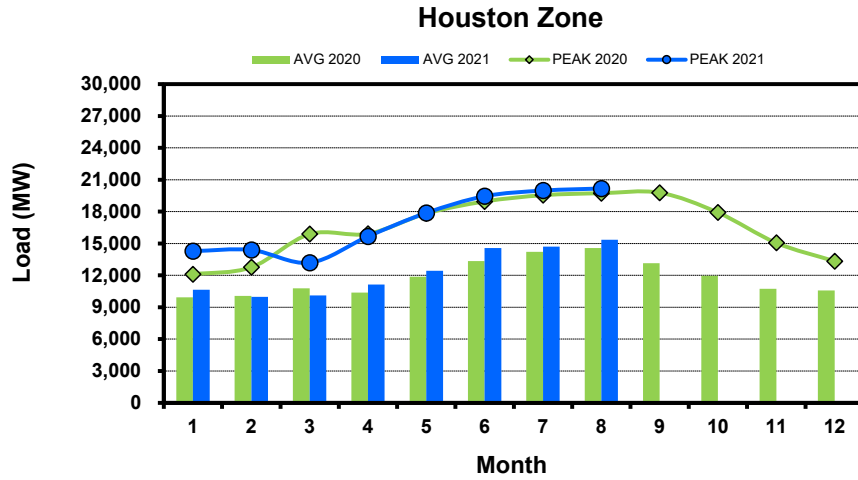
[previous <<](#)

[next >>](#)

[data](#)

# Load Zone Load Statistics

(Nodal load zone made comparable to zonal system Load Zone definitions\*)



[Home <<](#)

[previous <<](#)

[next >>](#)

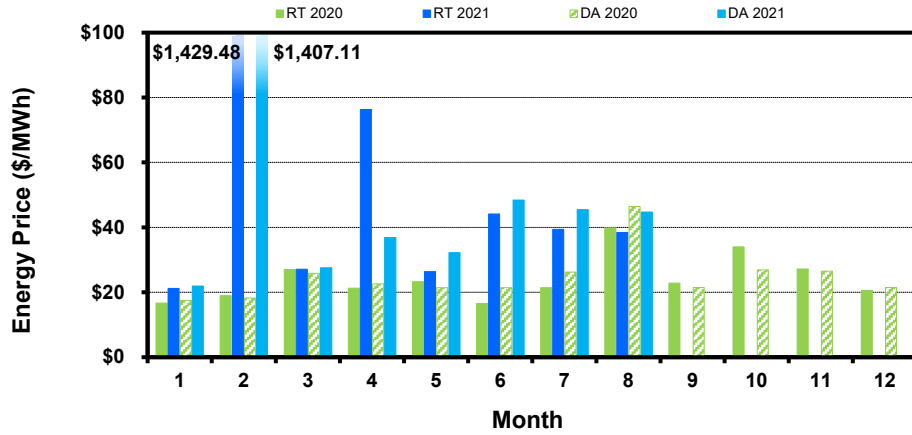
[data](#)

**Note:** \* Zonal load zone definition vs. Nodal comparable load zone definition: LZ\_Houston=LZ\_Houston; LZ\_West=LZ\_West; LZ\_North=(LZ\_North,LZ\_RAYBN); LZ\_South=(LZ\_South,LZ\_CPS,LZ\_AEN,LZ\_LCRA)

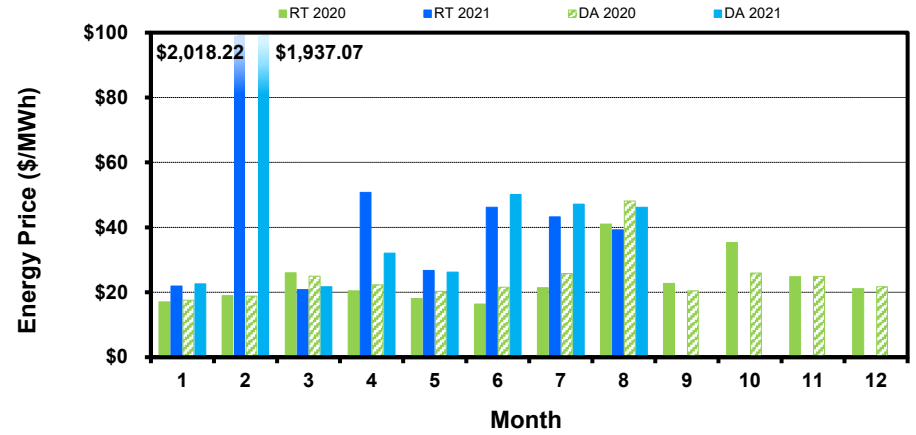
# Load Zone Monthly Average Energy Price DA vs RT

(avg. DA & RT SPPs weighted by Real Time Settlement Loads)  
 (Nodal load zone made comparable to zonal system Load Zone definitions\*)

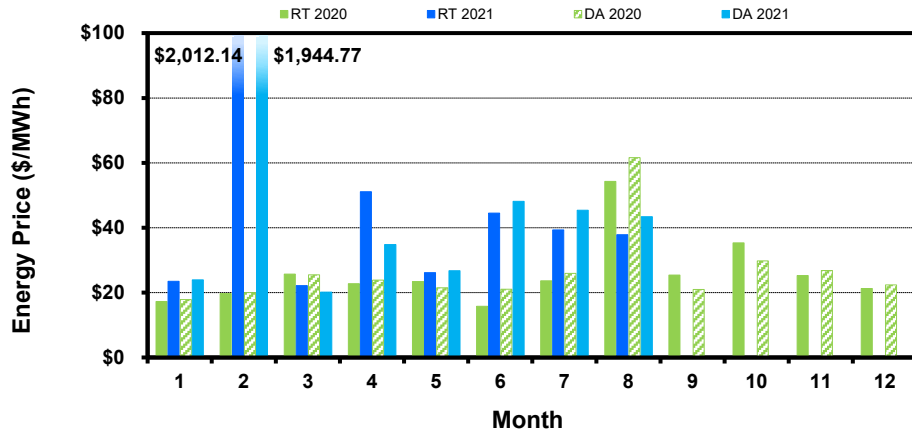
### Houston Zone



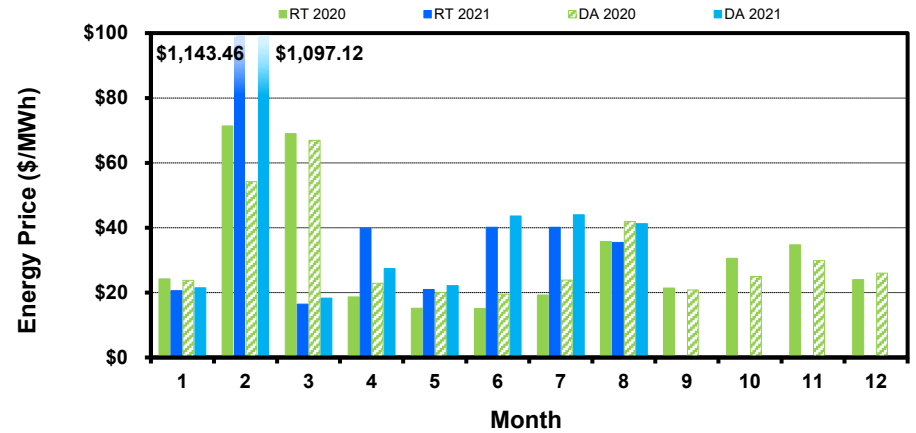
### North Zone



### South Zone



### West Zone



[Home <<](#)

[previous <<](#)

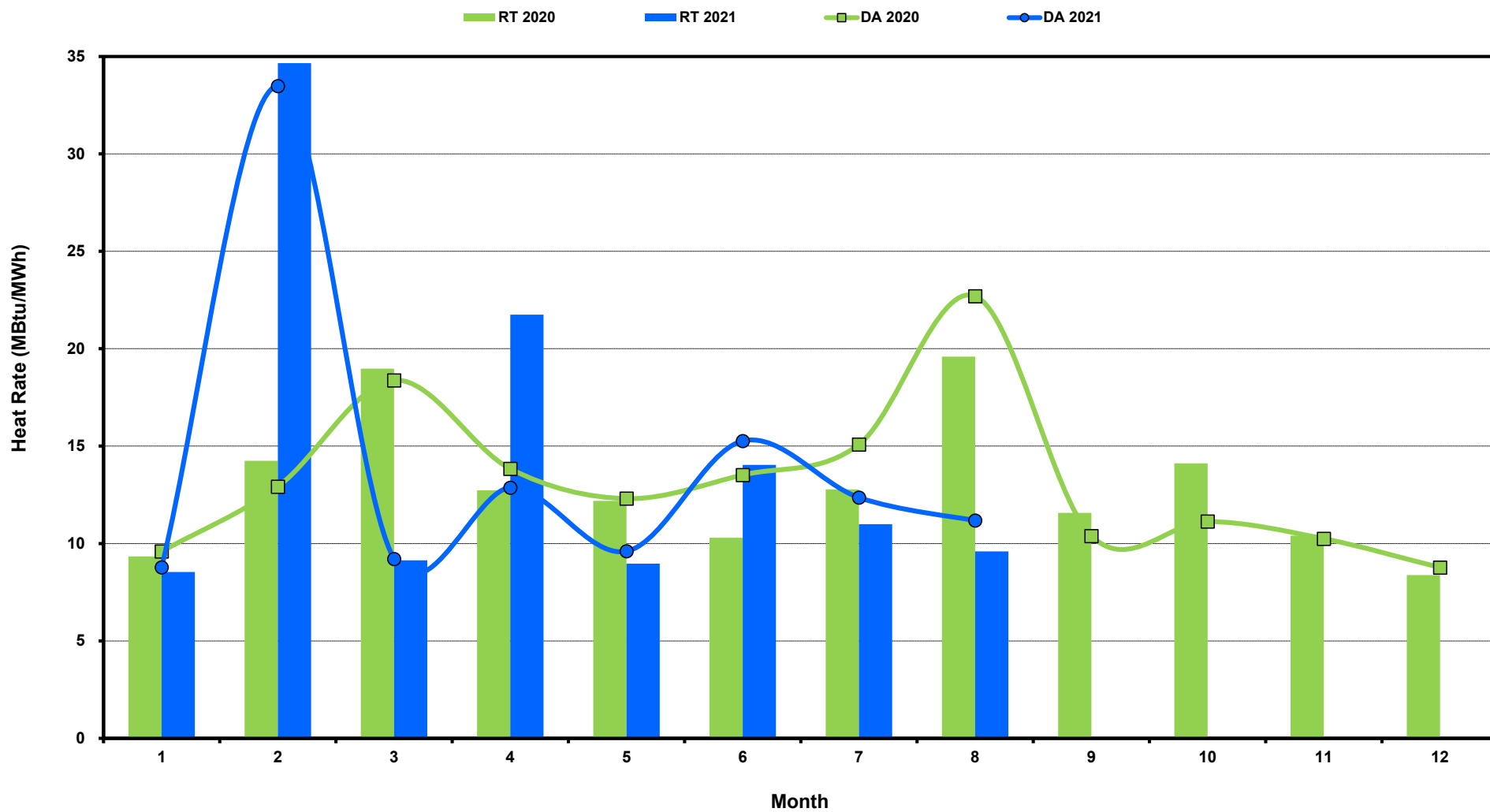
[next >>](#)

[data](#)

**Note:** \* Zonal load zone definition vs. Nodal comparable load zone definition: LZ\_Houston=LZ\_Houston; LZ\_West=LZ\_West; LZ\_North=(LZ\_North,LZ\_RAYBN); LZ\_South=(LZ\_South,LZ\_CPS,LZ\_AEN,LZ\_LCRA)

# ERCOT-wide Monthly Implied Heat Rate DA vs RT

(avg. heat rates weighted by Real Time Settlement Loads)



[Home <<](#)

[previous <<](#)

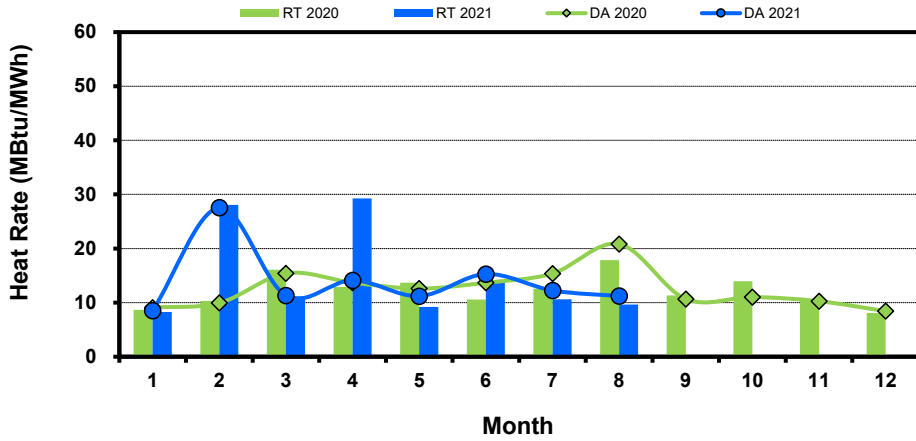
[next >>](#)

[data](#)

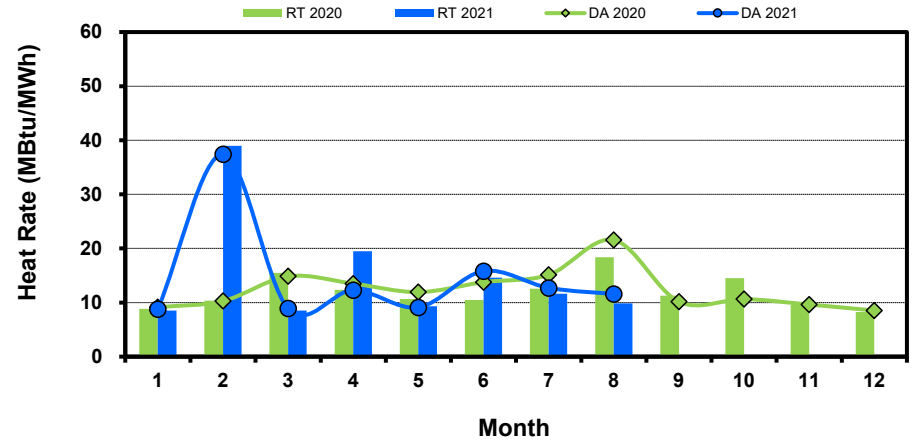
# Load Zone Monthly Implied Heat Rate DA vs RT

(avg. heat rates weighted by Real Time Settlement Loads)  
 (Nodal load zone made comparable to zonal system Load Zone definitions\*)

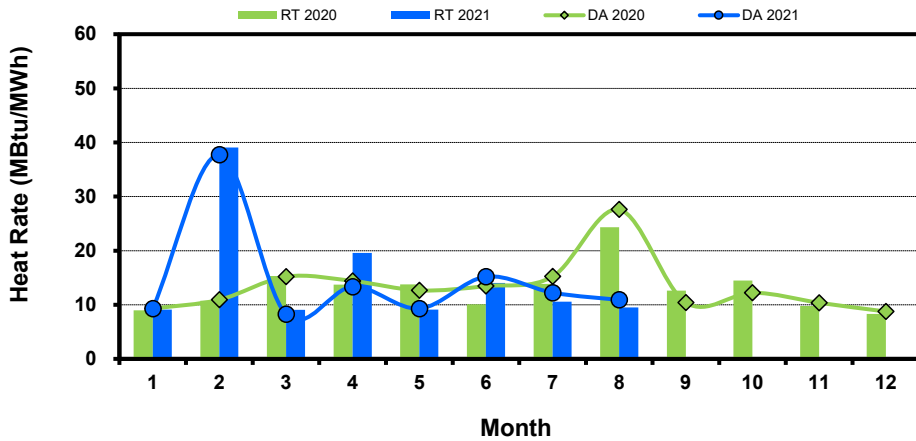
### Houston Zone



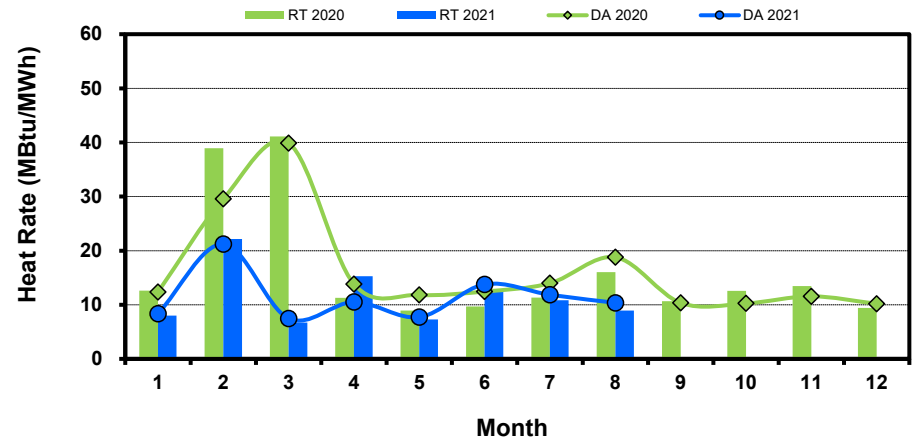
### North Zone



### South Zone



### West Zone



[Home <<](#)

[previous <<](#)

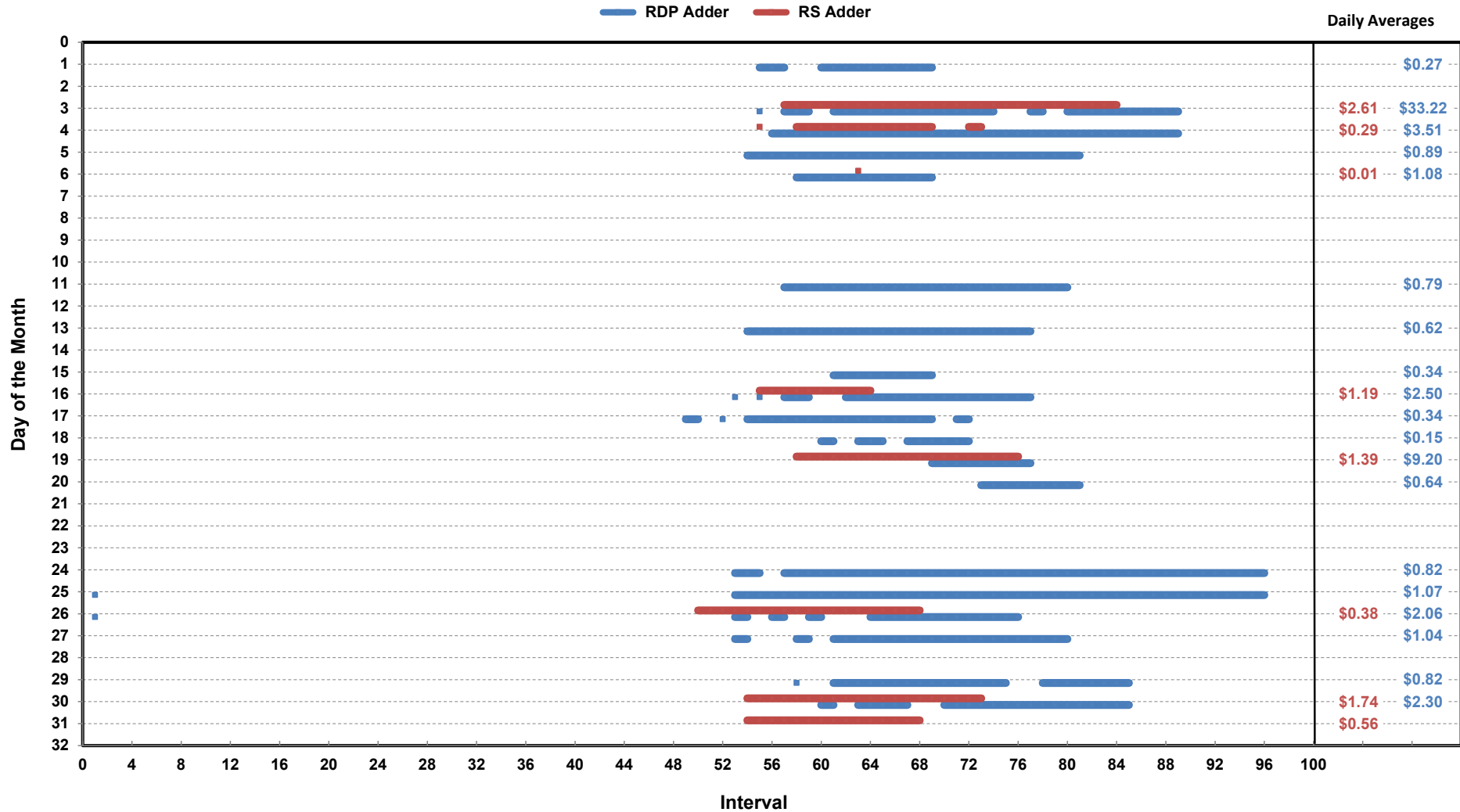
[next >>](#)

[data](#)

**Note:** \* Zonal load zone definition vs. Nodal comparable load zone definition: LZ\_Houston=LZ\_Houston; LZ\_West=LZ\_West; LZ\_North=(LZ\_North,LZ\_RAYBN); LZ\_South=(LZ\_South,LZ\_CPS,LZ\_AEN,LZ\_LCRA)

# Daily ORDC Adders Average Values and Interval Duration

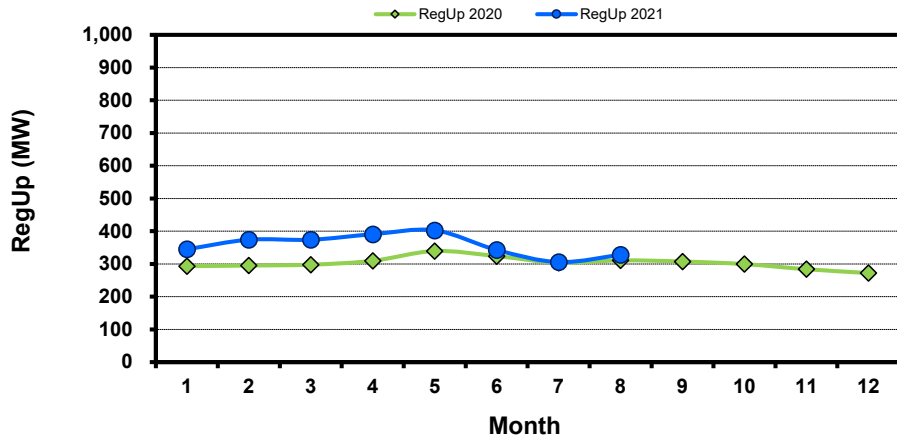
## Aug-2021



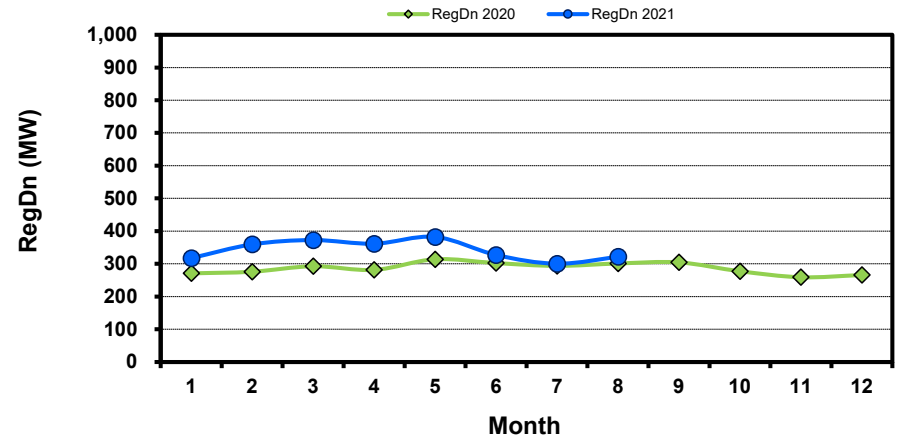
[Home <<](#)
[previous <<](#)
[next >>](#)  
[data](#)

# Monthly Average of Ancillary Services Required MW

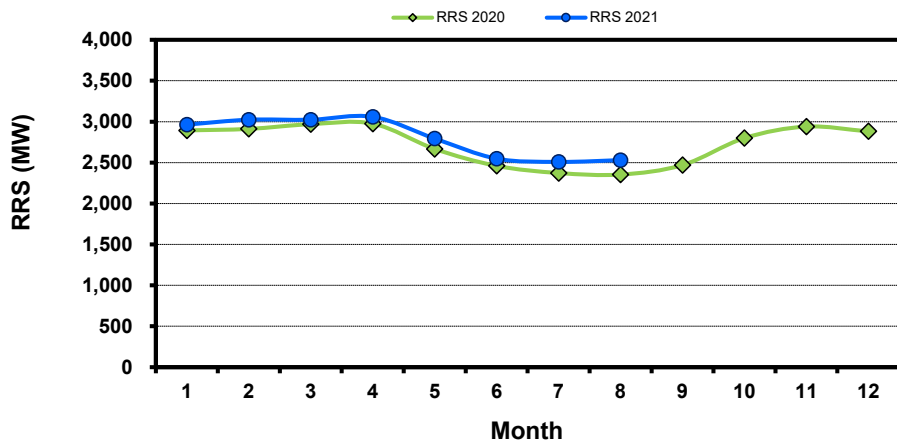
## Regulation Up



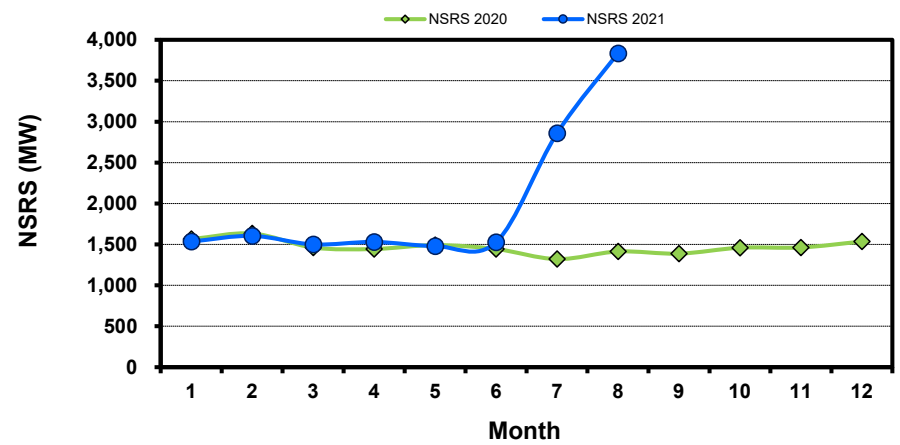
## Regulation Down



## Responsive Reserve



## Non-Spin Reserve



[Home <<](#)

[previous <<](#)

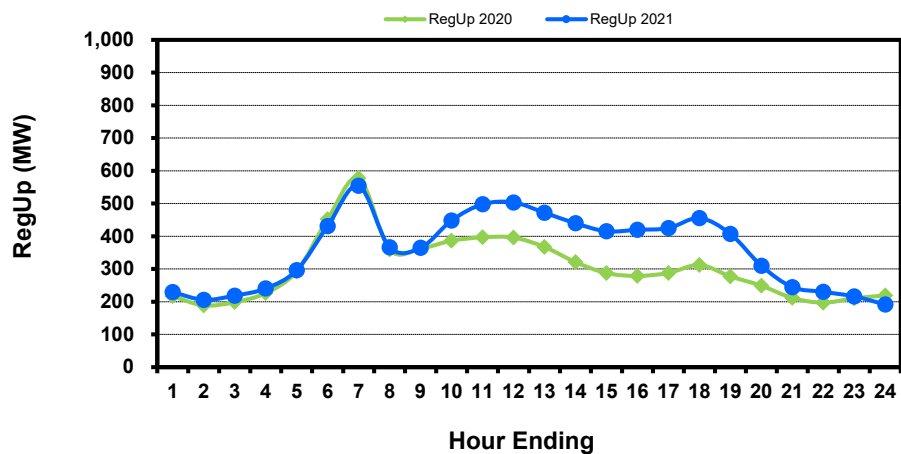
[next >>](#)

[data](#)

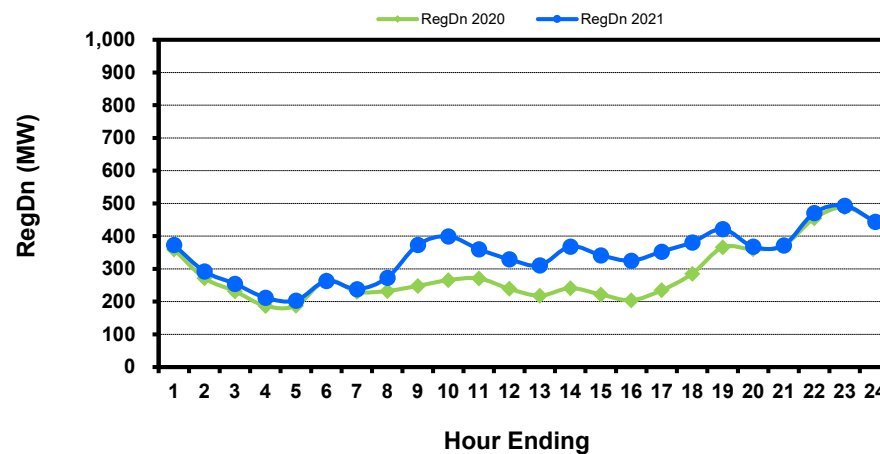


# Hourly Average of Ancillary Services Required MW

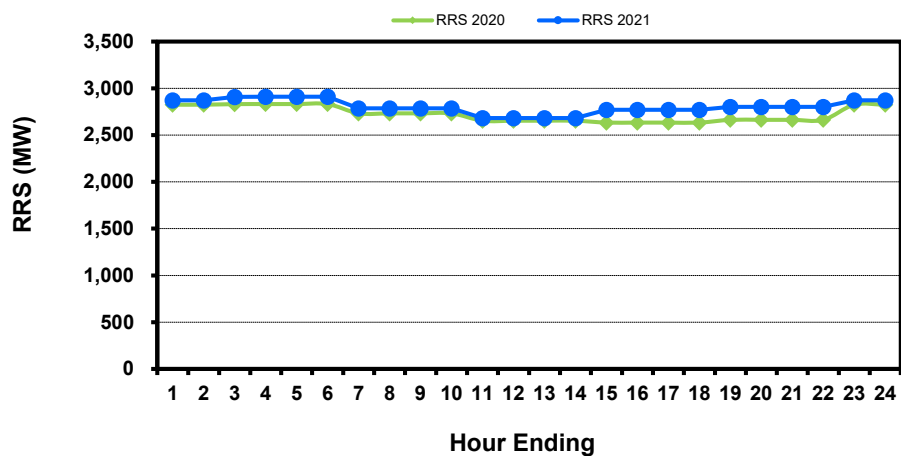
## Regulation Up



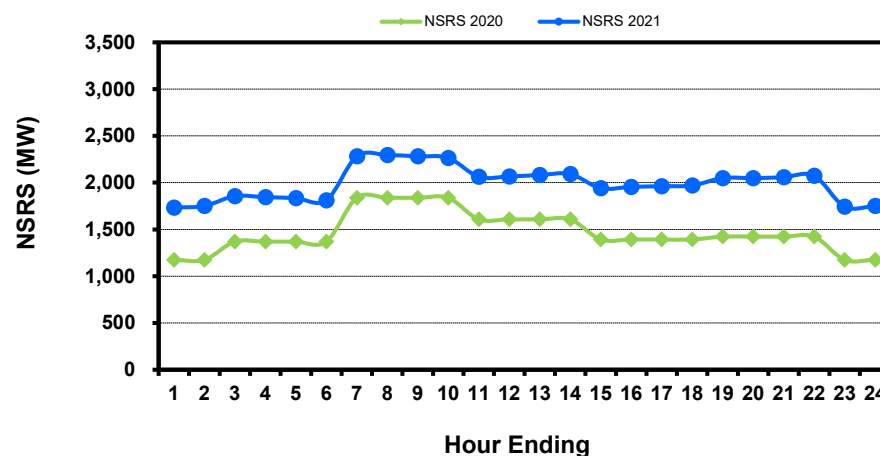
## Regulation Down



## Responsive Reserve



## Non-Spin Reserve



[Home <<](#)

[previous <<](#)

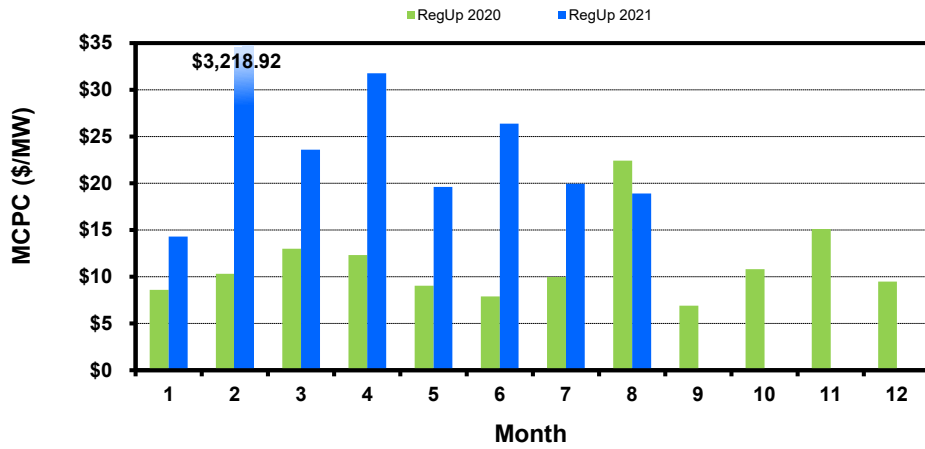
[next >>](#)

[data](#)

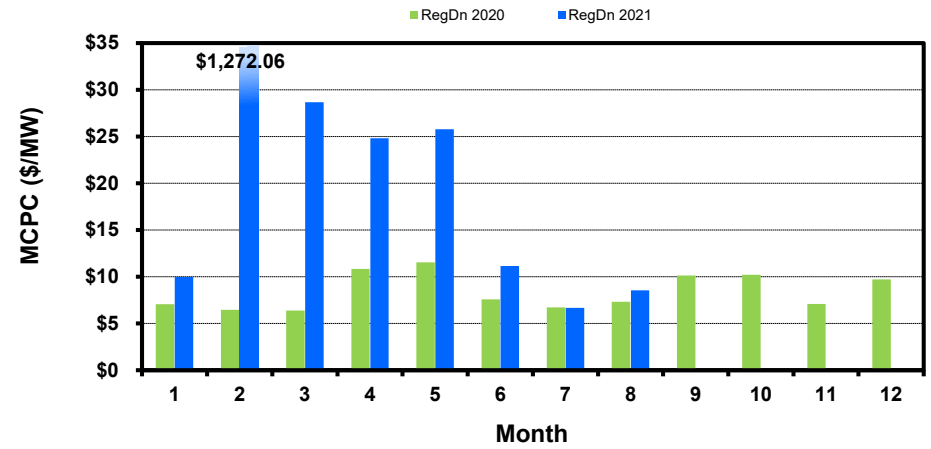
# Monthly Average Ancillary Services Price

(weighted by A/S Quantities Required)

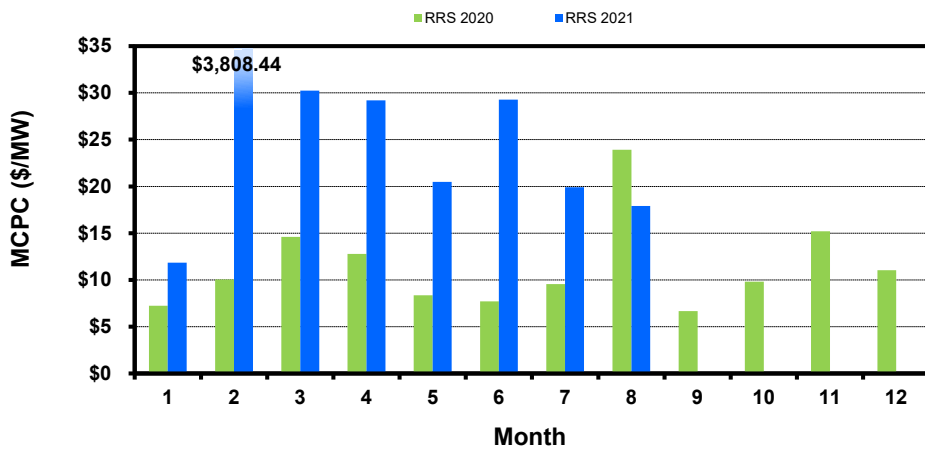
### Regulation Up



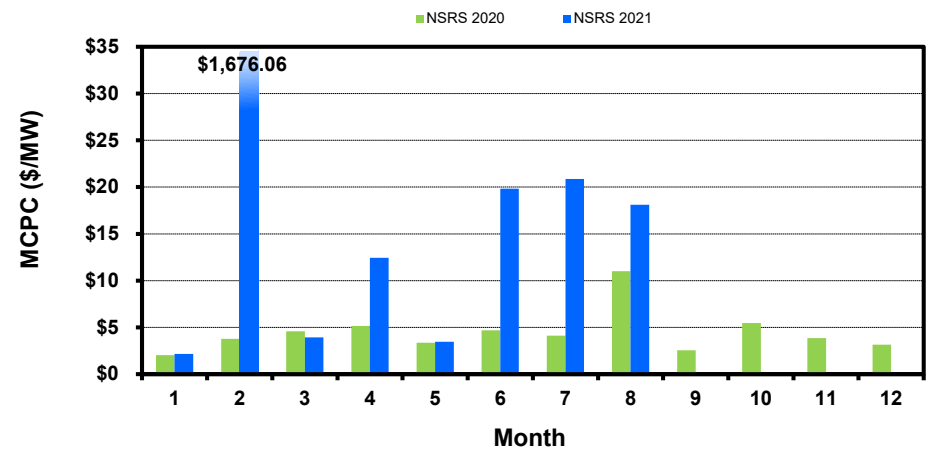
### Regulation Down



### Responsive Reserve



### Non-Spin Reserve



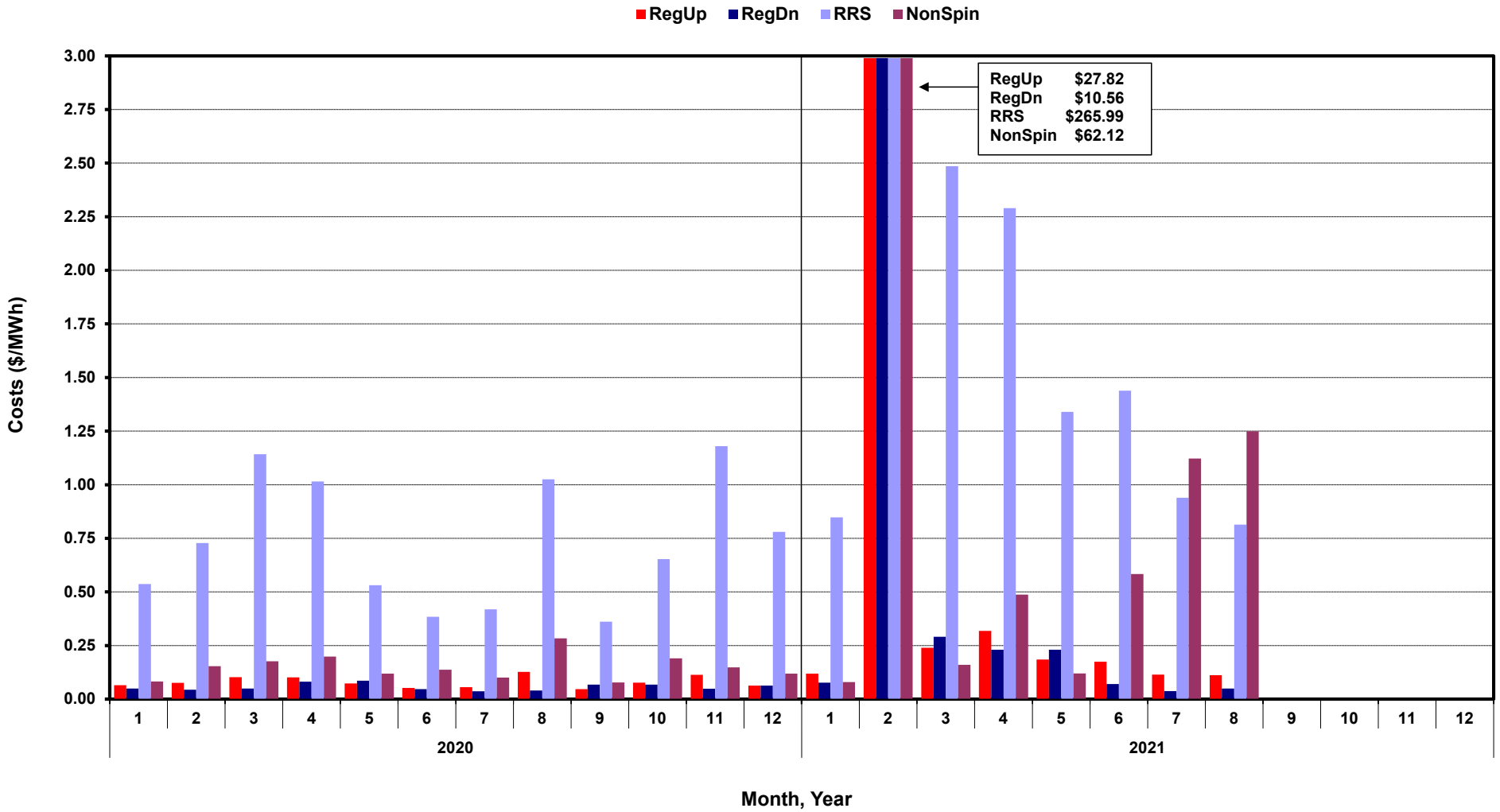
[Home <<](#)

[previous <<](#)

[next >>](#)

[data](#)

# Monthly Average A/S Cost per MWh Load



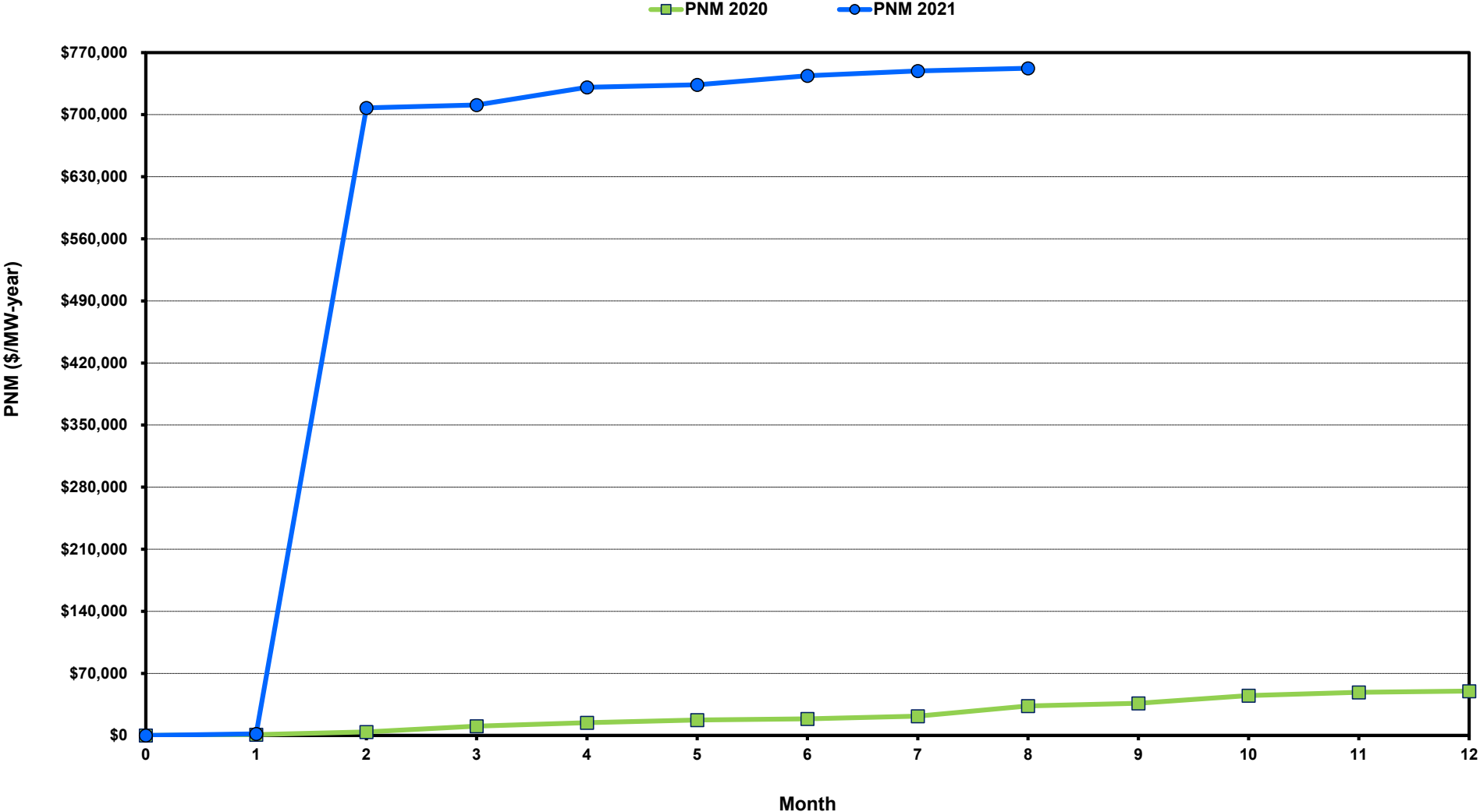
[Home <<](#)

[previous <<](#)

[next >>](#)

[data](#)

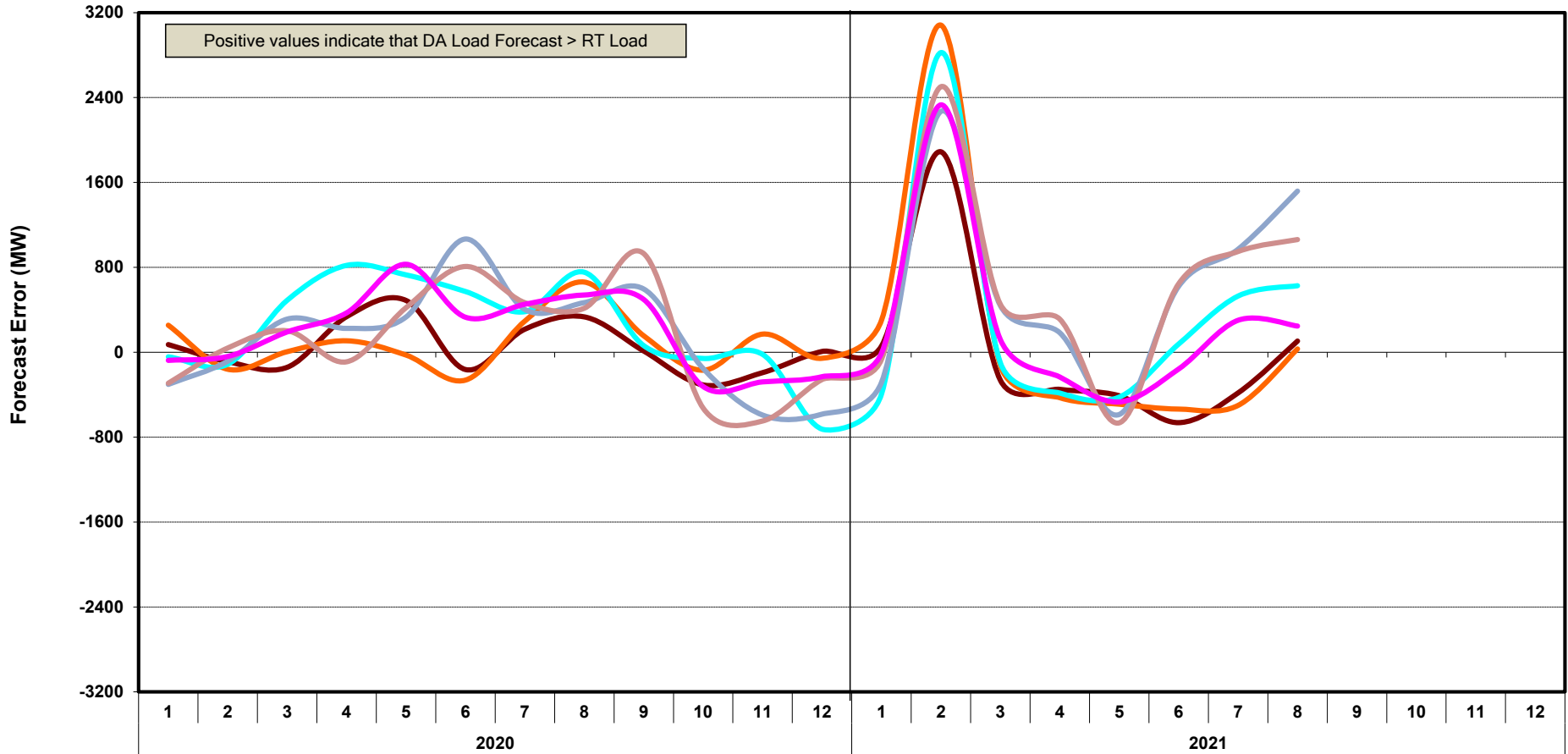
# ERCOT-wide Cumulative Peaker Net Margin



[Home <<](#)      [previous <<](#)      [next >>](#)  
[data](#)

# DA vs. RT Load Forecast Error by Hour Ending

HE\_1\_4   HE\_5\_8   HE\_9\_12   HE\_13\_16   HE\_17\_20   HE\_21\_24



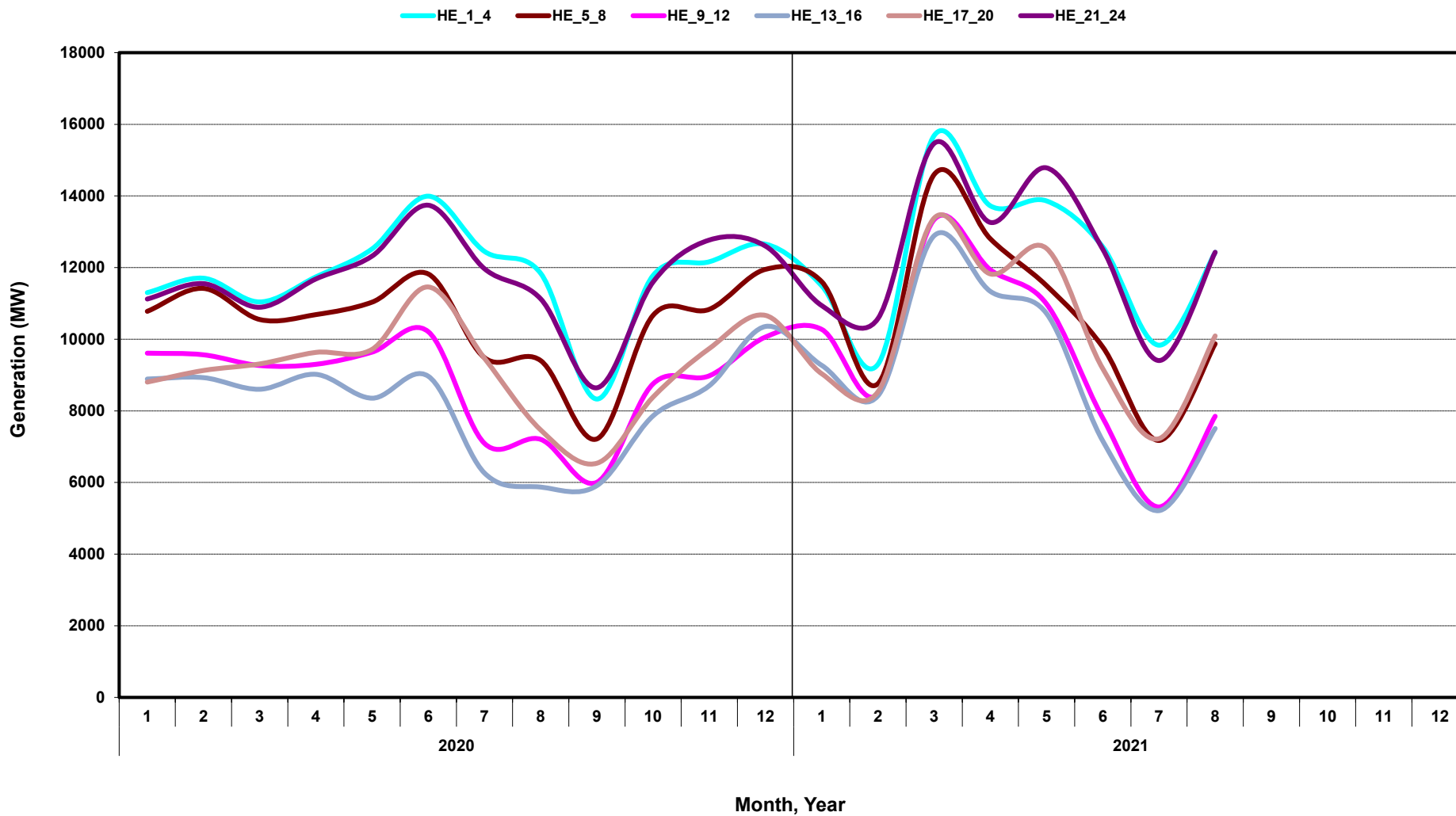
[Home <<](#)

[previous <<](#)

[next >>](#)

[data](#)

# Monthly Average of Wind Generation by Hour Ending



[Home <<](#)

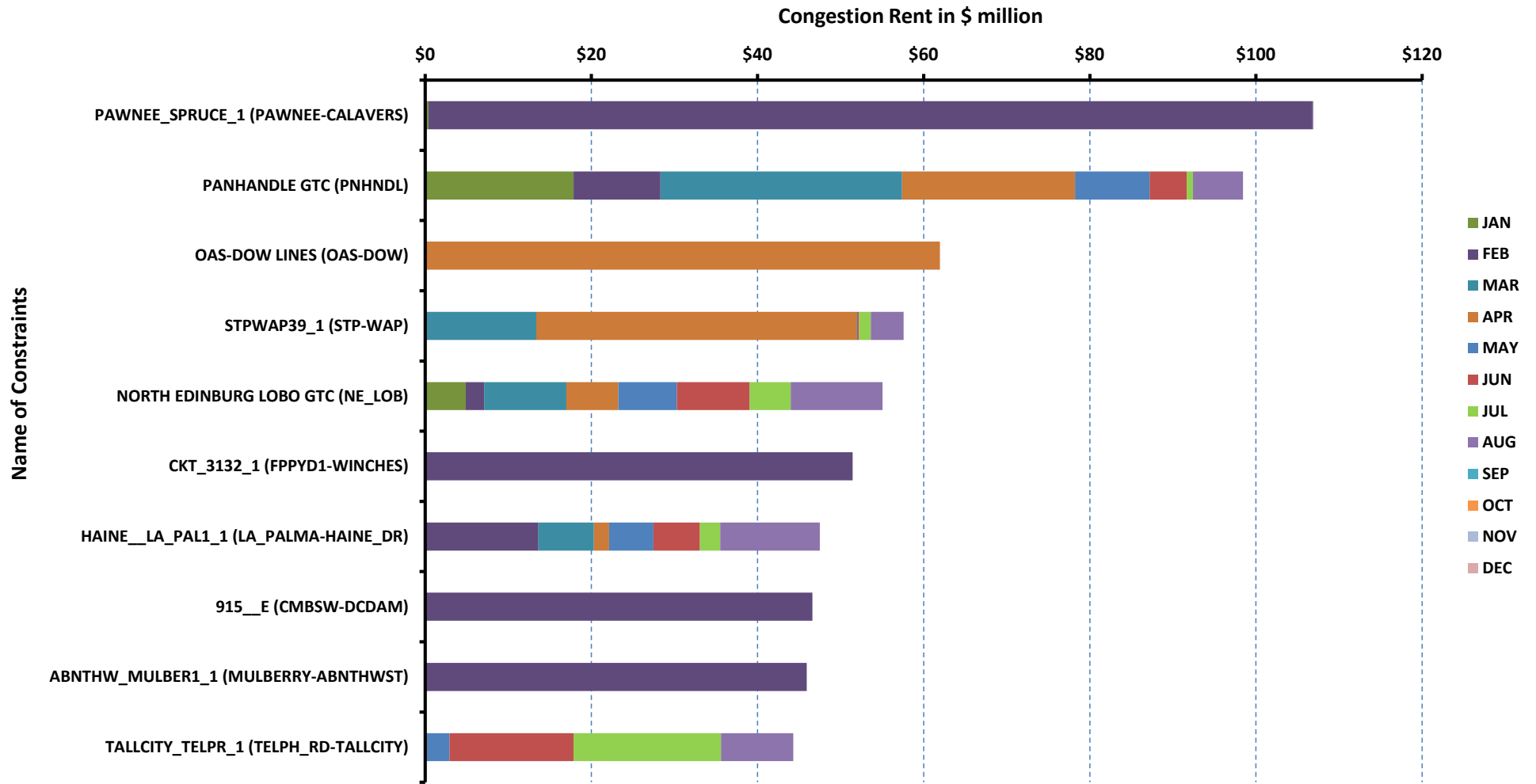
[previous <<](#)

[next >>](#)

[data](#)

# RT Congestion Constraint Rankings - 1

## Top 10 Constraints by Total Congestion Value - 2021



[Home <<](#)

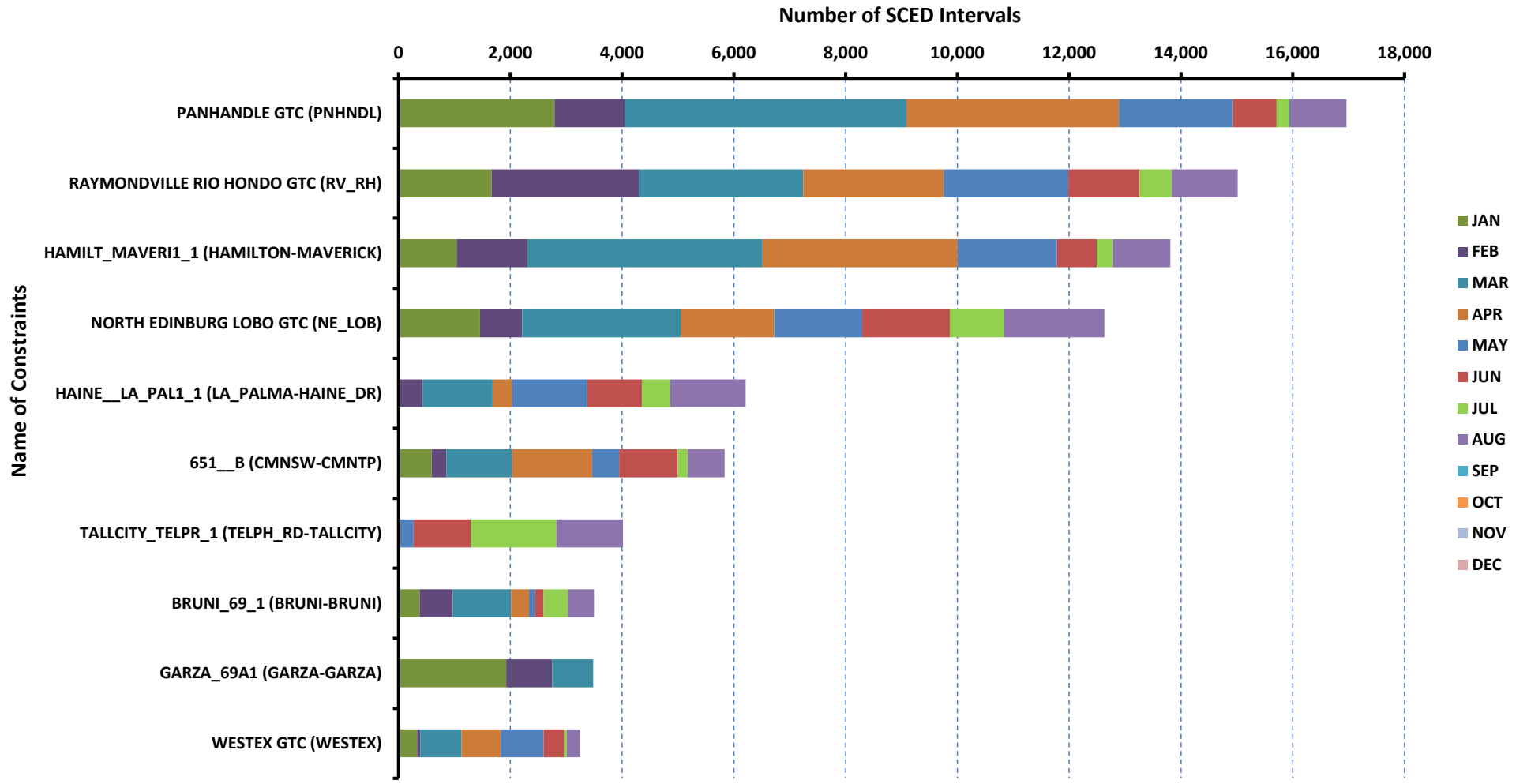
[previous <<](#)

[next >>](#)

[data](#)

# RT Congestion Constraint Rankings - 2

## Top 10 Constraints by Binding Frequency - 2021



[Home <<](#)

[previous <<](#)

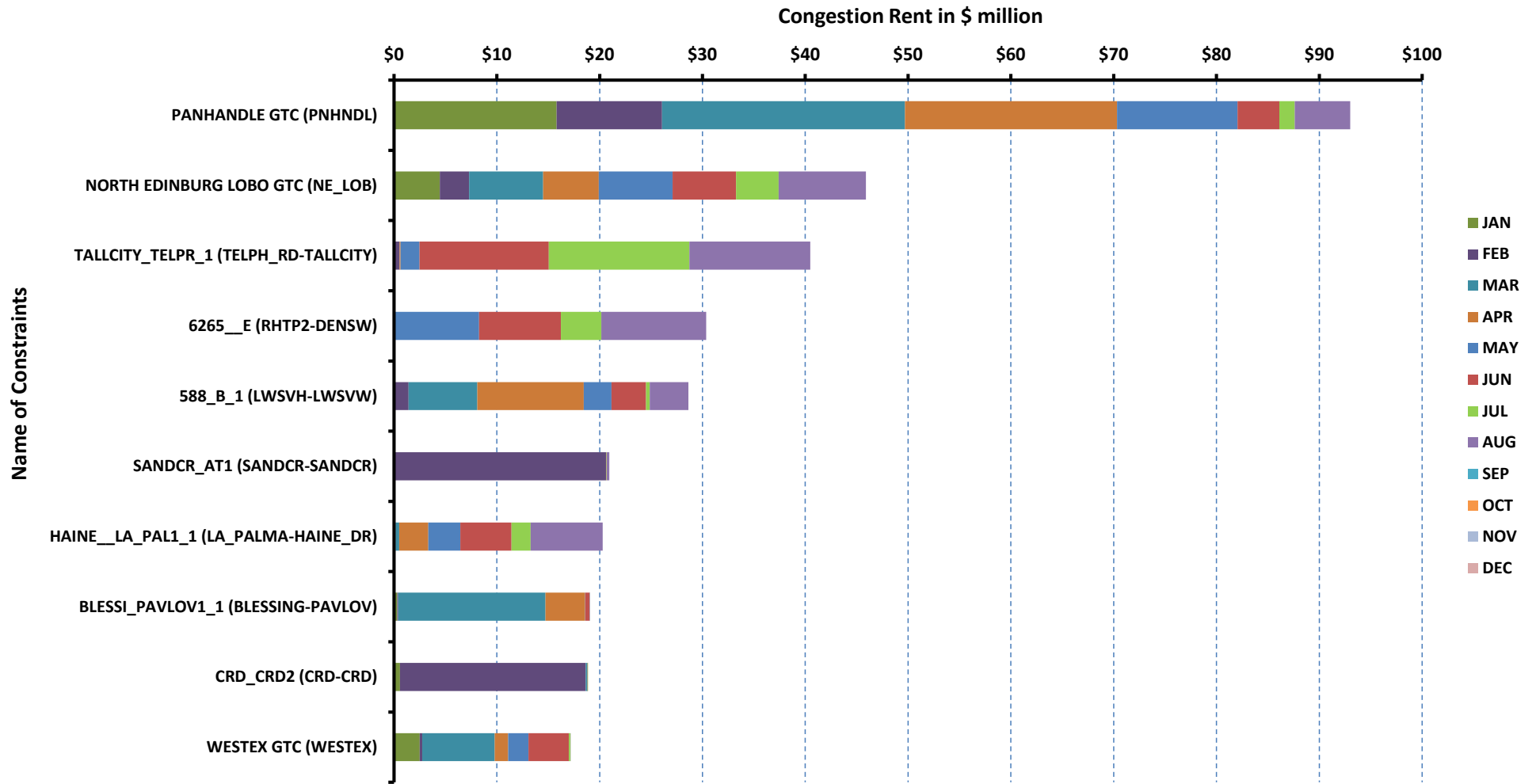
[next >>](#)

[data](#)



# DA Congestion Constraint Rankings - 1

## Top 10 Constraints by Total Congestion Value - 2021



[Home <<](#)

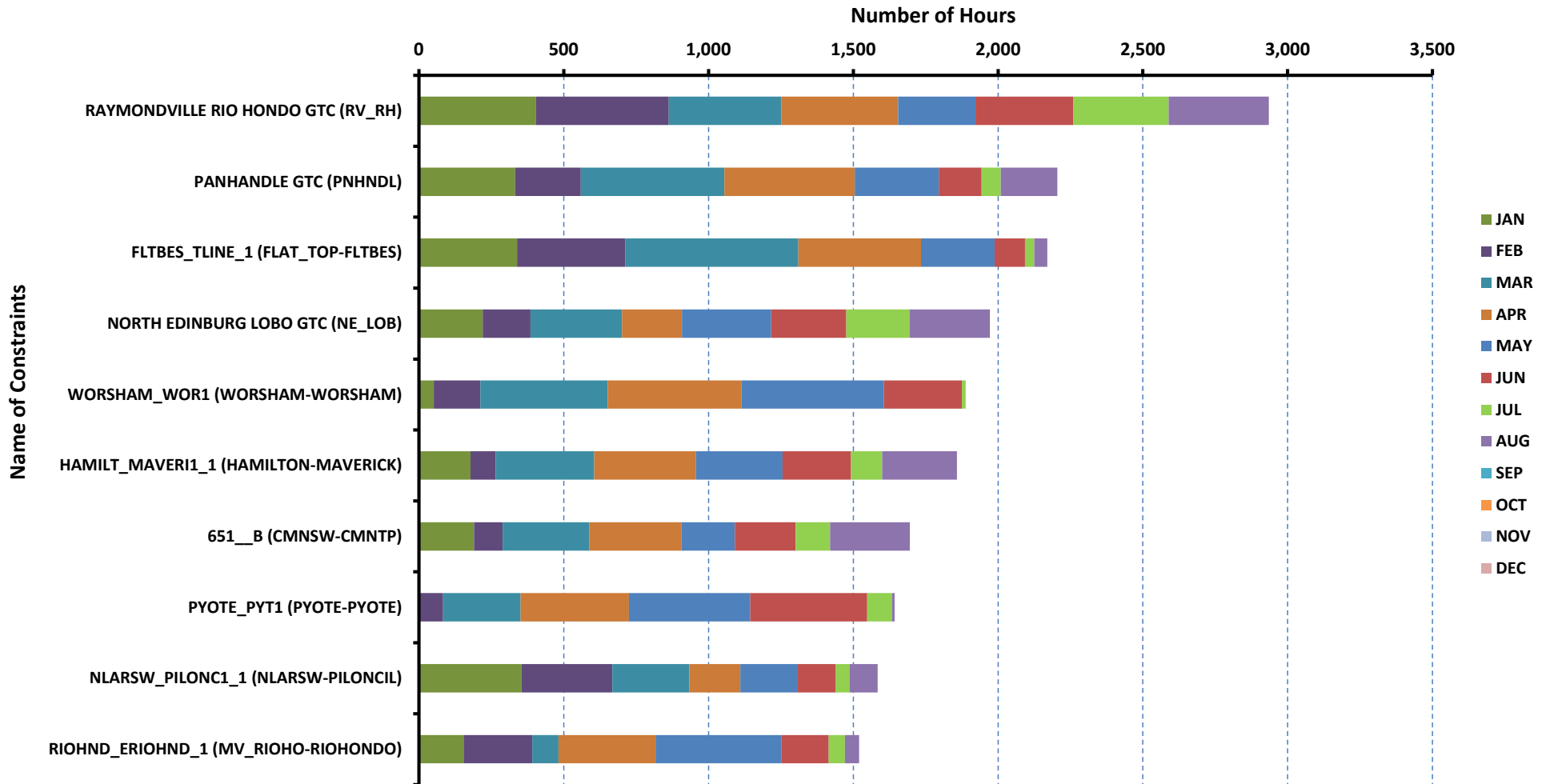
[previous <<](#)

[next >>](#)

[data](#)

# DA Congestion Constraint Rankings - 2

## Top 10 Constraints by Binding Frequency - 2021



[Home <<](#)

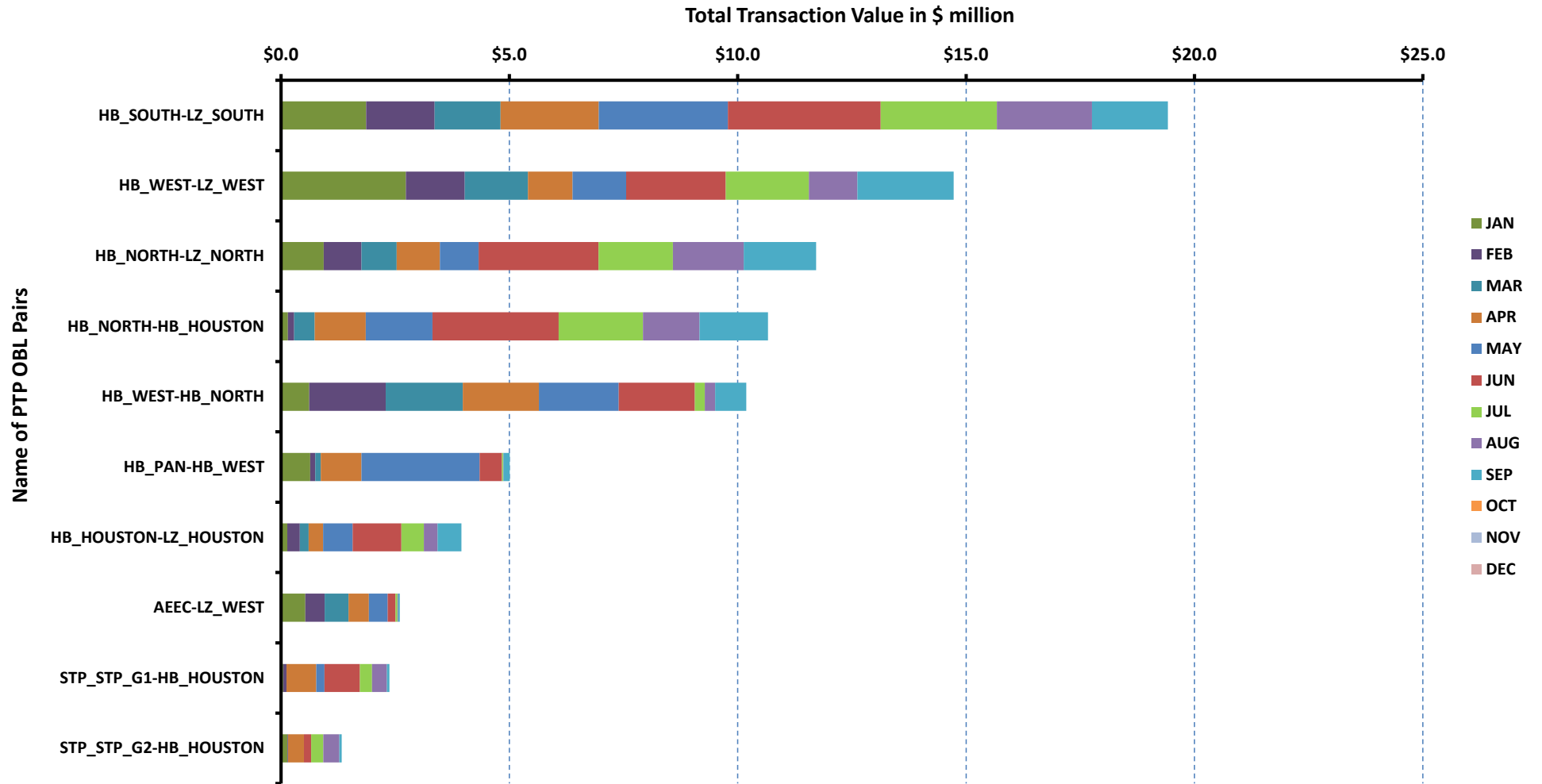
[previous <<](#)

[next >>](#)

[data](#)

# Top 10 CRR Pairs Ranked by Monthly Auction Values - 1

## Top 10 PTP Obligations by Total Transaction Value - 2021



[Home <<](#)

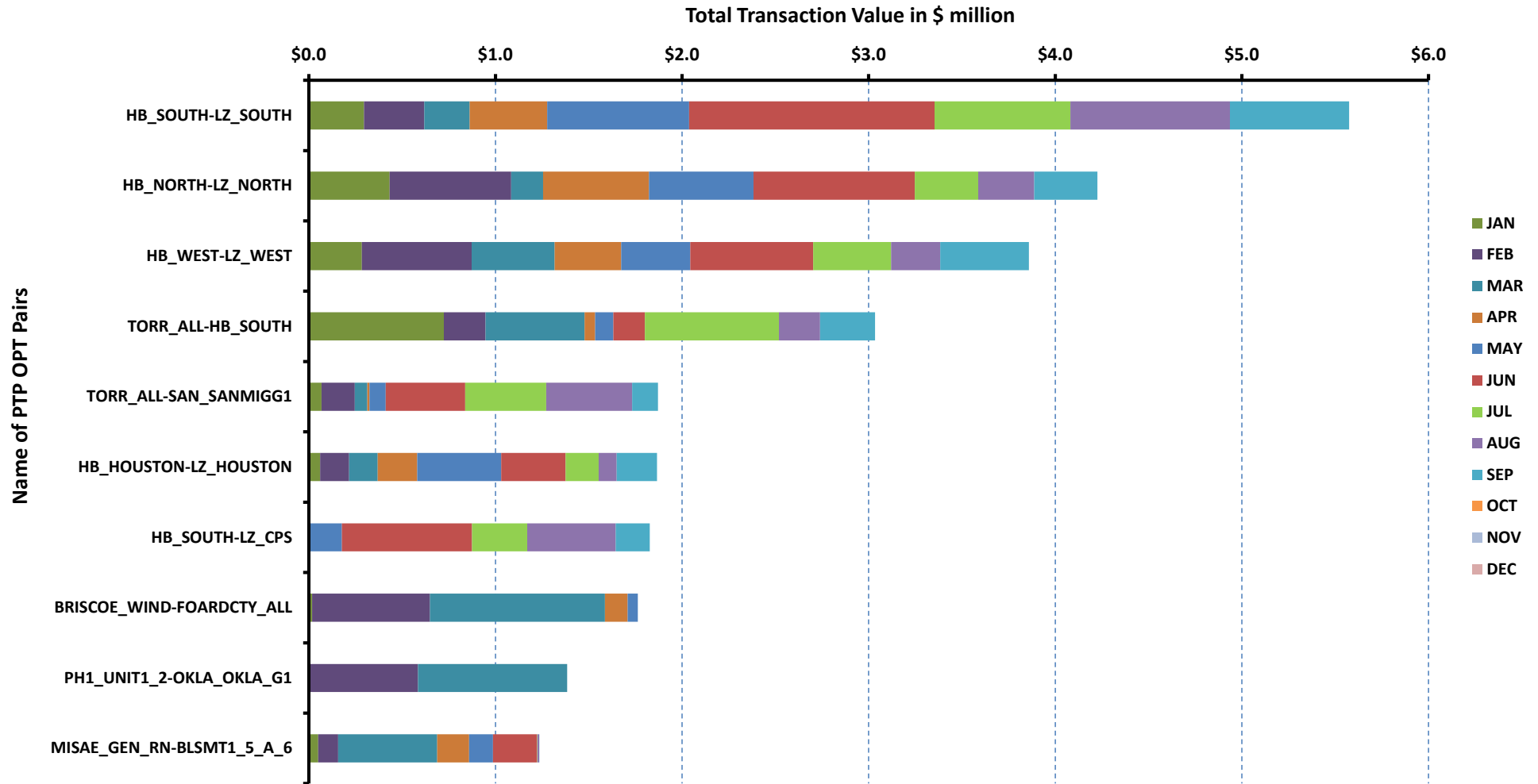
[previous <<](#)

[next >>](#)

[data](#)

# Top 10 CRR Pairs Ranked by Monthly Auction Values - 2

## Top 10 PTP Options by Total Transaction Value - 2021



[Home <<](#)

[previous <<](#)

[next >>](#)

[data](#)

ERCOT-wide Avg. Energy Price - DA vs. RT			
year	month	dam_spp	rtm_spp
2020	1	\$ 18.46	\$ 17.97
	2	\$ 23.69	\$ 26.12
	3	\$ 30.87	\$ 31.87
	4	\$ 22.89	\$ 21.06
	5	\$ 20.92	\$ 20.72
	6	\$ 21.18	\$ 16.13
	7	\$ 25.72	\$ 21.79
	8	\$ 50.64	\$ 43.72
	9	\$ 20.93	\$ 23.32
	10	\$ 27.12	\$ 34.39
	11	\$ 26.47	\$ 26.86
	12	\$ 22.37	\$ 21.38
2021	1	\$ 22.60	\$ 21.96
	2	\$ 1,723.84	\$ 1,784.27
	3	\$ 22.50	\$ 22.33
	4	\$ 33.56	\$ 56.74
	5	\$ 27.60	\$ 25.76
	6	\$ 48.37	\$ 44.48
	7	\$ 45.88	\$ 40.82
	8	\$ 44.50	\$ 38.22
	9	\$ -	\$ -
	10	\$ -	\$ -
	11	\$ -	\$ -
	12	\$ -	\$ -

[Home <<](#)

[previous <<](#)

[next >>](#)

[chart](#)

Load Zone Load Statistics											
year	month	loadPEAK_Houston	loadPEAK_North	loadPEAK_South	loadPEAK_West	loadAVG_Houston	loadAVG_North	loadAVG_South	loadAVG_West		
2020	1	12,102	19,145	13,311	5,996	9,945	14,023	9,781	5,288		
	2	12,763	22,127	15,953	6,150	10,077	14,586	10,236	5,351		
	3	15,886	17,173	14,820	5,684	10,786	12,298	9,908	4,982		
	4	15,909	19,521	16,210	5,750	10,385	12,167	10,063	4,840		
	5	17,827	23,337	18,047	5,895	11,875	13,891	11,624	4,655		
	6	18,953	25,649	19,077	6,485	13,351	17,610	13,092	5,293		
	7	19,545	28,378	20,240	6,826	14,207	19,609	14,644	5,736		
	8	19,732	28,793	20,448	6,809	14,569	19,780	14,786	5,765		
	9	19,778	23,832	19,355	6,516	13,144	15,129	12,102	5,164		
	10	17,911	22,168	17,330	6,027	11,965	13,695	11,390	4,976		
	11	15,058	18,800	13,503	5,495	10,743	12,411	9,901	4,860		
	12	13,333	21,525	15,283	5,961	10,584	14,545	10,421	5,191		
2021	1	14,285	21,804	16,813	5,924	10,650	14,885	10,632	5,265		
	2	14,393	29,497	21,142	6,279	9,982	16,969	11,655	4,692		
	3	13,194	17,035	13,283	5,597	10,107	12,291	9,477	4,903		
	4	15,664	17,469	16,245	5,881	11,128	12,330	10,487	5,067		
	5	17,877	22,402	17,737	6,377	12,441	13,482	11,586	5,213		
	6	19,450	26,129	19,125	7,209	14,580	17,729	13,609	5,948		
	7	19,981	27,656	19,000	7,155	14,701	18,810	13,661	6,012		
	8	20,174	27,747	19,781	7,269	15,357	19,510	14,613	6,143		
	9	-	-	-	-	-	-	-	-	-	
	10	-	-	-	-	-	-	-	-	-	
	11	-	-	-	-	-	-	-	-	-	
	12	-	-	-	-	-	-	-	-	-	

[Home <<](#)

[previous <<](#)

[next >>](#)

[chart](#)

Load Zone Monthly Average Energy Price - DA vs. RT									
year	month	avgRTMp_Houston	avgRTMp_North	avgRTMp_South	avgRTMp_West	avgDAMp_Houston	avgDAMp_North	avgDAMp_South	avgDAMp_West
2020	1	\$ 16.65	\$ 17.03	\$ 17.27	\$ 24.25	\$ 17.48	\$ 17.57	\$ 17.87	\$ 23.75
	2	\$ 18.94	\$ 18.97	\$ 19.71	\$ 71.42	\$ 18.21	\$ 18.85	\$ 20.04	\$ 54.21
	3	\$ 27.03	\$ 26.02	\$ 25.72	\$ 69.03	\$ 25.88	\$ 24.94	\$ 25.51	\$ 66.94
	4	\$ 21.29	\$ 20.43	\$ 22.73	\$ 18.66	\$ 22.63	\$ 22.34	\$ 23.83	\$ 22.87
	5	\$ 23.27	\$ 18.12	\$ 23.42	\$ 15.20	\$ 21.41	\$ 20.28	\$ 21.50	\$ 20.11
	6	\$ 16.54	\$ 16.38	\$ 15.76	\$ 15.14	\$ 21.42	\$ 21.57	\$ 21.07	\$ 19.50
	7	\$ 21.44	\$ 21.40	\$ 23.62	\$ 19.29	\$ 26.21	\$ 25.76	\$ 25.93	\$ 23.82
	8	\$ 39.86	\$ 41.02	\$ 54.24	\$ 35.79	\$ 46.46	\$ 48.10	\$ 61.57	\$ 41.90
	9	\$ 22.80	\$ 22.72	\$ 25.43	\$ 21.43	\$ 21.48	\$ 20.45	\$ 20.95	\$ 20.85
	10	\$ 34.02	\$ 35.34	\$ 35.30	\$ 30.58	\$ 26.86	\$ 25.90	\$ 29.79	\$ 24.97
	11	\$ 27.19	\$ 24.78	\$ 25.28	\$ 34.71	\$ 26.49	\$ 24.88	\$ 26.78	\$ 29.86
	12	\$ 20.61	\$ 21.08	\$ 21.24	\$ 24.02	\$ 21.50	\$ 21.74	\$ 22.33	\$ 25.99
2021	1	\$ 21.23	\$ 21.92	\$ 23.45	\$ 20.58	\$ 21.92	\$ 22.57	\$ 23.90	\$ 21.47
	2	\$ 1,444.49	\$ 2,006.93	\$ 2,010.29	\$ 1,140.39	\$ 1,419.05	\$ 1,927.34	\$ 1,942.62	\$ 1,092.81
	3	\$ 27.22	\$ 20.85	\$ 22.09	\$ 16.43	\$ 27.64	\$ 21.77	\$ 20.16	\$ 18.24
	4	\$ 76.31	\$ 50.80	\$ 51.12	\$ 39.86	\$ 36.87	\$ 32.06	\$ 34.79	\$ 27.42
	5	\$ 26.40	\$ 26.73	\$ 26.13	\$ 20.94	\$ 32.20	\$ 26.20	\$ 26.74	\$ 22.18
	6	\$ 44.09	\$ 46.23	\$ 44.53	\$ 40.13	\$ 48.42	\$ 50.12	\$ 48.13	\$ 43.63
	7	\$ 39.41	\$ 43.23	\$ 39.32	\$ 40.17	\$ 45.43	\$ 47.19	\$ 45.41	\$ 43.96
	8	\$ 38.42	\$ 39.24	\$ 37.81	\$ 35.50	\$ 44.71	\$ 46.17	\$ 43.42	\$ 41.27
	9	\$ -	\$ -	\$ -	\$ -	\$ -	\$ -	\$ -	\$ -
	10	\$ -	\$ -	\$ -	\$ -	\$ -	\$ -	\$ -	\$ -
	11	\$ -	\$ -	\$ -	\$ -	\$ -	\$ -	\$ -	\$ -
	12	\$ -	\$ -	\$ -	\$ -	\$ -	\$ -	\$ -	\$ -

[Home <<](#)

[previous <<](#)

[next >>](#)

[chart](#)

ERCOT-wide Monthly Implied Heat Rate - DA vs. RT						
year	month	gasprice	rtm_spp	HR_rtm	dam_spp	HR_dam
2020	1	\$ 1.92	\$ 17.97	9.34	\$ 18.46	9.59
	2	\$ 1.83	\$ 26.12	14.25	\$ 23.69	12.92
	3	\$ 1.68	\$ 31.87	18.98	\$ 30.87	18.38
	4	\$ 1.65	\$ 21.06	12.73	\$ 22.89	13.84
	5	\$ 1.70	\$ 20.72	12.19	\$ 20.92	12.31
	6	\$ 1.57	\$ 16.13	10.30	\$ 21.18	13.52
	7	\$ 1.70	\$ 21.79	12.78	\$ 25.72	15.09
	8	\$ 2.23	\$ 43.72	19.60	\$ 50.64	22.70
	9	\$ 2.01	\$ 23.32	11.58	\$ 20.93	10.39
	10	\$ 2.44	\$ 34.39	14.12	\$ 27.12	11.13
	11	\$ 2.58	\$ 26.86	10.40	\$ 26.47	10.25
	12	\$ 2.55	\$ 21.38	8.38	\$ 22.37	8.77
2021	1	\$ 2.57	\$ 21.96	8.53	\$ 22.60	8.78
	2	\$ 51.48	\$ 1,784.27	34.66	\$ 1,723.84	33.49
	3	\$ 2.44	\$ 22.33	9.14	\$ 22.50	9.21
	4	\$ 2.61	\$ 56.74	21.75	\$ 33.56	12.87
	5	\$ 2.87	\$ 25.76	8.97	\$ 27.60	9.61
	6	\$ 3.17	\$ 44.48	14.04	\$ 48.37	15.27
	7	\$ 3.71	\$ 40.82	11.00	\$ 45.88	12.36
	8	\$ 3.98	\$ 38.22	9.60	\$ 44.50	11.18
	9	\$ -	\$ -	-	\$ -	-
	10	\$ -	\$ -	-	\$ -	-
	11	\$ -	\$ -	-	\$ -	-
	12	\$ -	\$ -	-	\$ -	-

[Home <<](#)

[previous <<](#)

[next >>](#)

[chart](#)



Load Zone Monthly Implied Heat Rate - DA vs. RT									
year	month	HRdam_Houston	HRdam_South	HRdam_North	HRdam_West	HRrtm_Houston	HRrtm_South	HRrtm_North	HRrtm_West
2020	1	9.08	9.29	9.13	12.34	8.65	8.98	8.85	12.60
	2	9.93	10.93	10.28	29.56	10.33	10.75	10.35	38.95
	3	15.41	15.19	14.85	39.87	16.10	15.32	15.49	41.11
	4	13.68	14.40	13.50	13.83	12.87	13.74	12.35	11.28
	5	12.59	12.65	11.93	11.83	13.69	13.78	10.66	8.94
	6	13.68	13.45	13.78	12.45	10.56	10.06	10.46	9.67
	7	15.38	15.21	15.11	13.98	12.58	13.86	12.56	11.32
	8	20.82	27.60	21.56	18.78	17.86	24.31	18.39	16.04
	9	10.66	10.40	10.16	10.35	11.32	12.62	11.28	10.64
	10	11.03	12.23	10.63	10.25	13.97	14.49	14.51	12.55
	11	10.26	10.37	9.63	11.56	10.53	9.79	9.59	13.44
	12	8.43	8.75	8.52	10.19	8.08	8.32	8.26	9.42
2021	1	8.52	9.29	8.77	8.34	8.25	9.11	8.52	8.00
	2	27.57	37.74	37.44	21.23	28.06	39.05	38.99	22.15
	3	11.32	8.25	8.91	7.47	11.14	9.04	8.53	6.73
	4	14.13	13.33	12.29	10.51	29.25	19.60	19.47	15.28
	5	11.21	9.30	9.12	7.72	9.19	9.09	9.30	7.29
	6	15.28	15.19	15.82	13.77	13.91	14.05	14.59	12.66
	7	12.24	12.23	12.71	11.84	10.62	10.59	11.65	10.82
	8	11.23	10.91	11.60	10.37	9.65	9.50	9.86	8.92
	9	-	-	-	-	-	-	-	-
	10	-	-	-	-	-	-	-	-
	11	-	-	-	-	-	-	-	-
	12	-	-	-	-	-	-	-	-

[Home <<](#)

[previous <<](#)

[next >>](#)

[chart](#)

Daily ORDC Adders Average Values and Interval Duration								
YEAR	MONTH	DAY	PRICE_RS	PRICE_RDP	RS_CNT	RDP_CNT	RS_POS	RDP_POS
2021	8	1	\$ -	\$ 0.27	0	13	80	90
2021	8	2	\$ -	\$ -	0	0	80	90
2021	8	3	\$ 2.61	\$ 33.22	28	30	80	90
2021	8	4	\$ 0.29	\$ 3.51	15	34	80	90
2021	8	5	\$ -	\$ 0.89	0	28	80	90
2021	8	6	\$ 0.01	\$ 1.08	1	12	80	90
2021	8	7	\$ -	\$ -	0	0	80	90
2021	8	8	\$ -	\$ -	0	0	80	90
2021	8	9	\$ -	\$ -	0	0	80	90
2021	8	10	\$ -	\$ -	0	0	80	90
2021	8	11	\$ -	\$ 0.79	0	24	80	90
2021	8	12	\$ -	\$ -	0	0	80	90
2021	8	13	\$ -	\$ 0.62	0	24	80	90
2021	8	14	\$ -	\$ -	0	0	80	90
2021	8	15	\$ -	\$ 0.34	0	9	80	90
2021	8	16	\$ 1.19	\$ 2.50	10	21	80	90
2021	8	17	\$ -	\$ 0.34	0	21	80	90
2021	8	18	\$ -	\$ 0.15	0	11	80	90
2021	8	19	\$ 1.39	\$ 9.20	19	9	80	90
2021	8	20	\$ -	\$ 0.64	0	9	80	90
2021	8	21	\$ -	\$ -	0	0	80	90
2021	8	22	\$ -	\$ -	0	0	80	90
2021	8	23	\$ -	\$ -	0	0	80	90
2021	8	24	\$ -	\$ 0.82	0	43	80	90
2021	8	25	\$ -	\$ 1.07	0	45	80	90
2021	8	26	\$ 0.38	\$ 2.06	19	20	80	90
2021	8	27	\$ -	\$ 1.04	0	24	80	90
2021	8	28	\$ -	\$ -	0	0	80	90
2021	8	29	\$ -	\$ 0.82	0	24	80	90
2021	8	30	\$ 1.74	\$ 2.30	20	23	80	90
2021	8	31	\$ 0.56	\$ -	15	0	80	90

[Home <<](#)

[previous <<](#)

[next >>](#)

[chart](#)

Monthly Average of Ancillary Services Required MW					
year	month	ASMW_REGDN	ASMW_NSPIN	ASMW_RRS	ASMW_REGUP
2020	1	271	1,565	2,893	293
	2	276	1,633	2,911	295
	3	293	1,462	2,969	298
	4	282	1,444	2,976	310
	5	314	1,492	2,667	339
	6	302	1,444	2,460	324
	7	294	1,321	2,373	304
	8	301	1,414	2,354	311
	9	304	1,387	2,470	307
	10	277	1,460	2,799	300
	11	259	1,463	2,939	284
	12	266	1,535	2,881	272
2021	1	317	1,535	2,964	345
	2	360	1,604	3,024	374
	3	373	1,500	3,023	374
	4	362	1,531	3,059	391
	5	382	1,481	2,794	403
	6	327	1,527	2,548	343
	7	300	2,858	2,508	306
	8	322	3,835	2,530	328
	9	-	-	-	-
	10	-	-	-	-
	11	-	-	-	-
	12	-	-	-	-

[Home <<](#)

[previous <<](#)

[next >>](#)

[chart](#)

Hourly Average of Ancillary Services Required MW					
year	DELIVERY_HOUR	ASMW_REGDN	ASMW_NSPIN	ASMW_RRS	ASMW_REGUP
2020	1	360	1,175	2,825	217
	2	272	1,175	2,825	189
	3	232	1,370	2,831	199
	4	187	1,369	2,832	226
	5	187	1,369	2,832	293
	6	266	1,369	2,832	452
	7	230	1,838	2,733	578
	8	233	1,838	2,733	360
	9	248	1,838	2,733	363
	10	265	1,838	2,733	386
	11	271	1,608	2,654	397
	12	239	1,608	2,654	396
	13	218	1,608	2,654	367
	14	241	1,608	2,654	321
	15	222	1,392	2,634	288
	16	204	1,392	2,634	279
	17	235	1,392	2,634	288
	18	285	1,392	2,634	312
	19	366	1,423	2,663	277
	20	360	1,423	2,663	249
	21	371	1,423	2,663	212
	22	454	1,423	2,663	197
	23	488	1,175	2,825	211
	24	445	1,175	2,825	219
2021	1	373	1,734	2,871	229
	2	292	1,751	2,871	206
	3	254	1,856	2,909	219
	4	212	1,845	2,910	240
	5	203	1,835	2,910	296
	6	263	1,811	2,910	431
	7	239	2,282	2,786	555
	8	273	2,295	2,786	366
	9	373	2,281	2,786	365
	10	399	2,265	2,786	448
	11	360	2,063	2,682	498
	12	330	2,066	2,682	503
	13	311	2,082	2,682	472
	14	369	2,092	2,682	440
	15	342	1,941	2,769	415
	16	325	1,955	2,769	420
	17	353	1,962	2,769	425
	18	381	1,970	2,769	455
	19	422	2,049	2,802	407
	20	368	2,049	2,802	310
	21	372	2,058	2,802	245
	22	471	2,075	2,802	230
	23	494	1,744	2,871	216
	24	444	1,752	2,871	191

[Home <<](#)

[previous <<](#)

[next >>](#)

[chart](#)

Monthly Average Ancillary Services Price					
year	month	MCPC_REGDN	MCPC_NSPIN	MCPC_RRS	MCPC_REGUP
2020	1	\$ 7.06	\$ 2.04	\$ 7.24	\$ 8.60
	2	\$ 6.46	\$ 3.78	\$ 10.06	\$ 10.33
	3	\$ 6.39	\$ 4.59	\$ 14.60	\$ 13.00
	4	\$ 10.83	\$ 5.15	\$ 12.78	\$ 12.31
	5	\$ 11.54	\$ 3.36	\$ 8.37	\$ 9.04
	6	\$ 7.57	\$ 4.69	\$ 7.70	\$ 7.89
	7	\$ 6.73	\$ 4.12	\$ 9.56	\$ 9.98
	8	\$ 7.32	\$ 11.02	\$ 23.91	\$ 22.42
	9	\$ 10.12	\$ 2.55	\$ 6.66	\$ 6.91
	10	\$ 10.22	\$ 5.47	\$ 9.81	\$ 10.82
	11	\$ 7.10	\$ 3.84	\$ 15.21	\$ 15.10
	12	\$ 9.71	\$ 3.16	\$ 11.03	\$ 9.49
2021	1	\$ 9.98	\$ 2.16	\$ 11.85	\$ 14.31
	2	\$ 1,272.06	\$ 1,676.26	\$ 3,808.44	\$ 3,218.92
	3	\$ 28.66	\$ 3.93	\$ 30.23	\$ 23.61
	4	\$ 24.82	\$ 12.43	\$ 29.20	\$ 31.78
	5	\$ 25.78	\$ 3.45	\$ 20.49	\$ 19.60
	6	\$ 11.14	\$ 19.82	\$ 29.28	\$ 26.37
	7	\$ 6.66	\$ 20.88	\$ 19.92	\$ 19.94
	8	\$ 8.53	\$ 18.12	\$ 17.90	\$ 18.91
	9	\$ -	\$ -	\$ -	\$ -
	10	\$ -	\$ -	\$ -	\$ -
	11	\$ -	\$ -	\$ -	\$ -
	12	\$ -	\$ -	\$ -	\$ -

[Home <<](#)

[previous <<](#)

[next >>](#)

[chart](#)

Monthly Average A/S Cost per MWh Load					
year	month	AScost_REGDN	AScost_NSPIIN	AScost_RRS	AScost_REGUP
2020	1	\$ 0.05	\$ 0.08	\$ 0.54	\$ 0.06
	2	\$ 0.04	\$ 0.15	\$ 0.73	\$ 0.08
	3	\$ 0.05	\$ 0.18	\$ 1.14	\$ 0.10
	4	\$ 0.08	\$ 0.20	\$ 1.02	\$ 0.10
	5	\$ 0.09	\$ 0.12	\$ 0.53	\$ 0.07
	6	\$ 0.05	\$ 0.14	\$ 0.38	\$ 0.05
	7	\$ 0.04	\$ 0.10	\$ 0.42	\$ 0.06
	8	\$ 0.04	\$ 0.28	\$ 1.03	\$ 0.13
	9	\$ 0.07	\$ 0.08	\$ 0.36	\$ 0.05
	10	\$ 0.07	\$ 0.19	\$ 0.65	\$ 0.08
	11	\$ 0.05	\$ 0.15	\$ 1.18	\$ 0.11
	12	\$ 0.06	\$ 0.12	\$ 0.78	\$ 0.06
2021	1	\$ 0.08	\$ 0.08	\$ 0.85	\$ 0.12
	2	\$ 10.56	\$ 62.11	\$ 265.95	\$ 27.81
	3	\$ 0.29	\$ 0.16	\$ 2.49	\$ 0.24
	4	\$ 0.23	\$ 0.49	\$ 2.29	\$ 0.32
	5	\$ 0.23	\$ 0.12	\$ 1.34	\$ 0.18
	6	\$ 0.07	\$ 0.58	\$ 1.44	\$ 0.17
	7	\$ 0.04	\$ 1.12	\$ 0.94	\$ 0.11
	8	\$ 0.05	\$ 1.25	\$ 0.81	\$ 0.11
	9	\$ -	\$ -	\$ -	\$ -
	10	\$ -	\$ -	\$ -	\$ -
	11	\$ -	\$ -	\$ -	\$ -
	12	\$ -	\$ -	\$ -	\$ -

[Home <<](#)

[previous <<](#)

[next >>](#)

[chart](#)

ERCOT-wide Cumulative PNM			
year	month	pnm	pnm_accum
2020	0	\$ -	\$ -
	1	\$ 948.71	\$ 948.71
	2	\$ 2,962.95	\$ 3,911.66
	3	\$ 6,596.00	\$ 10,507.66
	4	\$ 3,928.31	\$ 14,435.97
	5	\$ 2,971.45	\$ 17,407.42
	6	\$ 1,257.14	\$ 18,664.56
	7	\$ 3,082.86	\$ 21,747.42
	8	\$ 11,591.85	\$ 33,339.27
	9	\$ 3,063.07	\$ 36,402.34
	10	\$ 8,681.74	\$ 45,084.08
	11	\$ 3,520.43	\$ 48,604.51
	12	\$ 1,469.68	\$ 50,074.19
2021	0	\$ -	\$ -
	1	\$ 1,930.83	\$ 1,930.83
	2	\$ 705,718.36	\$ 707,649.19
	3	\$ 3,356.50	\$ 711,005.69
	4	\$ 19,870.21	\$ 730,875.90
	5	\$ 2,917.28	\$ 733,793.18
	6	\$ 10,048.24	\$ 743,841.42
	7	\$ 5,447.42	\$ 749,288.84
	8	\$ 3,062.97	\$ 752,351.81
	9	\$ -	\$ -
	10	\$ -	\$ -
	11	\$ -	\$ -
	12	\$ -	\$ -

[Home <<](#)

[previous <<](#)

[next >>](#)

[chart](#)

DA vs. RT Load Forecast Error by Hour Ending							
year	month	HE_1_4	HE_13_16	HE_17_20	HE_21_24	HE_5_8	HE_9_12
2020	1	73	(303)	(292)	(76)	255	(43)
	2	(89)	(84)	40	(39)	(160)	(113)
	3	(142)	313	202	192	5	490
	4	335	225	(90)	371	108	819
	5	488	332	420	829	(26)	729
	6	(163)	1,067	808	330	(262)	573
	7	218	403	467	452	294	382
	8	333	468	415	540	662	754
	9	12	596	930	497	155	62
	10	(308)	(154)	(527)	(323)	(169)	(58)
	11	(192)	(592)	(648)	(279)	171	(20)
	12	8	(583)	(257)	(230)	(57)	(724)
2021	1	58	(284)	(66)	(9)	302	(394)
	2	1,889	2,270	2,503	2,331	3,083	2,824
	3	(263)	440	452	119	(125)	(99)
	4	(349)	184	312	(233)	(428)	(384)
	5	(410)	(586)	(665)	(468)	(489)	(422)
	6	(663)	622	645	(158)	(535)	78
	7	(383)	971	950	302	(501)	530
	8	106	1,519	1,062	247	32	627
	9	-	-	-	-	-	-
	10	-	-	-	-	-	-
	11	-	-	-	-	-	-
	12	-	-	-	-	-	-

[Home <<](#)

[previous <<](#)

[next >>](#)

[chart](#)



Monthly Average of Wind Generation by Hour Ending							
year	month	HE_1_4	HE_13_16	HE_17_20	HE_21_24	HE_5_8	HE_9_12
2020	1	11,301	8,889	8,804	11,122	10,778	9,611
	2	11,703	8,927	9,127	11,552	11,418	9,565
	3	11,041	8,603	9,310	10,892	10,550	9,266
	4	11,740	9,020	9,632	11,683	10,687	9,300
	5	12,521	8,354	9,718	12,321	11,035	9,639
	6	13,993	8,966	11,459	13,741	11,821	10,210
	7	12,451	6,263	9,467	11,967	9,483	7,091
	8	11,838	5,872	7,466	11,126	9,403	7,204
	9	8,330	5,914	6,538	8,644	7,217	6,007
	10	11,781	7,862	8,387	11,600	10,670	8,756
	11	12,163	8,702	9,740	12,769	10,835	8,979
	12	12,653	10,356	10,665	12,599	11,951	10,062
2021	1	11,491	9,270	9,037	10,939	11,606	10,274
	2	9,300	8,420	8,532	10,575	8,759	8,461
	3	15,685	12,889	13,380	15,467	14,598	13,338
	4	13,724	11,336	11,823	13,261	12,803	11,939
	5	13,861	10,718	12,533	14,784	11,494	10,984
	6	12,577	7,161	9,179	12,511	9,782	7,803
	7	9,833	5,215	7,223	9,405	7,174	5,318
	8	12,425	7,508	10,092	12,428	9,872	7,849
	9	-	-	-	-	-	-
	10	-	-	-	-	-	-
	11	-	-	-	-	-	-
	12	-	-	-	-	-	-

[Home <<](#)

[previous <<](#)

[next >>](#)

[chart](#)

RT Congestion Constraint Rankings - Top 10 Constraints by Binding Frequency and Top 10 Constraints by Total Congestion Rent																
category	year	item	rankvar	rank	JAN	FEB	MAR	APR	MAY	JUN	JUL	AUG	SEP	OCT	NOV	DEC
FREQ_EXIST	2021	PANHANDLE GTC (PNHNDL)	16,963	1	2,790	1,257	5,042	3,801	2,037	785	227	1,024	-	-	-	-
FREQ_EXIST	2021	RAYMONDVILLE RIO HONDO GTC (RV RH)	15,015	2	1,667	2,630	2,944	2,514	2,229	1,272	581	1,178	-	-	-	-
FREQ_EXIST	2021	HAMILT MAVERI1 1 (HAMILTON-MAVERICK)	13,809	3	1,038	1,269	4,205	3,493	1,776	711	290	1,027	-	-	-	-
FREQ_EXIST	2021	NORTH EDINBURG LOBO GTC (NE LOB)	12,630	4	1,455	758	2,837	1,671	1,575	1,568	972	1,794	-	-	-	-
FREQ_EXIST	2021	HAIN LA PAL1 1 (LA PALMA-HAINE DR)	6,212	5	-	428	1,255	348	1,346	977	505	1,353	-	-	-	-
FREQ_EXIST	2021	651 B (CMNSW-CMNTP)	5,834	6	594	260	1,176	1,432	484	1,050	176	662	-	-	-	-
FREQ_EXIST	2021	TALLCITY TELPR 1 (TELPH RD-TALLCITY)	4,017	7	-	-	-	30	238	1,026	1,529	1,194	-	-	-	-
FREQ_EXIST	2021	BRUN1 69 1 (BRUNI-BRUNI)	3,498	8	378	592	1,044	320	105	158	435	466	-	-	-	-
FREQ_EXIST	2021	GARZA 69A1 (GARZA-GARZA)	3,484	9	1,928	825	731	-	-	-	-	-	-	-	-	-
FREQ_EXIST	2021	WESTEX GTC (WESTEX)	3,246	10	332	56	739	701	766	369	46	237	-	-	-	-
TOP10_RENT	2021	PAWNEE SPRUCE 1 (PAWNEE-CALAVERS)	\$ 106.91	1	\$ 0.39	\$ 106.40	\$ -	\$ -	\$ -	\$ 0.01	\$ 0.10	\$ -	\$ -	\$ -	\$ -	\$ -
TOP10_RENT	2021	PANHANDLE GTC (PNHNDL)	\$ 98.44	2	\$ 17.87	\$ 10.46	\$ 29.06	\$ 20.83	\$ 8.98	\$ 4.48	\$ 0.74	\$ 6.02	\$ -	\$ -	\$ -	\$ -
TOP10_RENT	2021	OAS-DOW LINES (OAS-DOW)	\$ 61.96	3	\$ -	\$ -	\$ -	\$ 61.96	\$ -	\$ -	\$ -	\$ -	\$ -	\$ -	\$ -	\$ -
TOP10_RENT	2021	STPWAP39 1 (STP-WAP)	\$ 57.59	4	\$ -	\$ -	\$ 13.37	\$ 38.62	\$ 0.10	\$ 0.13	\$ 1.42	\$ 3.95	\$ -	\$ -	\$ -	\$ -
TOP10_RENT	2021	NORTH EDINBURG LOBO GTC (NE LOB)	\$ 55.06	5	\$ 4.89	\$ 2.20	\$ 9.90	\$ 6.26	\$ 7.04	\$ 8.77	\$ 4.93	\$ 11.06	\$ -	\$ -	\$ -	\$ -
TOP10_RENT	2021	CKT 3132 1 (FPPYD1-WINCHES)	\$ 51.44	6	\$ -	\$ 51.44	\$ -	\$ -	\$ -	\$ -	\$ -	\$ -	\$ -	\$ -	\$ -	\$ -
TOP10_RENT	2021	HAIN LA PAL1 1 (LA PALMA-HAINE DR)	\$ 47.49	7	\$ -	\$ 13.62	\$ 6.69	\$ 1.82	\$ 5.35	\$ 5.58	\$ 2.46	\$ 11.97	\$ -	\$ -	\$ -	\$ -
TOP10_RENT	2021	915 E (CMBSW-DCDAM)	\$ 46.61	8	\$ -	\$ 46.61	\$ -	\$ -	\$ -	\$ -	\$ -	\$ -	\$ -	\$ -	\$ -	\$ -
TOP10_RENT	2021	ABNTHW MULBER1 1 (MULBERRY-ABNTHWST)	\$ 45.93	9	\$ -	\$ 45.93	\$ -	\$ -	\$ -	\$ -	\$ -	\$ -	\$ -	\$ -	\$ -	\$ -
TOP10_RENT	2021	TALLCITY TELPR 1 (TELPH RD-TALLCITY)	\$ 44.30	10	\$ -	\$ -	\$ -	\$ 0.21	\$ 2.73	\$ 14.91	\$ 17.75	\$ 8.70	\$ -	\$ -	\$ -	\$ -

[Home <<](#)

[previous <<](#)

[next >>](#)

[chart 1](#)

[chart 2](#)

DA Congestion Constraint Rankings - Top 10 Constraints by Binding Frequency and Top 10 Constraints by Total Congestion Rent																
category	year	item	rankvar	rank	JAN	FEB	MAR	APR	MAY	JUN	JUL	AUG	SEP	OCT	NOV	DEC
FREQ_EXIST	2021	RAYMONDVILLE RIO HONDO GTC (RV_RH)	2,935	1	404	459	388	404	267	338	329	346	-	-	-	-
FREQ_EXIST	2021	PANHANDLE GTC (PNHNDL)	2,205	2	332	227	496	450	290	148	66	196	-	-	-	-
FREQ_EXIST	2021	FLTBES TLINE 1 (FLAT_TOP-FLTBES)	2,170	3	339	373	598	424	254	105	32	45	-	-	-	-
FREQ_EXIST	2021	NORTH EDINBURG LOBO GTC (NE_LOB)	1,972	4	220	165	316	207	308	280	219	277	-	-	-	-
FREQ_EXIST	2021	WORSHAM WOR1 (WORSHAM-WORSHAM)	1,887	5	51	161	440	462	492	269	11	1	-	-	-	-
FREQ_EXIST	2021	HAMILT_MAVR1_1 (HAMILTON-MAVERICK)	1,858	6	178	87	340	352	299	236	108	258	-	-	-	-
FREQ_EXIST	2021	651_B (CMNSW-CMNTP)	1,695	7	190	99	300	317	185	210	119	275	-	-	-	-
FREQ_EXIST	2021	PYOTE_PYT1 (PYOTE-PYOTE)	1,643	8	-	83	268	374	419	404	85	10	-	-	-	-
FREQ_EXIST	2021	NLARSW_PILONC1_1 (NLARSW-PILONCIL)	1,584	9	354	314	266	176	198	130	49	97	-	-	-	-
FREQ_EXIST	2021	RIOHND_ERIOHND_1 (MV_RIOHO-RIOHONDO)	1,520	10	154	237	91	335	435	163	56	49	-	-	-	-
TOP10_RENT	2021	PANHANDLE GTC (PNHNDL)	\$ 93.00	1	\$ 15.82	\$ 10.25	\$ 23.63	\$ 20.62	\$ 11.72	\$ 4.06	\$ 1.51	\$ 5.39	\$ -	\$ -	\$ -	\$ -
TOP10_RENT	2021	NORTH EDINBURG LOBO GTC (NE_LOB)	\$ 45.91	2	\$ 4.45	\$ 2.84	\$ 7.21	\$ 5.42	\$ 7.17	\$ 6.19	\$ 4.13	\$ 8.50	\$ -	\$ -	\$ -	\$ -
TOP10_RENT	2021	TALLCITY_TELPR_1 (TELPH_RD-TALLCITY)	\$ 40.48	3	\$ -	\$ 0.54	\$ -	\$ 0.10	\$ 1.85	\$ 12.57	\$ 13.69	\$ 11.75	\$ -	\$ -	\$ -	\$ -
TOP10_RENT	2021	6265_E (RHTP2-DENSW)	\$ 30.35	4	\$ -	\$ -	\$ 0.01	\$ -	\$ 8.26	\$ 7.95	\$ 3.94	\$ 10.19	\$ -	\$ -	\$ -	\$ -
TOP10_RENT	2021	588_B_1 (LWSVH-LWSVW)	\$ 28.64	5	\$ -	\$ 1.42	\$ 6.69	\$ 10.35	\$ 2.70	\$ 3.36	\$ 0.36	\$ 3.76	\$ -	\$ -	\$ -	\$ -
TOP10_RENT	2021	SANDCR_AT1 (SANDCR-SANDCR)	\$ 20.95	6	\$ -	\$ 20.61	\$ -	\$ -	\$ -	\$ 0.05	\$ 0.04	\$ 0.25	\$ -	\$ -	\$ -	\$ -
TOP10_RENT	2021	HAINA_LA_PAL1_1 (LA_PALMA-HAINA DR)	\$ 20.30	7	\$ -	\$ 0.14	\$ 0.35	\$ 2.83	\$ 3.13	\$ 4.98	\$ 1.86	\$ 7.01	\$ -	\$ -	\$ -	\$ -
TOP10_RENT	2021	BLESSI_PAVLOV1_1 (BLESSING-PAVLOV)	\$ 19.06	8	\$ 0.31	\$ 0.09	\$ 14.32	\$ 3.86	\$ 0.02	\$ 0.41	\$ 0.00	\$ 0.03	\$ -	\$ -	\$ -	\$ -
TOP10_RENT	2021	CRD_CRD2 (CRD-CRD)	\$ 18.88	9	\$ 0.58	\$ 18.06	\$ 0.18	\$ 0.00	\$ 0.00	\$ 0.01	\$ 0.05	\$ -	\$ -	\$ -	\$ -	\$ -
TOP10_RENT	2021	WESTEX GTC (WESTEX)	\$ 17.18	10	\$ 2.49	\$ 0.26	\$ 7.04	\$ 1.31	\$ 1.98	\$ 3.94	\$ 0.14	\$ 0.02	\$ -	\$ -	\$ -	\$ -

[Home <<](#)

[previous <<](#)

[next >>](#)

[chart 1](#)

[chart 2](#)

Top 10 CRR Pairs Ranked by Monthly Auction Values - Top 10 PTP Obligations by Total Transaction Values and Top 10 PTP Options by Total Transaction Values																			
fr_option	year	pair	total_value	rank	JAN	FEB	MAR	APR	MAY	JUN	JUL	AUG	SEP	OCT	NOV	DEC			
N	2021	HB SOUTH-LZ SOUTH	\$ 19.42	1	\$ 1.87	\$ 1.50	\$ 1.44	\$ 2.15	\$ 2.83	\$ 3.34	\$ 2.55	\$ 2.08	\$ 1.66	\$ -	\$ -	\$ -			
N	2021	HB WEST-LZ WEST	\$ 14.73	2	\$ 2.73	\$ 1.29	\$ 1.38	\$ 0.98	\$ 1.17	\$ 2.18	\$ 1.82	\$ 1.06	\$ 2.11	\$ -	\$ -	\$ -			
N	2021	HB NORTH-LZ NORTH	\$ 11.71	3	\$ 0.93	\$ 0.83	\$ 0.77	\$ 0.94	\$ 0.85	\$ 2.63	\$ 1.63	\$ 1.55	\$ 1.58	\$ -	\$ -	\$ -			
N	2021	HB NORTH-HB HOUSTON	\$ 10.66	4	\$ 0.15	\$ 0.14	\$ 0.45	\$ 1.12	\$ 1.46	\$ 2.76	\$ 1.85	\$ 1.23	\$ 1.50	\$ -	\$ -	\$ -			
N	2021	HB WEST-HB NORTH	\$ 10.19	5	\$ 0.62	\$ 1.68	\$ 1.69	\$ 1.67	\$ 1.75	\$ 1.67	\$ 0.22	\$ 0.23	\$ 0.68	\$ -	\$ -	\$ -			
N	2021	HB PAN-HB WEST	\$ 5.01	6	\$ 0.64	\$ 0.11	\$ 0.12	\$ 0.89	\$ 2.59	\$ 0.49	\$ 0.03	\$ 0.01	\$ 0.14	\$ -	\$ -	\$ -			
N	2021	HB HOUSTON-LZ HOUSTON	\$ 3.95	7	\$ 0.14	\$ 0.27	\$ 0.19	\$ 0.32	\$ 0.65	\$ 1.07	\$ 0.49	\$ 0.30	\$ 0.52	\$ -	\$ -	\$ -			
N	2021	AEEC-LZ WEST	\$ 2.60	8	\$ 0.53	\$ 0.42	\$ 0.52	\$ 0.44	\$ 0.41	\$ 0.17	\$ 0.04	\$ 0.01	\$ 0.04	\$ -	\$ -	\$ -			
N	2021	STP STP G1-HB HOUSTON	\$ 2.37	9	\$ 0.05	\$ 0.07	\$ -	\$ 0.65	\$ 0.18	\$ 0.77	\$ 0.27	\$ 0.32	\$ 0.06	\$ -	\$ -	\$ -			
N	2021	STP STP G2-HB HOUSTON	\$ 1.33	10	\$ 0.14	\$ 0.01	\$ -	\$ 0.35	\$ -	\$ 0.16	\$ 0.27	\$ 0.35	\$ 0.05	\$ -	\$ -	\$ -			
Y	2021	HB SOUTH-LZ SOUTH	\$ 5.57	1	\$ 0.30	\$ 0.32	\$ 0.24	\$ 0.42	\$ 0.76	\$ 1.32	\$ 0.73	\$ 0.85	\$ 0.64	\$ -	\$ -	\$ -			
Y	2021	HB NORTH-LZ NORTH	\$ 4.23	2	\$ 0.43	\$ 0.65	\$ 0.17	\$ 0.57	\$ 0.56	\$ 0.87	\$ 0.34	\$ 0.30	\$ 0.34	\$ -	\$ -	\$ -			
Y	2021	HB WEST-LZ WEST	\$ 3.86	3	\$ 0.28	\$ 0.59	\$ 0.44	\$ 0.36	\$ 0.37	\$ 0.66	\$ 0.42	\$ 0.26	\$ 0.47	\$ -	\$ -	\$ -			
Y	2021	TORR ALL-HB SOUTH	\$ 3.03	4	\$ 0.72	\$ 0.22	\$ 0.53	\$ 0.06	\$ 0.10	\$ 0.17	\$ 0.72	\$ 0.22	\$ 0.30	\$ -	\$ -	\$ -			
Y	2021	TORR ALL-SAN SANMIGG1	\$ 1.87	5	\$ 0.07	\$ 0.18	\$ 0.07	\$ 0.01	\$ 0.09	\$ 0.43	\$ 0.43	\$ 0.46	\$ 0.14	\$ -	\$ -	\$ -			
Y	2021	HB HOUSTON-LZ HOUSTON	\$ 1.87	6	\$ 0.06	\$ 0.16	\$ 0.15	\$ 0.21	\$ 0.45	\$ 0.34	\$ 0.18	\$ 0.10	\$ 0.22	\$ -	\$ -	\$ -			
Y	2021	HB SOUTH-LZ CPS	\$ 1.83	7	\$ 0.00	\$ 0.00	\$ 0.00	\$ 0.00	\$ 0.17	\$ 0.70	\$ 0.30	\$ 0.47	\$ 0.18	\$ -	\$ -	\$ -			
Y	2021	BRISCOE WIND-FOARDCTY_ALL	\$ 1.76	8	\$ 0.02	\$ 0.63	\$ 0.94	\$ 0.12	\$ 0.05	\$ -	\$ -	\$ -	\$ -	\$ -	\$ -	\$ -			
Y	2021	PH1 UNIT1 2-OKLA OKLA G1	\$ 1.38	9	\$ 0.00	\$ 0.58	\$ 0.80	\$ -	\$ -	\$ -	\$ -	\$ -	\$ -	\$ -	\$ -	\$ -			
Y	2021	MISAE_GEN_RN-BLSMT1_5_A_6	\$ 1.23	10	\$ 0.05	\$ 0.11	\$ 0.53	\$ 0.17	\$ 0.13	\$ 0.24	\$ 0.00	\$ 0.01	\$ 0.00	\$ -	\$ -	\$ -			

[Home <<](#)

[previous <<](#)

[chart 1](#)

[chart 2](#)