

To the Public Utility Commission of Texas

ERCOT Wholesale Electricity Market Monthly Report

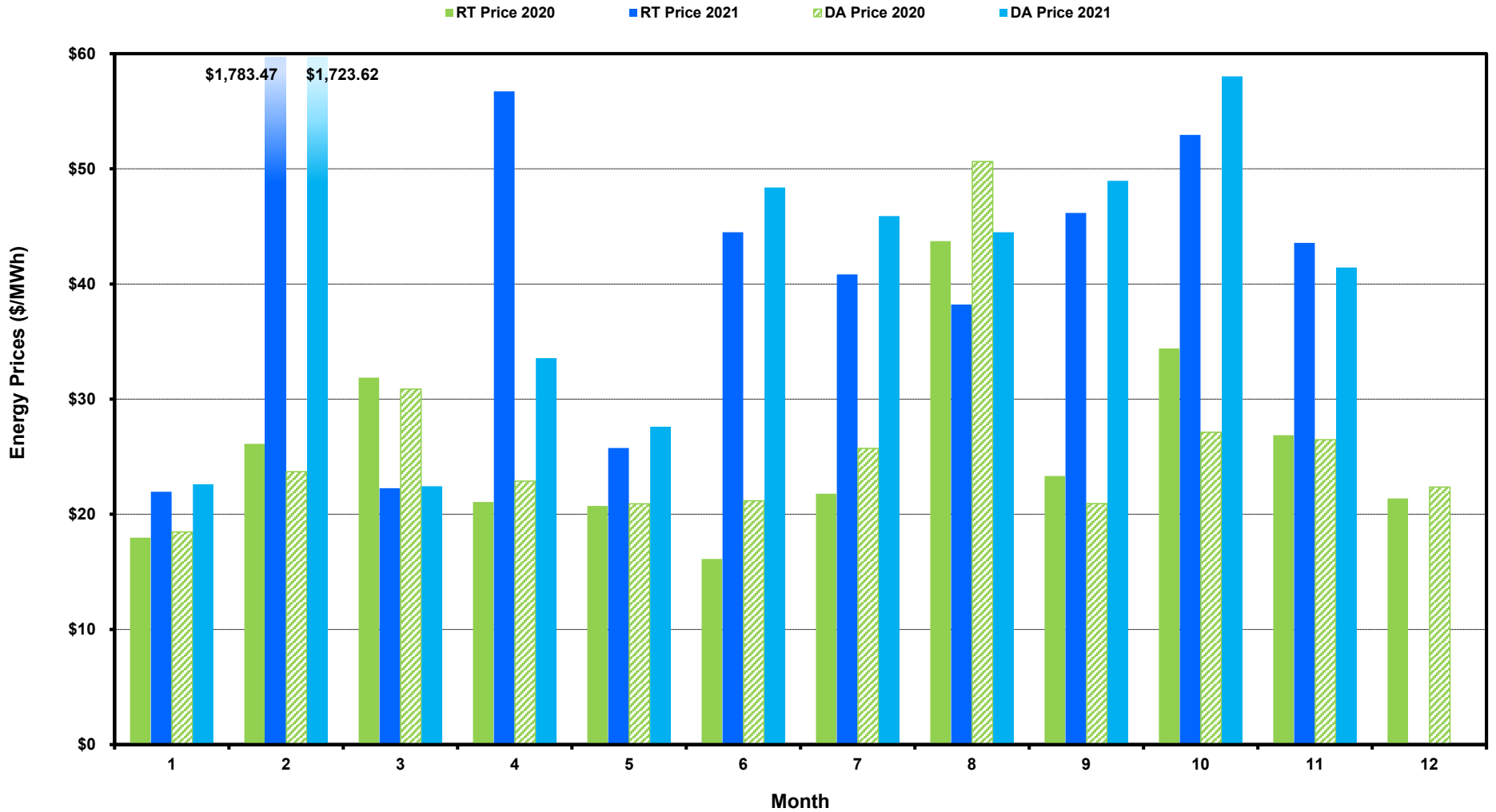
Friday, December 10, 2021

Potomac Economics, Ltd.
Independent Market Monitor

1	ERCOT-wide Average Energy Prices DA vs. RT	chart	table
2	Load Zone Load Statistics	chart	table
3	Load Zone Monthly Average Energy Prices DA vs RT	chart	table
4	ERCOT-wide Monthly Implied Heat Rates DA vs RT	chart	table
5	Load Zone Monthly Implied Heat Rates DA vs RT	chart	table
6	Daily ORDC Reserve Adder Avg. Value and Duration	chart	table
7	Monthly Ancillary Services Required MW	chart	table
8	Hourly Average of Ancillary Services Required MW	chart	table
9	Monthly Average Ancillary Services Price	chart	table
10	Monthly Average A/S Cost per MWh Load	chart	table
11	Ercot-wide Cumulative Peaker Net Margin	chart	table
12	DA vs. RT Load Forecast Error by Hour Ending	chart	table
13	Monthly Average of Wind Generation by Hour Ending	chart	table
14	RT Constraint Rankings		table
	- Top 10 Constraints by Total Congestion Value	chart	
	- Top 10 Constraints by Binding Frequency	chart	
15	DA Constraint Rankings		table
	- Top 10 Constraints by Total Congestion Value	chart	
	- Top 10 Constraints by Binding Frequency	chart	
16	CRR Pairs by Monthly Auction Value Rankings		table
	- Top 10 PTP Obligations by Total Transaction Value	chart	
	- Top 10 PTP Options by Total Transaction Value	chart	

ERCOT-wide Average Energy Prices DA vs RT

(avg. DA & RT SPPs weighted by Real Time Settlement Loads)



[Home <<](#)

[previous <<](#)

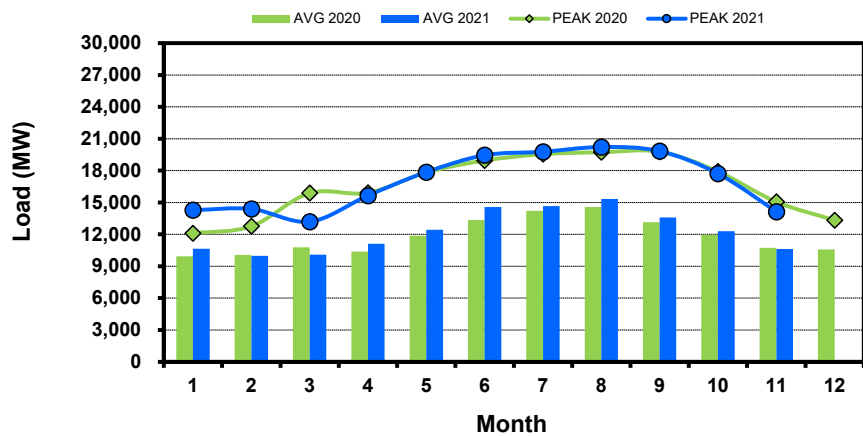
[next >>](#)

[data](#)

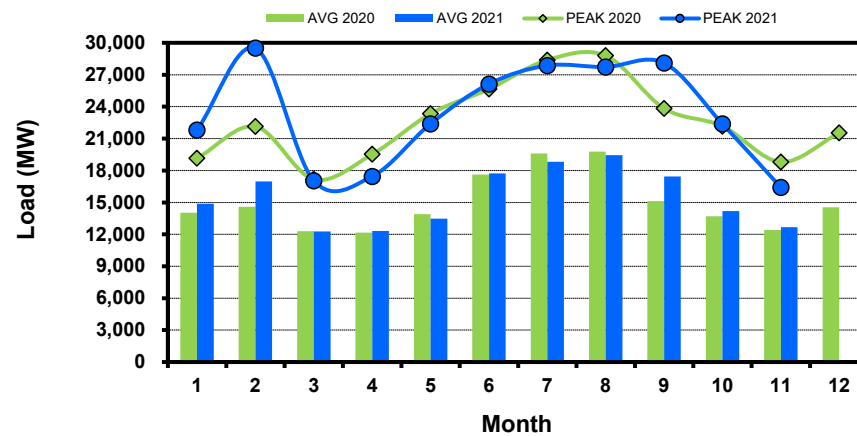
Load Zone Load Statistics

(Nodal load zone made comparable to zonal system Load Zone definitions*)

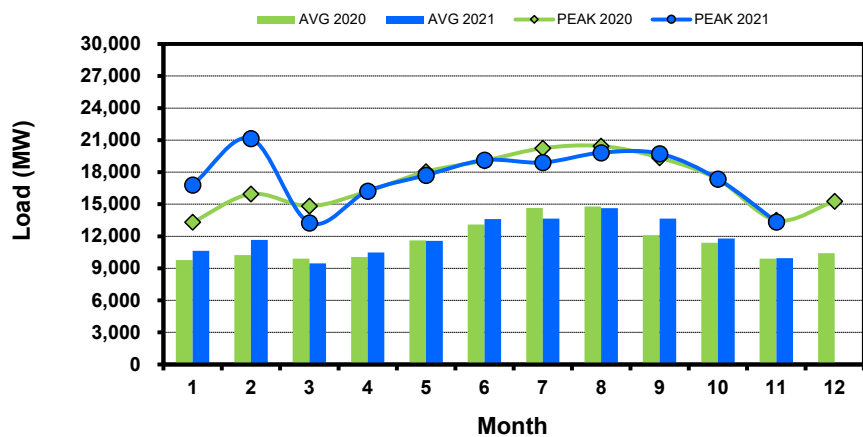
Houston Zone



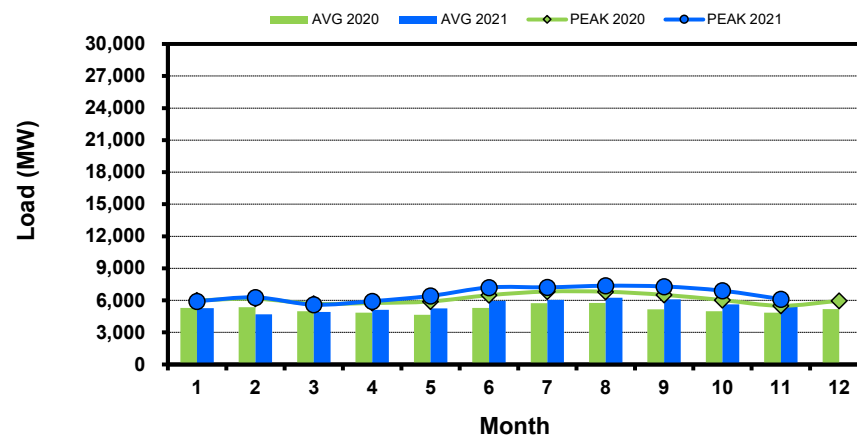
North Zone



South Zone



West Zone



[Home <<](#)

[previous <<](#)

[next >>](#)

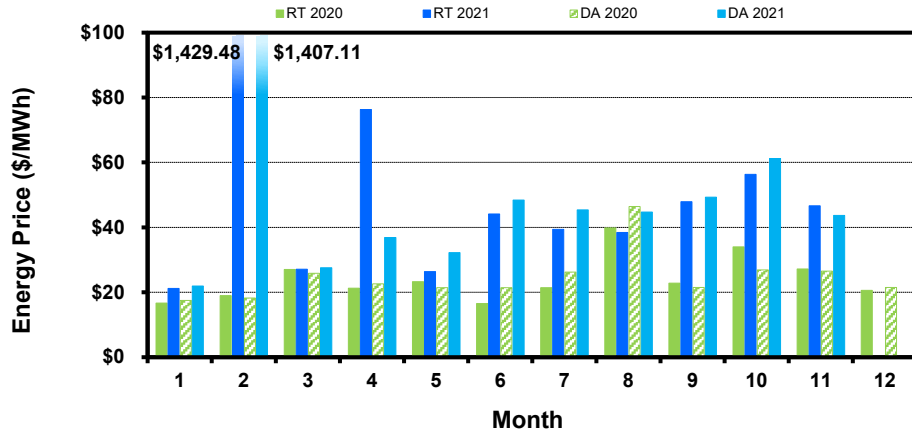
[data](#)

Note: * Zonal load zone definition vs. Nodal comparable load zone definition: LZ_Houston=LZ_Houston; LZ_West=LZ_West; LZ_North=(LZ_North,LZ_RAYBN); LZ_South=(LZ_South,LZ_CPS,LZ_AEN,LZ_LCRA)

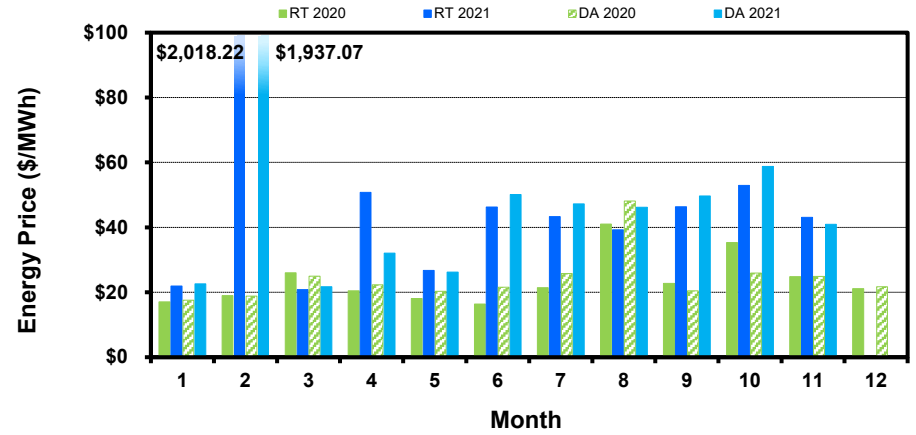
Load Zone Monthly Average Energy Price DA vs RT

(avg. DA & RT SPPs weighted by Real Time Settlement Loads)
 (Nodal load zone made comparable to zonal system Load Zone definitions*)

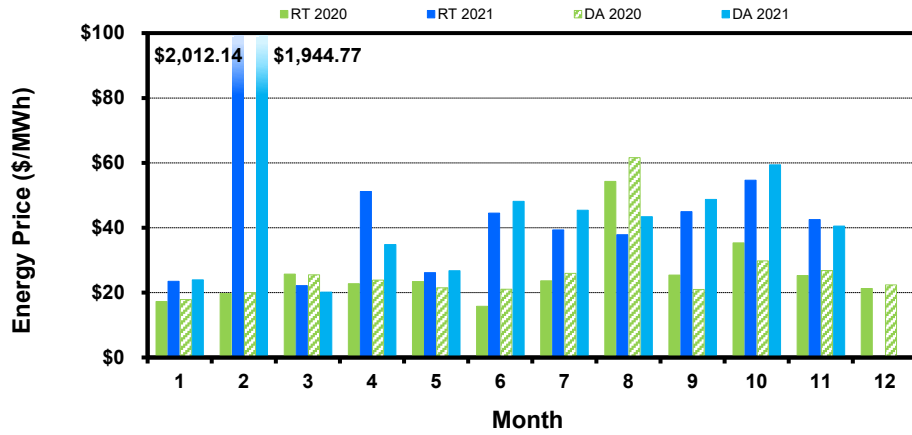
Houston Zone



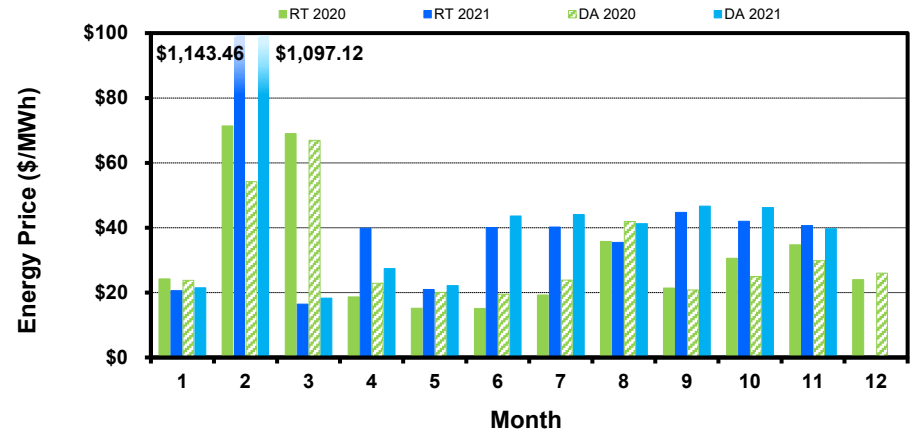
North Zone



South Zone



West Zone



[Home <<](#)

[previous <<](#)

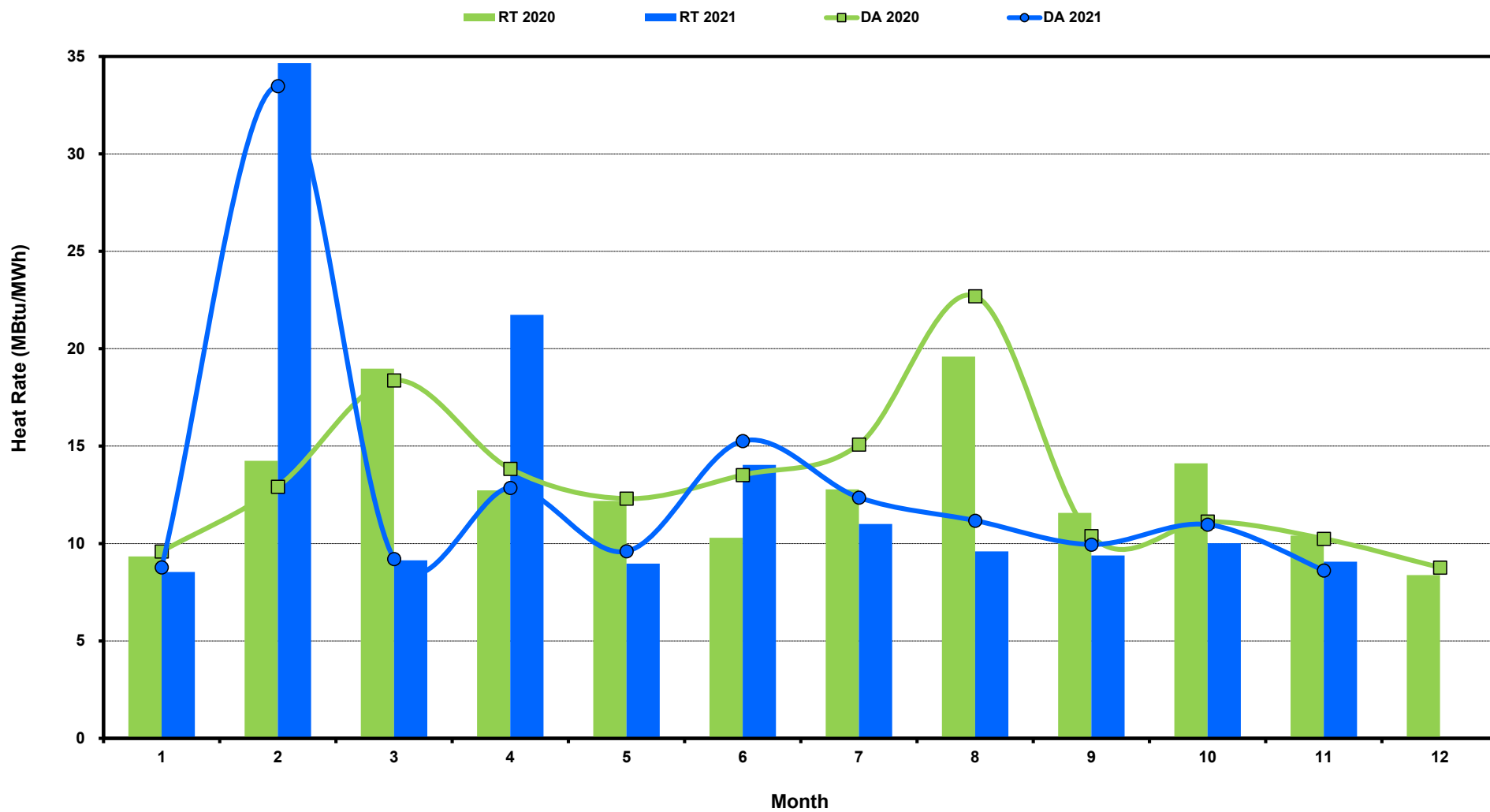
[next >>](#)

[data](#)

Note: * Zonal load zone definition vs. Nodal comparable load zone definition: LZ_Houston=LZ_Houston; LZ_West=LZ_West; LZ_North=(LZ_North,LZ_RAYBN); LZ_South=(LZ_South,LZ_CPS,LZ_AEN,LZ_LCRA)

ERCOT-wide Monthly Implied Heat Rate DA vs RT

(avg. heat rates weighted by Real Time Settlement Loads)



[Home <<](#)

[previous <<](#)

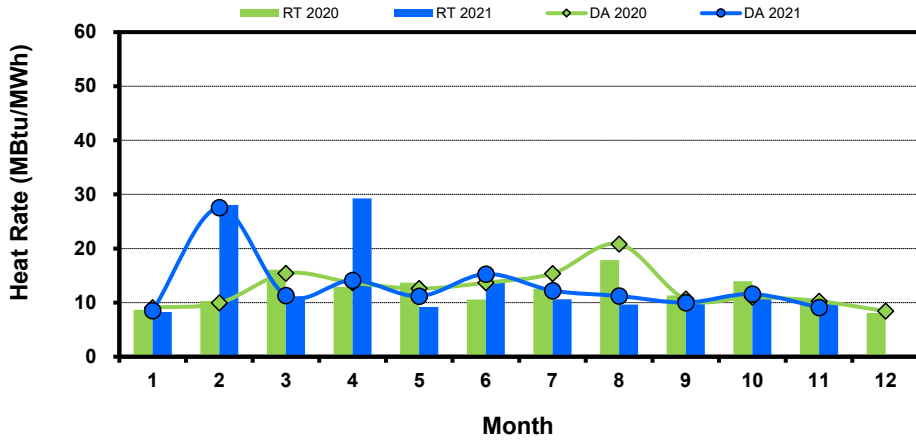
[next >>](#)

[data](#)

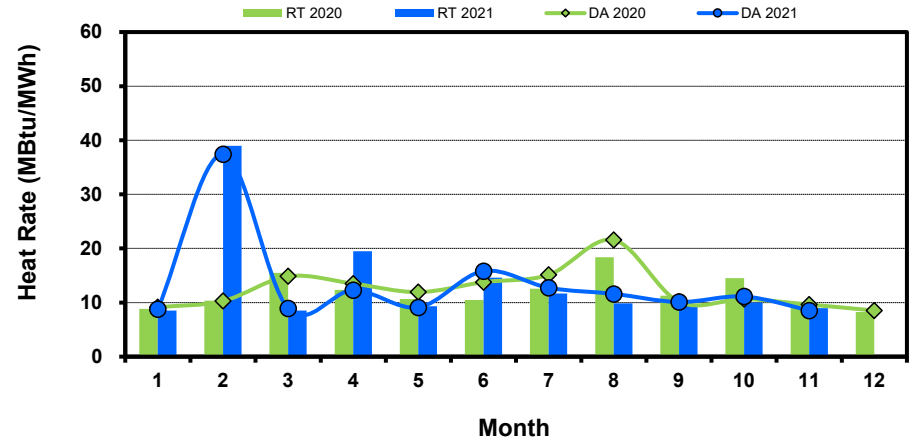
Load Zone Monthly Implied Heat Rate DA vs RT

(avg. heat rates weighted by Real Time Settlement Loads)
 (Nodal load zone made comparable to zonal system Load Zone definitions*)

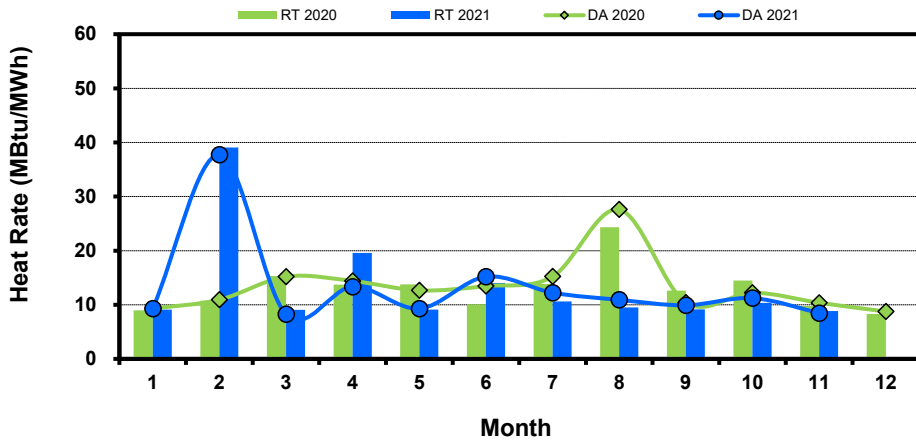
Houston Zone



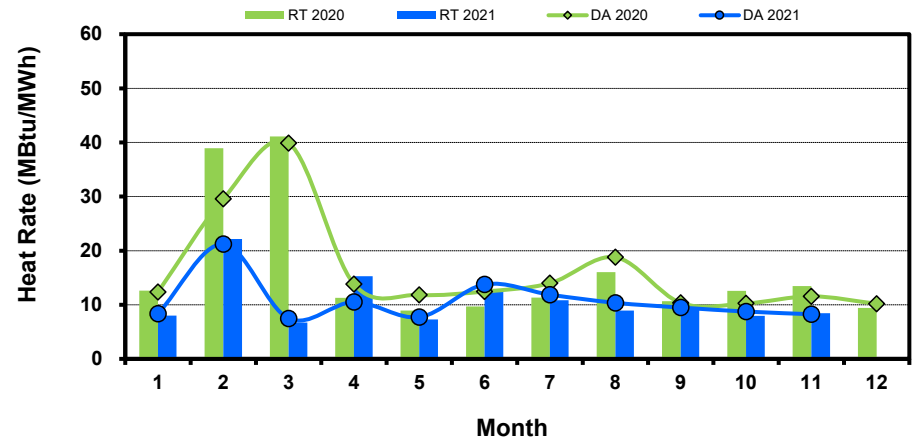
North Zone



South Zone



West Zone



[Home <<](#)

[previous <<](#)

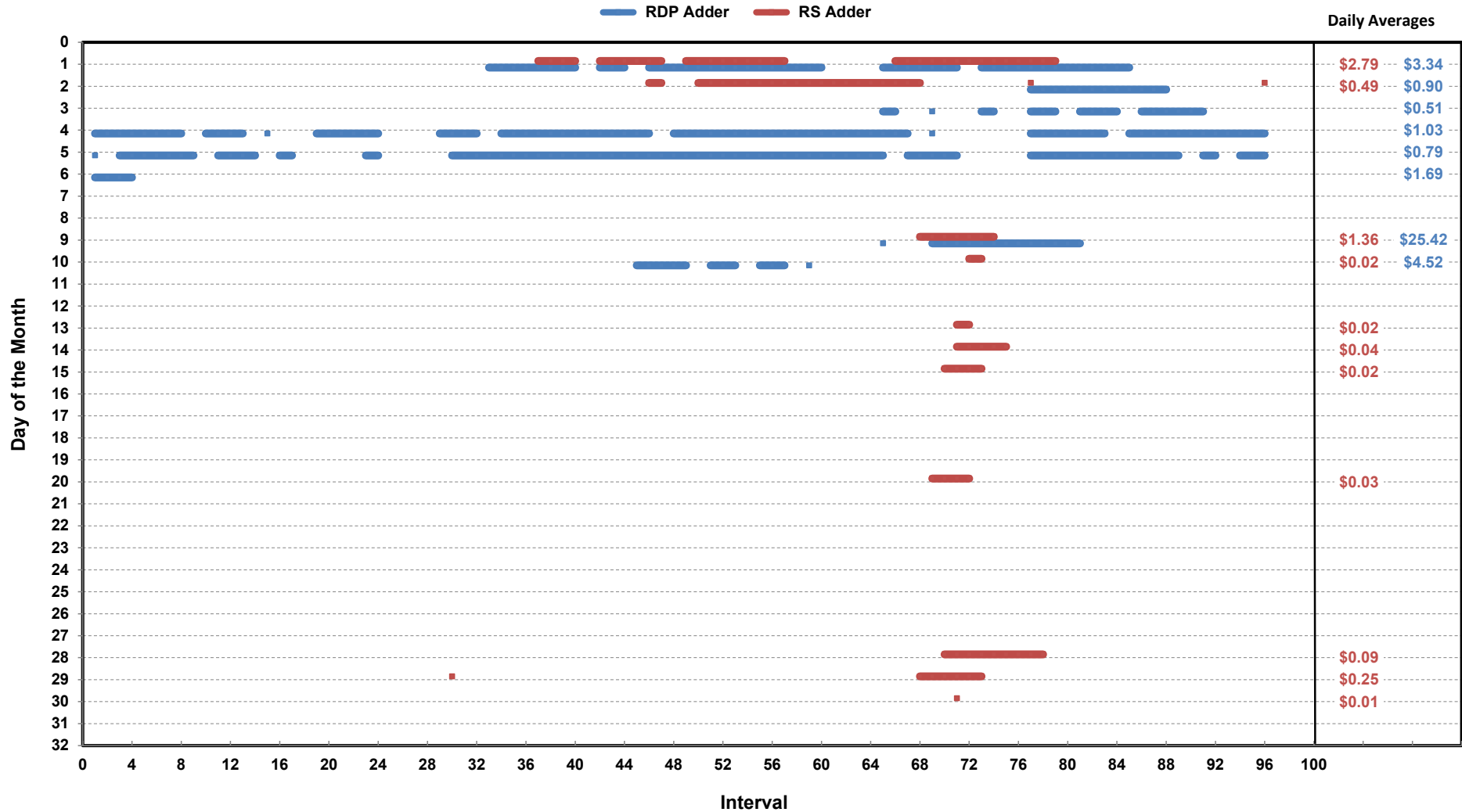
[next >>](#)

[data](#)

Note: * Zonal load zone definition vs. Nodal comparable load zone definition: LZ_Houston=LZ_Houston; LZ_West=LZ_West; LZ_North=(LZ_North,LZ_RAYBN); LZ_South=(LZ_South,LZ_CPS,LZ_AEN,LZ_LCRA)

Daily ORDC Adders Average Values and Interval Duration

Nov-2021



[Home <<](#)

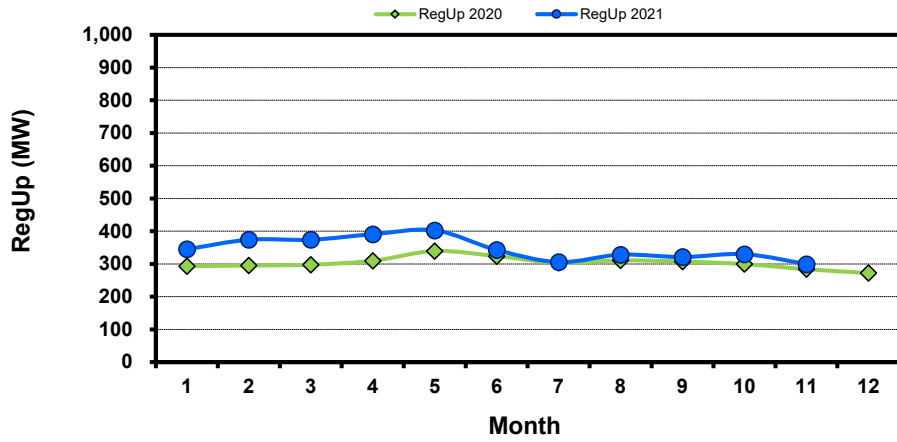
[previous <<](#)

[next >>](#)

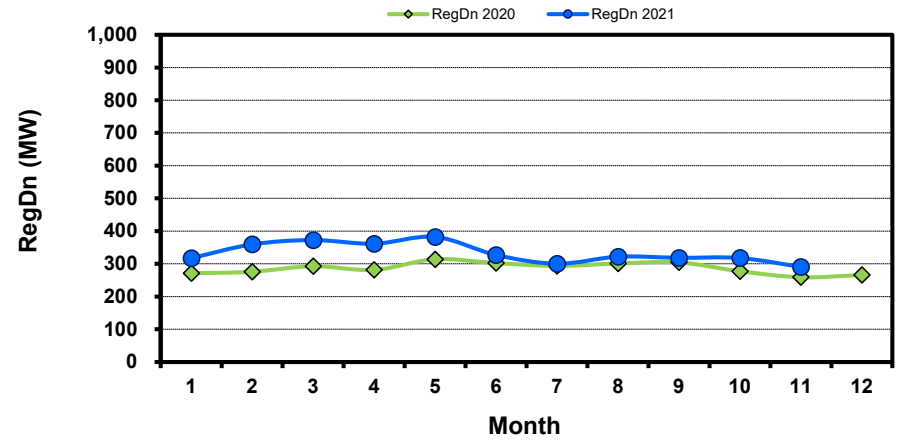
[data](#)

Monthly Average of Ancillary Services Required MW

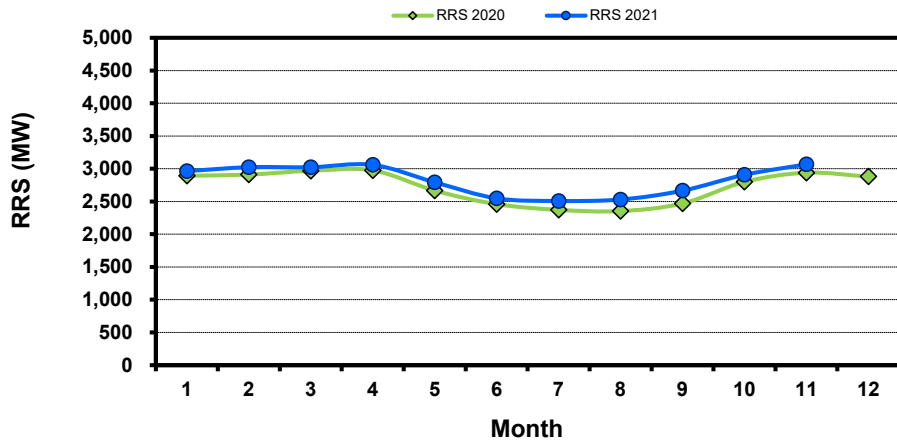
Regulation Up



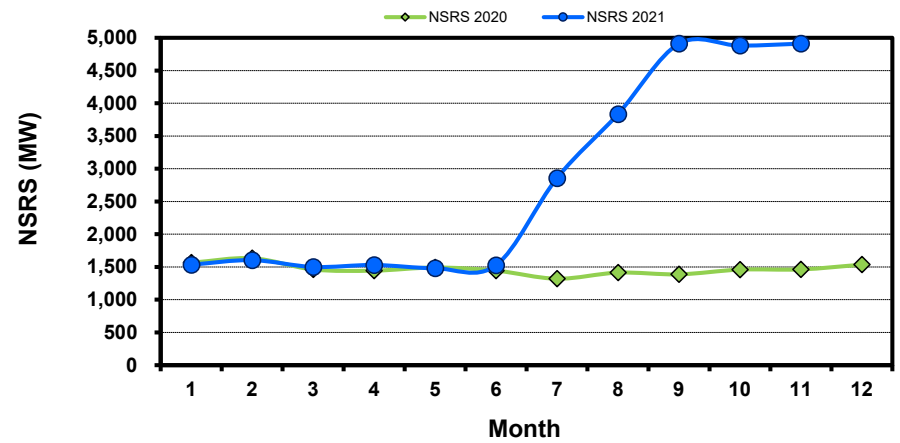
Regulation Down



Responsive Reserve



Non-Spin Reserve



[Home <<](#)

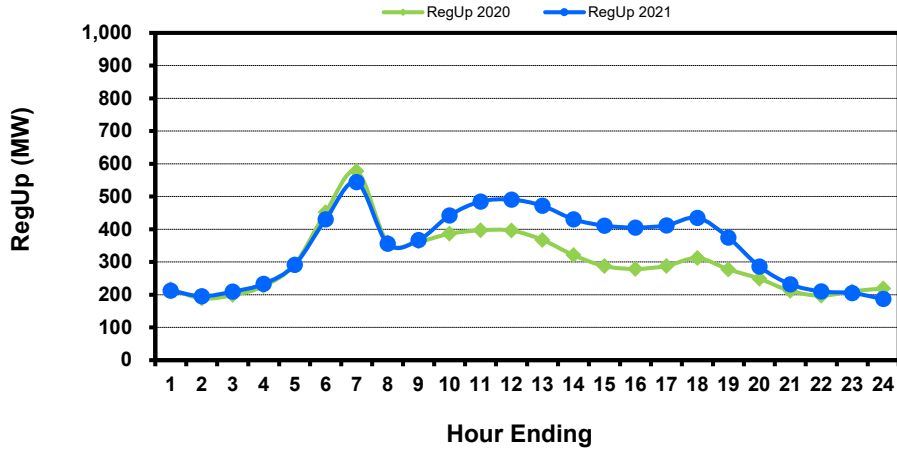
[previous <<](#)

[next >>](#)

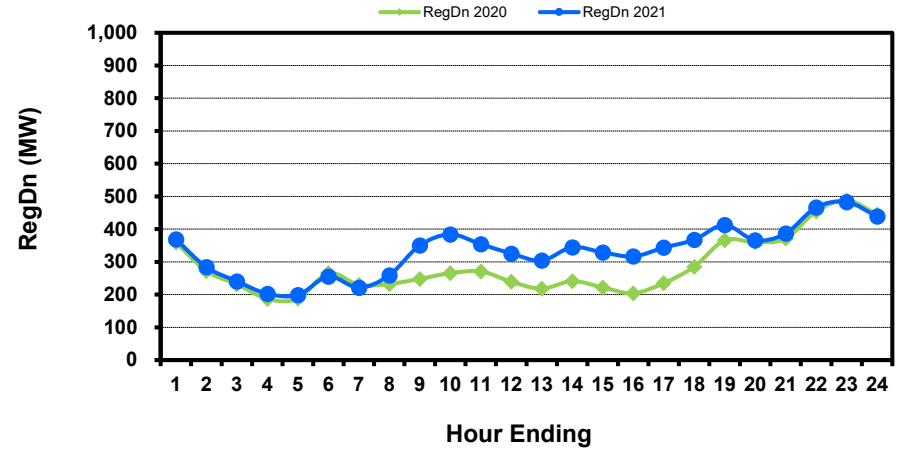
[data](#)

Hourly Average of Ancillary Services Required MW

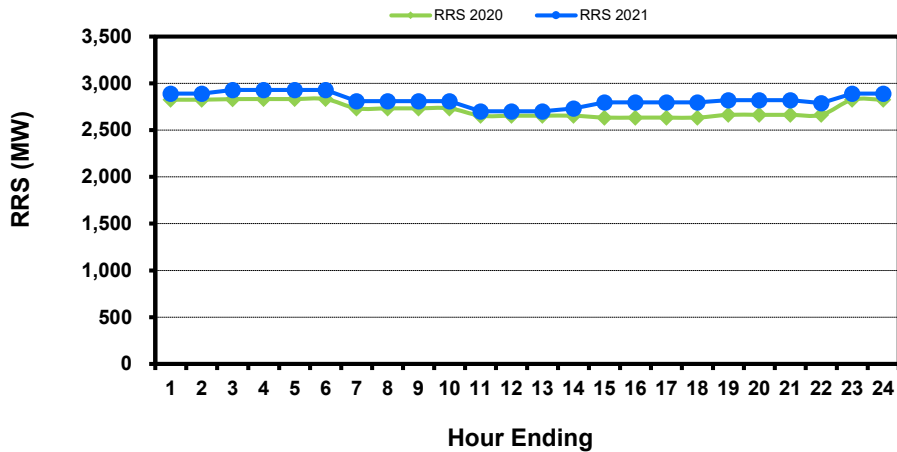
Regulation Up



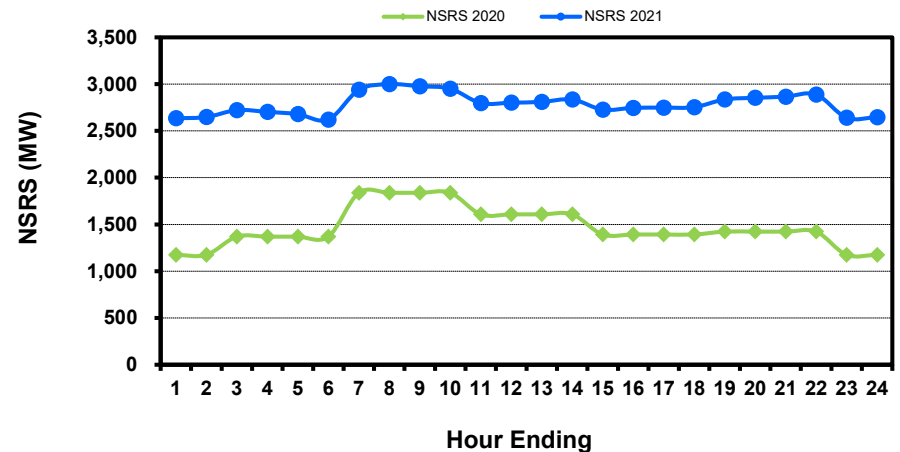
Regulation Down



Responsive Reserve



Non-Spin Reserve



[Home <<](#)

[previous <<](#)

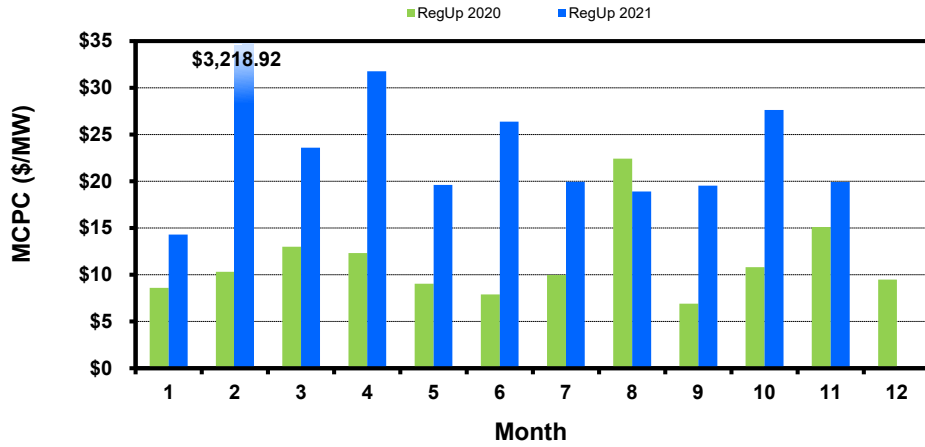
[next >>](#)

[data](#)

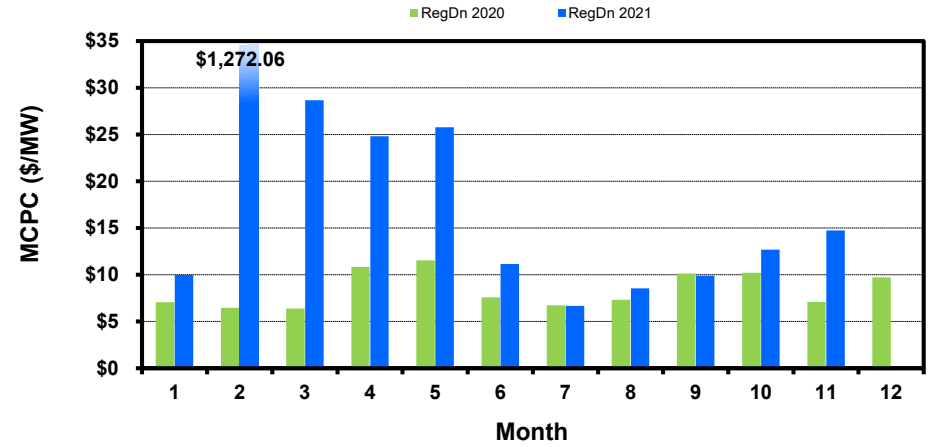
Monthly Average Ancillary Services Price

(weighted by A/S Quantities Required)

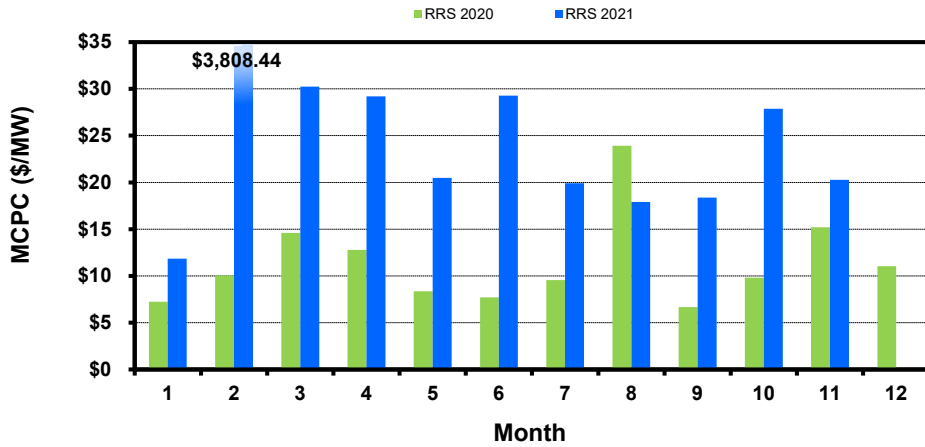
Regulation Up



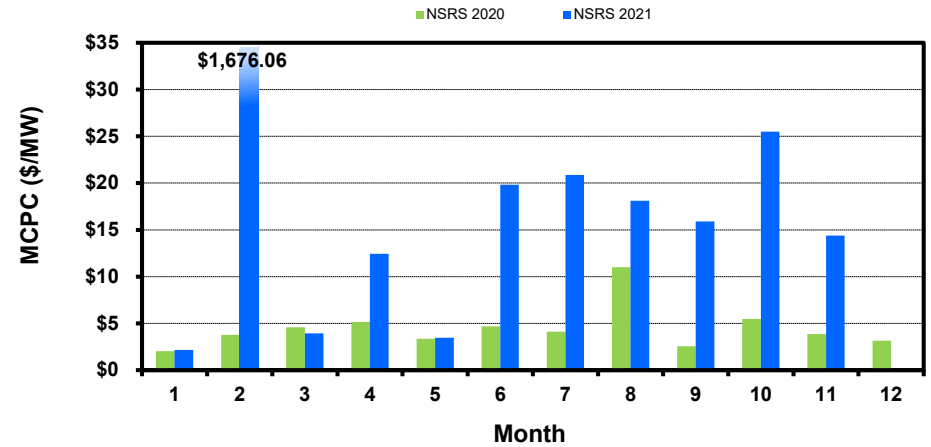
Regulation Down



Responsive Reserve



Non-Spin Reserve



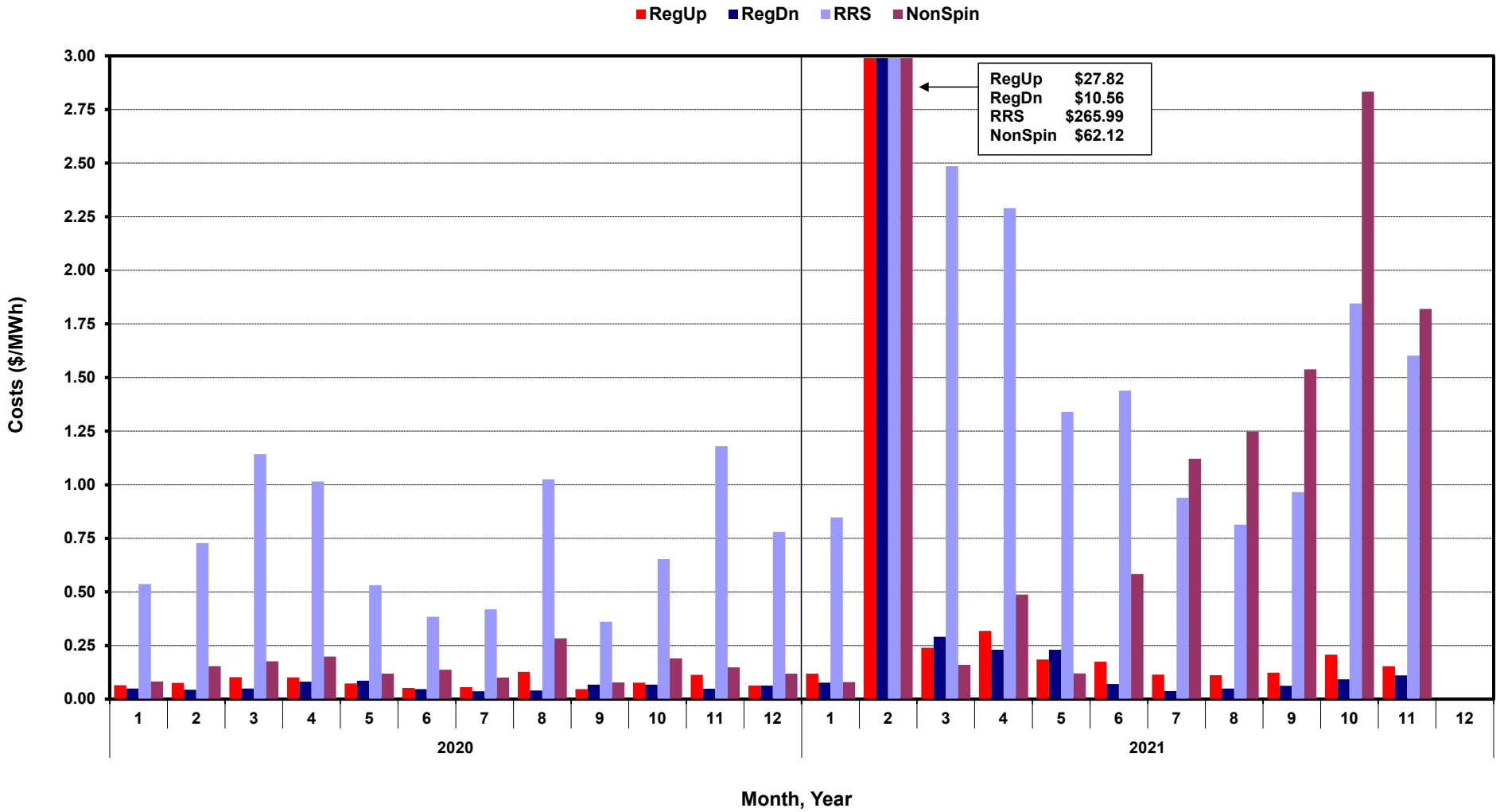
[Home <<](#)

[previous <<](#)

[next >>](#)

[data](#)

Monthly Average A/S Cost per MWh Load



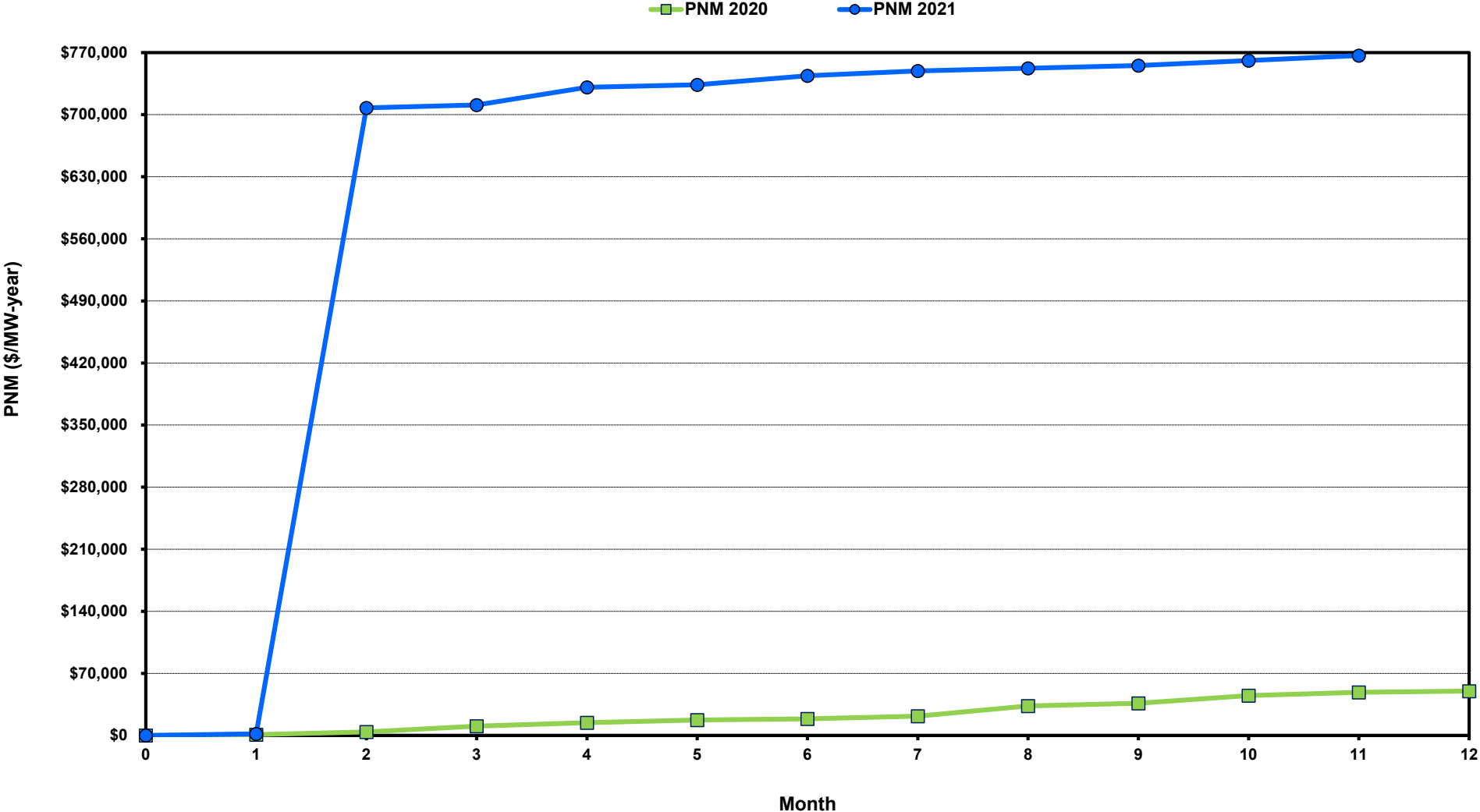
[Home <<](#)

[previous <<](#)

[next >>](#)

[data](#)

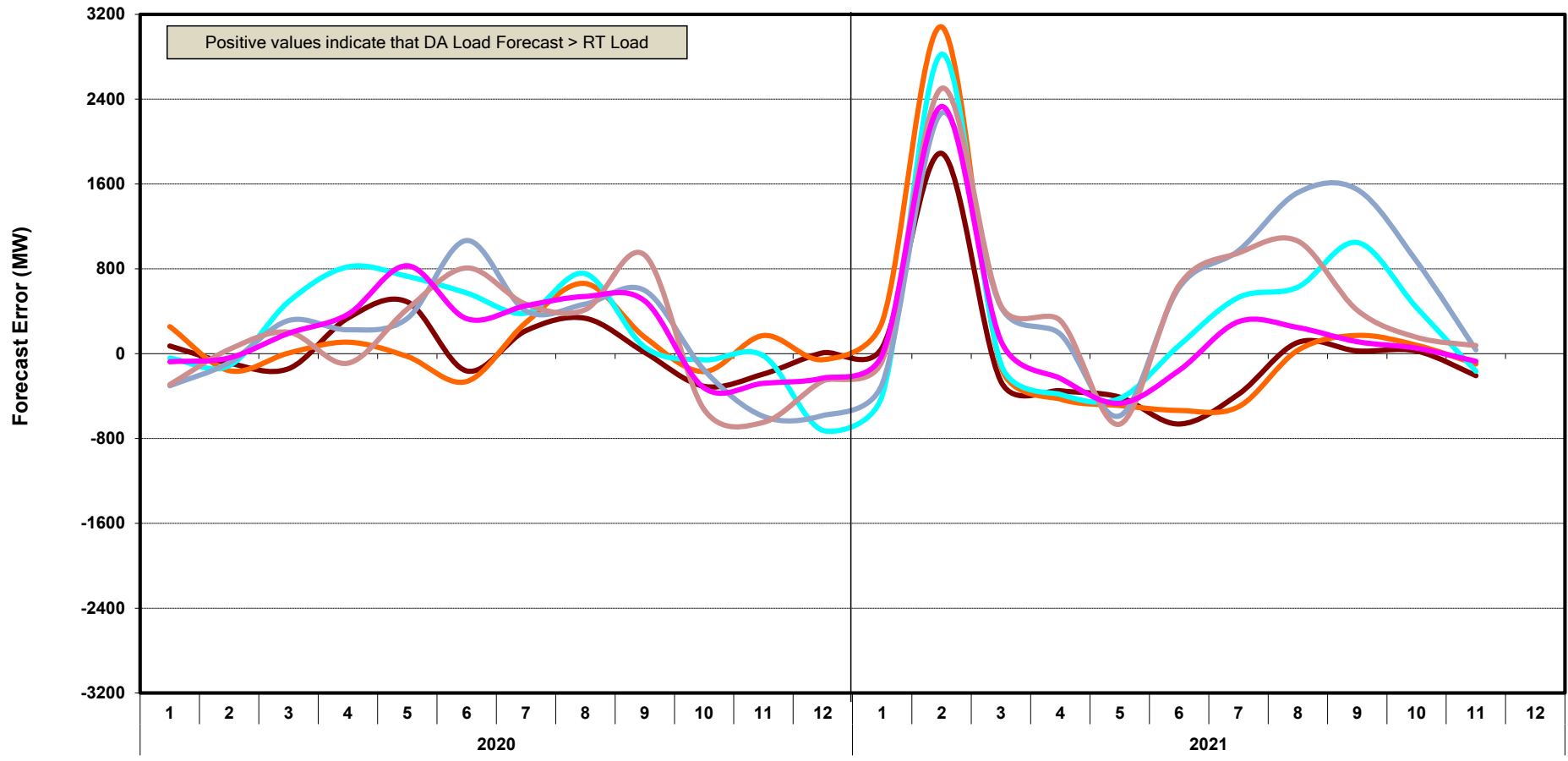
ERCOT-wide Cumulative Peaker Net Margin



[Home <<](#) [previous <<](#) [next >>](#)
[data](#)

DA vs. RT Load Forecast Error by Hour Ending

HE_1_4 HE_5_8 HE_9_12 HE_13_16 HE_17_20 HE_21_24



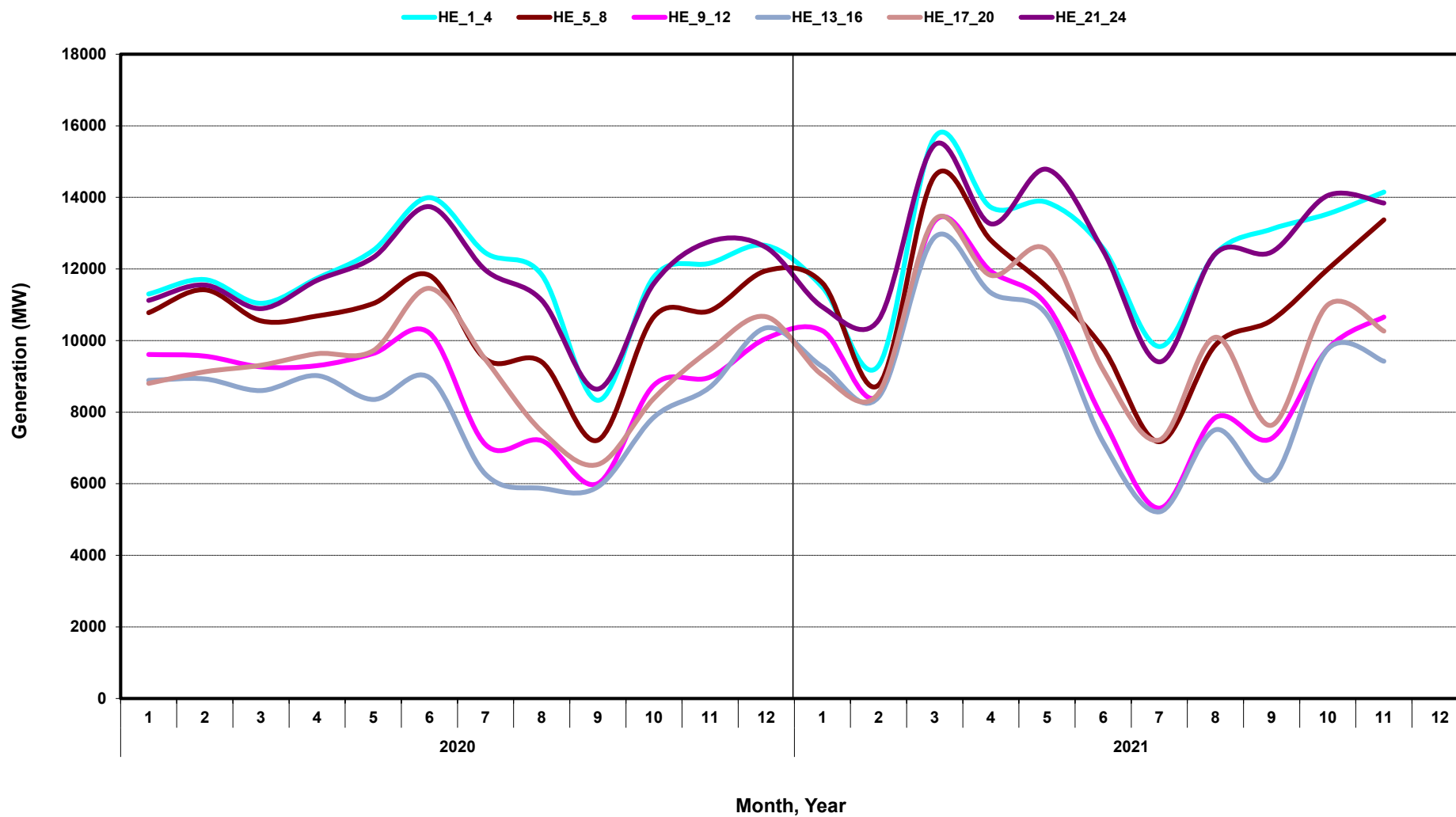
[Home <<](#)

[previous <<](#)

[next >>](#)

[data](#)

Monthly Average of Wind Generation by Hour Ending



[Home <<](#)

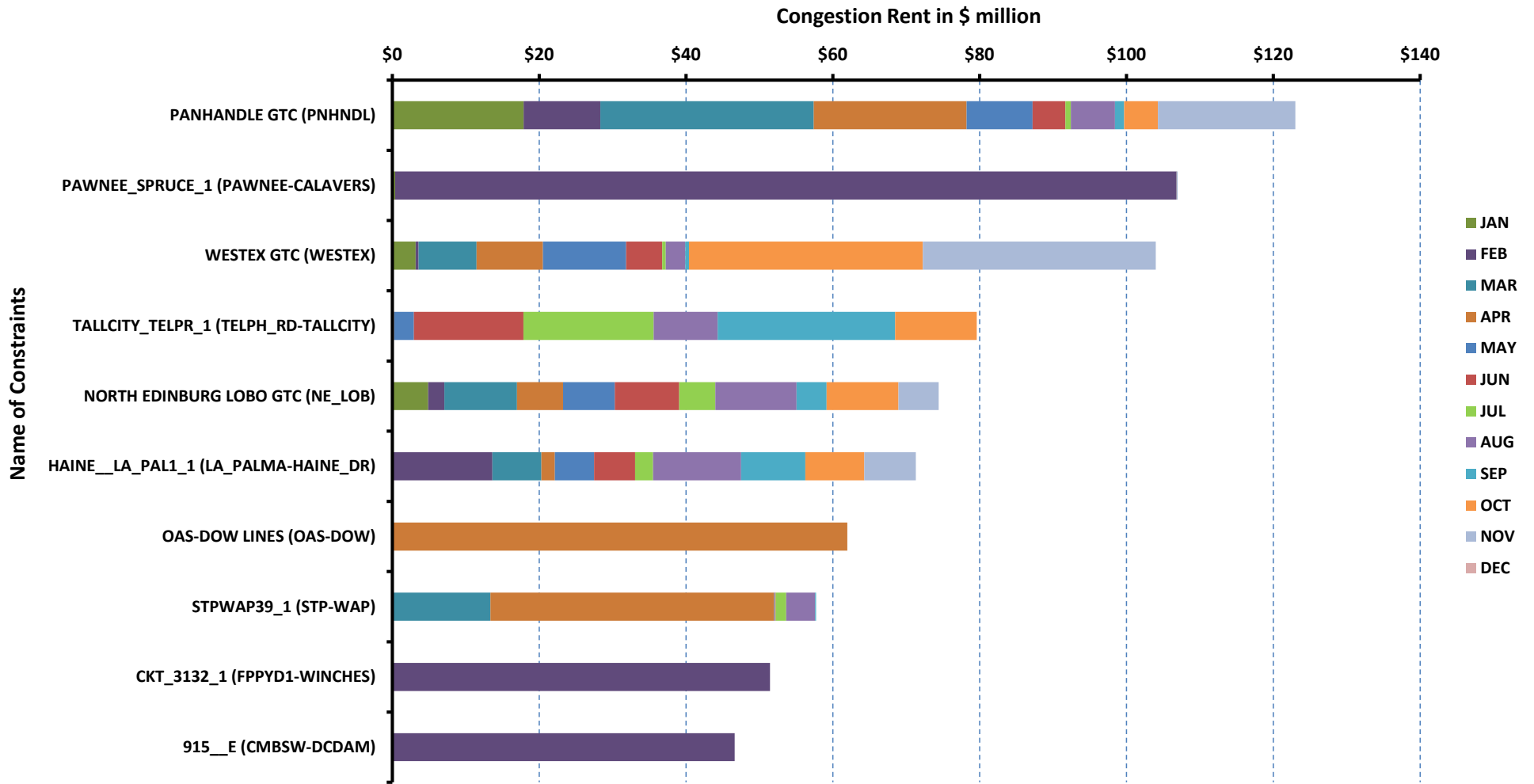
[previous <<](#)

[next >>](#)

[data](#)

RT Congestion Constraint Rankings - 1

Top 10 Constraints by Total Congestion Value - 2021



[Home <<](#)

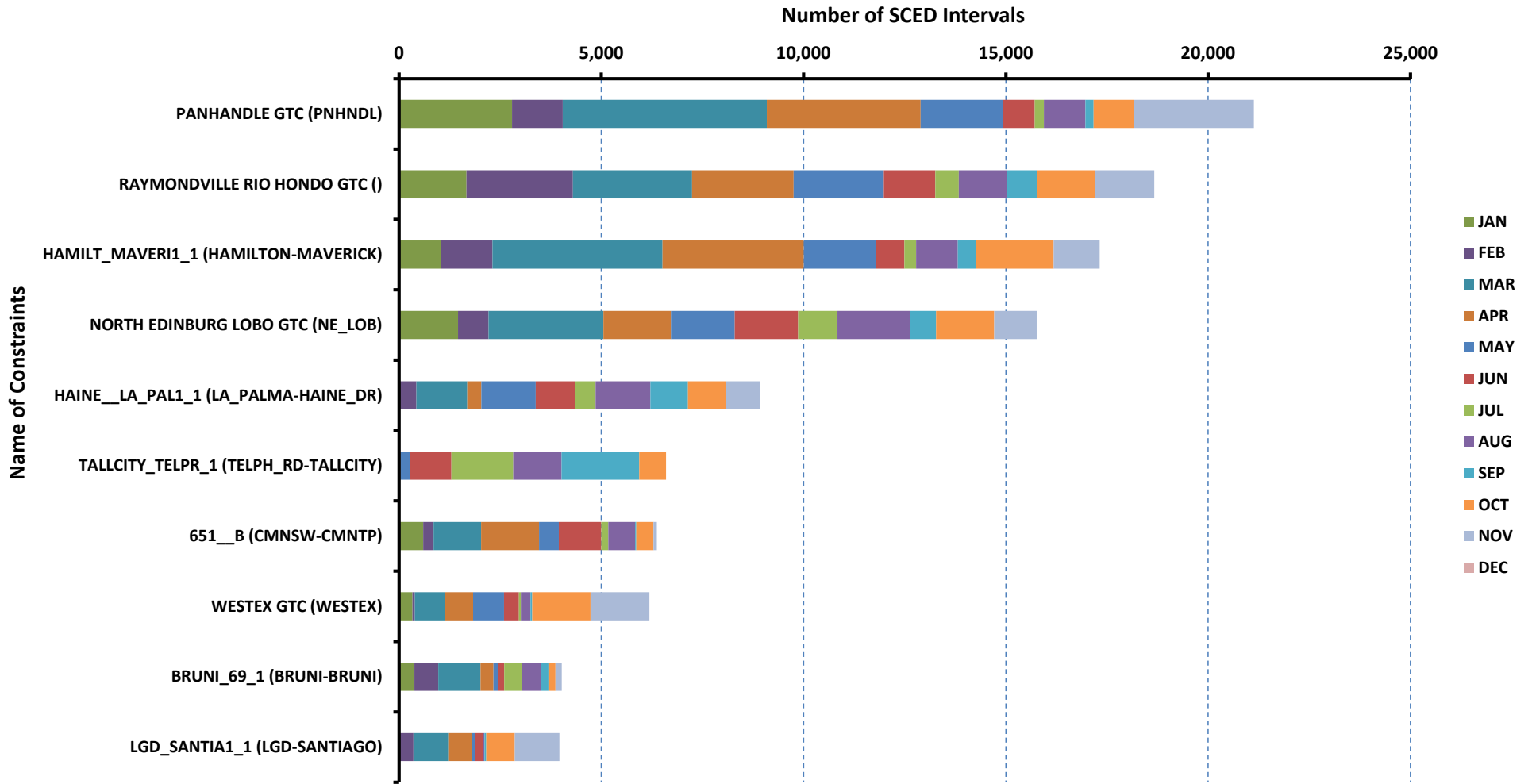
[previous <<](#)

[next >>](#)

[data](#)

RT Congestion Constraint Rankings - 2

Top 10 Constraints by Binding Frequency - 2021



[Home <<](#)

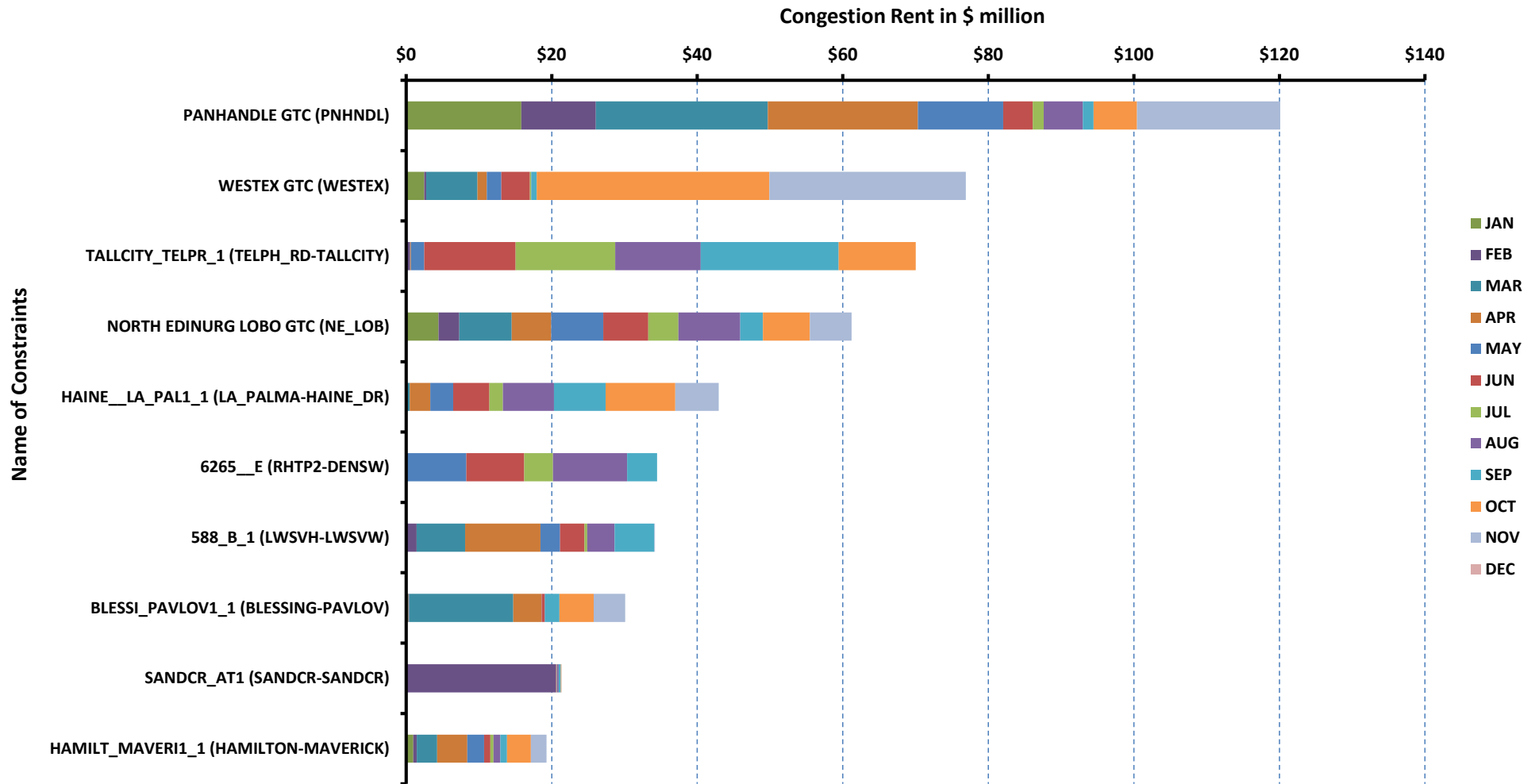
[previous <<](#)

[next >>](#)

[data](#)

DA Congestion Constraint Rankings - 1

Top 10 Constraints by Total Congestion Value - 2021



[Home <<](#)

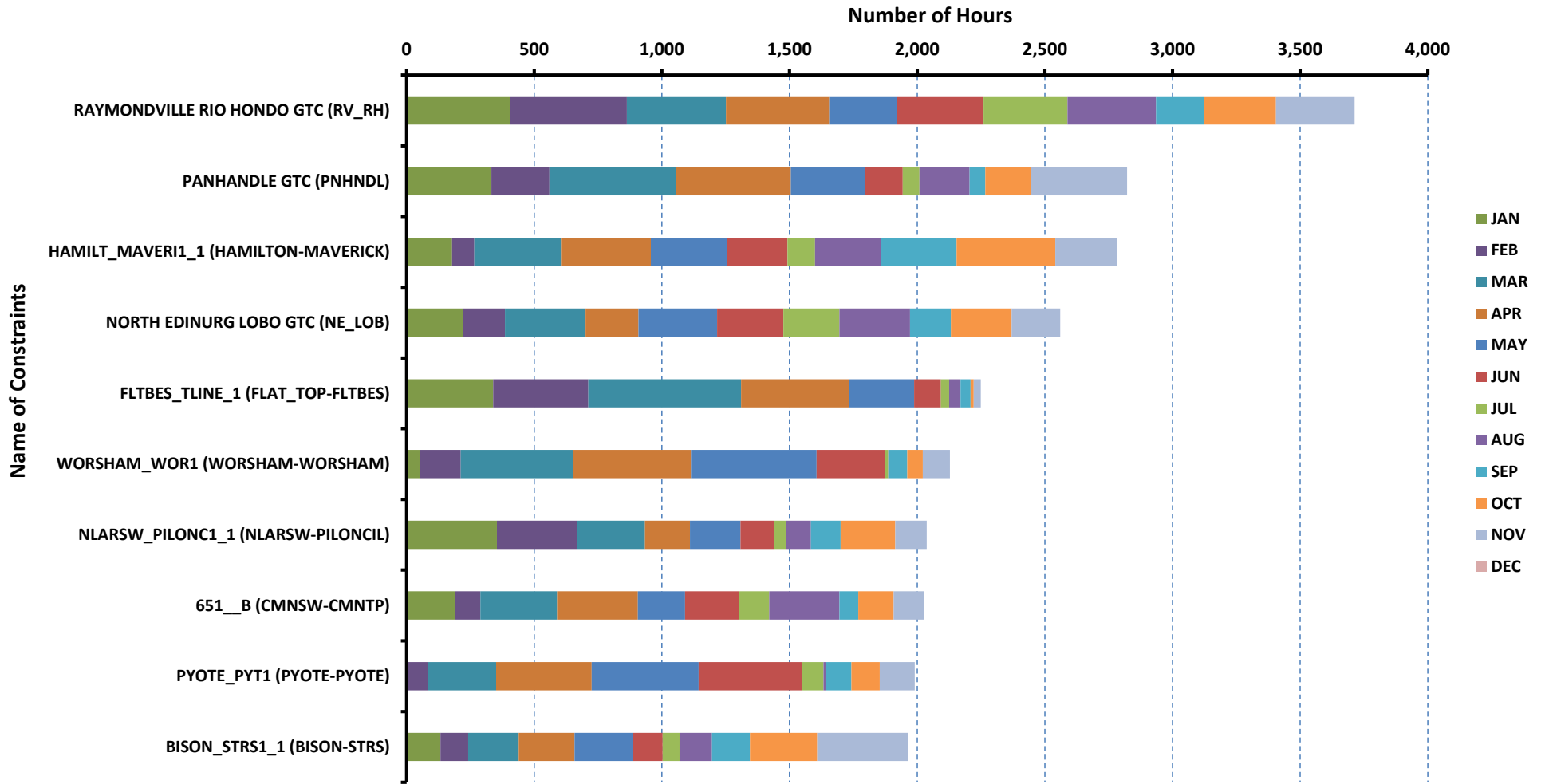
[previous <<](#)

[next >>](#)

[data](#)

DA Congestion Constraint Rankings - 2

Top 10 Constraints by Binding Frequency - 2021



[Home <<](#)

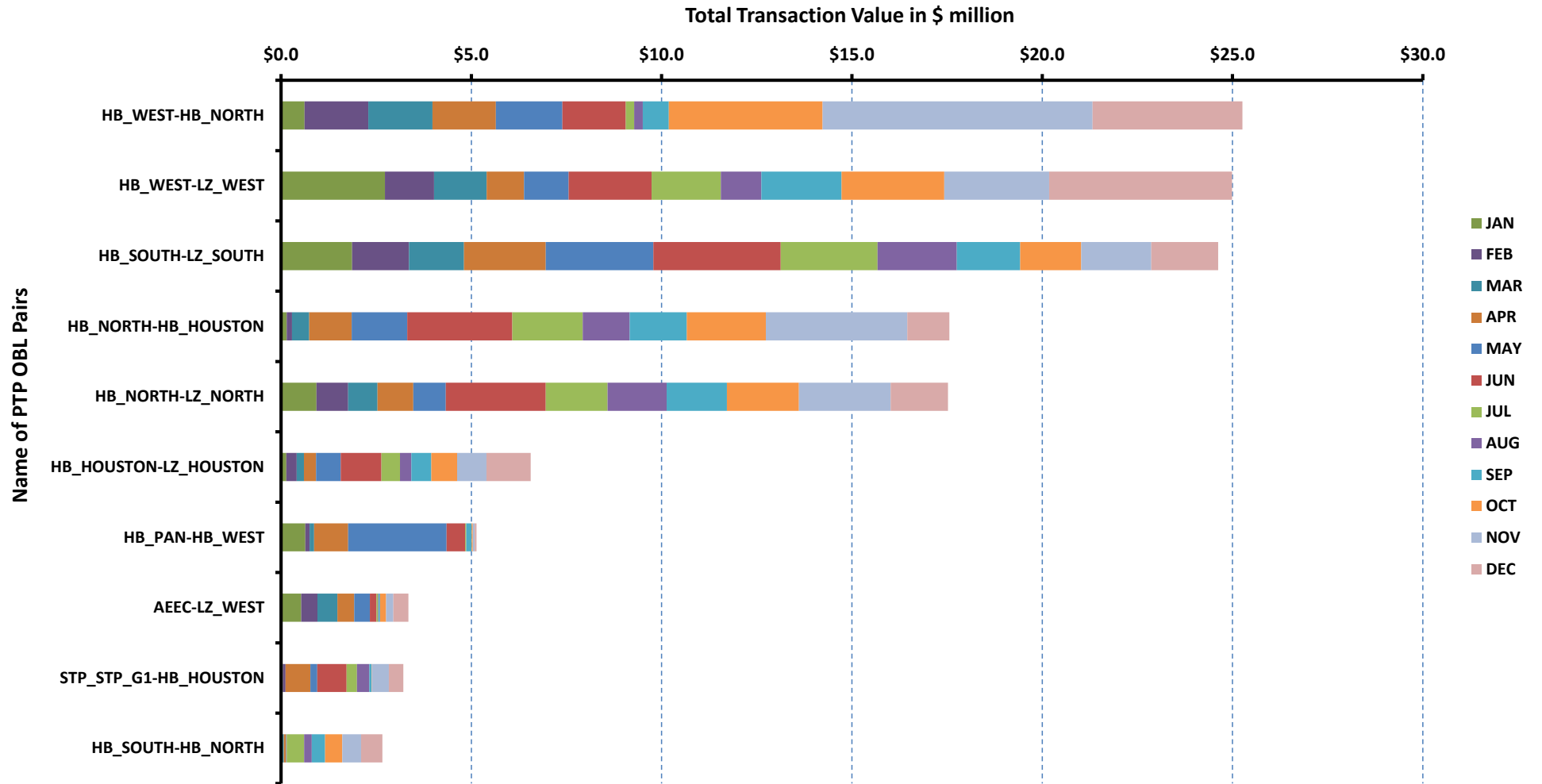
[previous <<](#)

[next >>](#)

[data](#)

Top 10 CRR Pairs Ranked by Monthly Auction Values - 1

Top 10 PTP Obligations by Total Transaction Value - 2021



[Home <<](#)

[previous <<](#)

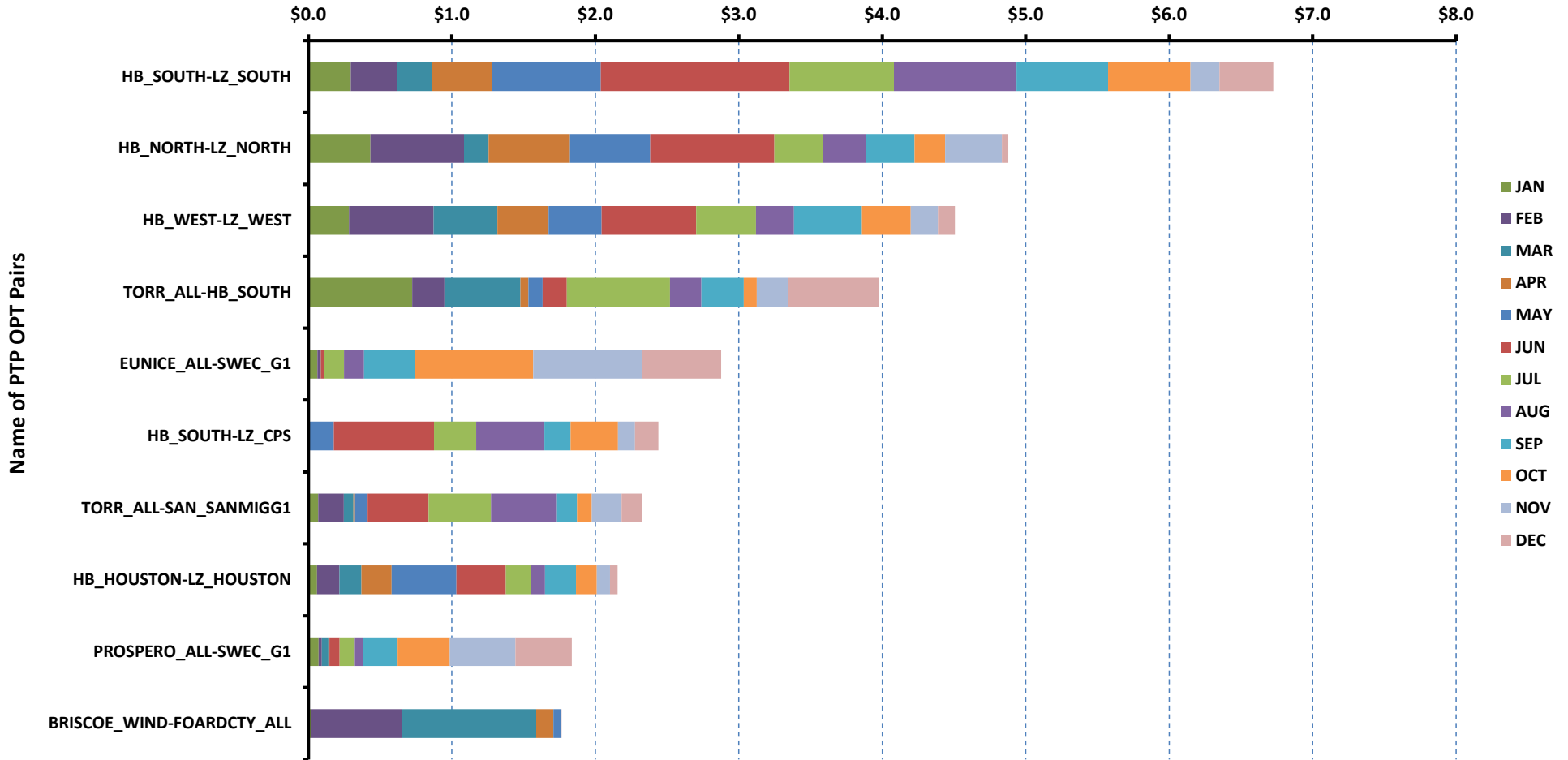
[next >>](#)

[data](#)

Top 10 CRR Pairs Ranked by Monthly Auction Values - 2

Top 10 PTP Options by Total Transaction Value - 2021

Total Transaction Value in \$ million



[Home <<](#)

[previous <<](#)

[next >>](#)

[data](#)

ERCOT-wide Avg. Energy Price - DA vs. RT			
year	month	dam_spp	rtm_spp
2020	1	\$ 18.46	\$ 17.97
	2	\$ 23.69	\$ 26.12
	3	\$ 30.87	\$ 31.87
	4	\$ 22.89	\$ 21.06
	5	\$ 20.92	\$ 20.72
	6	\$ 21.18	\$ 16.13
	7	\$ 25.72	\$ 21.79
	8	\$ 50.64	\$ 43.72
	9	\$ 20.93	\$ 23.32
	10	\$ 27.12	\$ 34.39
	11	\$ 26.47	\$ 26.86
	12	\$ 22.37	\$ 21.38
2021	1	\$ 22.60	\$ 21.96
	2	\$ 1,723.84	\$ 1,784.27
	3	\$ 22.49	\$ 22.33
	4	\$ 33.56	\$ 56.73
	5	\$ 27.60	\$ 25.76
	6	\$ 48.37	\$ 44.48
	7	\$ 45.89	\$ 40.84
	8	\$ 44.50	\$ 38.22
	9	\$ 48.96	\$ 46.18
	10	\$ 58.02	\$ 52.95
	11	\$ 41.42	\$ 43.57
	12	\$ -	\$ -

[Home <<](#)

[previous <<](#)

[next >>](#)

[chart](#)

Load Zone Load Statistics										
year	month	loadPEAK_Houston	loadPEAK_North	loadPEAK_South	loadPEAK_West	loadAVG_Houston	loadAVG_North	loadAVG_South	loadAVG_West	
2020	1	12,102	19,145	13,311	5,996	9,945	14,023	9,781	5,288	
	2	12,763	22,127	15,953	6,150	10,077	14,586	10,236	5,351	
	3	15,886	17,173	14,820	5,684	10,786	12,298	9,908	4,982	
	4	15,909	19,521	16,210	5,750	10,385	12,167	10,063	4,840	
	5	17,827	23,337	18,047	5,895	11,875	13,891	11,624	4,655	
	6	18,953	25,649	19,077	6,485	13,351	17,610	13,092	5,293	
	7	19,545	28,378	20,240	6,826	14,207	19,609	14,644	5,736	
	8	19,732	28,793	20,448	6,809	14,569	19,780	14,786	5,765	
	9	19,778	23,832	19,355	6,516	13,144	15,129	12,102	5,164	
	10	17,911	22,168	17,330	6,027	11,965	13,695	11,390	4,976	
	11	15,058	18,800	13,503	5,495	10,743	12,411	9,901	4,860	
	12	13,333	21,525	15,283	5,961	10,584	14,545	10,421	5,191	
2021	1	14,285	21,804	16,813	5,924	10,650	14,885	10,632	5,265	
	2	14,393	29,497	21,142	6,279	9,982	16,969	11,655	4,692	
	3	13,194	17,035	13,265	5,597	10,101	12,283	9,471	4,923	
	4	15,653	17,449	16,229	5,924	11,115	12,312	10,472	5,113	
	5	17,861	22,391	17,715	6,419	12,431	13,469	11,569	5,254	
	6	19,450	26,129	19,125	7,209	14,571	17,722	13,609	5,964	
	7	19,775	27,865	18,906	7,221	14,673	18,816	13,657	6,049	
	8	20,222	27,722	19,824	7,369	15,324	19,440	14,636	6,237	
	9	19,834	28,103	19,739	7,300	13,591	17,430	13,661	6,090	
	10	17,723	22,382	17,357	6,903	12,295	14,195	11,787	5,627	
	11	14,135	16,410	13,341	6,121	10,633	12,677	9,941	5,561	
	12	-	-	-	-	-	-	-	-	-

[Home <<](#)

[previous <<](#)

[next >>](#)

[chart](#)

Load Zone Monthly Average Energy Price - DA vs. RT									
year	month	avgRTMp_Houston	avgRTMp_North	avgRTMp_South	avgRTMp_West	avgDAMp_Houston	avgDAMp_North	avgDAMp_South	avgDAMp_West
2020	1	\$ 16.65	\$ 17.03	\$ 17.27	\$ 24.25	\$ 17.48	\$ 17.57	\$ 17.87	\$ 23.75
	2	\$ 18.94	\$ 18.97	\$ 19.71	\$ 71.42	\$ 18.21	\$ 18.85	\$ 20.04	\$ 54.21
	3	\$ 27.03	\$ 26.02	\$ 25.72	\$ 69.03	\$ 25.88	\$ 24.94	\$ 25.51	\$ 66.94
	4	\$ 21.29	\$ 20.43	\$ 22.73	\$ 18.66	\$ 22.63	\$ 22.34	\$ 23.83	\$ 22.87
	5	\$ 23.27	\$ 18.12	\$ 23.42	\$ 15.20	\$ 21.41	\$ 20.28	\$ 21.50	\$ 20.11
	6	\$ 16.54	\$ 16.38	\$ 15.76	\$ 15.14	\$ 21.42	\$ 21.57	\$ 21.07	\$ 19.50
	7	\$ 21.44	\$ 21.40	\$ 23.62	\$ 19.29	\$ 26.21	\$ 25.76	\$ 25.93	\$ 23.82
	8	\$ 39.86	\$ 41.02	\$ 54.24	\$ 35.79	\$ 46.46	\$ 48.10	\$ 61.57	\$ 41.90
	9	\$ 22.80	\$ 22.72	\$ 25.43	\$ 21.43	\$ 21.48	\$ 20.45	\$ 20.95	\$ 20.85
	10	\$ 34.02	\$ 35.34	\$ 35.30	\$ 30.58	\$ 26.86	\$ 25.90	\$ 29.79	\$ 24.97
	11	\$ 27.19	\$ 24.78	\$ 25.28	\$ 34.71	\$ 26.49	\$ 24.88	\$ 26.78	\$ 29.86
	12	\$ 20.61	\$ 21.08	\$ 21.24	\$ 24.02	\$ 21.50	\$ 21.74	\$ 22.33	\$ 25.99
2021	1	\$ 21.23	\$ 21.92	\$ 23.45	\$ 20.58	\$ 21.92	\$ 22.57	\$ 23.90	\$ 21.47
	2	\$ 1,444.49	\$ 2,006.93	\$ 2,010.29	\$ 1,140.39	\$ 1,419.05	\$ 1,927.34	\$ 1,942.62	\$ 1,092.81
	3	\$ 27.22	\$ 20.85	\$ 22.09	\$ 16.44	\$ 27.64	\$ 21.77	\$ 20.15	\$ 18.25
	4	\$ 76.32	\$ 50.81	\$ 51.13	\$ 39.84	\$ 36.88	\$ 32.06	\$ 34.79	\$ 27.42
	5	\$ 26.40	\$ 26.73	\$ 26.13	\$ 20.95	\$ 32.20	\$ 26.20	\$ 26.74	\$ 22.18
	6	\$ 44.10	\$ 46.25	\$ 44.53	\$ 40.10	\$ 48.43	\$ 50.13	\$ 48.12	\$ 43.59
	7	\$ 39.37	\$ 43.28	\$ 39.32	\$ 40.21	\$ 45.37	\$ 47.25	\$ 45.41	\$ 44.03
	8	\$ 38.44	\$ 39.23	\$ 37.81	\$ 35.47	\$ 44.70	\$ 46.19	\$ 43.42	\$ 41.25
	9	\$ 47.87	\$ 46.31	\$ 44.96	\$ 44.71	\$ 49.28	\$ 49.69	\$ 48.74	\$ 46.68
	10	\$ 56.37	\$ 52.90	\$ 54.67	\$ 41.98	\$ 61.23	\$ 58.79	\$ 59.37	\$ 46.22
	11	\$ 46.65	\$ 43.07	\$ 42.53	\$ 40.65	\$ 43.70	\$ 40.97	\$ 40.54	\$ 39.66
	12	\$ -	\$ -	\$ -	\$ -	\$ -	\$ -	\$ -	\$ -

[Home <<](#)

[previous <<](#)

[next >>](#)

[chart](#)

ERCOT-wide Monthly Implied Heat Rate - DA vs. RT						
year	month	gasprice	rtm_spp	HR_rtm	dam_spp	HR_dam
2020	1	\$ 1.92	\$ 17.97	9.34	\$ 18.46	9.59
	2	\$ 1.83	\$ 26.12	14.25	\$ 23.69	12.92
	3	\$ 1.68	\$ 31.87	18.98	\$ 30.87	18.38
	4	\$ 1.65	\$ 21.06	12.73	\$ 22.89	13.84
	5	\$ 1.70	\$ 20.72	12.19	\$ 20.92	12.31
	6	\$ 1.57	\$ 16.13	10.30	\$ 21.18	13.52
	7	\$ 1.70	\$ 21.79	12.78	\$ 25.72	15.09
	8	\$ 2.23	\$ 43.72	19.60	\$ 50.64	22.70
	9	\$ 2.01	\$ 23.32	11.58	\$ 20.93	10.39
	10	\$ 2.44	\$ 34.39	14.12	\$ 27.12	11.13
	11	\$ 2.58	\$ 26.86	10.40	\$ 26.47	10.25
	12	\$ 2.55	\$ 21.38	8.38	\$ 22.37	8.77
2021	1	\$ 2.57	\$ 21.96	8.53	\$ 22.60	8.78
	2	\$ 51.48	\$ 1,784.27	34.66	\$ 1,723.84	33.49
	3	\$ 2.44	\$ 22.33	9.14	\$ 22.49	9.21
	4	\$ 2.61	\$ 56.73	21.74	\$ 33.56	12.86
	5	\$ 2.87	\$ 25.76	8.96	\$ 27.60	9.60
	6	\$ 3.17	\$ 44.48	14.04	\$ 48.37	15.27
	7	\$ 3.71	\$ 40.84	11.00	\$ 45.89	12.36
	8	\$ 3.98	\$ 38.22	9.60	\$ 44.50	11.18
	9	\$ 4.92	\$ 46.18	9.38	\$ 48.96	9.95
	10	\$ 5.29	\$ 52.95	10.02	\$ 58.02	10.97
	11	\$ 4.81	\$ 43.57	9.07	\$ 41.42	8.62
	12	\$ -	\$ -	-	\$ -	-

[Home <<](#)

[previous <<](#)

[next >>](#)

[chart](#)

Load Zone Monthly Implied Heat Rate - DA vs. RT									
year	month	HRdam_Houston	HRdam_South	HRdam_North	HRdam_West	HRrtm_Houston	HRrtm_South	HRrtm_North	HRrtm_West
2020	1	9.08	9.29	9.13	12.34	8.65	8.98	8.85	12.60
	2	9.93	10.93	10.28	29.56	10.33	10.75	10.35	38.95
	3	15.41	15.19	14.85	39.87	16.10	15.32	15.49	41.11
	4	13.68	14.40	13.50	13.83	12.87	13.74	12.35	11.28
	5	12.59	12.65	11.93	11.83	13.69	13.78	10.66	8.94
	6	13.68	13.45	13.78	12.45	10.56	10.06	10.46	9.67
	7	15.38	15.21	15.11	13.98	12.58	13.86	12.56	11.32
	8	20.82	27.60	21.56	18.78	17.86	24.31	18.39	16.04
	9	10.66	10.40	10.16	10.35	11.32	12.62	11.28	10.64
	10	11.03	12.23	10.63	10.25	13.97	14.49	14.51	12.55
	11	10.26	10.37	9.63	11.56	10.53	9.79	9.59	13.44
	12	8.43	8.75	8.52	10.19	8.08	8.32	8.26	9.42
2021	1	8.52	9.29	8.77	8.34	8.25	9.11	8.52	8.00
	2	27.57	37.74	37.44	21.23	28.06	39.05	38.99	22.15
	3	11.32	8.25	8.91	7.47	11.14	9.04	8.53	6.73
	4	14.14	13.33	12.29	10.51	29.25	19.60	19.48	15.27
	5	11.21	9.30	9.12	7.72	9.19	9.09	9.30	7.29
	6	15.28	15.19	15.82	13.75	13.92	14.05	14.59	12.65
	7	12.22	12.23	12.73	11.86	10.61	10.59	11.66	10.83
	8	11.23	10.91	11.60	10.36	9.66	9.50	9.86	8.91
	9	10.02	9.91	10.10	9.49	9.73	9.14	9.41	9.09
	10	11.58	11.23	11.12	8.74	10.66	10.34	10.01	7.94
	11	9.10	8.44	8.53	8.25	9.71	8.85	8.96	8.46
	12	-	-	-	-	-	-	-	-

[Home <<](#)

[previous <<](#)

[next >>](#)

[chart](#)

Daily ORDC Adders Average Values and Interval Duration								
YEAR	MONTH	DAY	PRICE_RS	PRICE_RDP	RS_CNT	RDP_CNT	RS_POS	RDP_POS
2021	11	1	\$ 2.79	\$ 3.34	33	46	80	90
2021	11	2	\$ 0.49	\$ 0.90	23	12	80	90
2021	11	3	\$ -	\$ 0.51	0	18	80	90
2021	11	4	\$ -	\$ 1.03	0	76	80	90
2021	11	5	\$ -	\$ 0.79	0	75	80	90
2021	11	6	\$ -	\$ 1.69	0	4	80	90
2021	11	7	\$ -	\$ -	0	0	80	90
2021	11	8	\$ -	\$ -	0	0	80	90
2021	11	9	\$ 1.36	\$ 25.42	7	14	80	90
2021	11	10	\$ 0.02	\$ 4.52	2	12	80	90
2021	11	11	\$ -	\$ -	0	0	80	90
2021	11	12	\$ -	\$ -	0	0	80	90
2021	11	13	\$ 0.02	\$ -	2	0	80	90
2021	11	14	\$ 0.04	\$ -	5	0	80	90
2021	11	15	\$ 0.02	\$ -	4	0	80	90
2021	11	16	\$ -	\$ -	0	0	80	90
2021	11	17	\$ -	\$ -	0	0	80	90
2021	11	18	\$ -	\$ -	0	0	80	90
2021	11	19	\$ -	\$ -	0	0	80	90
2021	11	20	\$ 0.03	\$ -	4	0	80	90
2021	11	21	\$ -	\$ -	0	0	80	90
2021	11	22	\$ -	\$ -	0	0	80	90
2021	11	23	\$ -	\$ -	0	0	80	90
2021	11	24	\$ -	\$ -	0	0	80	90
2021	11	25	\$ -	\$ -	0	0	80	90
2021	11	26	\$ -	\$ -	0	0	80	90
2021	11	27	\$ -	\$ -	0	0	80	90
2021	11	28	\$ 0.09	\$ -	9	0	80	90
2021	11	29	\$ 0.25	\$ -	7	0	80	90
2021	11	30	\$ 0.01	\$ -	1	0	80	90
0	0	0	\$ -	\$ -	0	0	0	0

[Home <<](#)

[previous <<](#)

[next >>](#)

[chart](#)

Monthly Average of Ancillary Services Required MW					
year	month	ASMW_REGDN	ASMW_NSPIN	ASMW_RRS	ASMW_REGUP
2020	1	271	1,565	2,893	293
	2	276	1,633	2,911	295
	3	293	1,462	2,969	298
	4	282	1,444	2,976	310
	5	314	1,492	2,667	339
	6	302	1,444	2,460	324
	7	294	1,321	2,373	304
	8	301	1,414	2,354	311
	9	304	1,387	2,470	307
	10	277	1,460	2,799	300
	11	259	1,463	2,939	284
	12	266	1,535	2,881	272
2021	1	317	1,535	2,964	345
	2	360	1,604	3,024	374
	3	373	1,500	3,023	374
	4	362	1,531	3,059	391
	5	382	1,481	2,794	403
	6	327	1,527	2,548	343
	7	300	2,858	2,508	306
	8	322	3,835	2,530	328
	9	318	4,910	2,665	321
	10	318	4,880	2,908	330
	11	290	4,911	3,067	299
	12	-	-	-	-

[Home <<](#)

[previous <<](#)

[next >>](#)

[chart](#)

Hourly Average of Ancillary Services Required MW					
year	DELIVERY_HOUR	ASMW_REGDN	ASMW_NSPIN	ASMW_RRS	ASMW_REGUP
2020	1	360	1,175	2,825	217
	2	272	1,175	2,825	189
	3	232	1,370	2,831	199
	4	187	1,369	2,832	226
	5	187	1,369	2,832	293
	6	266	1,369	2,832	452
	7	230	1,838	2,733	578
	8	233	1,838	2,733	360
	9	248	1,838	2,733	363
	10	265	1,838	2,733	386
	11	271	1,608	2,654	397
	12	239	1,608	2,654	396
	13	218	1,608	2,654	367
	14	241	1,608	2,654	321
	15	222	1,392	2,634	288
	16	204	1,392	2,634	279
	17	235	1,392	2,634	288
	18	285	1,392	2,634	312
	19	366	1,423	2,663	277
	20	360	1,423	2,663	249
	21	371	1,423	2,663	212
	22	454	1,423	2,663	197
	23	488	1,175	2,825	211
	24	445	1,175	2,825	219
2021	1	369	2,635	2,891	213
	2	284	2,648	2,891	195
	3	241	2,722	2,928	210
	4	203	2,703	2,929	233
	5	199	2,679	2,929	291
	6	255	2,621	2,929	430
	7	221	2,939	2,810	544
	8	259	3,000	2,810	356
	9	350	2,977	2,810	367
	10	384	2,951	2,810	442
	11	355	2,798	2,701	485
	12	325	2,802	2,701	490
	13	304	2,810	2,701	472
	14	345	2,836	2,732	430
	15	329	2,727	2,796	411
	16	317	2,747	2,796	405
	17	343	2,749	2,796	412
	18	368	2,754	2,796	435
	19	413	2,836	2,820	375
	20	366	2,854	2,820	286
	21	387	2,866	2,820	232
	22	466	2,889	2,788	210
	23	483	2,640	2,891	205
	24	439	2,646	2,891	187

[Home <<](#)

[previous <<](#)

[next >>](#)

[chart](#)

Monthly Average Ancillary Services Price					
year	month	MCPC_REGDN	MCPC_NSPIIN	MCPC_RRS	MCPC_REGUP
2020	1	\$ 7.06	\$ 2.04	\$ 7.24	\$ 8.60
	2	\$ 6.46	\$ 3.78	\$ 10.06	\$ 10.33
	3	\$ 6.39	\$ 4.59	\$ 14.60	\$ 13.00
	4	\$ 10.83	\$ 5.15	\$ 12.78	\$ 12.31
	5	\$ 11.54	\$ 3.36	\$ 8.37	\$ 9.04
	6	\$ 7.57	\$ 4.69	\$ 7.70	\$ 7.89
	7	\$ 6.73	\$ 4.12	\$ 9.56	\$ 9.98
	8	\$ 7.32	\$ 11.02	\$ 23.91	\$ 22.42
	9	\$ 10.12	\$ 2.55	\$ 6.66	\$ 6.91
	10	\$ 10.22	\$ 5.47	\$ 9.81	\$ 10.82
	11	\$ 7.10	\$ 3.84	\$ 15.21	\$ 15.10
	12	\$ 9.71	\$ 3.16	\$ 11.03	\$ 9.49
2021	1	\$ 9.98	\$ 2.16	\$ 11.85	\$ 14.31
	2	\$ 1,272.06	\$ 1,676.26	\$ 3,808.44	\$ 3,218.92
	3	\$ 28.66	\$ 3.93	\$ 30.23	\$ 23.61
	4	\$ 24.82	\$ 12.43	\$ 29.20	\$ 31.78
	5	\$ 25.78	\$ 3.45	\$ 20.49	\$ 19.60
	6	\$ 11.14	\$ 19.82	\$ 29.28	\$ 26.37
	7	\$ 6.66	\$ 20.88	\$ 19.92	\$ 19.94
	8	\$ 8.53	\$ 18.12	\$ 17.90	\$ 18.91
	9	\$ 9.89	\$ 15.91	\$ 18.39	\$ 19.54
	10	\$ 12.69	\$ 25.49	\$ 27.86	\$ 27.63
	11	\$ 14.74	\$ 14.39	\$ 20.28	\$ 19.93
	12	\$ -	\$ -	\$ -	\$ -

[Home <<](#)

[previous <<](#)

[next >>](#)

[chart](#)

Monthly Average A/S Cost per MWh Load					
year	month	AScost_REGDN	AScost_NSPIIN	AScost_RRS	AScost_REGUP
2020	1	\$ 0.05	\$ 0.08	\$ 0.54	\$ 0.06
	2	\$ 0.04	\$ 0.15	\$ 0.73	\$ 0.08
	3	\$ 0.05	\$ 0.18	\$ 1.14	\$ 0.10
	4	\$ 0.08	\$ 0.20	\$ 1.02	\$ 0.10
	5	\$ 0.09	\$ 0.12	\$ 0.53	\$ 0.07
	6	\$ 0.05	\$ 0.14	\$ 0.38	\$ 0.05
	7	\$ 0.04	\$ 0.10	\$ 0.42	\$ 0.06
	8	\$ 0.04	\$ 0.28	\$ 1.03	\$ 0.13
	9	\$ 0.07	\$ 0.08	\$ 0.36	\$ 0.05
	10	\$ 0.07	\$ 0.19	\$ 0.65	\$ 0.08
	11	\$ 0.05	\$ 0.15	\$ 1.18	\$ 0.11
	12	\$ 0.06	\$ 0.12	\$ 0.78	\$ 0.06
2021	1	\$ 0.08	\$ 0.08	\$ 0.85	\$ 0.12
	2	\$ 10.56	\$ 62.11	\$ 265.95	\$ 27.81
	3	\$ 0.29	\$ 0.16	\$ 2.49	\$ 0.24
	4	\$ 0.23	\$ 0.49	\$ 2.29	\$ 0.32
	5	\$ 0.23	\$ 0.12	\$ 1.34	\$ 0.18
	6	\$ 0.07	\$ 0.58	\$ 1.44	\$ 0.17
	7	\$ 0.04	\$ 1.12	\$ 0.94	\$ 0.11
	8	\$ 0.05	\$ 1.25	\$ 0.81	\$ 0.11
	9	\$ 0.06	\$ 1.54	\$ 0.97	\$ 0.12
	10	\$ 0.09	\$ 2.83	\$ 1.85	\$ 0.21
	11	\$ 0.11	\$ 1.82	\$ 1.60	\$ 0.15
	12	\$ -	\$ -	\$ -	\$ -

[Home <<](#)

[previous <<](#)

[next >>](#)

[chart](#)

ERCOT-wide Cumulative PNM			
year	month	pnm	pnm_accum
2020	0	\$ -	\$ -
	1	\$ 948.71	\$ 948.71
	2	\$ 2,962.95	\$ 3,911.66
	3	\$ 6,596.00	\$ 10,507.66
	4	\$ 3,928.31	\$ 14,435.97
	5	\$ 2,971.45	\$ 17,407.42
	6	\$ 1,257.14	\$ 18,664.56
	7	\$ 3,082.86	\$ 21,747.42
	8	\$ 11,591.85	\$ 33,339.27
	9	\$ 3,063.07	\$ 36,402.34
	10	\$ 8,681.74	\$ 45,084.08
	11	\$ 3,520.43	\$ 48,604.51
12	\$ 1,469.68	\$ 50,074.19	
2021	0	\$ -	\$ -
	1	\$ 1,930.83	\$ 1,930.83
	2	\$ 705,718.36	\$ 707,649.19
	3	\$ 3,356.50	\$ 711,005.69
	4	\$ 19,870.21	\$ 730,875.90
	5	\$ 2,917.28	\$ 733,793.18
	6	\$ 10,048.24	\$ 743,841.42
	7	\$ 5,447.42	\$ 749,288.84
	8	\$ 3,062.97	\$ 752,351.81
	9	\$ 3,075.26	\$ 755,427.07
	10	\$ 5,596.65	\$ 761,023.72
	11	\$ 5,656.41	\$ 766,680.13
12	\$ -	\$ -	

[Home <<](#)

[previous <<](#)

[next >>](#)

[chart](#)

DA vs. RT Load Forecast Error by Hour Ending							
year	month	HE_1_4	HE_13_16	HE_17_20	HE_21_24	HE_5_8	HE_9_12
2020	1	73	(303)	(292)	(76)	255	(43)
	2	(89)	(84)	40	(39)	(160)	(113)
	3	(142)	313	202	192	5	490
	4	335	225	(90)	371	108	819
	5	488	332	420	829	(26)	729
	6	(163)	1,067	808	330	(262)	573
	7	218	403	467	452	294	382
	8	333	468	415	540	662	754
	9	12	596	930	497	155	62
	10	(308)	(154)	(527)	(323)	(169)	(58)
	11	(192)	(592)	(648)	(279)	171	(20)
	12	8	(583)	(257)	(230)	(57)	(724)
2021	1	58	(284)	(66)	(9)	302	(394)
	2	1,889	2,270	2,503	2,331	3,083	2,824
	3	(263)	440	452	119	(125)	(99)
	4	(349)	184	312	(233)	(428)	(384)
	5	(410)	(586)	(665)	(468)	(489)	(422)
	6	(663)	622	645	(158)	(535)	78
	7	(383)	971	950	302	(501)	530
	8	106	1,519	1,062	247	32	627
	9	26	1,548	410	113	172	1,049
	10	25	872	154	52	80	435
	11	(208)	36	77	(72)	(98)	(166)
	12	-	-	-	-	-	-

[Home <<](#)

[previous <<](#)

[next >>](#)

[chart](#)

Monthly Average of Wind Generation by Hour Ending							
year	month	HE_1_4	HE_13_16	HE_17_20	HE_21_24	HE_5_8	HE_9_12
2020	1	11,301	8,889	8,804	11,122	10,778	9,611
	2	11,703	8,927	9,127	11,552	11,418	9,565
	3	11,041	8,603	9,310	10,892	10,550	9,266
	4	11,740	9,020	9,632	11,683	10,687	9,300
	5	12,521	8,354	9,718	12,321	11,035	9,639
	6	13,993	8,966	11,459	13,741	11,821	10,210
	7	12,451	6,263	9,467	11,967	9,483	7,091
	8	11,838	5,872	7,466	11,126	9,403	7,204
	9	8,330	5,914	6,538	8,644	7,217	6,007
	10	11,781	7,862	8,387	11,600	10,670	8,756
	11	12,163	8,702	9,740	12,769	10,835	8,979
	12	12,653	10,356	10,665	12,599	11,951	10,062
2021	1	11,491	9,270	9,037	10,939	11,606	10,274
	2	9,300	8,420	8,532	10,575	8,759	8,461
	3	15,685	12,889	13,380	15,467	14,598	13,338
	4	13,724	11,336	11,823	13,261	12,803	11,939
	5	13,861	10,718	12,533	14,784	11,494	10,984
	6	12,577	7,161	9,179	12,511	9,782	7,803
	7	9,833	5,215	7,223	9,405	7,174	5,318
	8	12,425	7,508	10,092	12,428	9,872	7,849
	9	13,114	6,136	7,634	12,472	10,567	7,265
	10	13,538	9,761	10,995	14,051	11,991	9,768
	11	14,149	9,423	10,265	13,841	13,372	10,657
	12	-	-	-	-	-	-

[Home <<](#)

[previous <<](#)

[next >>](#)

[chart](#)

RT Congestion Constraint Rankings - Top 10 Constraints by Binding Frequency and Top 10 Constraints by Total Congestion Rent																
category	year	item	rankvar	rank	JAN	FEB	MAR	APR	MAY	JUN	JUL	AUG	SEP	OCT	NOV	DEC
FREQ_EXIST	2021	PANHANDLE GTC (PNHNDL)	21,130	1	2,790	1,257	5,042	3,801	2,037	785	227	1,024	207	994	2,966	-
FREQ_EXIST	2021	RAYMONDVILLE RIO HONDO GTC ()	18,667	2	1,667	2,630	2,944	2,514	2,229	1,272	581	1,178	758	1,429	1,465	-
FREQ_EXIST	2021	HAMILT MAVERI1 1 (HAMILTON-MAVERICK)	17,319	3	1,038	1,269	4,205	3,493	1,776	711	290	1,027	443	1,929	1,138	-
FREQ_EXIST	2021	NORTH EDINBURG LOBO GTC (NE LOB)	15,759	4	1,455	758	2,837	1,671	1,575	1,568	972	1,794	646	1,435	1,048	-
FREQ_EXIST	2021	HAIN E LA PAL1 1 (LA PALMA-HAINE DR)	8,932	5	-	428	1,255	348	1,346	977	505	1,353	928	949	843	-
FREQ_EXIST	2021	TALLCITY TELPR 1 (TELPH RD-TALLCITY)	6,598	6	-	-	-	30	238	1,026	1,529	1,194	1,918	663	-	-
FREQ_EXIST	2021	651_B (CMNSW-CMNTP)	6,370	7	594	260	1,176	1,432	484	1,050	176	662	29	427	80	-
FREQ_EXIST	2021	WESTEX GTC (WESTEX)	6,187	8	332	56	739	701	766	369	46	237	43	1,444	1,454	-
FREQ_EXIST	2021	BRUNI 69 1 (BRUNI-BRUNI)	4,021	9	378	592	1,044	320	105	158	435	466	196	170	157	-
FREQ_EXIST	2021	LGD_SANTIA1 1 (LGD-SANTIAGO)	3,963	10	-	352	883	555	84	202	3	33	42	706	1,103	-
TOP10_RENT	2021	PANHANDLE GTC (PNHNDL)	\$ 122.99	1	\$ 17.87	\$ 10.46	\$ 29.06	\$ 20.83	\$ 8.98	\$ 4.48	\$ 0.74	\$ 6.02	\$ 1.25	\$ 4.60	\$ 18.71	\$ -
TOP10_RENT	2021	PAWNEE_SPRUCE 1 (PAWNEE-CALAVERS)	\$ 106.92	2	\$ 0.39	\$ 106.40	\$ -	\$ -	\$ -	\$ -	\$ 0.01	\$ 0.10	\$ 0.02	\$ -	\$ -	\$ -
TOP10_RENT	2021	WESTEX GTC (WESTEX)	\$ 103.99	3	\$ 3.17	\$ 0.41	\$ 7.90	\$ 9.03	\$ 11.33	\$ 4.93	\$ 0.46	\$ 2.66	\$ 0.50	\$ 31.86	\$ 31.73	\$ -
TOP10_RENT	2021	TALLCITY TELPR 1 (TELPH RD-TALLCITY)	\$ 79.61	4	\$ -	\$ -	\$ -	\$ 0.21	\$ 2.73	\$ 14.91	\$ 17.75	\$ 8.70	\$ 24.19	\$ 11.12	\$ -	\$ -
TOP10_RENT	2021	NORTH EDINBURG LOBO GTC (NE LOB)	\$ 74.41	5	\$ 4.89	\$ 2.20	\$ 9.90	\$ 6.26	\$ 7.04	\$ 8.77	\$ 4.93	\$ 11.06	\$ 4.08	\$ 9.79	\$ 5.48	\$ -
TOP10_RENT	2021	HAIN E LA PAL1 1 (LA PALMA-HAINE DR)	\$ 71.30	6	\$ -	\$ 13.62	\$ 6.69	\$ 1.82	\$ 5.35	\$ 5.58	\$ 2.46	\$ 11.97	\$ 8.75	\$ 8.03	\$ 7.03	\$ -
TOP10_RENT	2021	OAS-DOW LINES (OAS-DOW)	\$ 61.96	7	\$ -	\$ -	\$ -	\$ 61.96	\$ -	\$ -	\$ -	\$ -	\$ -	\$ -	\$ -	\$ -
TOP10_RENT	2021	STPWAR39 1 (STP-WAP)	\$ 57.72	8	\$ -	\$ -	\$ 13.37	\$ 38.62	\$ 0.10	\$ 0.13	\$ 1.42	\$ 3.95	\$ 0.12	\$ -	\$ -	\$ -
TOP10_RENT	2021	CKT_3132_1 (FPPYD1-WINCHES)	\$ 51.44	9	\$ -	\$ 51.44	\$ -	\$ -	\$ -	\$ -	\$ -	\$ -	\$ -	\$ -	\$ -	\$ -
TOP10_RENT	2021	915_E (CMBSW-DCDAM)	\$ 46.61	10	\$ -	\$ 46.61	\$ -	\$ -	\$ -	\$ -	\$ -	\$ -	\$ -	\$ -	\$ -	\$ -

[Home <<](#)

[previous <<](#)

[next >>](#)

[chart 1](#)

[chart 2](#)

DA Congestion Constraint Rankings - Top 10 Constraints by Binding Frequency and Top 10 Constraints by Total Congestion Rent																	
category	year	item	rankvar	rank	JAN	FEB	MAR	APR	MAY	JUN	JUL	AUG	SEP	OCT	NOV	DEC	
FREQ_EXIST	2021	RAYMONDVILLE RIO HONDO GTC (RV_RH)	3,713	1	404	459	388	404	267	338	329	346	188	282	308	-	
FREQ_EXIST	2021	PANHANDLE GTC (PNHNDL)	2,822	2	332	227	496	450	290	148	66	196	62	180	375	-	
FREQ_EXIST	2021	HAMILT MAVERI1_1 (HAMILTON-MAVERICK)	2,782	3	178	87	340	352	299	236	108	258	296	387	241	-	
FREQ_EXIST	2021	NORTH EDINURG LOBO GTC (NE_LOB)	2,560	4	220	165	316	207	308	280	219	277	160	238	190	-	
FREQ_EXIST	2021	FLTBES TLINE 1 (FLAT_TOP-FLTBES)	2,249	5	339	373	598	424	254	105	32	45	39	12	28	-	
FREQ_EXIST	2021	WORSHAM WOR1 (WORSHAM-WORSHAM)	2,128	6	51	161	440	462	492	269	11	1	74	61	106	-	
FREQ_EXIST	2021	NLARSW PILONC1_1 (NLARSW-PILONCIL)	2,037	7	354	314	266	176	198	130	49	97	116	214	123	-	
FREQ_EXIST	2021	651_B (CMNSW-CMNTP)	2,028	8	190	99	300	317	185	210	119	275	74	139	120	-	
FREQ_EXIST	2021	PYOTE PYT1 (PYOTE-PYOTE)	1,990	9	-	83	268	374	419	404	85	10	99	111	137	-	
FREQ_EXIST	2021	BISON_STRS1_1 (BISON-STRS)	1,966	10	133	108	198	219	227	118	66	127	149	263	358	-	
TOP10_RENT	2021	PANHANDLE GTC (PNHNDL)	\$ 120.12	1	\$ 15.82	\$ 10.25	\$ 23.63	\$ 20.62	\$ 11.72	\$ 4.06	\$ 1.51	\$ 5.39	\$ 1.48	\$ 5.97	\$ 19.67	\$ -	
TOP10_RENT	2021	WESTEX GTC (WESTEX)	\$ 76.91	2	\$ 2.49	\$ 0.26	\$ 7.04	\$ 1.31	\$ 1.98	\$ 3.94	\$ 0.14	\$ 0.02	\$ 0.76	\$ 31.97	\$ 27.01	\$ -	
TOP10_RENT	2021	TALLCITY_TELPR_1 (TELPH_RD-TALLCITY)	\$ 70.03	3	\$ -	\$ 0.54	\$ -	\$ 0.10	\$ 1.85	\$ 12.57	\$ 13.69	\$ 11.75	\$ 18.95	\$ 10.60	\$ -	\$ -	
TOP10_RENT	2021	NORTH EDINURG LOBO GTC (NE_LOB)	\$ 61.21	4	\$ 4.45	\$ 2.84	\$ 7.21	\$ 5.42	\$ 7.17	\$ 6.19	\$ 4.13	\$ 8.50	\$ 3.12	\$ 6.44	\$ 5.74	\$ -	
TOP10_RENT	2021	HAIN LA PAL1_1 (LA_PALMA-HAINE_DR)	\$ 42.94	5	\$ -	\$ 0.14	\$ 0.35	\$ 2.83	\$ 3.13	\$ 4.98	\$ 1.86	\$ 7.01	\$ 7.10	\$ 9.58	\$ 5.96	\$ -	
TOP10_RENT	2021	6265_E (RHTP2-DENSW)	\$ 34.48	6	\$ -	\$ -	\$ 0.01	\$ -	\$ 8.26	\$ 7.95	\$ 3.94	\$ 10.19	\$ 4.13	\$ -	\$ -	\$ -	
TOP10_RENT	2021	588_B_1 (LWSVH-LWSVW)	\$ 34.19	7	\$ -	\$ 1.42	\$ 6.69	\$ 10.35	\$ 2.70	\$ 3.36	\$ 0.36	\$ 3.76	\$ 5.45	\$ -	\$ 0.10	\$ -	
TOP10_RENT	2021	BLESSI_PAVLOV1_1 (BLESSING-PAVLOV)	\$ 30.08	8	\$ 0.31	\$ 0.09	\$ 14.32	\$ 3.86	\$ 0.02	\$ 0.41	\$ 0.00	\$ 0.03	\$ 1.99	\$ 4.70	\$ 4.33	\$ -	
TOP10_RENT	2021	SANDCR_AT1 (SANDCR-SANDCR)	\$ 21.32	9	\$ -	\$ 20.61	\$ -	\$ -	\$ -	\$ 0.05	\$ 0.04	\$ 0.25	\$ 0.31	\$ 0.06	\$ 0.00	\$ -	
TOP10_RENT	2021	HAMILT MAVERI1_1 (HAMILTON-MAVERICK)	\$ 19.28	10	\$ 0.96	\$ 0.49	\$ 2.82	\$ 4.12	\$ 2.32	\$ 0.87	\$ 0.43	\$ 0.95	\$ 0.91	\$ 3.30	\$ 2.14	\$ -	

[Home <<](#)

[previous <<](#)

[next >>](#)

[chart 1](#)

[chart 2](#)

Top 10 CRR Pairs Ranked by Monthly Auction Values - Top 10 PTP Obligations by Total Transaction Values and Top 10 PTP Options by Total Transaction Values																	
fr_option	year	pair	total_value	rank	JAN	FEB	MAR	APR	MAY	JUN	JUL	AUG	SEP	OCT	NOV	DEC	
N	2021	HB WEST-HB NORTH	\$ 25.26	1	\$ 0.62	\$ 1.68	\$ 1.69	\$ 1.67	\$ 1.75	\$ 1.67	\$ 0.22	\$ 0.23	\$ 0.68	\$ 4.04	\$ 7.09	\$ 3.94	
N	2021	HB WEST-LZ WEST	\$ 24.99	2	\$ 2.73	\$ 1.29	\$ 1.38	\$ 0.98	\$ 1.17	\$ 2.18	\$ 1.82	\$ 1.06	\$ 2.11	\$ 2.70	\$ 2.75	\$ 4.81	
N	2021	HB SOUTH-LZ SOUTH	\$ 24.62	3	\$ 1.87	\$ 1.50	\$ 1.44	\$ 2.15	\$ 2.83	\$ 3.34	\$ 2.55	\$ 2.08	\$ 1.66	\$ 1.60	\$ 1.84	\$ 1.76	
N	2021	HB NORTH-HB HOUSTON	\$ 17.56	4	\$ 0.15	\$ 0.14	\$ 0.45	\$ 1.12	\$ 1.46	\$ 2.76	\$ 1.85	\$ 1.23	\$ 1.50	\$ 2.08	\$ 3.72	\$ 1.11	
N	2021	HB NORTH-LZ NORTH	\$ 17.52	5	\$ 0.93	\$ 0.83	\$ 0.77	\$ 0.94	\$ 0.85	\$ 2.63	\$ 1.63	\$ 1.55	\$ 1.58	\$ 1.89	\$ 2.41	\$ 1.51	
N	2021	HB HOUSTON-LZ HOUSTON	\$ 6.56	6	\$ 0.14	\$ 0.27	\$ 0.19	\$ 0.32	\$ 0.65	\$ 1.07	\$ 0.49	\$ 0.30	\$ 0.52	\$ 0.68	\$ 0.77	\$ 1.16	
N	2021	HB PAN-HB WEST	\$ 5.14	7	\$ 0.64	\$ 0.11	\$ 0.12	\$ 0.89	\$ 2.59	\$ 0.49	\$ 0.03	\$ 0.01	\$ 0.14	\$ 0.03	\$ 0.05	\$ 0.05	
N	2021	AEEC-LZ WEST	\$ 3.34	8	\$ 0.53	\$ 0.42	\$ 0.52	\$ 0.44	\$ 0.41	\$ 0.17	\$ 0.04	\$ 0.01	\$ 0.04	\$ 0.16	\$ 0.19	\$ 0.39	
N	2021	STP STP G1-HB HOUSTON	\$ 3.21	9	\$ 0.05	\$ 0.07	\$ -	\$ 0.65	\$ 0.18	\$ 0.77	\$ 0.27	\$ 0.32	\$ 0.06	\$ 0.01	\$ 0.45	\$ 0.38	
N	2021	HB SOUTH-HB NORTH	\$ 2.66	10	\$ 0.00	\$ 0.01	\$ 0.06	\$ 0.06	\$ 0.02	\$ -	\$ 0.46	\$ 0.20	\$ 0.35	\$ 0.46	\$ 0.49	\$ 0.56	
Y	2021	HB SOUTH-LZ SOUTH	\$ 6.73	1	\$ 0.30	\$ 0.32	\$ 0.24	\$ 0.42	\$ 0.76	\$ 1.32	\$ 0.73	\$ 0.85	\$ 0.64	\$ 0.57	\$ 0.20	\$ 0.37	
Y	2021	HB NORTH-LZ NORTH	\$ 4.88	2	\$ 0.43	\$ 0.65	\$ 0.17	\$ 0.57	\$ 0.56	\$ 0.87	\$ 0.34	\$ 0.30	\$ 0.34	\$ 0.21	\$ 0.40	\$ 0.05	
Y	2021	HB WEST-LZ WEST	\$ 4.51	3	\$ 0.28	\$ 0.59	\$ 0.44	\$ 0.36	\$ 0.37	\$ 0.66	\$ 0.42	\$ 0.26	\$ 0.47	\$ 0.34	\$ 0.19	\$ 0.12	
Y	2021	TORR ALL-HB SOUTH	\$ 3.97	4	\$ 0.72	\$ 0.22	\$ 0.53	\$ 0.06	\$ 0.10	\$ 0.17	\$ 0.72	\$ 0.22	\$ 0.30	\$ 0.09	\$ 0.22	\$ 0.63	
Y	2021	EUNICE ALL-SWEC G1	\$ 2.88	5	\$ 0.06	\$ 0.02	\$ 0.00	\$ 0.00	\$ 0.00	\$ 0.03	\$ 0.14	\$ 0.14	\$ 0.36	\$ 0.82	\$ 0.76	\$ 0.55	
Y	2021	HB SOUTH-LZ CPS	\$ 2.44	6	\$ 0.00	\$ 0.00	\$ 0.00	\$ 0.00	\$ 0.17	\$ 0.70	\$ 0.30	\$ 0.47	\$ 0.18	\$ 0.33	\$ 0.12	\$ 0.16	
Y	2021	TORR ALL-SAN SANMIGG1	\$ 2.33	7	\$ 0.07	\$ 0.18	\$ 0.07	\$ 0.01	\$ 0.09	\$ 0.43	\$ 0.43	\$ 0.46	\$ 0.14	\$ 0.10	\$ 0.21	\$ 0.15	
Y	2021	HB HOUSTON-LZ HOUSTON	\$ 2.16	8	\$ 0.06	\$ 0.16	\$ 0.15	\$ 0.21	\$ 0.45	\$ 0.34	\$ 0.18	\$ 0.10	\$ 0.22	\$ 0.14	\$ 0.09	\$ 0.05	
Y	2021	PROSPERO ALL-SWEC G1	\$ 1.84	9	\$ 0.07	\$ 0.02	\$ 0.05	\$ 0.01	\$ 0.00	\$ 0.07	\$ 0.11	\$ 0.06	\$ 0.24	\$ 0.37	\$ 0.46	\$ 0.39	
Y	2021	BRISCOE WIND-FOARDCTY_ALL	\$ 1.76	10	\$ 0.02	\$ 0.63	\$ 0.94	\$ 0.12	\$ 0.05	\$ -	\$ -	\$ -	\$ -	\$ -	\$ -	\$ 0.00	

[Home <<](#)

[previous <<](#)

[chart 1](#)

[chart 2](#)