

To the Public Utility Commission of Texas

ERCOT Wholesale Electricity Market Monthly Report

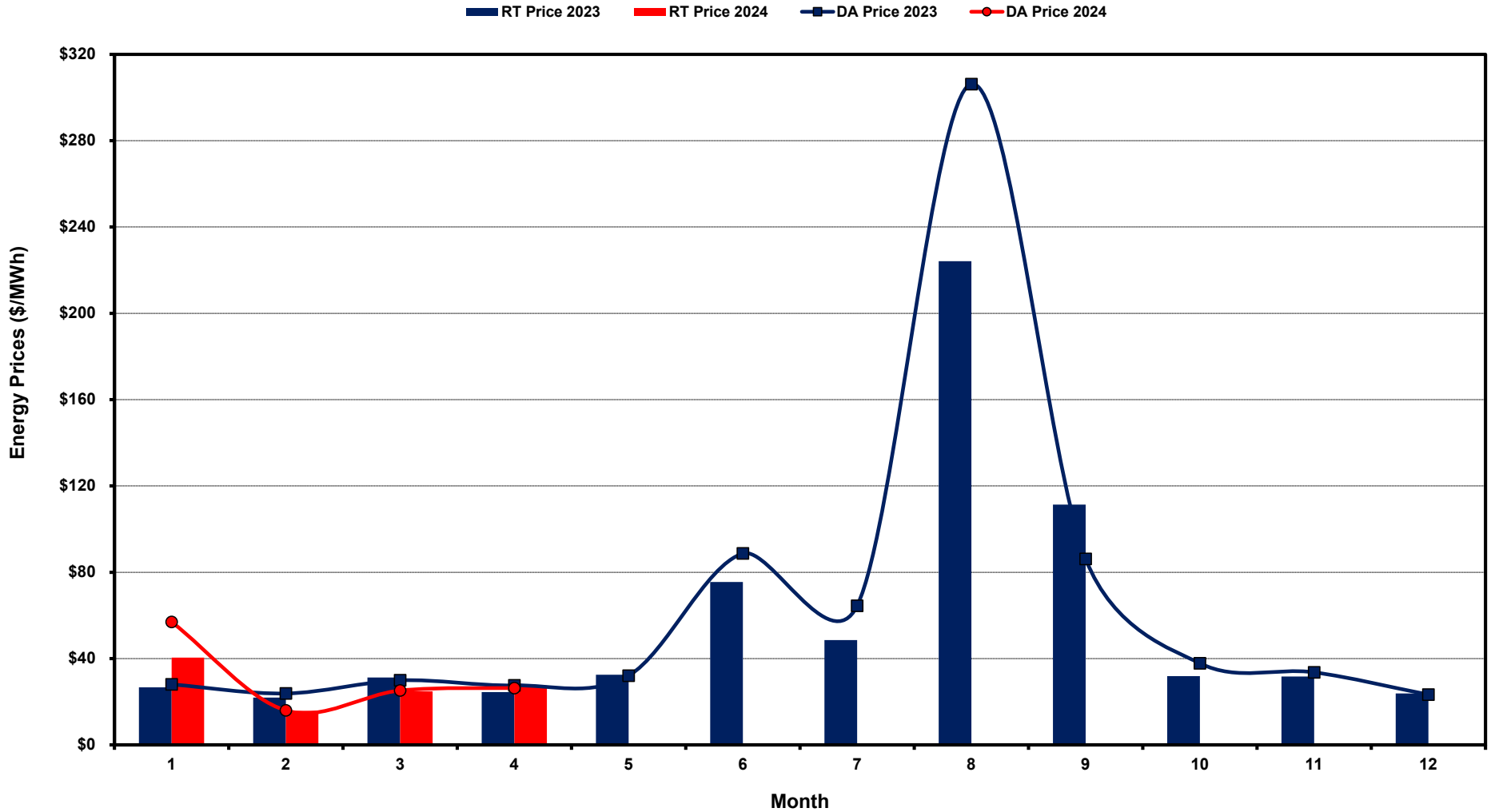
Friday, May 10, 2024

Potomac Economics, Ltd.
Independent Market Monitor

1	ERCOT-wide Average Energy Prices DA vs. RT
2	Load Zone Load Statistics
3	Load Zone Monthly Average Energy Prices DA vs RT
4	ERCOT-wide Monthly Implied Heat Rates DA vs RT
5	Load Zone Monthly Implied Heat Rates DA vs RT
6	Daily ORDC Reserve Adder Avg. Value and Duration
7	ORDC Floor Impact on Energy Cost
8	ORDC Floor Impact on Ancillary Services Imbalance
9	Monthly Ancillary Services Required MW
10	Hourly Average of Ancillary Services Required MW
11	Monthly Average Ancillary Services Price
12	Monthly Average A/S Cost per MWh Load
13	Ercot-wide Cumulative Peaker Net Margin
14	DA vs. RT Load Forecast Error by Hour Ending
15	Monthly Average of Wind Generation by Hour Ending
16	Monthly Average of Solar Generation by Hour Ending
17	RT Constraint Rankings
	- Top 10 Constraints by Total Congestion Value
	- Top 10 Constraints by Binding Frequency
18	DA Constraint Rankings
	- Top 10 Constraints by Total Congestion Value
	- Top 10 Constraints by Binding Frequency
19	CRR Pairs by Monthly Auction Value Rankings
	- Top 10 PTP Obligations by Total Transaction Value
	- Top 10 PTP Options by Total Transaction Value

ERCOT-wide Average Energy Prices DA vs RT

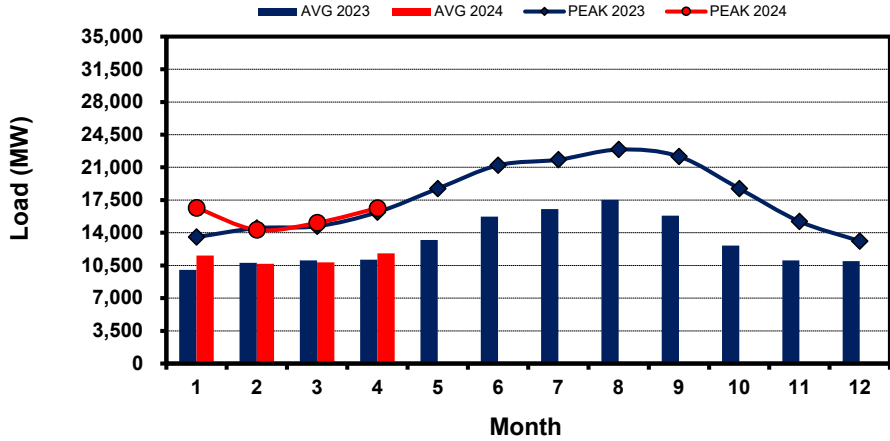
(avg. DA & RT SPPs weighted by Real Time Settlement Loads)



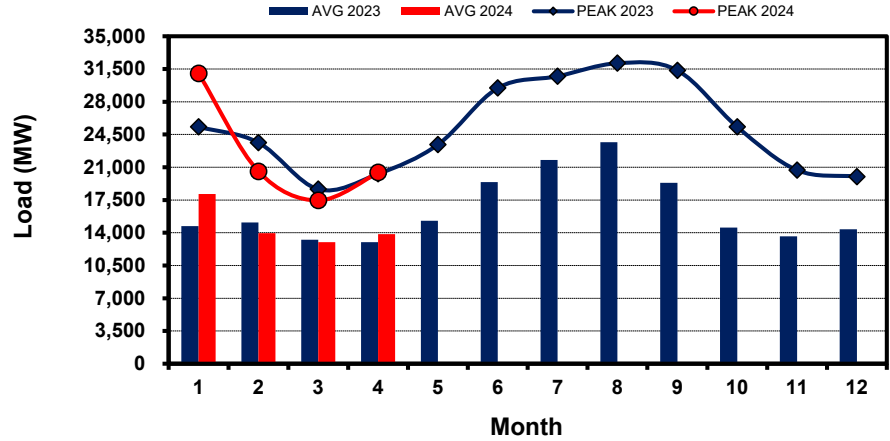
Load Zone Load Statistics

(Nodal load zone made comparable to zonal system Load Zone definitions*)

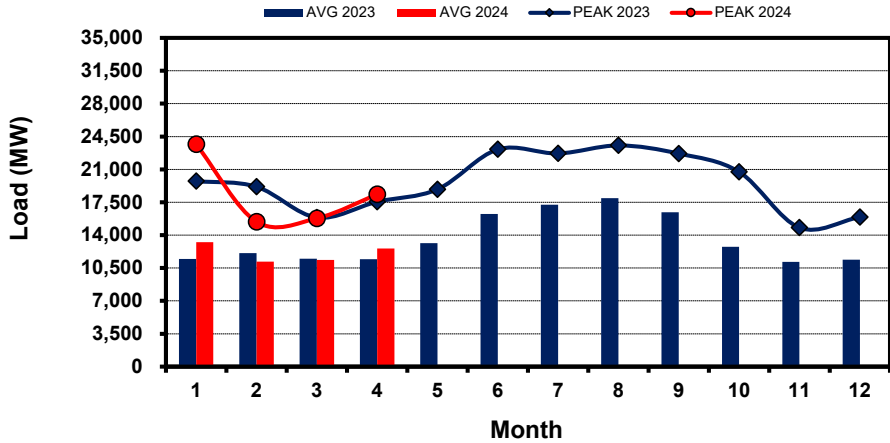
Houston Zone



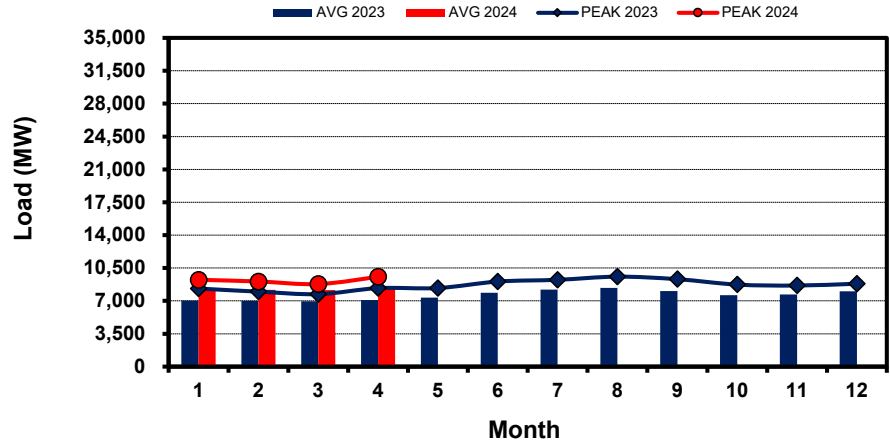
North Zone



South Zone



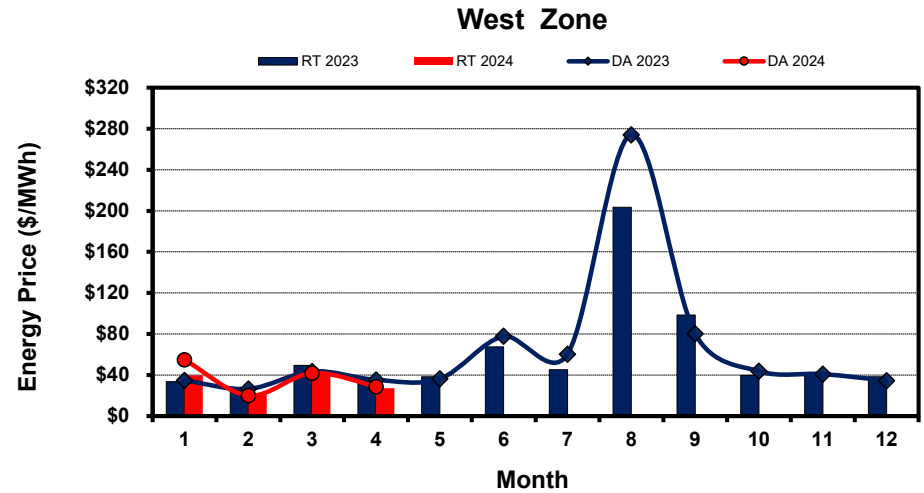
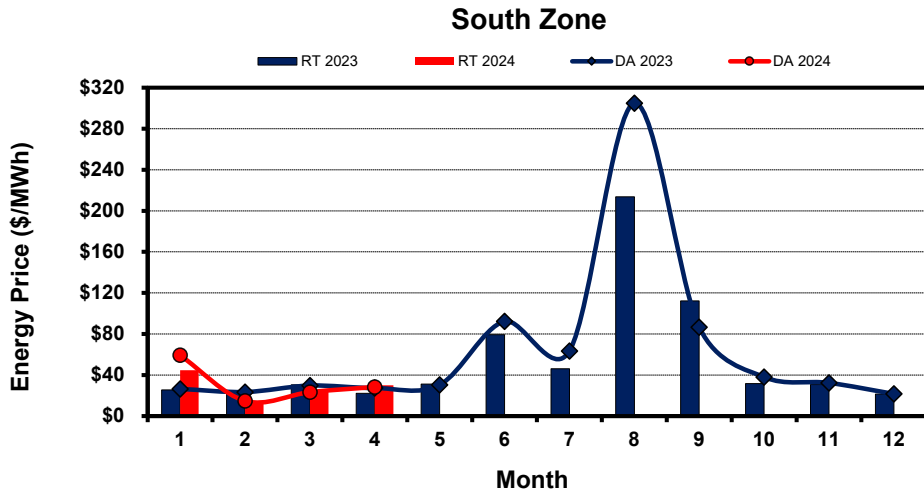
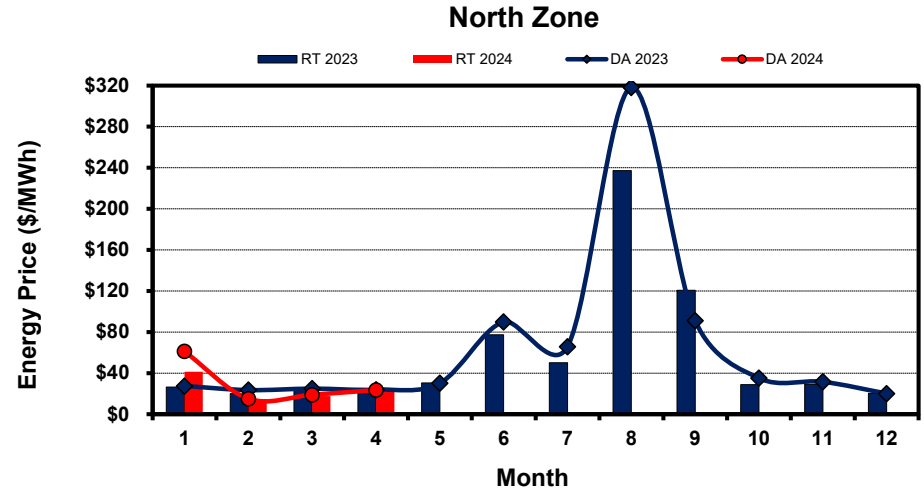
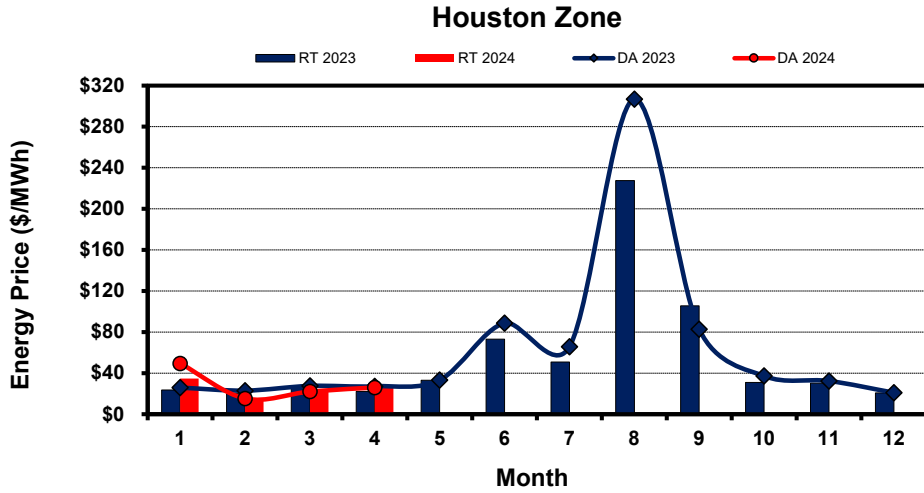
West Zone



Note: * Zonal load zone definition vs. Nodal comparable load zone definition: LZ_Houston=LZ_Houston; LZ_West=LZ_West; LZ_North=(LZ_North,LZ_RAYBN); LZ_South=(LZ_South,LZ_CPS,LZ_AEN,LZ_LCRA)

Load Zone Monthly Average Energy Price DA vs RT

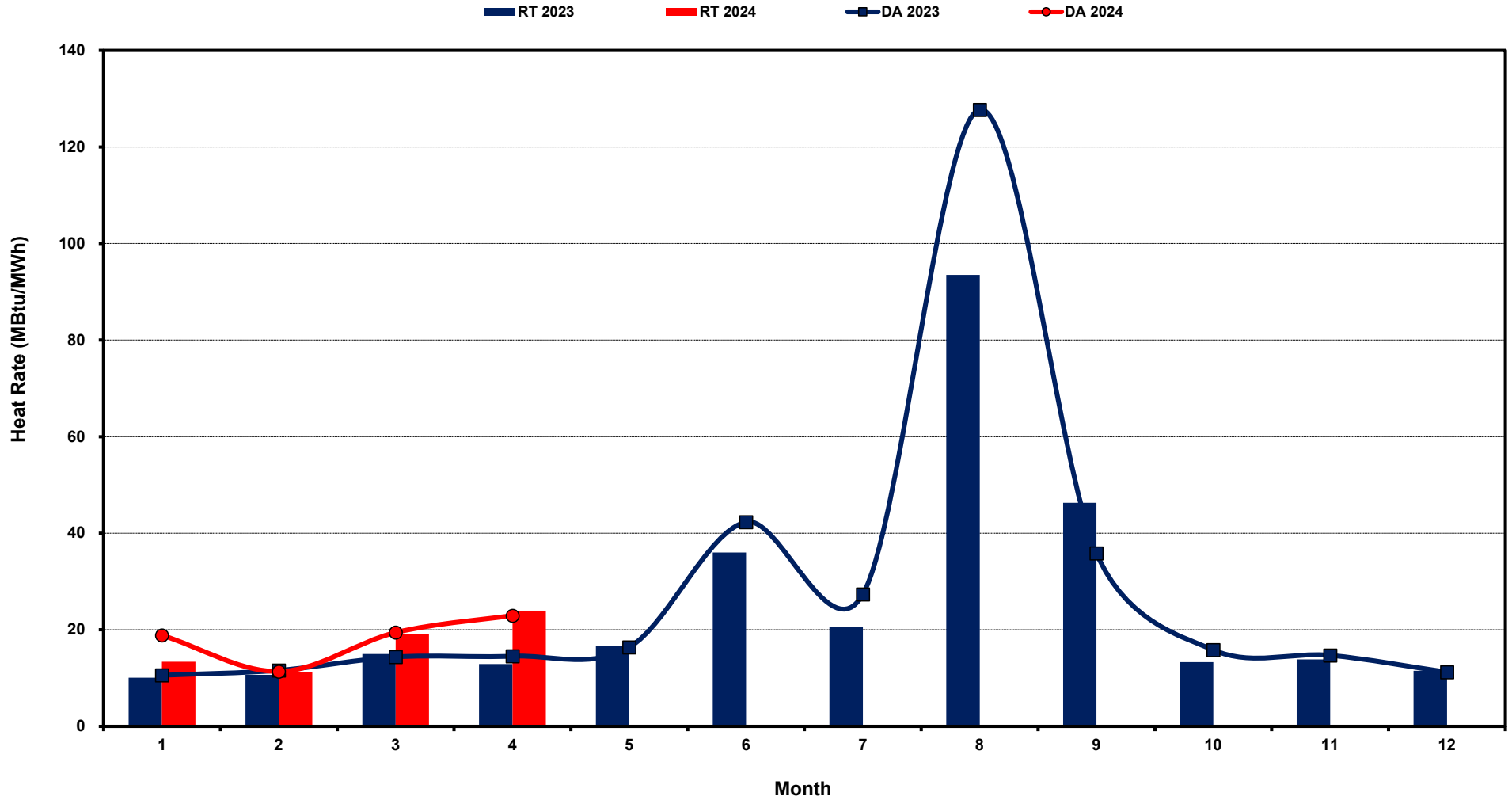
(avg. DA & RT SPPs weighted by Real Time Settlement Loads)
 (Nodal load zone made comparable to zonal sytem Load Zone definitions*)



Note: * Zonal load zone definition vs. Nodal comparable load zone definition: LZ_Houston=LZ_Houston; LZ_West=LZ_West; LZ_North=(LZ_North,LZ_RAYBN); LZ_South=(LZ_South,LZ_CPS,LZ_AEN,LZ_LCRA)

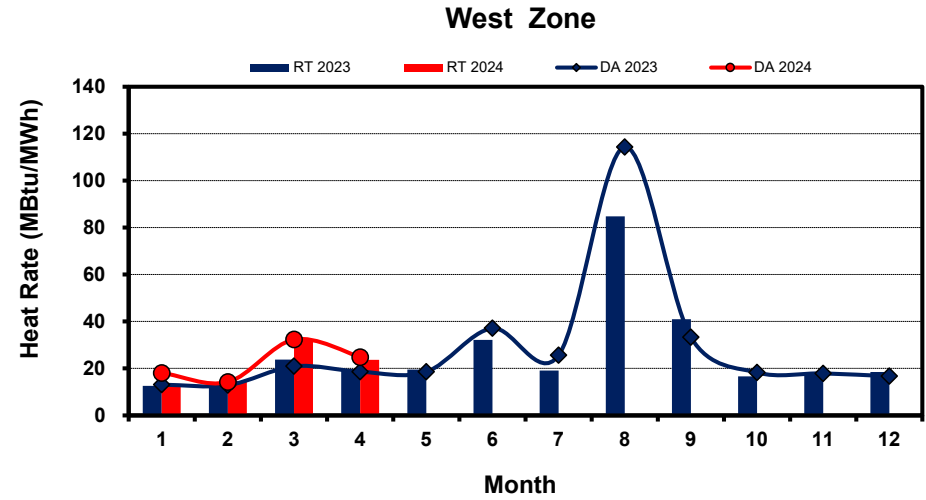
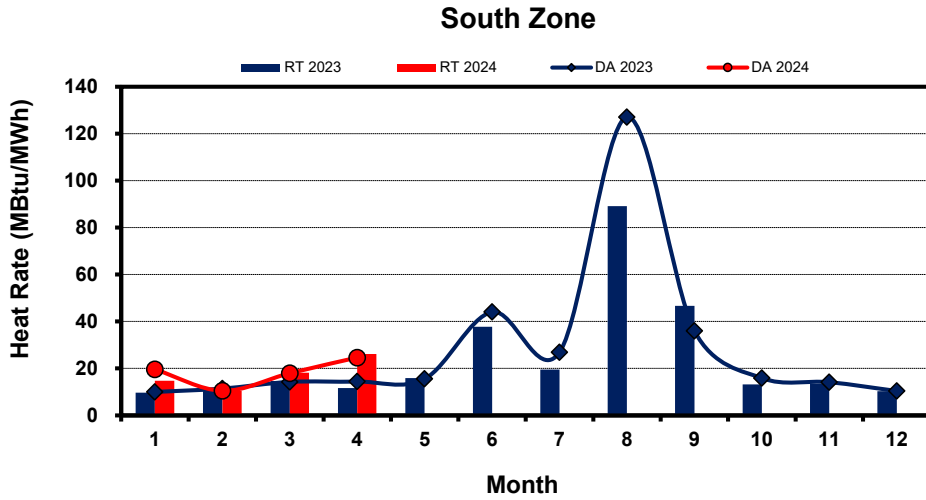
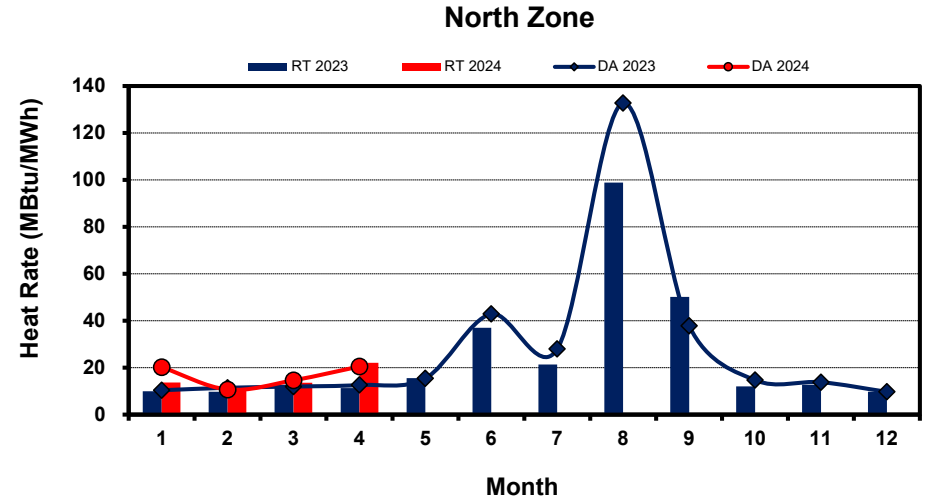
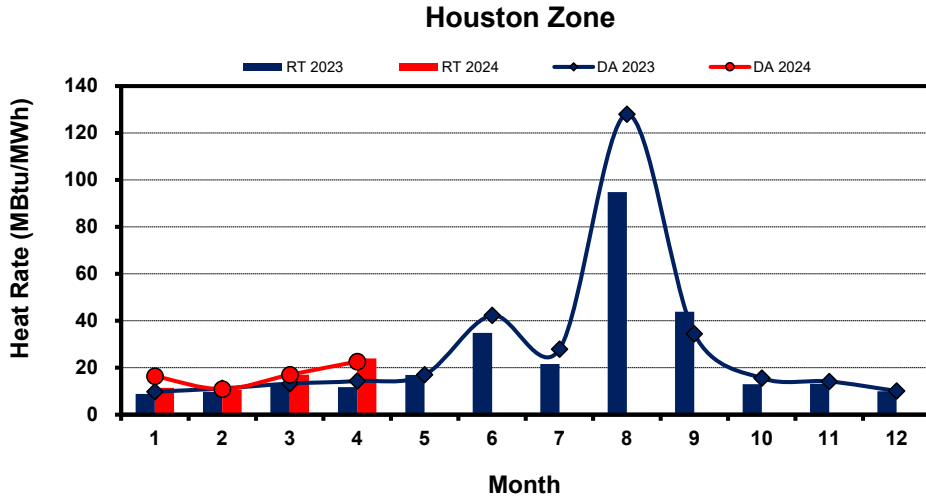
ERCOT-wide Monthly Implied Heat Rate DA vs RT

(avg. heat rates weighted by Real Time Settlement Loads)



Load Zone Monthly Implied Heat Rate DA vs RT

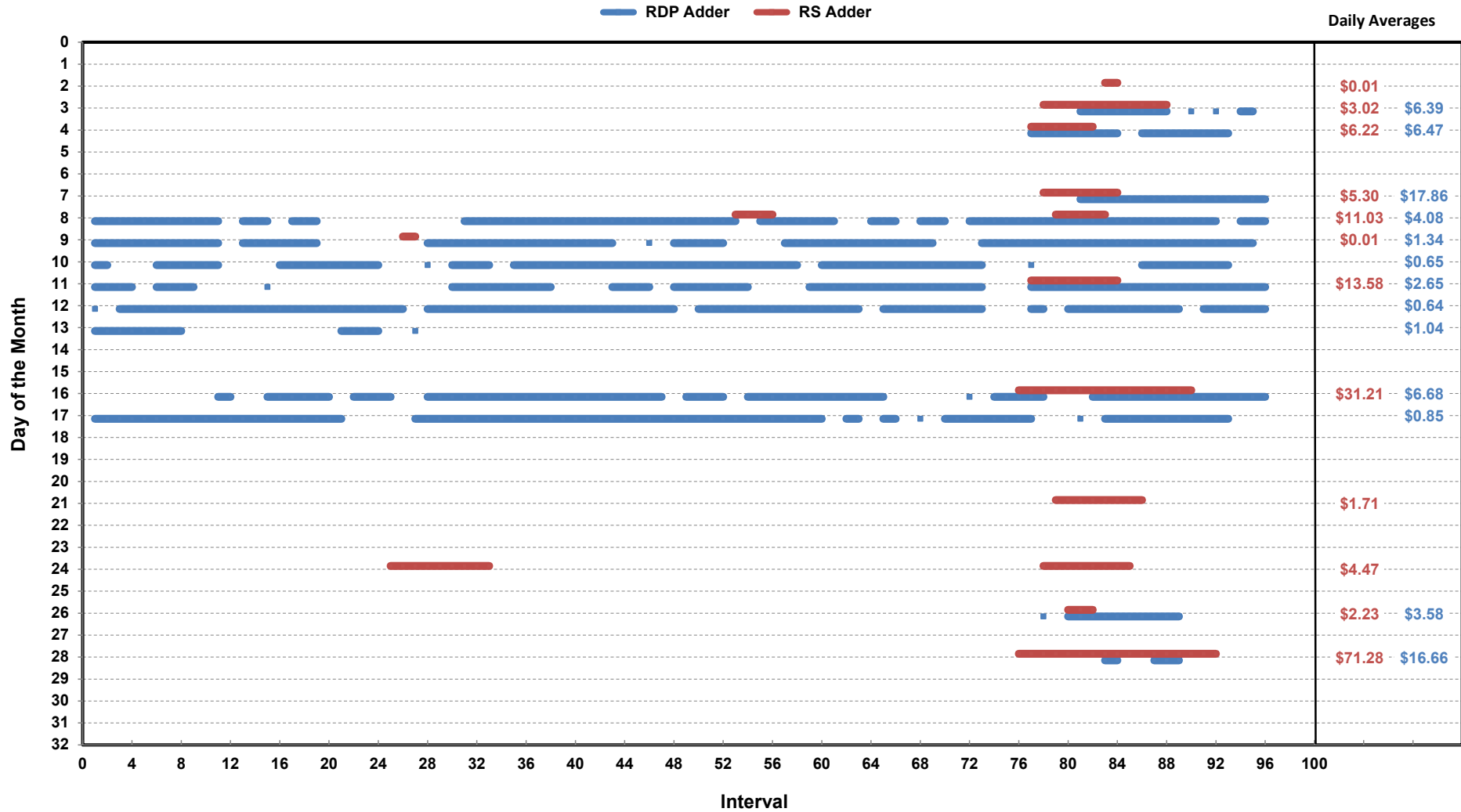
(avg. heat rates weighted by Real Time Settlement Loads)
 (Nodal load zone made comparable to zonal sytem Load Zone definitions*)



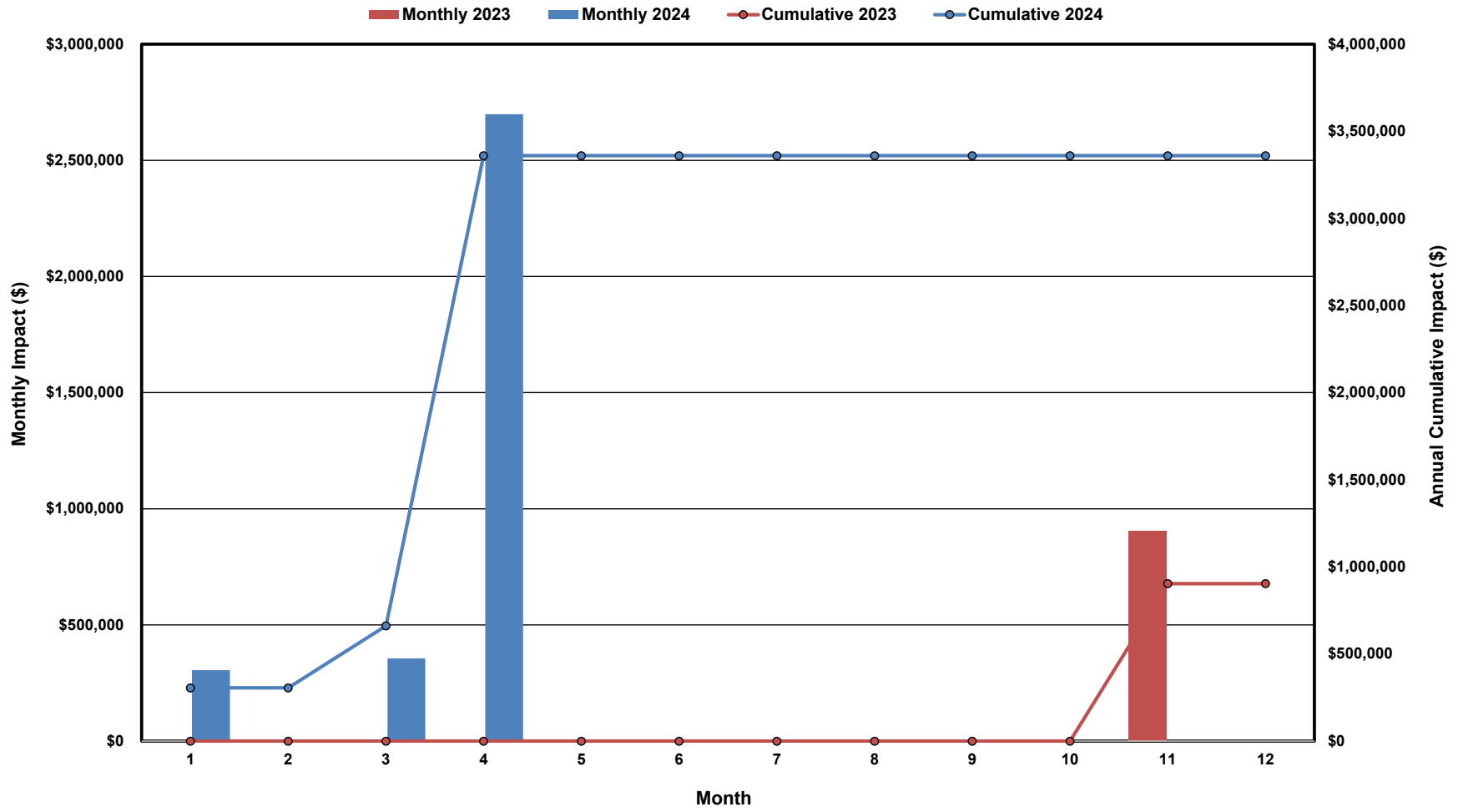
Note: * Zonal load zone definition vs. Nodal comparable load zone definition: LZ_Houston=LZ_Houston; LZ_West=LZ_West; LZ_North=(LZ_North,LZ_RAYBN); LZ_South=(LZ_South,LZ_CPS,LZ_AEN,LZ_LCRA)

Daily ORDC Adders Average Values and Interval Duration

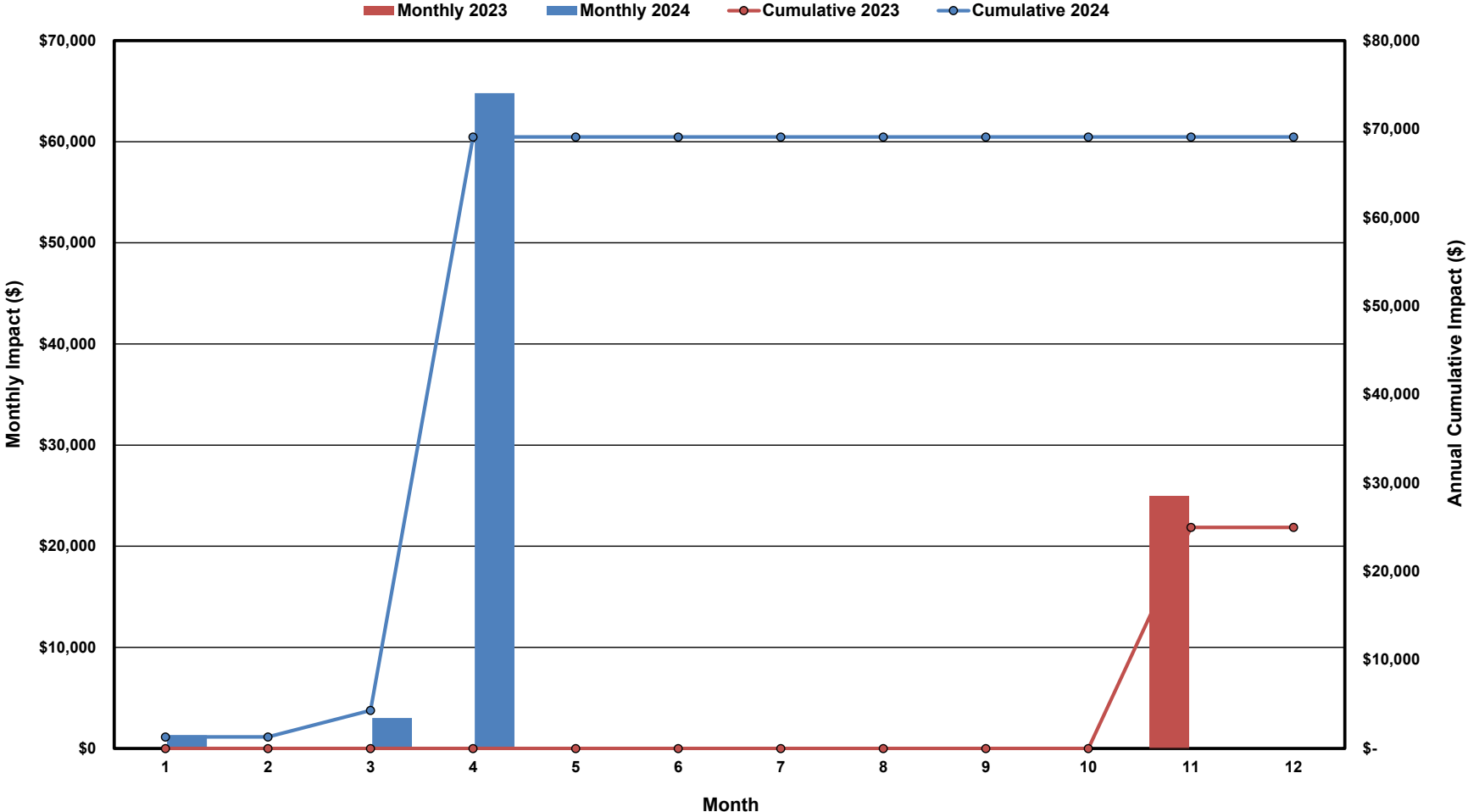
Apr-2024



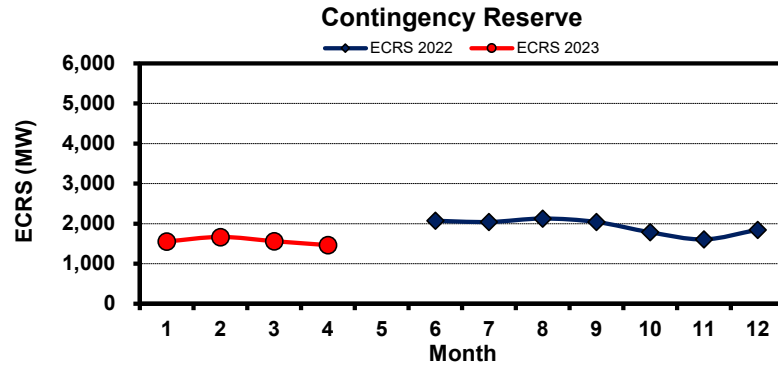
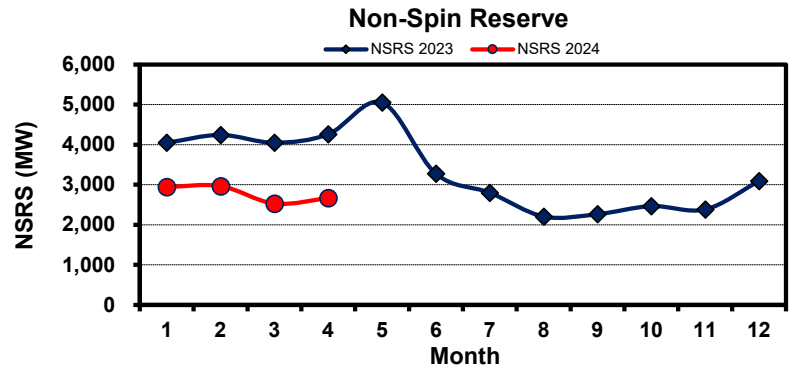
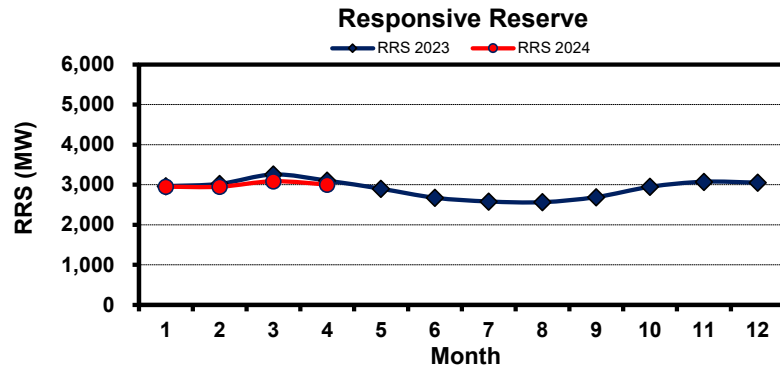
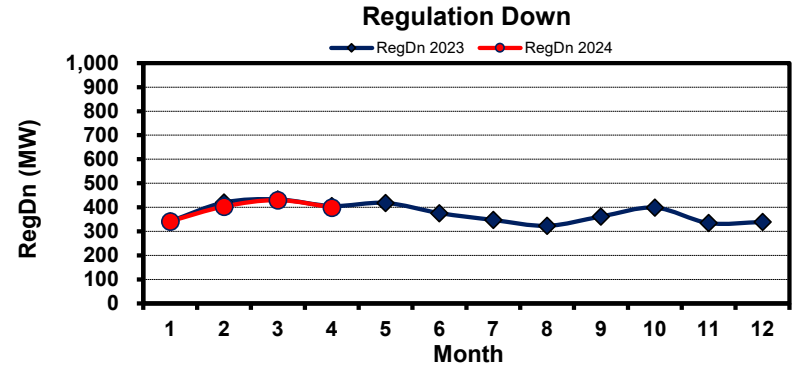
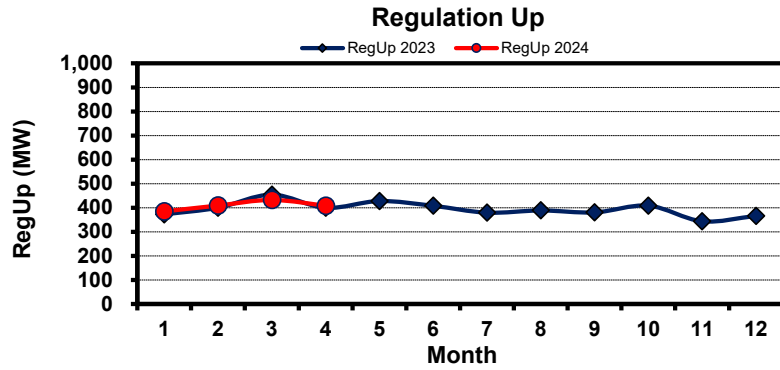
Monthly Total Impacts on Energy Cost from ORDC RS Adder Floors



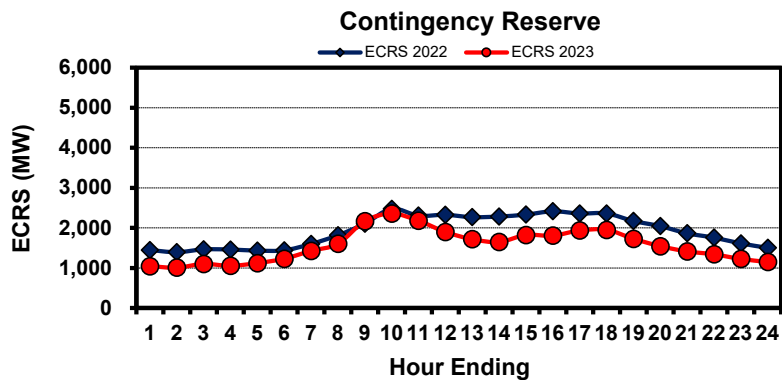
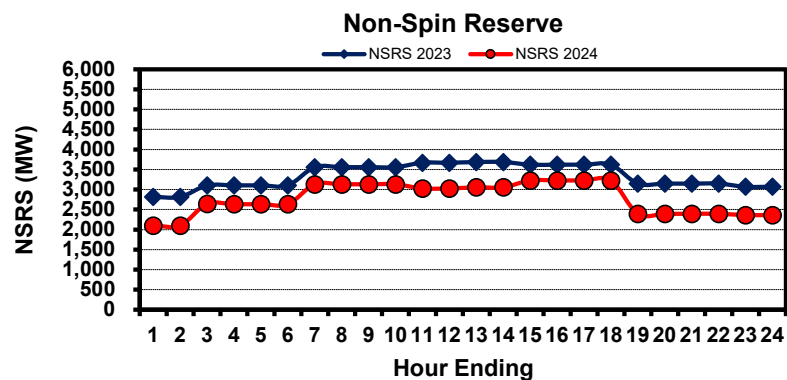
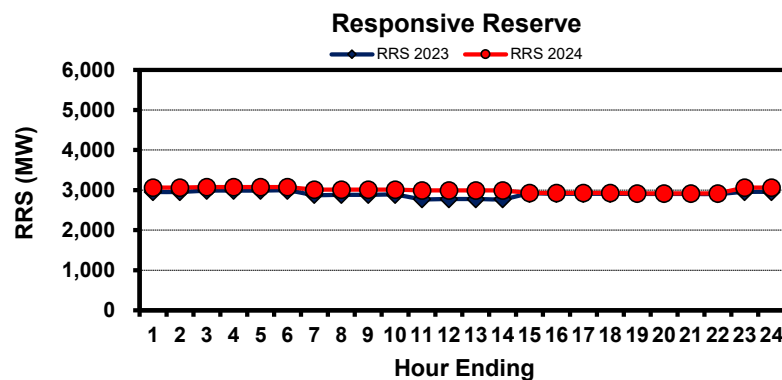
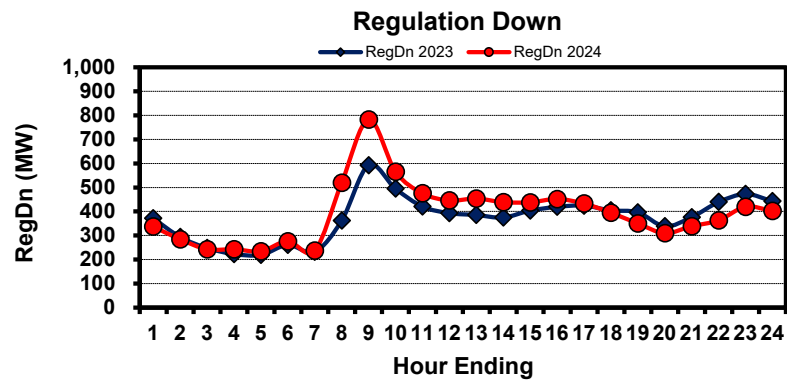
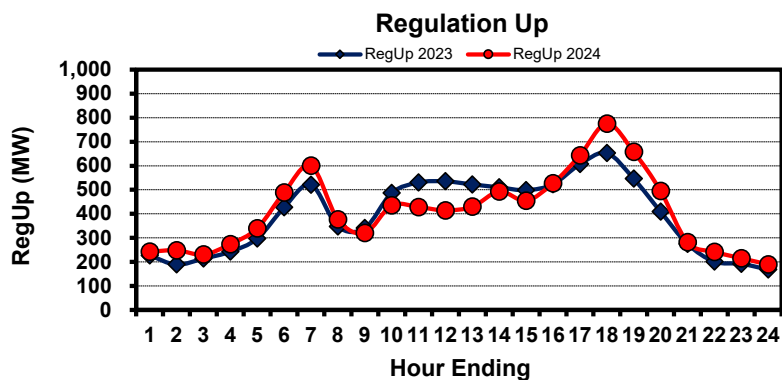
Monthly Total Impacts on A/S Imbalance from ORDC RS Adder Floors



Monthly Average of Ancillary Services Required MW

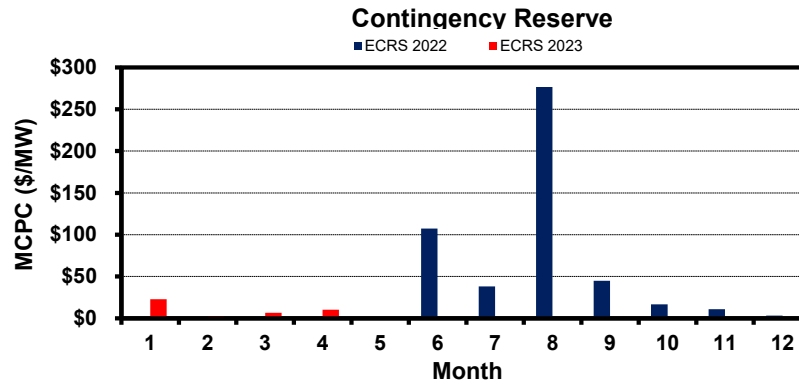
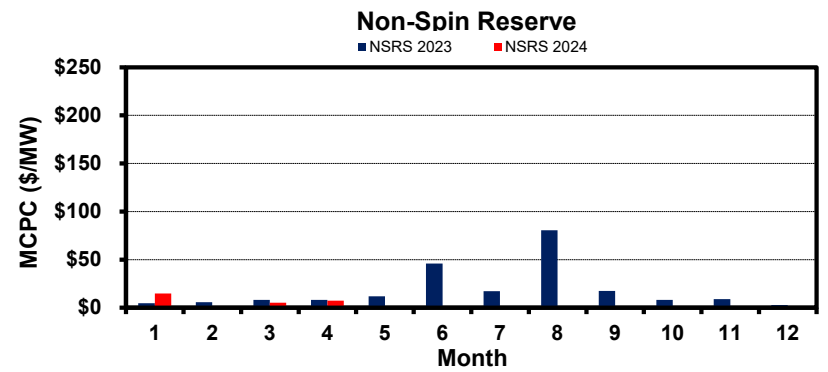
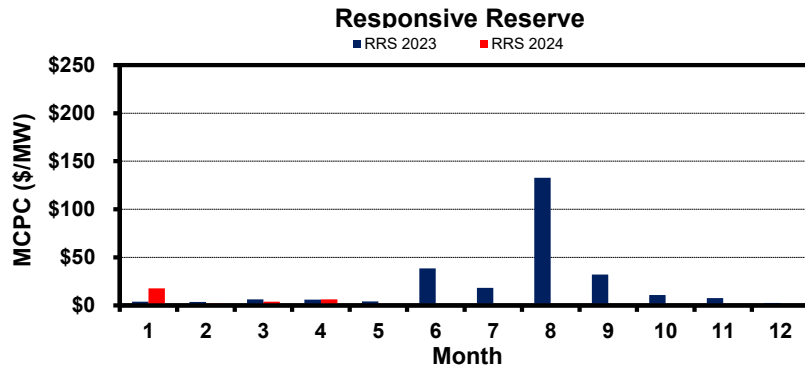
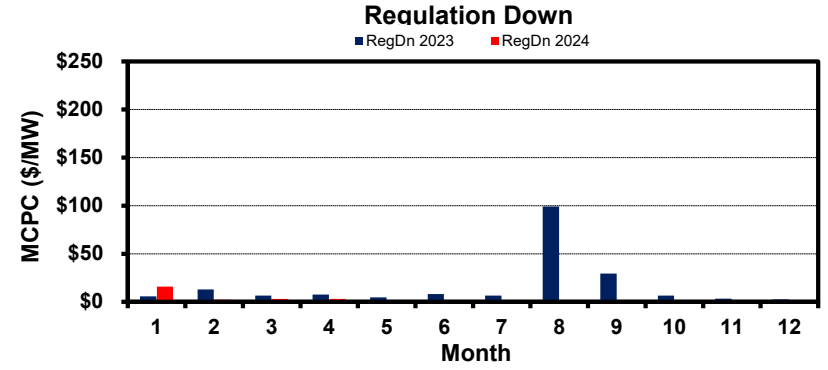
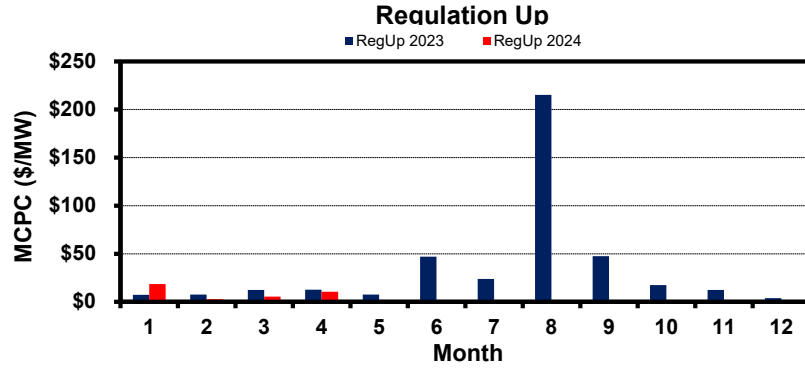


Hourly Average of Ancillary Services Required MW

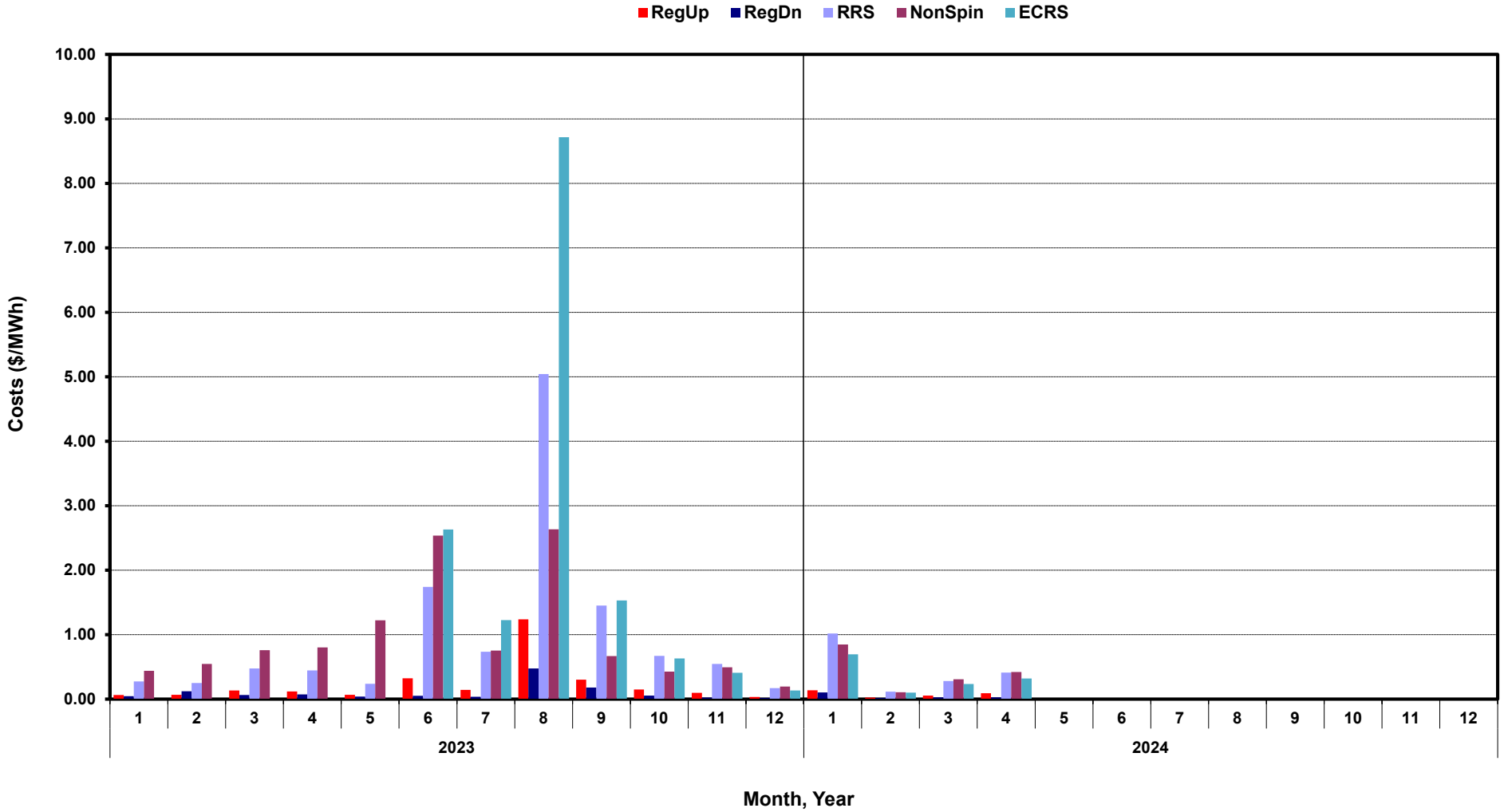


Monthly Average Ancillary Services Price

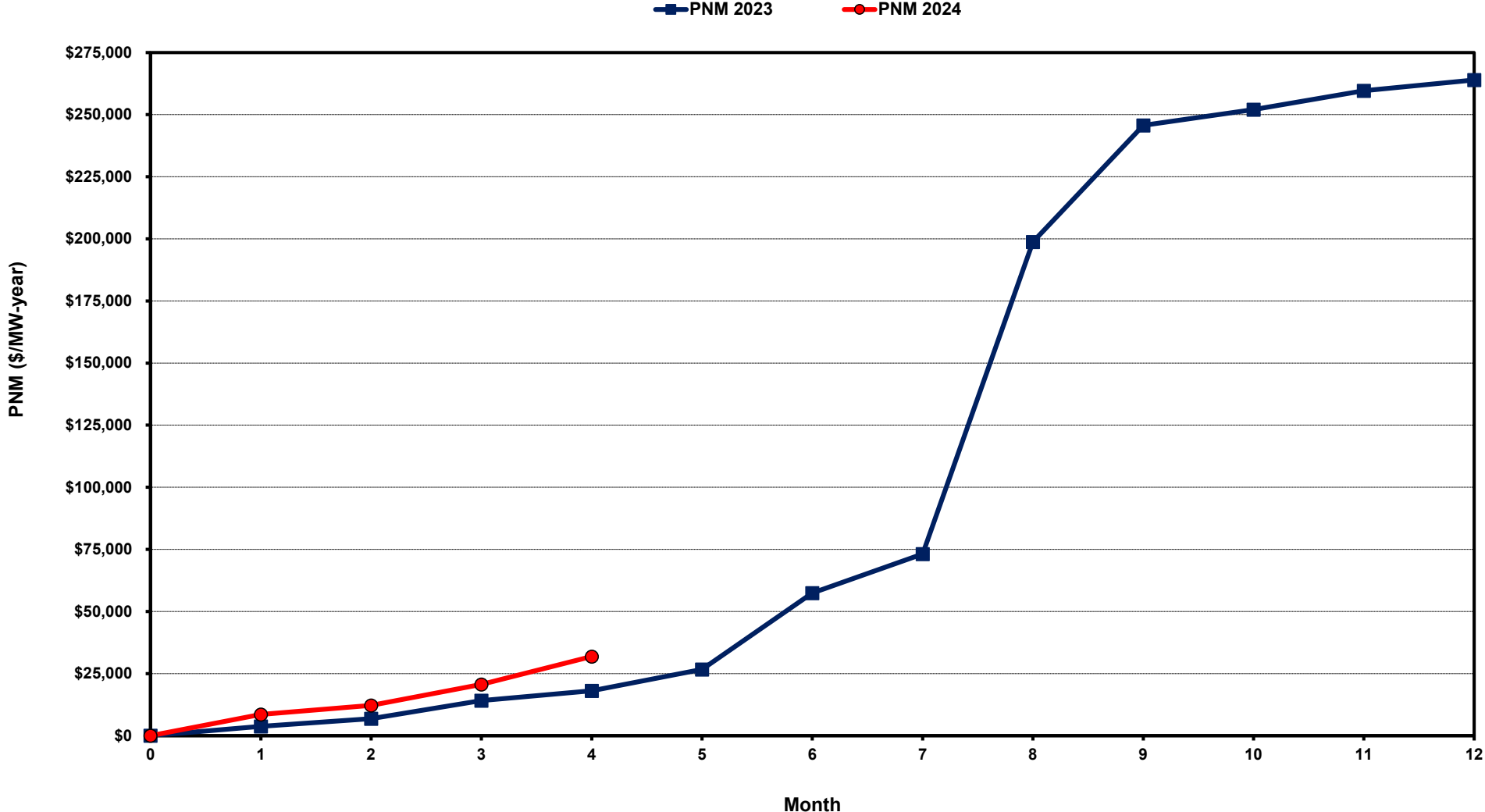
(weighted by A/S Quantities Required)



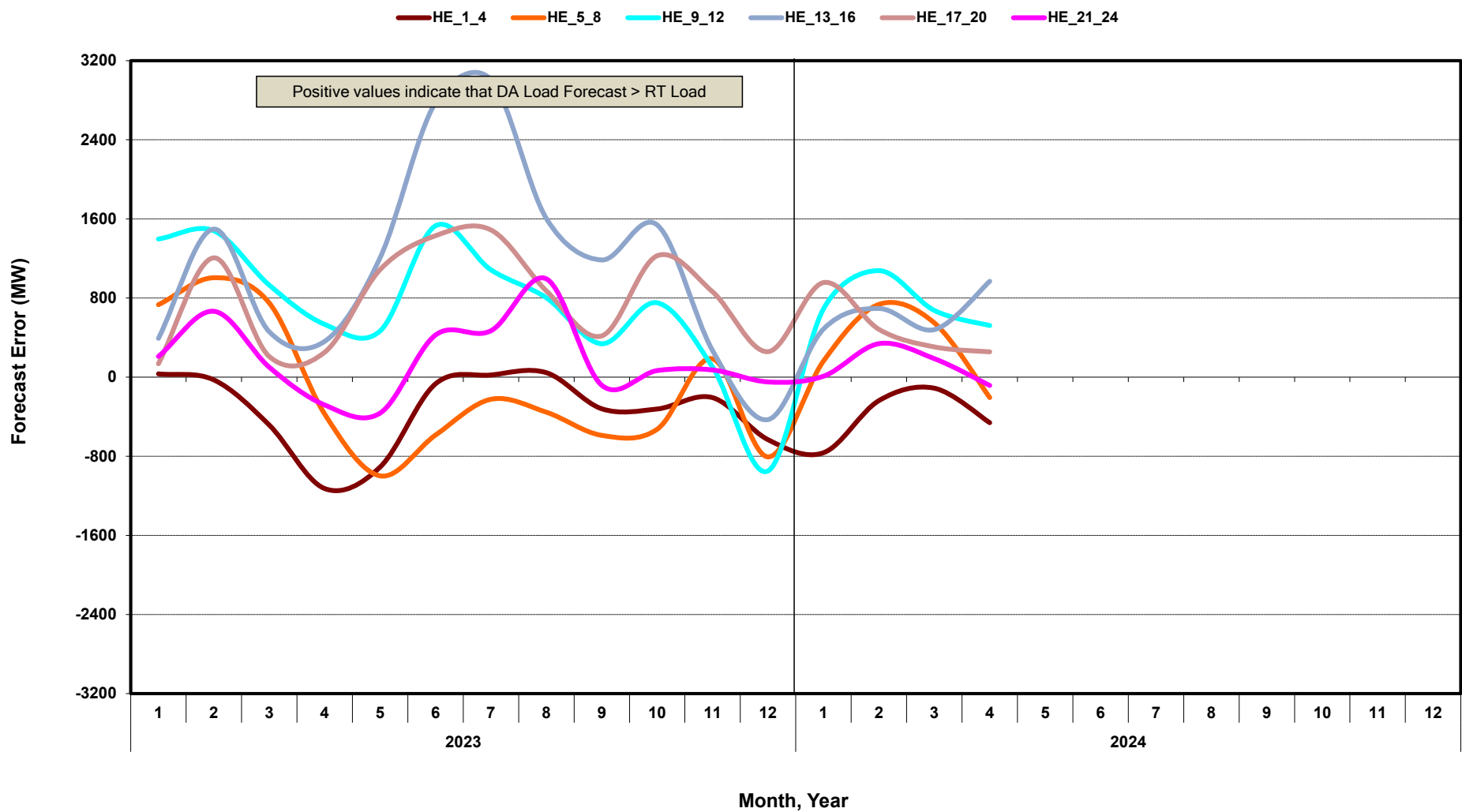
Monthly Average A/S Cost per MWh Load



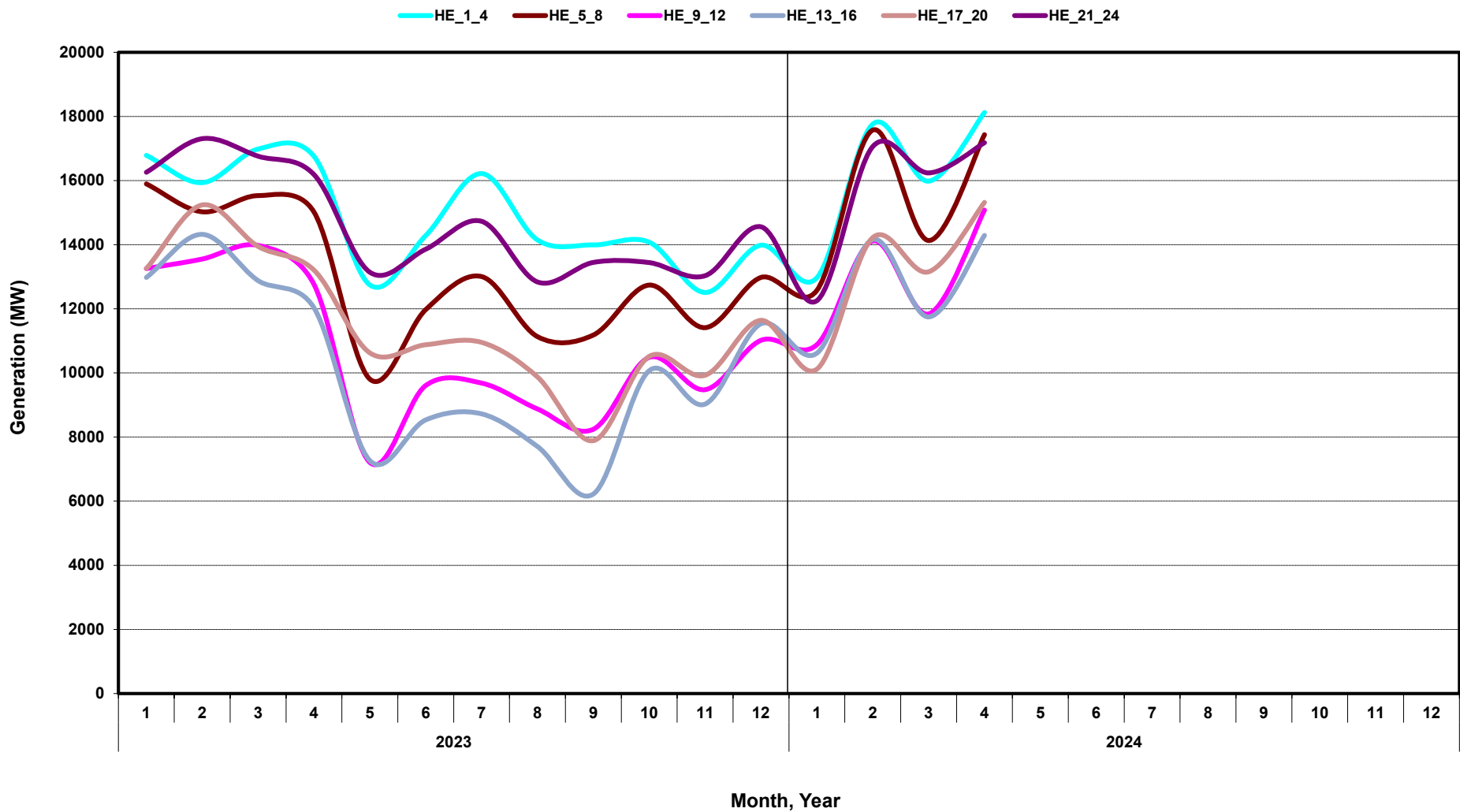
ERCOT-wide Cumulative Peaker Net Margin



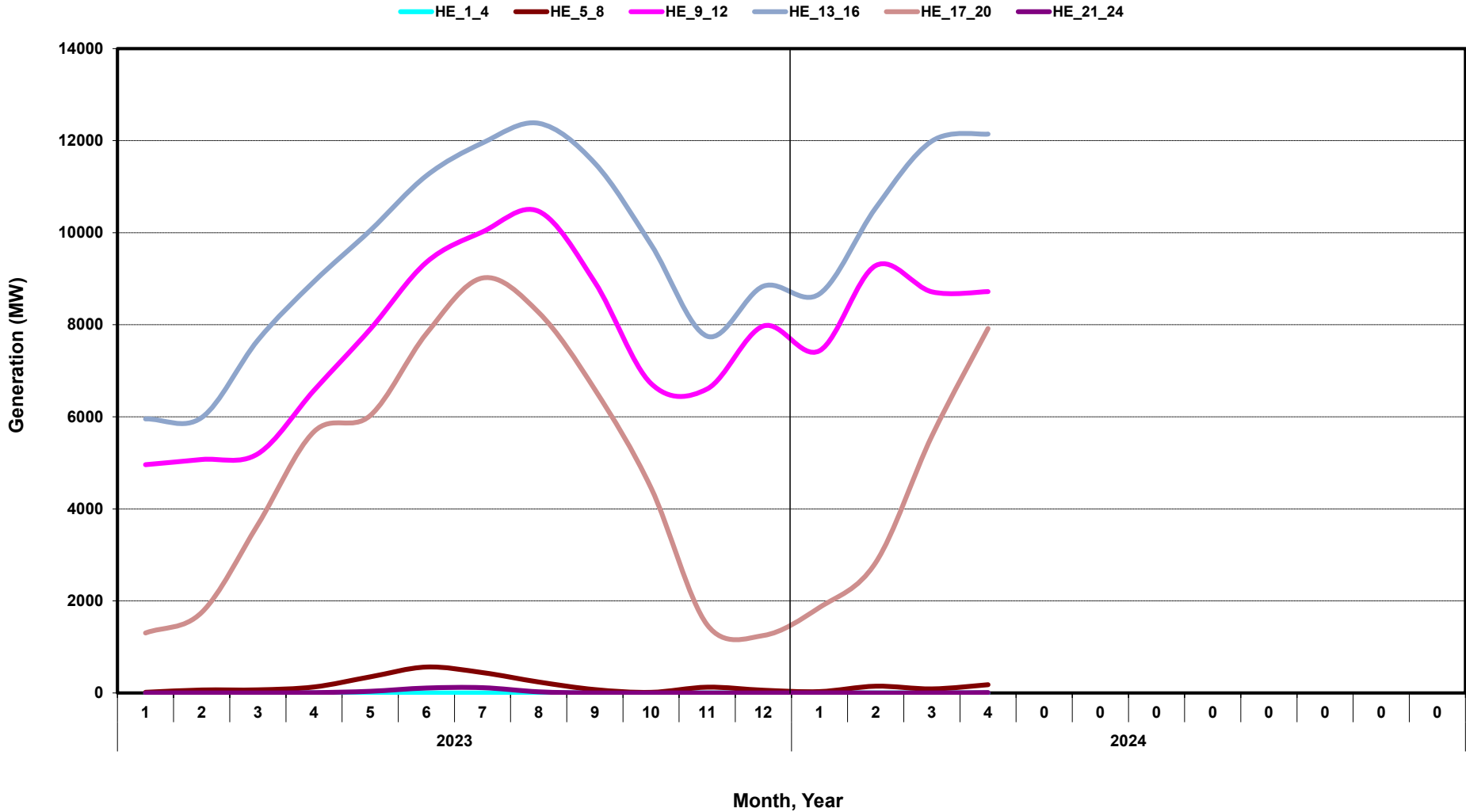
DA vs. RT Load Forecast Error by Hour Ending



Monthly Average of Wind Generation by Hour Ending

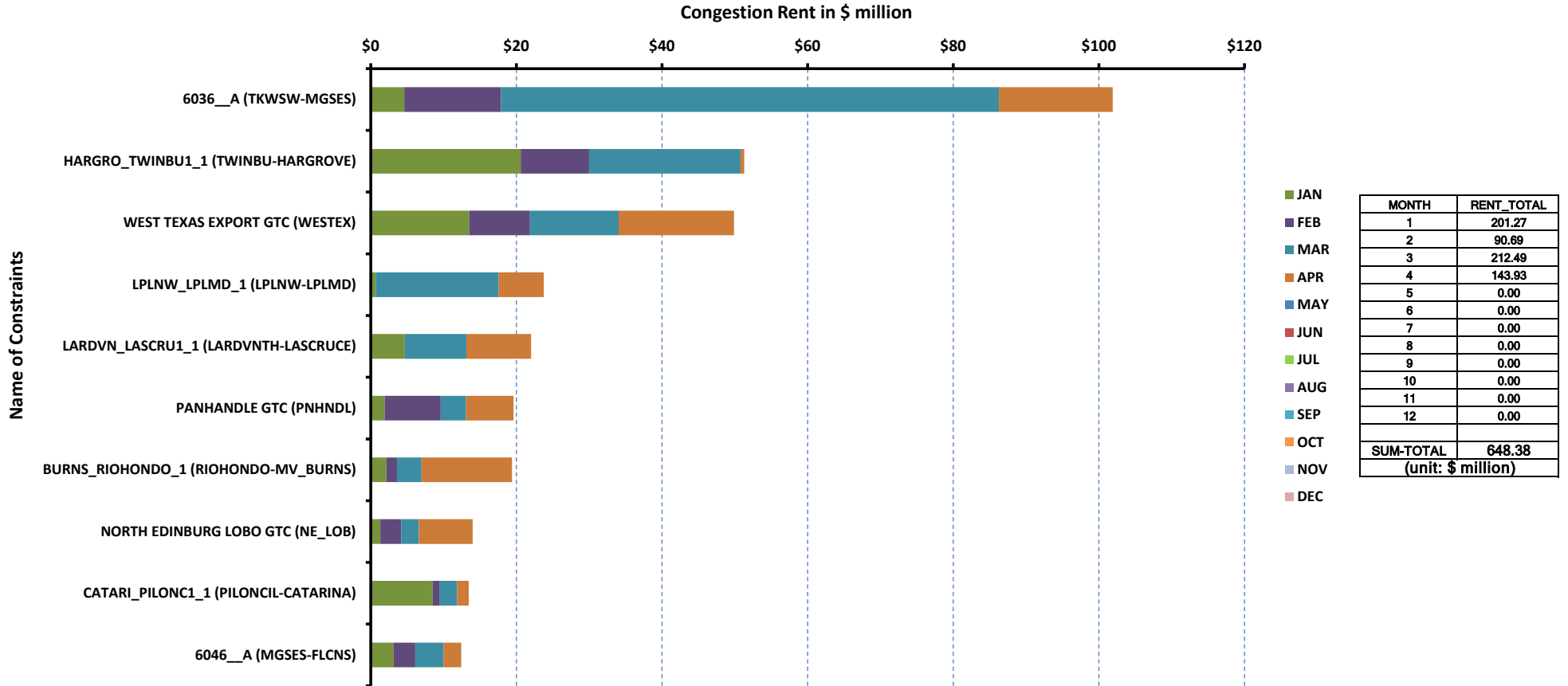


Monthly Average of Solar Generation by Hour Ending



RT Congestion Constraint Rankings - 1

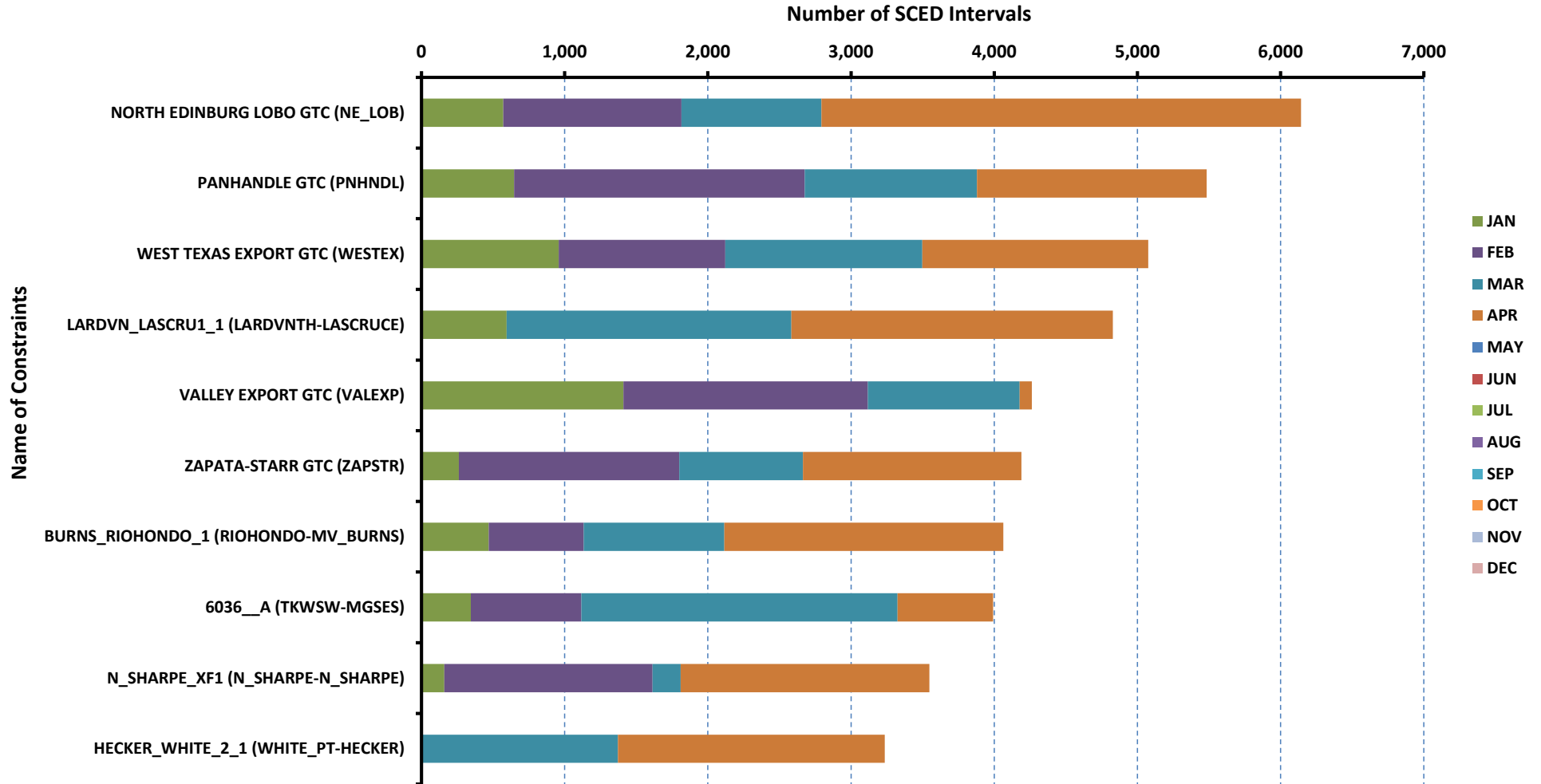
Top 10 Constraints by Total Congestion Value - 2024



MONTH	RENT_TOTAL
1	201.27
2	90.69
3	212.49
4	143.93
5	0.00
6	0.00
7	0.00
8	0.00
9	0.00
10	0.00
11	0.00
12	0.00
SUM-TOTAL	648.38
(unit: \$ million)	

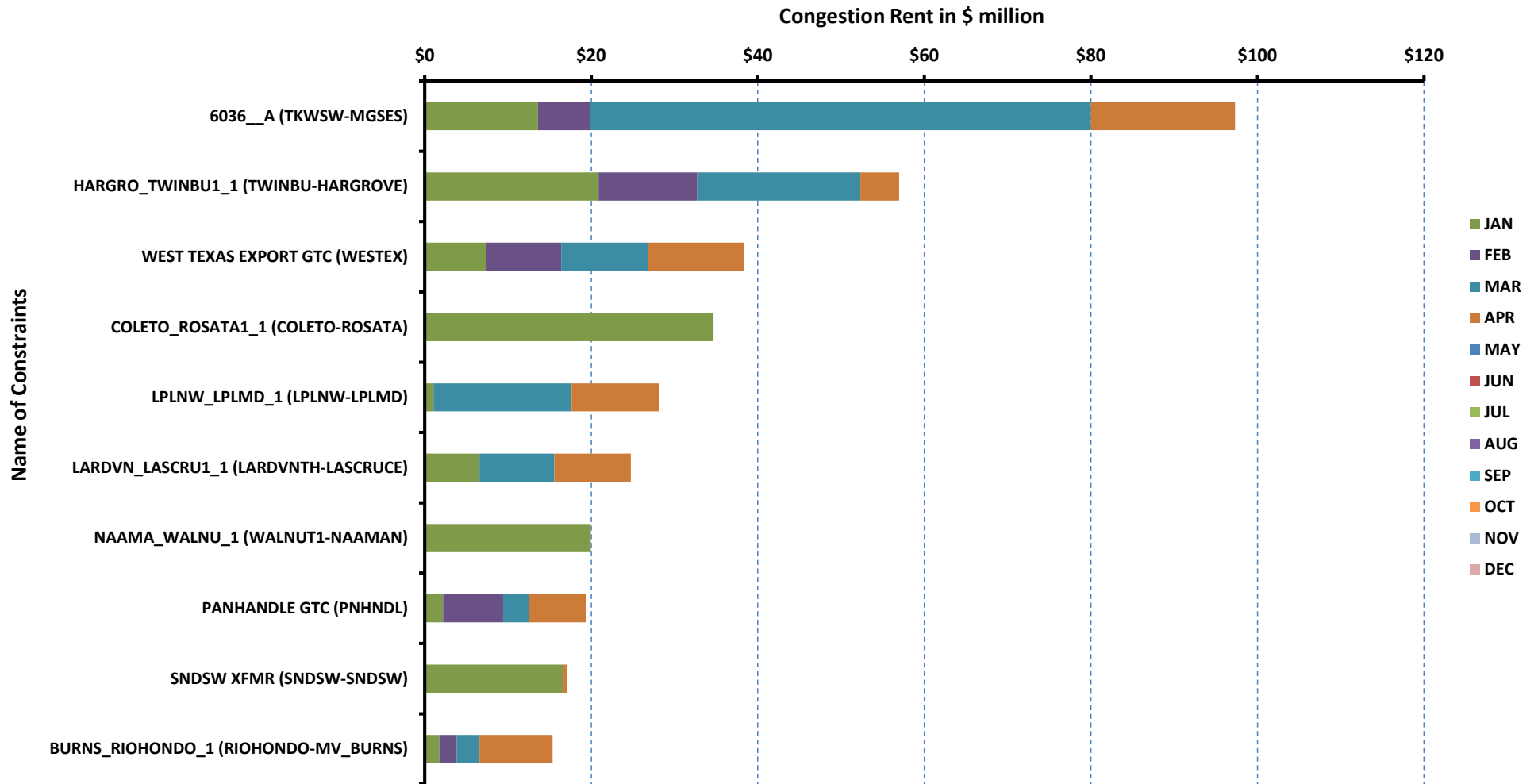
RT Congestion Constraint Rankings - 2

Top 10 Constraints by Binding Frequency - 2024



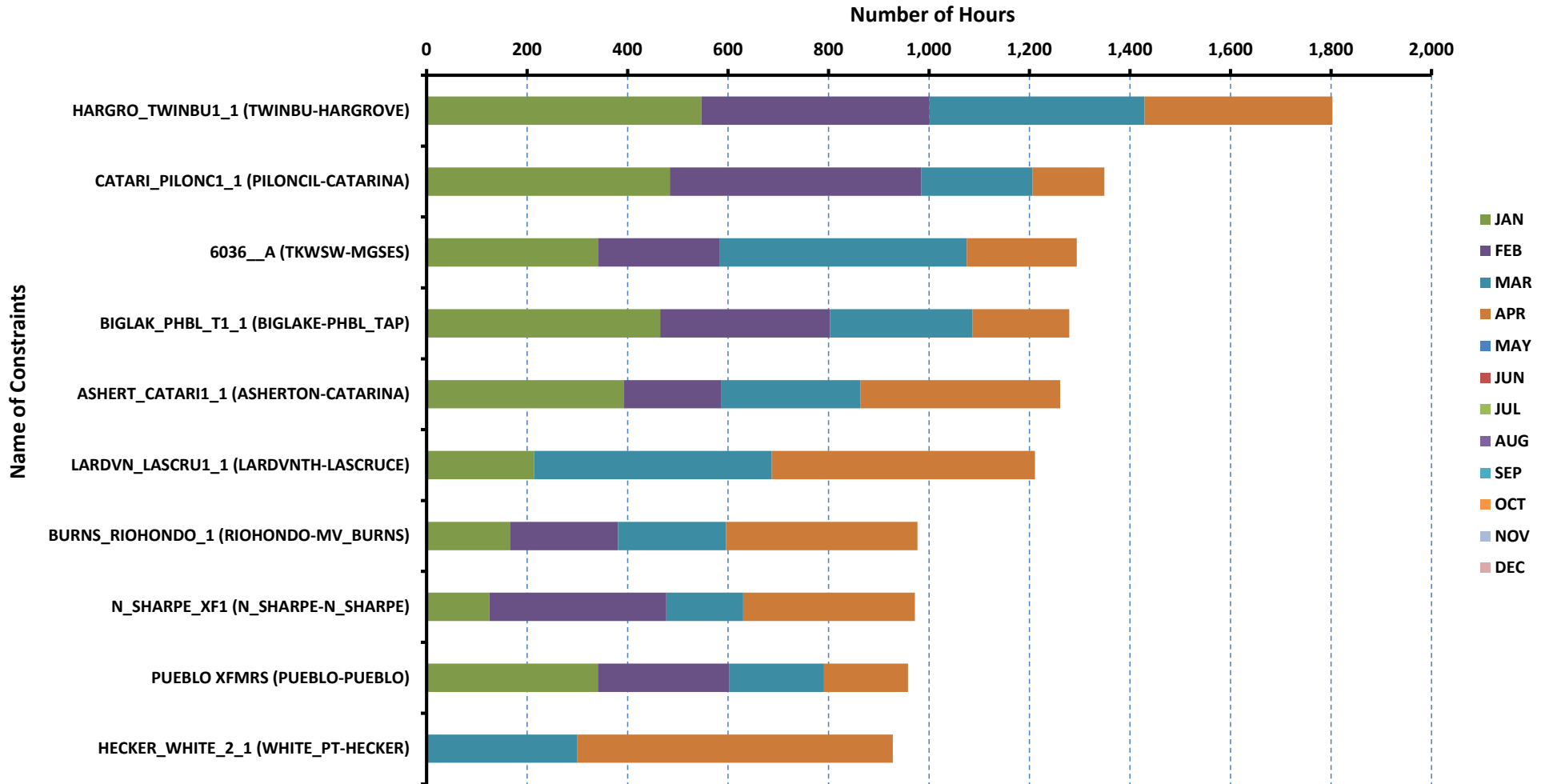
DA Congestion Constraint Rankings - 1

Top 10 Constraints by Total Congestion Value - 2024



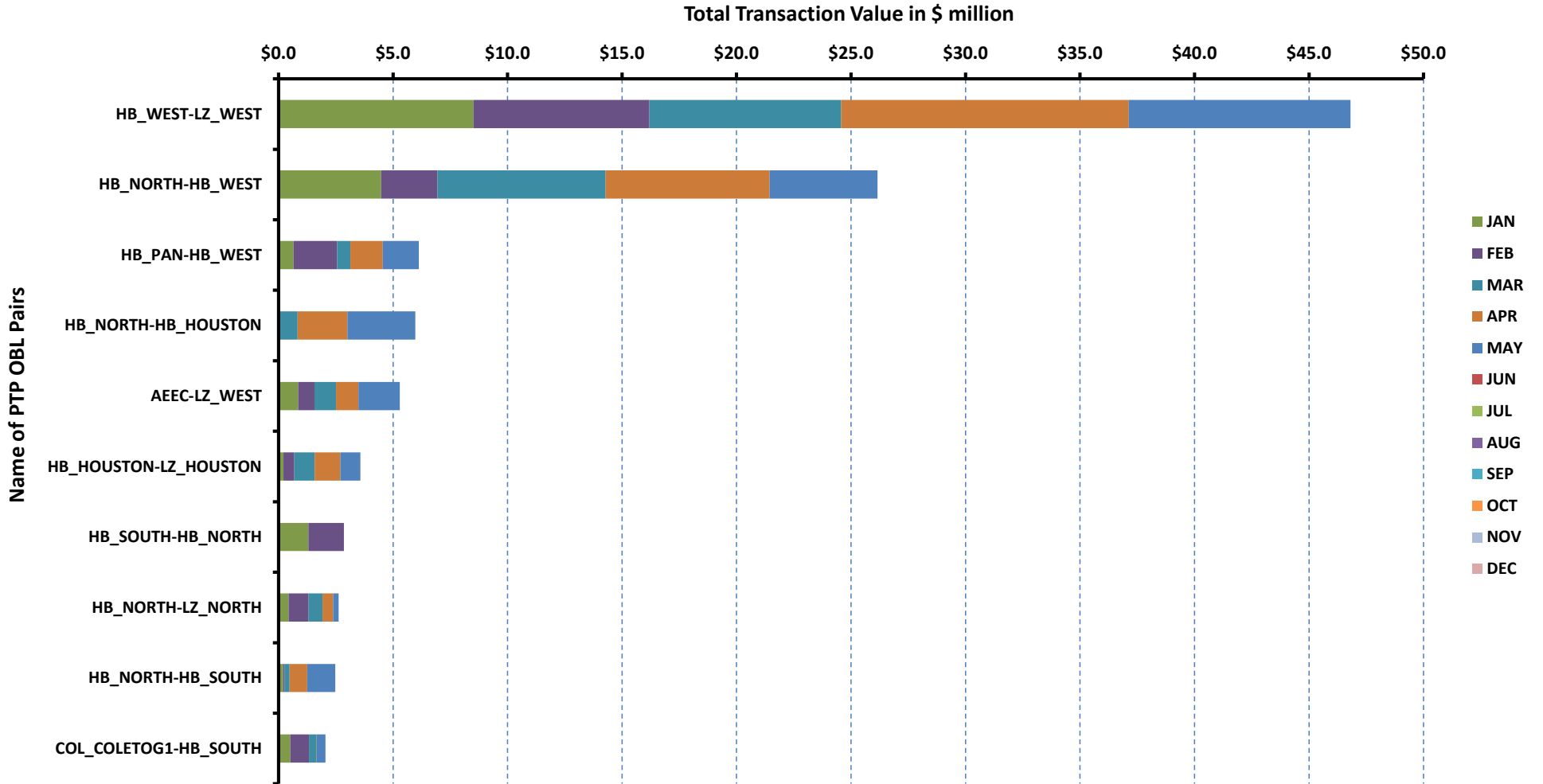
DA Congestion Constraint Rankings - 2

Top 10 Constraints by Binding Frequency - 2024



Top 10 CRR Pairs Ranked by Monthly Auction Values - 1

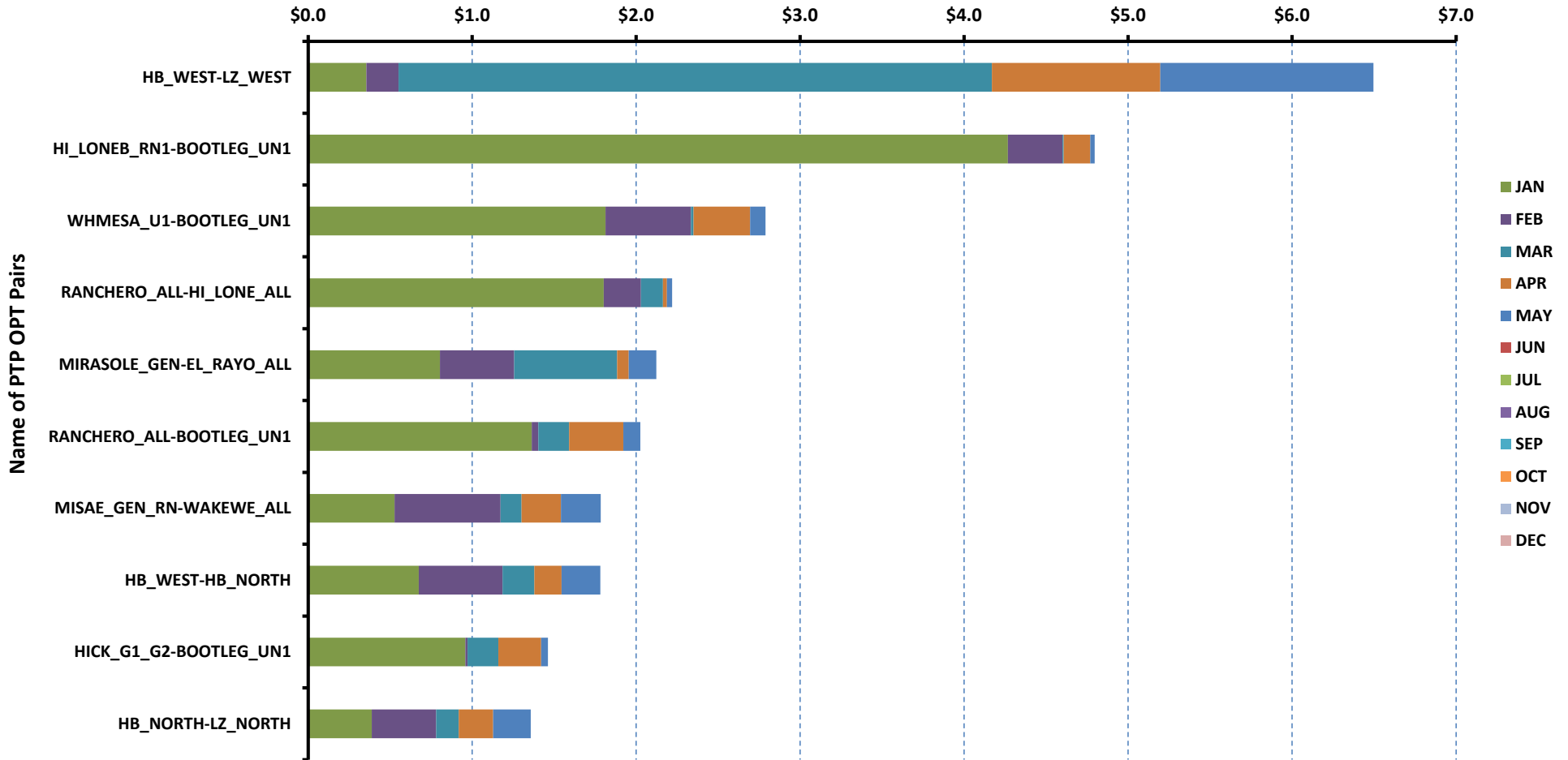
Top 10 PTP Obligations by Total Transaction Value - 2024



Top 10 CRR Pairs Ranked by Monthly Auction Values - 2

Top 10 PTP Options by Total Transaction Value - 2024

Total Transaction Value in \$ million



ERCOT-wide Avg. Energy Price - DA vs. RT			
year	month	dam_spp	rtm_spp
2023	1	\$ 28.02	\$ 26.68
	2	\$ 23.83	\$ 21.95
	3	\$ 29.90	\$ 31.20
	4	\$ 27.58	\$ 24.45
	5	\$ 32.08	\$ 32.48
	6	\$ 88.69	\$ 75.44
	7	\$ 64.45	\$ 48.58
	8	\$ 306.22	\$ 224.18
	9	\$ 86.20	\$ 111.36
	10	\$ 37.83	\$ 31.84
	11	\$ 33.62	\$ 31.71
	12	\$ 23.30	\$ 23.87
2024	1	\$ 57.00	\$ 40.43
	2	\$ 15.96	\$ 15.83
	3	\$ 25.20	\$ 24.81
	4	\$ 26.34	\$ 27.51
	5	\$ -	\$ -
	6	\$ -	\$ -
	7	\$ -	\$ -
	8	\$ -	\$ -
	9	\$ -	\$ -
	10	\$ -	\$ -
	11	\$ -	\$ -
	12	\$ -	\$ -

ERCOT-wide Monthly Implied Heat Rate - DA vs. RT						
year	month	gasprice	rtm_spp	HR_rtm	dam_spp	HR_dam
2023	1	\$ 2.65	\$ 26.68	10.07	\$ 28.02	10.58
	2	\$ 2.05	\$ 21.95	10.69	\$ 23.83	11.60
	3	\$ 2.08	\$ 31.20	15.00	\$ 29.90	14.37
	4	\$ 1.90	\$ 24.45	12.89	\$ 27.58	14.54
	5	\$ 1.96	\$ 32.48	16.59	\$ 32.08	16.39
	6	\$ 2.10	\$ 75.44	36.00	\$ 88.69	42.32
	7	\$ 2.36	\$ 48.58	20.62	\$ 64.45	27.35
	8	\$ 2.40	\$ 224.18	93.49	\$ 306.22	127.70
	9	\$ 2.41	\$ 111.36	46.30	\$ 86.20	35.84
	10	\$ 2.39	\$ 31.84	13.32	\$ 37.83	15.83
	11	\$ 2.29	\$ 31.71	13.88	\$ 33.62	14.71
	12	\$ 2.07	\$ 23.87	11.51	\$ 23.30	11.23
2024	1	\$ 3.02	\$ 40.43	13.37	\$ 57.00	18.85
	2	\$ 1.41	\$ 15.83	11.26	\$ 15.96	11.36
	3	\$ 1.30	\$ 24.81	19.13	\$ 25.20	19.43
	4	\$ 1.15	\$ 27.51	23.94	\$ 26.34	22.92
	5	\$ -	\$ -	-	\$ -	-
	6	\$ -	\$ -	-	\$ -	-
	7	\$ -	\$ -	-	\$ -	-
	8	\$ -	\$ -	-	\$ -	-
	9	\$ -	\$ -	-	\$ -	-
	10	\$ -	\$ -	-	\$ -	-
	11	\$ -	\$ -	-	\$ -	-
	12	\$ -	\$ -	-	\$ -	-

Daily ORDC Adders Average Values and Interval Duration								
YEAR	MONTH	DAY	PRICE_RS	PRICE_RDP	RS_CNT	RDP_CNT	RS_POS	RDP_POS
2024	4	1	\$ -	\$ -	0	0	80	90
2024	4	2	\$ 0.01	\$ -	2	0	80	90
2024	4	3	\$ 3.02	\$ 6.39	11	12	80	90
2024	4	4	\$ 6.22	\$ 6.47	6	16	80	90
2024	4	5	\$ -	\$ -	0	0	80	90
2024	4	6	\$ -	\$ -	0	0	80	90
2024	4	7	\$ 5.30	\$ 17.86	7	16	80	90
2024	4	8	\$ 11.03	\$ 4.08	9	77	80	90
2024	4	9	\$ 0.01	\$ 1.34	2	76	80	90
2024	4	10	\$ -	\$ 0.65	0	69	80	90
2024	4	11	\$ 13.58	\$ 2.65	8	64	80	90
2024	4	12	\$ -	\$ 0.64	0	87	80	90
2024	4	13	\$ -	\$ 1.04	0	13	80	90
2024	4	14	\$ -	\$ -	0	0	80	90
2024	4	15	\$ -	\$ -	0	0	80	90
2024	4	16	\$ 31.21	\$ 6.68	15	69	80	90
2024	4	17	\$ -	\$ 0.85	0	80	80	90
2024	4	18	\$ -	\$ -	0	0	80	90
2024	4	19	\$ -	\$ -	0	0	80	90
2024	4	20	\$ -	\$ -	0	0	80	90
2024	4	21	\$ 1.71	\$ -	8	0	80	90
2024	4	22	\$ -	\$ -	0	0	80	90
2024	4	23	\$ -	\$ -	0	0	80	90
2024	4	24	\$ 4.47	\$ -	17	0	80	90
2024	4	25	\$ -	\$ -	0	0	80	90
2024	4	26	\$ 2.23	\$ 3.58	3	11	80	90
2024	4	27	\$ -	\$ -	0	0	80	90
2024	4	28	\$ 71.28	\$ 16.66	17	5	80	90
2024	4	29	\$ -	\$ -	0	0	80	90
2024	4	30	\$ -	\$ -	0	0	80	90
0	0	0	\$ -	\$ -	0	0	0	0

Monthly Average of Ancillary Services Required MW

year	month	ASMW_REGDN	ASMW_NSPIN	ASMW_RRS	ASMW_REGUP	ASMW_ECRS
2023	1	342	4,048	2,965	372	-
	2	420	4,243	3,022	400	-
	3	433	4,049	3,256	454	-
	4	405	4,262	3,102	400	-
	5	418	5,052	2,901	428	-
	6	376	3,275	2,676	408	2,073
	7	347	2,801	2,583	379	2,041
	8	323	2,207	2,566	389	2,127
	9	362	2,265	2,693	381	2,041
	10	399	2,467	2,950	409	1,784
	11	335	2,385	3,076	344	1,607
	12	339	3,092	3,053	366	1,847
2024	1	342	2,945	2,951	385	1,554
	2	403	2,968	2,951	409	1,668
	3	430	2,530	3,088	432	1,562
	4	399	2,672	3,003	408	1,464
	5	-	-	-	-	-
	6	-	-	-	-	-
	7	-	-	-	-	-
	8	-	-	-	-	-
	9	-	-	-	-	-
	10	-	-	-	-	-
	11	-	-	-	-	-
	12	-	-	-	-	-

Hourly Average of Ancillary Services Required MW

year	DELIVERY_HOUR	ASMW_REGDN	ASMW_NSPIN	ASMW_RRS	ASMW_REGUP	ASMW_ECRS
2023	1	372	2,816	2,954	227	1,447
	2	294	2,816	2,954	189	1,393
	3	248	3,101	2,987	214	1,462
	4	223	3,103	2,988	242	1,460
	5	219	3,103	2,988	297	1,431
	6	261	3,103	2,988	426	1,440
	7	233	3,558	2,883	521	1,598
	8	362	3,558	2,883	347	1,815
	9	592	3,558	2,883	340	2,104
	10	495	3,558	2,883	486	2,474
	11	421	3,668	2,778	530	2,305
	12	393	3,668	2,778	535	2,325
	13	385	3,687	2,778	522	2,267
	14	375	3,687	2,778	510	2,283
	15	404	3,620	2,908	499	2,331
	16	419	3,620	2,908	523	2,413
	17	424	3,620	2,908	606	2,359
	18	405	3,620	2,908	652	2,359
	19	397	3,147	2,905	546	2,172
	20	338	3,147	2,905	409	2,042
	21	376	3,147	2,905	275	1,864
	22	439	3,147	2,905	201	1,756
	23	472	3,068	2,954	192	1,612
	24	443	3,068	2,954	168	1,501
2024	1	338	2,101	3,066	242	1,044
	2	284	2,101	3,066	248	1,007
	3	243	2,640	3,076	231	1,100
	4	243	2,633	3,076	274	1,052
	5	235	2,633	3,076	340	1,120
	6	276	2,633	3,076	489	1,229
	7	237	3,131	3,012	601	1,424
	8	520	3,131	3,012	377	1,602
	9	783	3,131	3,012	320	2,166
	10	566	3,131	3,012	435	2,356
	11	476	3,027	2,992	428	2,179
	12	446	3,027	2,992	414	1,899
	13	454	3,055	2,992	430	1,716
	14	439	3,055	2,992	493	1,648
	15	438	3,226	2,928	455	1,821
	16	452	3,226	2,928	527	1,806
	17	433	3,226	2,928	643	1,935
	18	395	3,226	2,928	776	1,952
	19	350	2,394	2,918	658	1,728
	20	310	2,394	2,918	495	1,543
	21	339	2,394	2,918	282	1,412
	22	363	2,394	2,918	242	1,340
	23	419	2,362	3,066	215	1,224
	24	403	2,362	3,066	190	1,148

Monthly Average Ancillary Services Price

year	month	MCPC_REGDN	MCPC_NSPIN	MCPC_RRS	MCPC_REGUP	MCPC_ECRS
2023	1	\$ 5.69	\$ 4.69	\$ 4.00	\$ 7.27	\$ -
	2	\$ 12.99	\$ 5.79	\$ 3.72	\$ 7.58	\$ -
	3	\$ 6.42	\$ 8.01	\$ 6.24	\$ 12.47	\$ -
	4	\$ 7.65	\$ 8.03	\$ 6.12	\$ 12.52	\$ -
	5	\$ 4.74	\$ 11.87	\$ 4.03	\$ 7.66	\$ -
	6	\$ 8.20	\$ 45.87	\$ 38.57	\$ 47.00	\$ 107.44
	7	\$ 6.53	\$ 17.12	\$ 18.14	\$ 23.85	\$ 38.30
	8	\$ 99.16	\$ 80.61	\$ 132.73	\$ 215.17	\$ 276.73
	9	\$ 29.48	\$ 17.56	\$ 32.12	\$ 47.44	\$ 44.76
	10	\$ 6.59	\$ 8.23	\$ 10.82	\$ 17.38	\$ 16.78
	11	\$ 3.19	\$ 8.98	\$ 7.73	\$ 12.42	\$ 11.06
	12	\$ 2.60	\$ 2.81	\$ 2.50	\$ 3.91	\$ 3.28
2024	1	\$ 15.69	\$ 14.74	\$ 17.72	\$ 18.47	\$ 22.98
	2	\$ 2.15	\$ 1.58	\$ 1.74	\$ 2.65	\$ 2.64
	3	\$ 2.90	\$ 5.29	\$ 3.95	\$ 5.52	\$ 6.54
	4	\$ 3.01	\$ 7.30	\$ 6.37	\$ 10.41	\$ 10.16
	5	\$ -	\$ -	\$ -	\$ -	\$ -
	6	\$ -	\$ -	\$ -	\$ -	\$ -
	7	\$ -	\$ -	\$ -	\$ -	\$ -
	8	\$ -	\$ -	\$ -	\$ -	\$ -
	9	\$ -	\$ -	\$ -	\$ -	\$ -
	10	\$ -	\$ -	\$ -	\$ -	\$ -
	11	\$ -	\$ -	\$ -	\$ -	\$ -
	12	\$ -	\$ -	\$ -	\$ -	\$ -

Monthly Average A/S Cost per MWh Load

year	month	AScost_REGDN	AScost_NSPIN	AScost_RRS	AScost_REGUP	AScost_ECRS
2023	1	\$ 0.04	\$ 0.44	\$ 0.27	\$ 0.06	\$ -
	2	\$ 0.12	\$ 0.55	\$ 0.25	\$ 0.07	\$ -
	3	\$ 0.06	\$ 0.76	\$ 0.48	\$ 0.13	\$ -
	4	\$ 0.07	\$ 0.80	\$ 0.45	\$ 0.12	\$ -
	5	\$ 0.04	\$ 1.22	\$ 0.24	\$ 0.07	\$ -
	6	\$ 0.05	\$ 2.53	\$ 1.74	\$ 0.32	\$ 2.63
	7	\$ 0.04	\$ 0.75	\$ 0.73	\$ 0.14	\$ 1.23
	8	\$ 0.47	\$ 2.63	\$ 5.04	\$ 1.24	\$ 8.72
	9	\$ 0.18	\$ 0.67	\$ 1.45	\$ 0.30	\$ 1.53
	10	\$ 0.06	\$ 0.43	\$ 0.67	\$ 0.15	\$ 0.63
	11	\$ 0.02	\$ 0.49	\$ 0.55	\$ 0.10	\$ 0.41
	12	\$ 0.02	\$ 0.19	\$ 0.17	\$ 0.03	\$ 0.14
2024	1	\$ 0.10	\$ 0.85	\$ 1.02	\$ 0.14	\$ 0.70
	2	\$ 0.02	\$ 0.11	\$ 0.12	\$ 0.02	\$ 0.10
	3	\$ 0.03	\$ 0.31	\$ 0.28	\$ 0.06	\$ 0.24
	4	\$ 0.03	\$ 0.42	\$ 0.41	\$ 0.09	\$ 0.32
	5	\$ -	\$ -	\$ -	\$ -	\$ -
	6	\$ -	\$ -	\$ -	\$ -	\$ -
	7	\$ -	\$ -	\$ -	\$ -	\$ -
	8	\$ -	\$ -	\$ -	\$ -	\$ -
	9	\$ -	\$ -	\$ -	\$ -	\$ -
	10	\$ -	\$ -	\$ -	\$ -	\$ -
	11	\$ -	\$ -	\$ -	\$ -	\$ -
	12	\$ -	\$ -	\$ -	\$ -	\$ -

ERCOT-wide Cumulative PNM			
year	month	pnm	pnm_accum
2023	0	\$ -	\$ -
	1	\$ 3,758.67	\$ 3,758.67
	2	\$ 3,066.65	\$ 6,825.32
	3	\$ 7,327.65	\$ 14,152.97
	4	\$ 3,963.19	\$ 18,116.16
	5	\$ 8,532.76	\$ 26,648.92
	6	\$ 30,746.31	\$ 57,395.23
	7	\$ 15,736.44	\$ 73,131.67
	8	\$ 125,626.42	\$ 198,758.09
	9	\$ 46,968.45	\$ 245,726.54
	10	\$ 6,305.54	\$ 252,032.08
	11	\$ 7,639.84	\$ 259,671.92
	12	\$ 4,296.20	\$ 263,968.12
2024	0	\$ -	\$ -
	1	\$ 8,527.11	\$ 8,527.11
	2	\$ 3,701.32	\$ 12,228.43
	3	\$ 8,447.84	\$ 20,676.27
	4	\$ 11,209.11	\$ 31,885.38
	5	\$ -	\$ -
	6	\$ -	\$ -
	7	\$ -	\$ -
	8	\$ -	\$ -
	9	\$ -	\$ -
	10	\$ -	\$ -
	11	\$ -	\$ -
	12	\$ -	\$ -

DA vs. RT Load Forecast Error by Hour Ending							
year	month	HE_1_4	HE_13_16	HE_17_20	HE_21_24	HE_5_8	HE_9_12
2023	1	33	392	136	210	732	1,397
	2	(28)	1,497	1,206	666	1,005	1,480
	3	(484)	459	208	100	750	931
	4	(1,127)	362	252	(282)	(373)	534
	5	(909)	1,207	1,088	(363)	(998)	467
	6	(68)	2,778	1,430	426	(586)	1,530
	7	22	3,009	1,488	469	(224)	1,085
	8	45	1,604	872	994	(355)	802
	9	(320)	1,185	417	(82)	(589)	338
	10	(322)	1,539	1,228	67	(527)	752
	11	(207)	268	863	73	186	101
	12	(632)	(429)	258	(48)	(806)	(949)
2024	1	(764)	486	956	9	163	690
	2	(237)	694	483	339	735	1,077
	3	(112)	481	306	187	549	675
	4	(461)	969	256	(84)	(206)	522
	5	-	-	-	-	-	-
	6	-	-	-	-	-	-
	7	-	-	-	-	-	-
	8	-	-	-	-	-	-
	9	-	-	-	-	-	-
	10	-	-	-	-	-	-
	11	-	-	-	-	-	-
	12	-	-	-	-	-	-

Monthly Average of Wind Generation by Hour Ending							
year	month	HE_1_4	HE_13_16	HE_17_20	HE_21_24	HE_5_8	HE_9_12
2023	1	16,786	12,978	13,256	16,258	15,896	13,255
	2	15,935	14,322	15,239	17,307	15,026	13,552
	3	16,983	12,878	13,946	16,760	15,530	13,978
	4	16,756	12,031	13,207	16,187	15,018	12,761
	5	12,744	7,265	10,625	13,140	9,807	7,209
	6	14,285	8,535	10,879	13,859	11,975	9,609
	7	16,218	8,723	10,953	14,729	13,006	9,683
	8	14,147	7,705	9,874	12,837	11,131	8,875
	9	13,994	6,223	7,888	13,447	11,182	8,244
	10	14,077	10,071	10,516	13,441	12,740	10,486
	11	12,510	9,029	9,928	13,033	11,412	9,478
	12	13,984	11,534	11,641	14,558	12,979	11,017
2024	1	12,969	10,617	10,118	12,254	12,574	10,880
	2	17,760	14,160	14,221	17,060	17,575	14,116
	3	15,982	11,747	13,155	16,239	14,130	11,839
	4	18,123	14,290	15,320	17,181	17,432	15,079
	5	-	-	-	-	-	-
	6	-	-	-	-	-	-
	7	-	-	-	-	-	-
	8	-	-	-	-	-	-
	9	-	-	-	-	-	-
	10	-	-	-	-	-	-
	11	-	-	-	-	-	-
	12	-	-	-	-	-	-

RT Congestion Constraint Rankings - Top 10 Constraints by Binding Frequency and Top 10 Constraints by Total Congestion Rent																
CATEGORY	YEAR	CONSTRAINT	RANKVAR	RANK	JAN	FEB	MAR	APR	MAY	JUN	JUL	AUG	SEP	OCT	NOV	DEC
FREQ_EXIST	2024	NORTH EDINBURG LOBO GTC (NE_LOB)	6143	1	571	1245	977	3350	0	0	0	0	0	0	0	0
FREQ_EXIST	2024	PANHANDLE GTC (PNHNDL)	5484	2	647	2029	1204	1604	0	0	0	0	0	0	0	0
FREQ_EXIST	2024	WEST TEXAS EXPORT GTC (WESTEX)	5076	3	958	1163	1377	1578	0	0	0	0	0	0	0	0
FREQ_EXIST	2024	LARDVN_LASCRU1_1 (LARDVNTH-LASCROUTE)	4829	4	595	0	1988	2246	0	0	0	0	0	0	0	0
FREQ_EXIST	2024	VALLEY EXPORT GTC (VALEXP)	4262	5	1410	1707	1060	85	0	0	0	0	0	0	0	0
FREQ_EXIST	2024	ZAPATA-STARR GTC (ZAPSTR)	4190	6	261	1539	864	1526	0	0	0	0	0	0	0	0
FREQ_EXIST	2024	BURNS_RIOHONDO_1 (RIOHONDO-MV_BURNS)	4064	7	469	664	982	1949	0	0	0	0	0	0	0	0
FREQ_EXIST	2024	6036_A (TKWSW-MGSES)	3992	8	345	772	2207	668	0	0	0	0	0	0	0	0
FREQ_EXIST	2024	N_SHARPE_XF1 (N_SHARPE-N_SHARPE)	3547	9	159	1455	196	1737	0	0	0	0	0	0	0	0
FREQ_EXIST	2024	HECKER_WHITE_2_1 (WHITE_PTHECKER)	3235	10	0	6	1366	1863	0	0	0	0	0	0	0	0
TOP10_RENT	2024	6036_A (TKWSW-MGSES)	\$ 101.90	1	\$ 4.60	\$ 13.29	\$ 68.38	\$ 15.63	\$ -	\$ -	\$ -	\$ -	\$ -	\$ -	\$ -	\$ -
TOP10_RENT	2024	HARGRO_TWINBU1_1 (TWINBU-HARGROVE)	\$ 51.29	2	\$ 20.59	\$ 9.39	\$ 20.80	\$ 0.51	\$ -	\$ -	\$ -	\$ -	\$ -	\$ -	\$ -	\$ -
TOP10_RENT	2024	WEST TEXAS EXPORT GTC (WESTEX)	\$ 49.89	3	\$ 13.53	\$ 8.32	\$ 12.19	\$ 15.85	\$ -	\$ -	\$ -	\$ -	\$ -	\$ -	\$ -	\$ -
TOP10_RENT	2024	LPLNW_LPLMD_1 (LPLNW-LPLMD)	\$ 23.75	4	\$ 0.68	\$ -	\$ 16.88	\$ 6.19	\$ -	\$ -	\$ -	\$ -	\$ -	\$ -	\$ -	\$ -
TOP10_RENT	2024	LARDVN_LASCRU1_1 (LARDVNTH-LASCROUTE)	\$ 22.03	5	\$ 4.67	\$ -	\$ 8.45	\$ 8.91	\$ -	\$ -	\$ -	\$ -	\$ -	\$ -	\$ -	\$ -
TOP10_RENT	2024	PANHANDLE GTC (PNHNDL)	\$ 19.60	6	\$ 1.92	\$ 7.68	\$ 3.48	\$ 6.52	\$ -	\$ -	\$ -	\$ -	\$ -	\$ -	\$ -	\$ -
TOP10_RENT	2024	BURNS_RIOHONDO_1 (RIOHONDO-MV_BURNS)	\$ 19.40	7	\$ 2.14	\$ 1.46	\$ 3.38	\$ 12.42	\$ -	\$ -	\$ -	\$ -	\$ -	\$ -	\$ -	\$ -
TOP10_RENT	2024	NORTH EDINBURG LOBO GTC (NE_LOB)	\$ 14.00	8	\$ 1.33	\$ 2.85	\$ 2.42	\$ 7.41	\$ -	\$ -	\$ -	\$ -	\$ -	\$ -	\$ -	\$ -
TOP10_RENT	2024	CATARI_PILONC1_1 (PILONCIL-CATARINA)	\$ 13.46	9	\$ 8.51	\$ 0.98	\$ 2.36	\$ 1.59	\$ -	\$ -	\$ -	\$ -	\$ -	\$ -	\$ -	\$ -
TOP10_RENT	2024	6046_A (MGSES-FLCNS)	\$ 12.43	10	\$ 3.15	\$ 2.96	\$ 3.90	\$ 2.42	\$ -	\$ -	\$ -	\$ -	\$ -	\$ -	\$ -	\$ -

MONTH	RENT_TOTAL
1	201.27
2	90.69
3	212.49
4	143.93
5	0.00
6	0.00
7	0.00
8	0.00
9	0.00
10	0.00
11	0.00
12	0.00
Sum-Total	648.38

